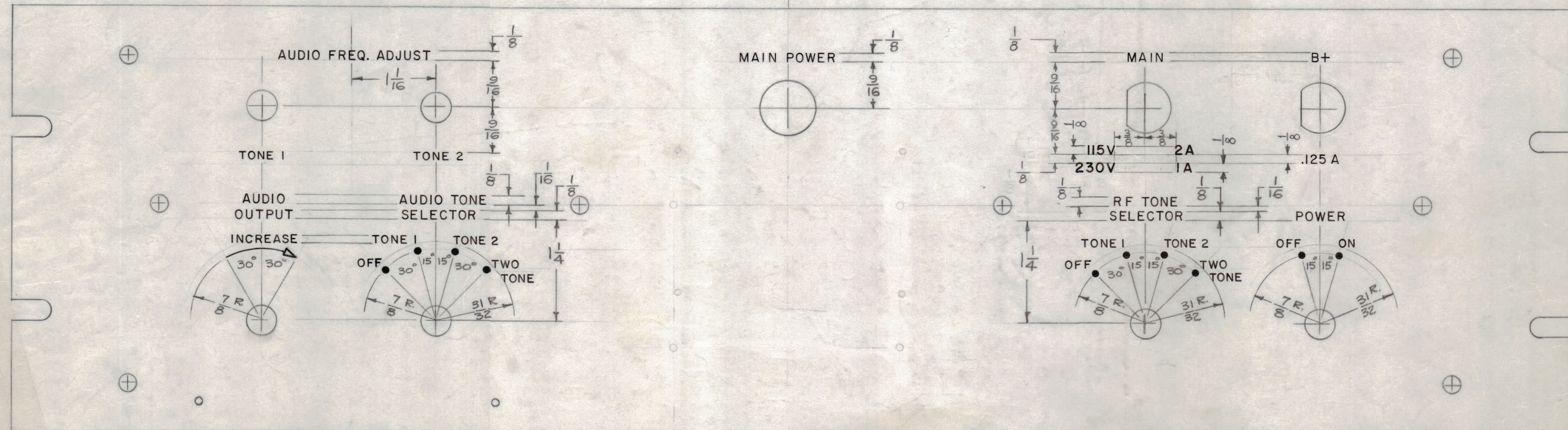


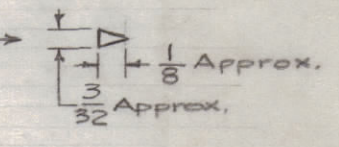
IF IT IS FOUND DESIRABLE TO CHANGE ANY TOLERANCE OR OTHER DETAIL SPECIFIED ON THIS DRAWING NOTIFY THE PURCHASER PROMPTLY.

MAXIMUM ALLOWABLE TOLERANCES HAVE BEEN DETERMINED AND DEVIATIONS WILL BE CAUSE FOR REJECTION. REMOVE ALL BURRS AND SHARP EDGES.



LD-501

NOTES:
 1. All Lettering to be Gothic, White Filled.
 2. All Lettering to be 3/32" high unless otherwise indicated.
 3. All Dots to be 1/16" Diam., White Filled.
 4. Arrowhead to be as shown in detail.
 (White Filled Lines)



LETTER HEIGHT	DEPTH OF STROKE	WIDTH OF STROKE
3/32	.010	.015
1/8	.010	.020
DOTS	.010	—
ARROW	.010	.015

NOTICE TO PERSONS RECEIVING THIS DRAWING

THE TECHNICAL MATERIEL CORPORATION claims proprietary right in the material disclosed hereon. This drawing is issued in confidence for engineering information only and may not be reproduced or used to manufacture anything shown hereon without permission from THE TECHNICAL MATERIEL CORPORATION to the user. This drawing is loaned for mutual assistance and is subject to recall at any time.

Property of:
 THE TECHNICAL MATERIEL CORPORATION
 MAMARONECK, NEW YORK

ISSUE	ITEM	CHANGED FROM	DATE	CH. NO.	DRAFTS	CHECKER	ENG. APP.
C		RELOC NAMEPLATE HOLES	7-14-78	21664	UJB		*
B	1	on Main ENGRAVING, "2A" relocated & "115V", "230V", "1A" Added	7-14-61	5249	G.D.L.	M.S.P.	
A	1	.125 A WAS .25 A (Error)	2/18/59	805	16	H.L.	

TOLERANCES		SCALE:
ALL OTHERS	DEC. DIM. ± FRAC. DIM. ± 1/64 ANGULAR DIM. ± 1°	DRILL, PUNCH, COMMERCIAL STOCK SIZES AND MANUFACTURERS TOLERANCES ARE NOT INCLUDED.

Ref: BMS-1523

REQ. ITEM	PART NO.	DESCRIPTION	SYMBOL
		THE TECHNICAL MATERIEL CORP. MAMARONECK, NEW YORK	
STOCK SIZE		ENGRAVING, FRONT PANEL,	
MATERIAL	WEIGHT PER PC.	TWO-TONE GENERATOR	
TYPE & TEMPER	DRAWN	ELEC. DES. APP.	MECH. DES. APP.
HEAT TREAT. SPEC.	CHECKED	FINAL APPROVAL	
FINISH & SPEC. NO.		LD-501	C

REQ. PER UNIT	MODEL	PROJECT NO.	ASSY. NO.	DATE
1	TTG			2-9-59

USED ON