

LD-485

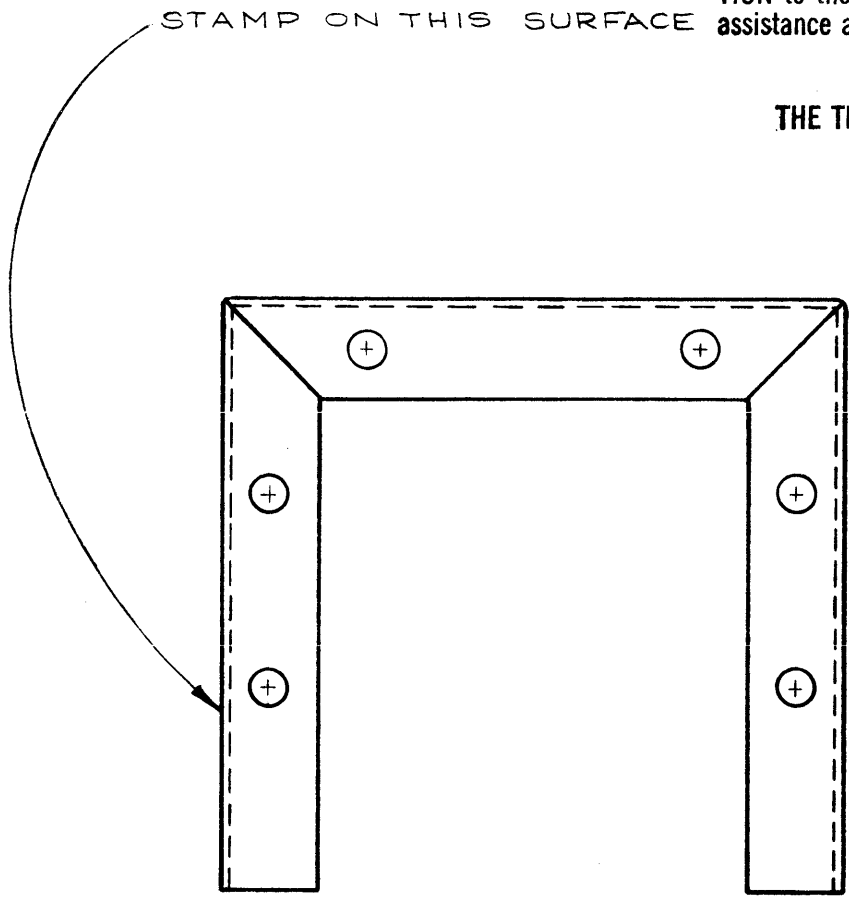
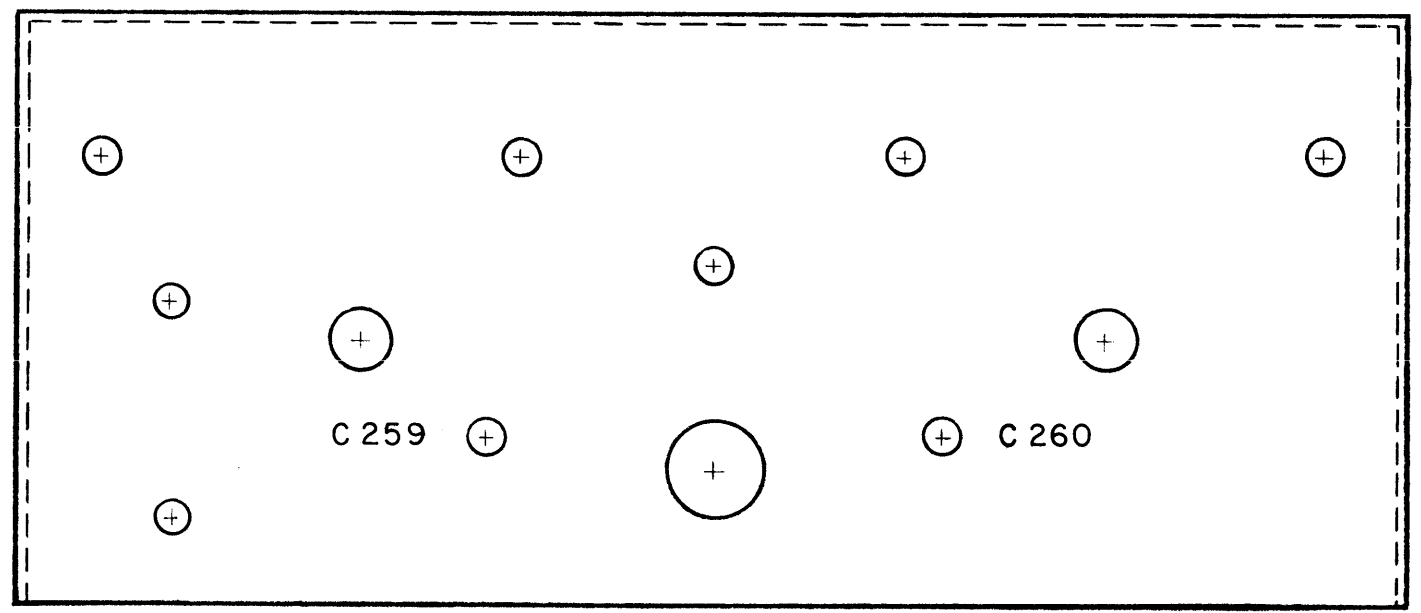
NOTICE TO PERSONS RECEIVING THIS DRAWING

THE TECHNICAL MATERIEL CORPORATION claims proprietary right in the material disclosed hereon. This drawing is issued in confidence for engineering information only and may not be reproduced or used to manufacture anything shown hereon without permission from THE TECHNICAL MATERIEL CORPORATION to the user. This drawing is loaned for mutual assistance and is subject to recall at any time.

Property of:

THE TECHNICAL MATERIEL CORPORATION
MAMARONECK, NEW YORK

STAMP ON THIS SURFACE



ALL LETTERING 1/8 HIGH BLACK GOTHIC.

MARKING PROCESS: AS PER TMC SPECIFICATION S-727

ISSUE	ITEM	CHAN ED FROM	DATE	CH. NO.	DRAFTS	CHECKER	ENG. APP.

DEC. DIM. ±	MAXIMUM ALLOWABLE TOLERANCES HAVE BEEN DETERMINED AND ANY DEVIATIONS WILL BE CAUSE FOR REJECTION: REM VE ALL BURRS AND SHARP EDGES
FRAC. DIM. ±	
ANGULAR DIM. ±	

	G.P.T. 10,000	I.P.A.		1-5-59
REQ. PER UNIT	MODEL	PROJECT NO.	ASSY. NO.	DATE
	USED ON			

REF: MS-1447

REQ. ITEM	PART NO.	DESCRIPTION		SYMBOL
		THE TECHNICAL MATERIEL CORP. MAMARONECK, NEW YORK		
STOCK SIZE		LETTERING, VAC. CAPACITOR		
MATERIAL		MTG. CHASSIS		
	J.C. BIELE	<i>Handwritten initials</i>	<i>Handwritten initials</i>	
TYPE & TEMPER	HEATTREAT. PEC.	DRAWN	CHECKED	FINAL APPROVAL
		<i>Handwritten initials</i>	<i>Handwritten initials</i>	LD-485
FINISH & SPEC. NO.	ELEC. DE . APP MECH/OES. APP			