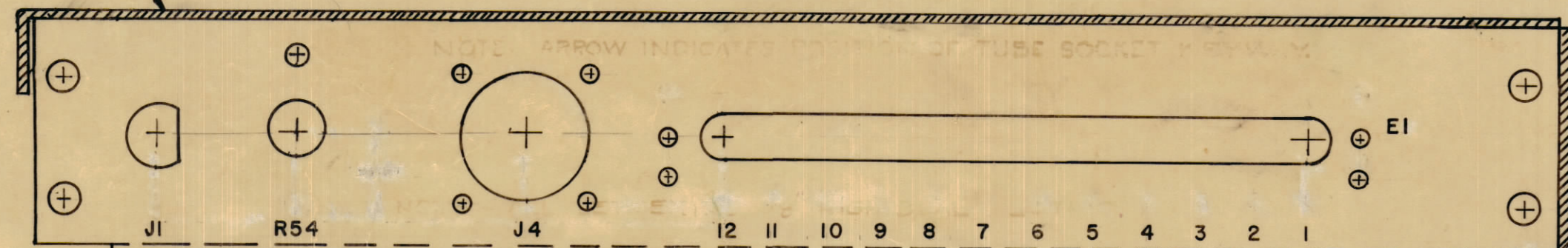
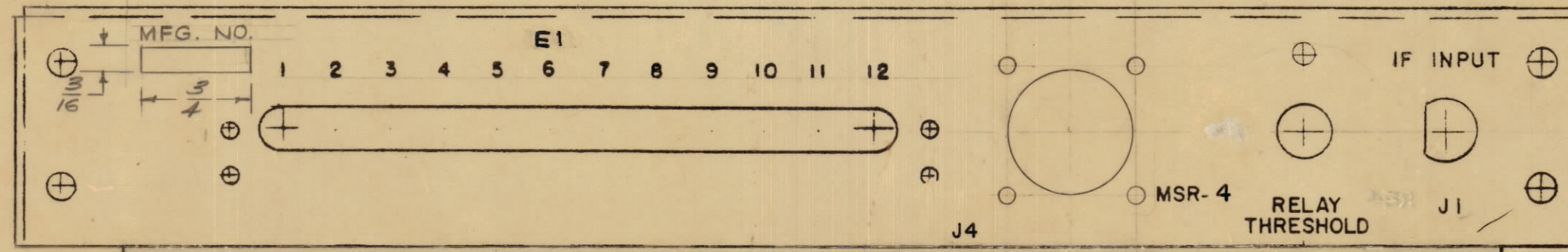
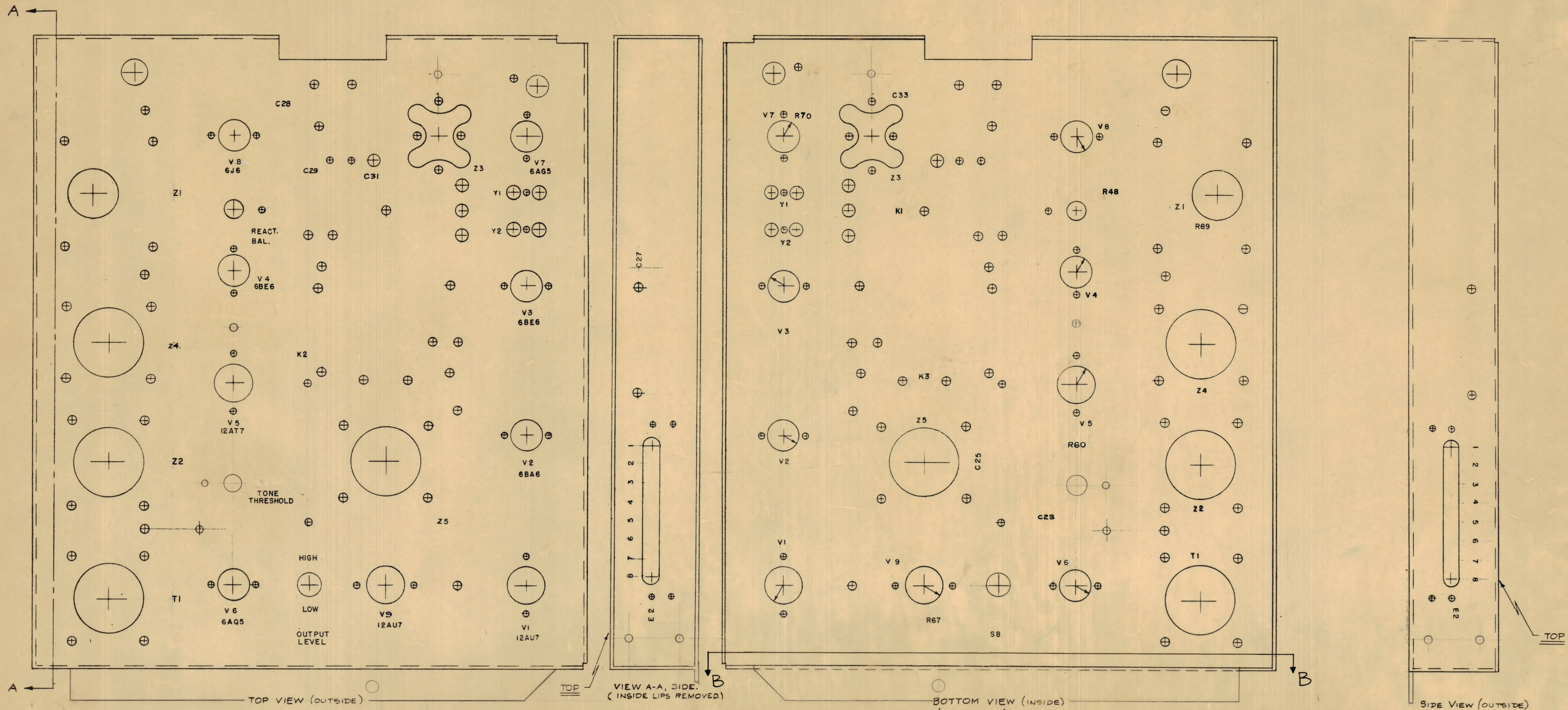


IF IT IS FOUND DESIRABLE TO CHANGE ANY TOLERANCE OR OTHER DETAIL SPECIFIED ON THIS DRAWING NOTIFY THE PURCHASER PROMPTLY.  
 MAXIMUM ALLOWABLE TOLERANCES HAVE BEEN DETERMINED AND DEVIATIONS WILL BE CAUSE FOR REJECTION. REMOVE ALL BURRS AND SHARP EDGES



ISSUE	ITEM	CHANGED FROM	DATE	BY	NO. DRAFTS	CHECKER	ENG. APP.
F	1	R70 ADDED	3-24-55	3738	OK		
E	1	REAR VIEW 2122 & T1 ADDED	10-24-55	17466	OK		
D	1	K1, R48 RELOCATED	12-12-54	6020	L.A.		
D	2	S5, X3, S4 DELETED					
D	3	REAR VIEW INSIDE ADDED					
C	1	REAR VIEW INSIDE ADDED	9/10/58	449	16		
B	2	C23 WAS L31	9/10/58	449	16		
B	1	C31 WAS L3					
A	5	REF. WAS MS-1217					
A	4	X1 ADDED TO REAR					
A	3	REAR VIEW (INSIDE) ADDED FROM REAR VIEW (INSIDE) & REAR VIEW (INSIDE) ADDED FROM REAR VIEW (INSIDE) & REAR VIEW (INSIDE) ADDED FROM REAR VIEW (INSIDE)	9/10/58	439	16		
A	2	ALL V SYMBOLS FROM V1 TO V9 MOVED BACK TO MAIN CHASSIS					
A	1	V1-V9 OBSOLETE					

NOTICE TO PERSONS RECEIVING THIS DRAWING  
 THE TECHNICAL MATERIEL CORPORATION claims proprietary right in the material disclosed herein. This drawing is issued in confidence for engineering information only and may not be reproduced or used to manufacture any thing of its own hereon without permission from THE TECHNICAL MATERIEL CORPORATION to the user. This drawing is loaned for mutual assistance and is subject to recall at any time.  
 Property of:  
 THE TECHNICAL MATERIEL CORPORATION  
 MAMARONECK, NEW YORK

- NOTES:  
 1. ALL LETTERING TO BE 1/8" HIGH BLACK GOTHIC.  
 2. ARROW INDICATES POSITION OF TUBE SOCKET KEYWAY.

Ref: BMS-1322

REQ. ITEM	PART NO.	DESCRIPTION	SYMBOL
		THE TECHNICAL MATERIEL CORP. MAMARONECK, NEW YORK	
		STOCK SIZE	
		MATERIAL	
		WEIGHT PER PC	
		TYPE & TEMPER	
		HEAT TREAT. SPEC.	
		FINISH & SPEC. NO.	

LETTERING, MAIN CHASSIS  
 MSR-4

DATE: 6-24-58

LD-409 F

LD-409 F