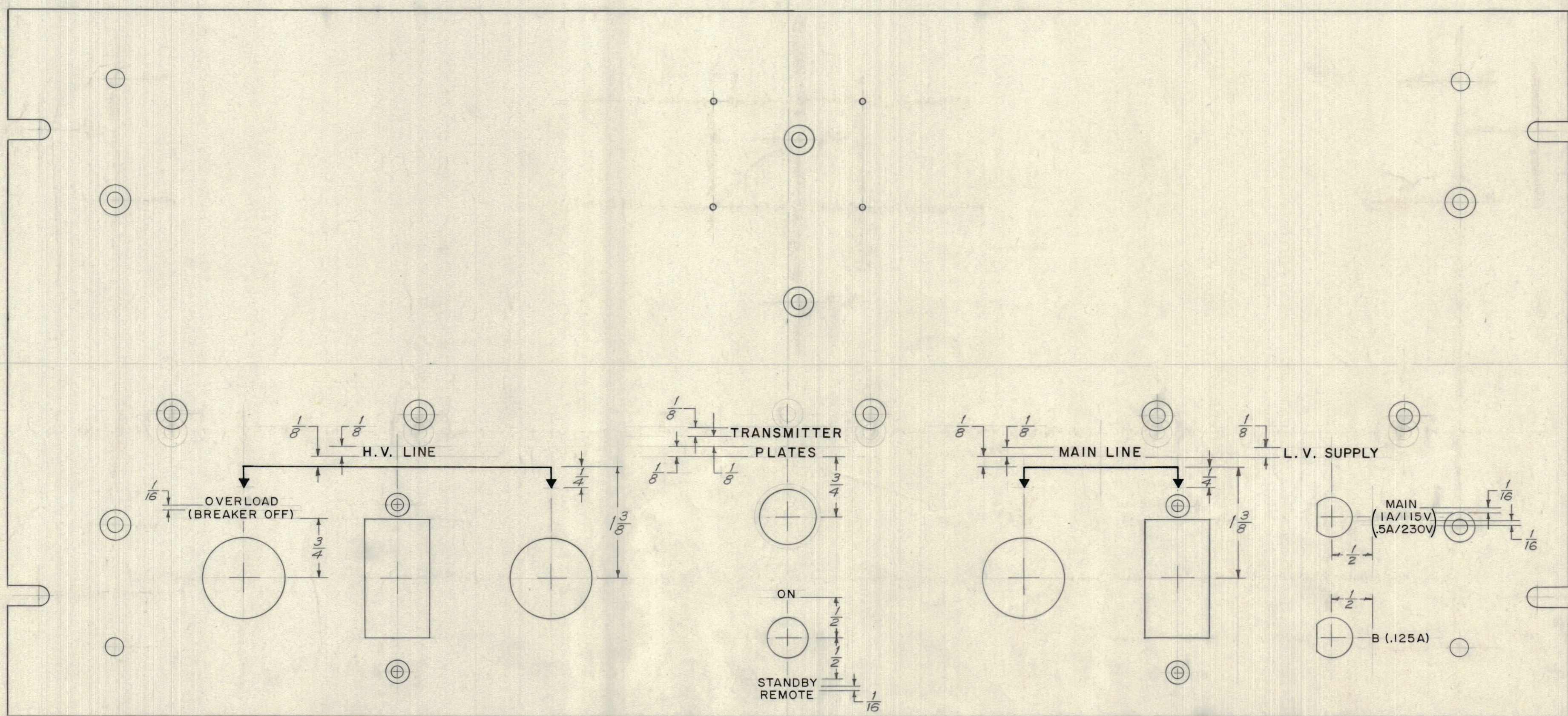


IF IT IS FOUND DESIRABLE TO CHANGE ANY TOLERANCE OR OTHER DETAIL SPECIFIED ON THIS DRAWING NOTIFY THE PURCHASER PROMPTLY.  
 MAXIMUM ALLOWABLE TOLERANCES HAVE BEEN DETERMINED AND DEVIATIONS WILL BE CAUSE FOR REJECTION. REMOVE ALL BURRS AND SHARP EDGES

**NOTICE TO PERSONS RECEIVING THIS DRAWING**  
 THE TECHNICAL MATERIEL CORPORATION claims proprietary right in the material disclosed hereon. This drawing is issued in confidence for engineering information only and may not be reproduced or used to manufacture anything shown hereon without permission from THE TECHNICAL MATERIEL CORPORATION to the user. This drawing is loaned for mutual assistance and is subject to recall at any time.  
 Property of:  
 THE TECHNICAL MATERIEL CORPORATION  
 MAMARONECK, NEW YORK



NOTE - ALL LETTERING TO BE WHITE FILLED GOTHIC.  
 ALL LETTERING TO BE 3/32 HIGH UNLESS OTHERWISE SPECIFIED.

LETTER HEIGHT	STROKE DEPTH	STROKE WIDTH
3/32	.010	.015
1/8	.010	.020

ISSUE	ITEM	CHANGED FROM	DATE	CN. NO.	DRAFTS	CHECKER	ENG. APP.
TOLERANCES							
ALL OTHERS		DEC. DIM. ±		DRILL, PUNCH, COMMERCIAL STOCK			
		FRAC. DIM. ±		SIZES AND MANUFACTURERS			
		ANGULAR DIM. ±		TOLERANCES ARE NOT INCLUDED.			

REQ. PER UNIT	MODEL	PROJECT NO.	ASSY. NO.	DATE
1	PSP-350	PAL-350		4-29-55

Ref- MS-1204

REQ. ITEM	PART NO.	DESCRIPTION	SYMBOL
THE TECHNICAL MATERIEL CORP. MAMARONECK, NEW YORK			
ENGRAVING, FRONT PANEL			
DRAWN		ELEC. DES. APP.	
CHECKED		MECH. DES. APP.	
FINAL APPROVAL			
LD-387			

LD-387