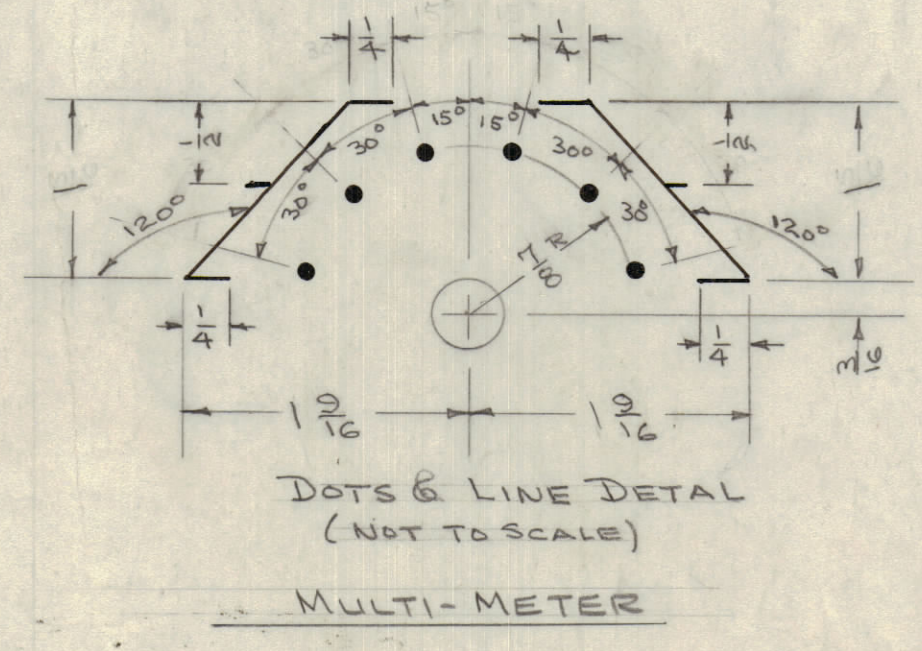
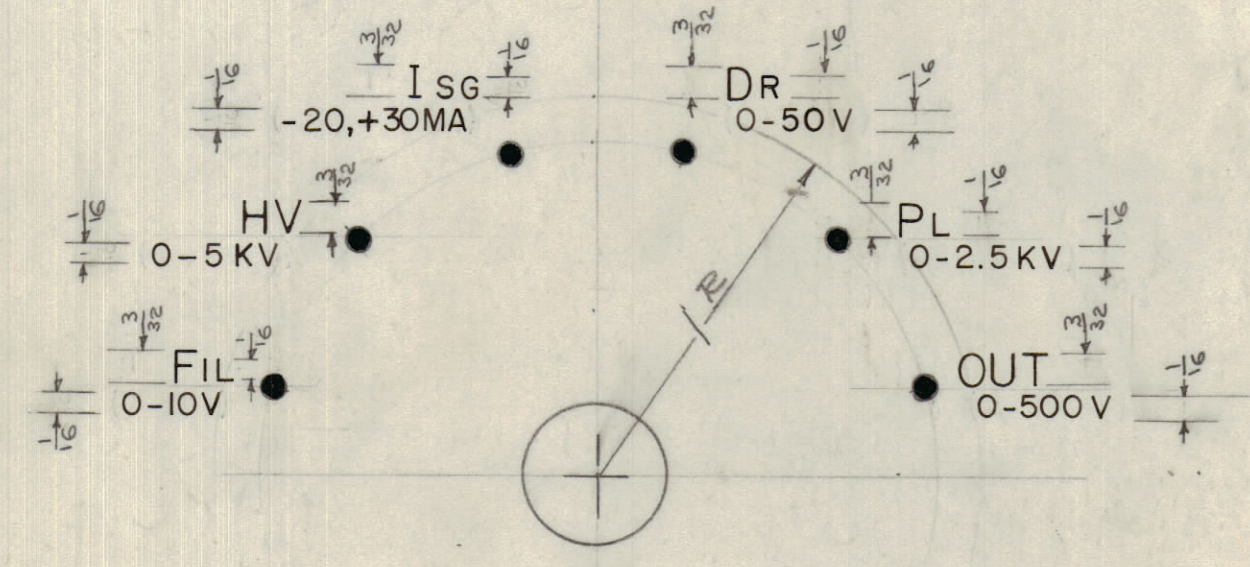
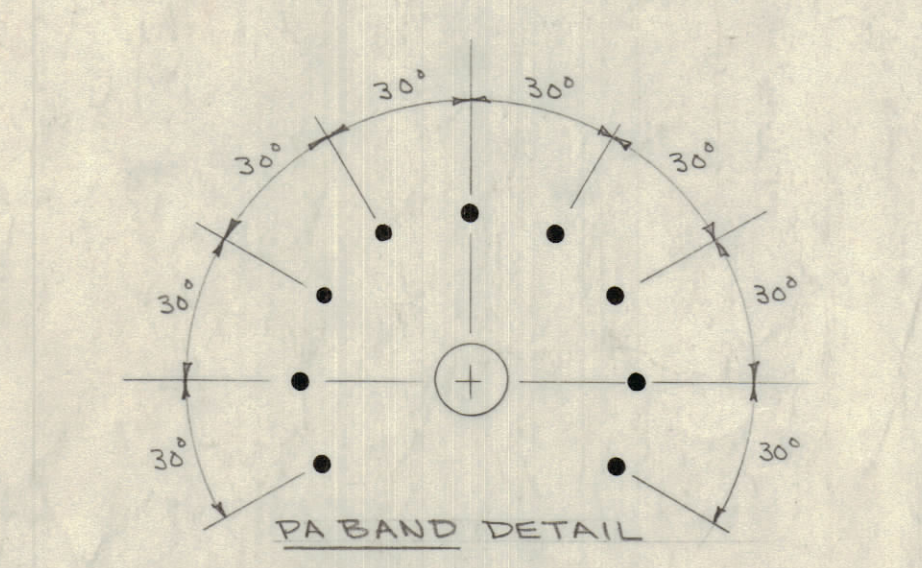
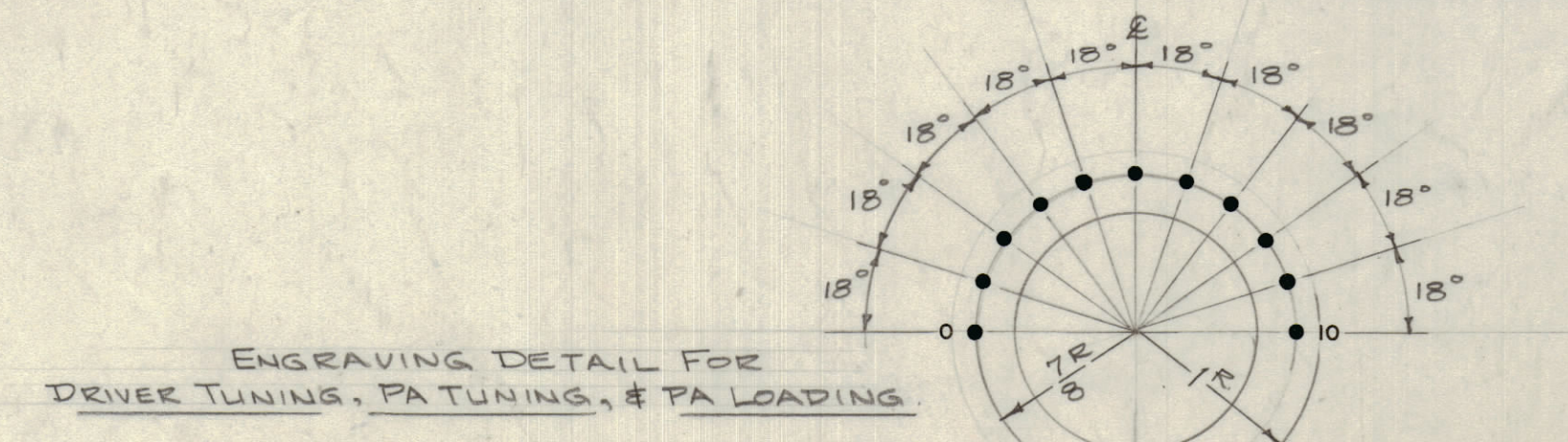
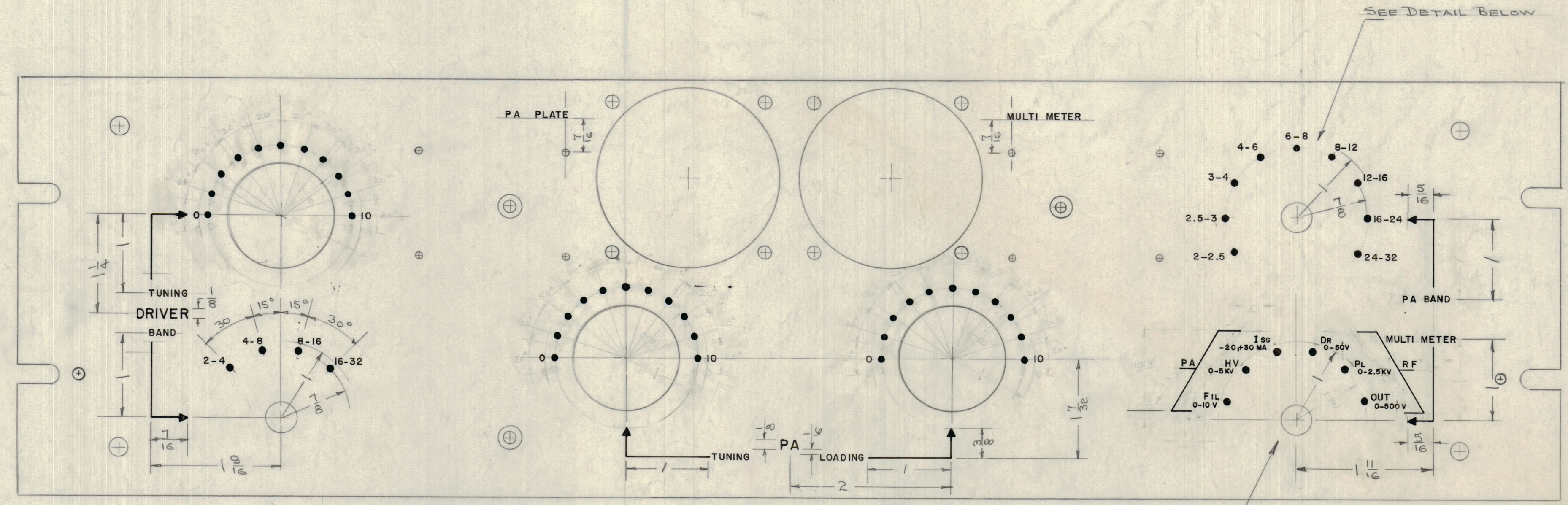


IF IT IS FOUND DESIRABLE TO CHANGE ANY TOLERANCE OR OTHER DETAIL SPECIFIED ON THIS DRAWING NOTIFY THE PURCHASER PROMPTLY.
 MAXIMUM ALLOWABLE TOLERANCES HAVE BEEN DETERMINED AND DEVIATIONS WILL BE CAUSE FOR REJECTION. REMOVE ALL BURRS AND SHARP EDGES

NOTICE TO PERSONS RECEIVING THIS DRAWING

THE TECHNICAL MATERIEL CORPORATION claims proprietary right in the material disclosed hereon. This drawing is issued in confidence for engineering information only and may not be reproduced or used to manufacture anything shown hereon without permission from THE TECHNICAL MATERIEL CORPORATION to the user. This drawing is loaned for mutual assistance and is subject to recall at any time.

Property of:
 THE TECHNICAL MATERIEL CORPORATION
 MAMARONECK, NEW YORK



NOTES:
 ALL LETTERING WHITE FILLED GOTHIC.
 ALL DOTS 1/16 DIA. WHITE FILLED.
 ALL LETTERING 3/32 HIGH UNLESS OTHERWISE SPECIFIED.

LETTER HEIGHT	DEPTH OF STROKE	WIDTH OF STROKE
3/32	.010	.015
1/8	.010	.020
1/16		

2	Parents del. from multi-meter Engraving	7/1/50	404	16	0128	APD	
1	Driver Tuning, PA Tuning & PA Load Engraving checked						
ISSUE	ITEM	CHANGED FROM	DATE	CN. NO.	DRAFTS	CHECKER	ENG. APP.
TOLERANCES		SCALE:					
ALL OTHERS	DEC. DIM. ±	DRILL, PUNCH, COMMERCIAL STOCK SIZES AND MANUFACTURERS TOLERANCES ARE NOT INCLUDED.					
	FRAC. DIM. ±						
	ANGULAR DIM. ±						

REF: M3-1201

REQ. ITEM	PART NO.	DESCRIPTION	SYMBOL
		THE TECHNICAL MATERIEL CORP. MAMARONECK, NEW YORK	
		STOCK SIZE	
		MATERIAL	WEIGHT PER FC.
		TYPE & TEMPER	
		HEAT TREAT. SPEC.	
		FINISH & SPEC. NO.	

ENGRAVING, FRONT PANEL
 RFA-1 P/O PAL-350

DRAWN: 5/16/50
 ELEC. DES. APP. [Signature]
 MECH. DES. APP. [Signature]

CHECKED: [Signature]
 FINAL APPROVAL: [Signature]

LD-386 A

1	RFA-1	P/O PAL-350			
REQ. PER UNIT	MODEL	PROJECT NO.	ASS'Y. NO.	DATE	USED ON

LD-386 A