

5

4

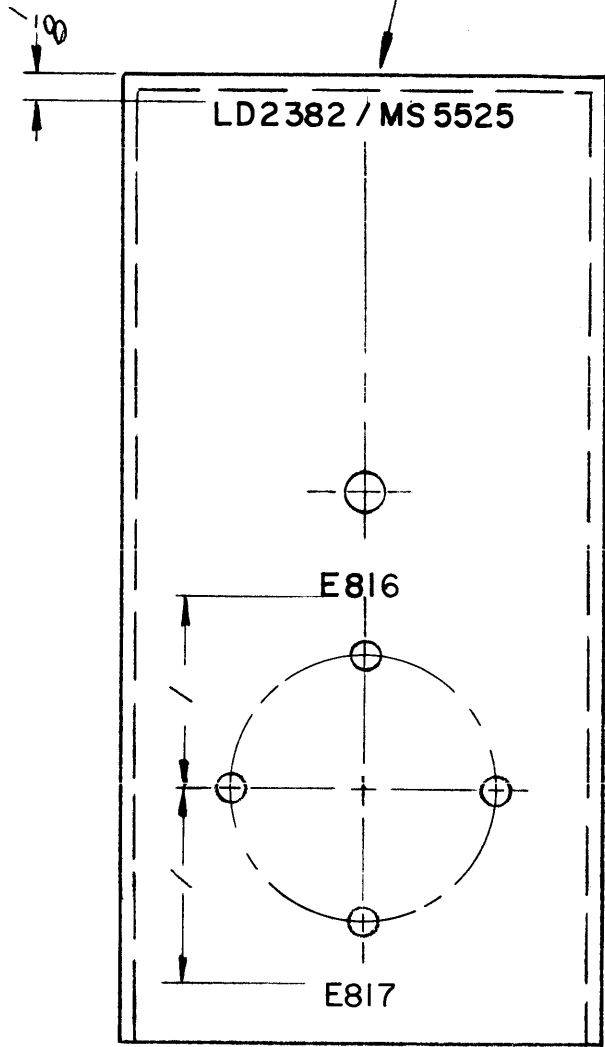
3

2

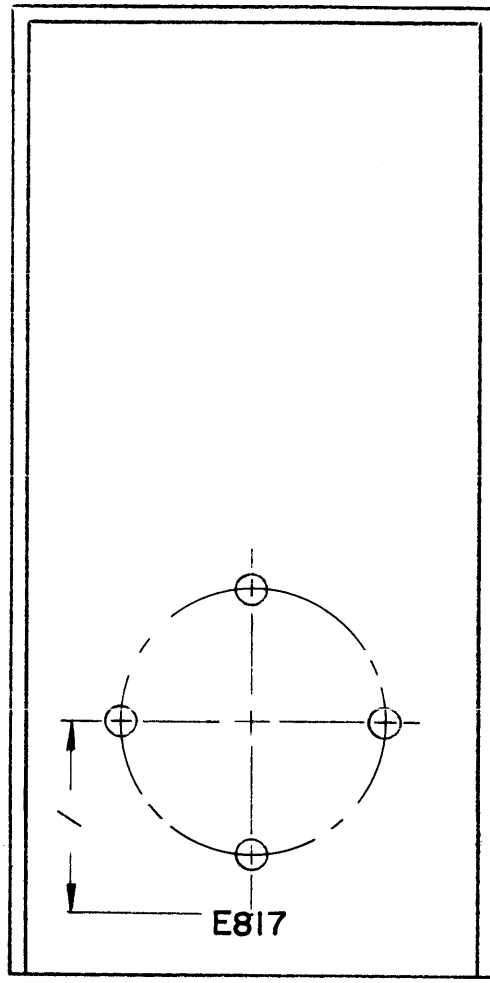
1

REVISIONS						
ZONE	LTR	DESCRIPTION	DATE	E.M.N.NO	DRAFT	CHKD APPD
	X	EXP. RELEASE	10/28/68		K.H.	
	Ø	ORIGINAL RELEASE	11/4/70		Ø	
	A	ADD E 817	12/7/70	20145	GE CW	P.S.H.

MARK TMC PART NUMBER  
1/8 HIGH GOTHIC WITH LATEST  
REVISION LETTER



FRONT VIEW



REAR VIEW

UNLESS OTHERWISE SPECIFIED:  
MARKING PROCESS: AS PER TMC SPECIFICATION S727  
LETTERING: 1/8 HIGH BLACK GOTHIC, LOCATED AS SHOWN

REF.: MS 5525

REQ'D	ITEM	PART NUMBER	DESCRIPTION	SYM.
<b>BUDETTI</b>				
LIST OF MATERIAL				
FINAL APPROV. <i>[Signature]</i> DATE 1-12-70				
MECH. DES. <i>[Signature]</i> DATE 12/20/70				
ELECT. DES. DATE				
CHECKED DATE				
DRAWN <i>[Signature]</i> DATE 10/29/69				
THE TECHNICAL MATERIEL CORP. MAMARONECK, NEW YORK				
MARKING, INPUT BRKT.				
SIZE	CODE IDENT. NO.	DWG NO.	ISSUE	
B	82679	LD 2382	A	
SCALE 1/1/1			SHEET OF	

QTY / UNIT	MODEL USED ON	ASS'Y NO.
1	PALA-10K	AP148
APPLICATION		
	CODE	

**NOTICE TO PERSONS RECEIVING THIS DRAWING**  
THE TECHNICAL MATERIEL CORPORATION claims proprietary right in the material disclosed hereon. This drawing is issued in confidence for engineering information only and may not be reproduced or used to manufacture anything shown hereon without permission from THE TECHNICAL MATERIEL CORPORATION to the user. This drawing is loaned for mutual assistance and is subject to recall at any time.

UNLESS OTHERWISE SPECIFIED  
DIMENSIONS ARE IN INCHES  
AND INCLUDE CHEMICALLY APPLIED  
OR PLATED FINISHES

DECIMALS	FRACTIONS
.X ± .05	TOLS. 1/64
.XX ± .01	ANGLES 0° -30'
.XXX ± .005	

MATERIAL

FINISH

5

4

3

2

1