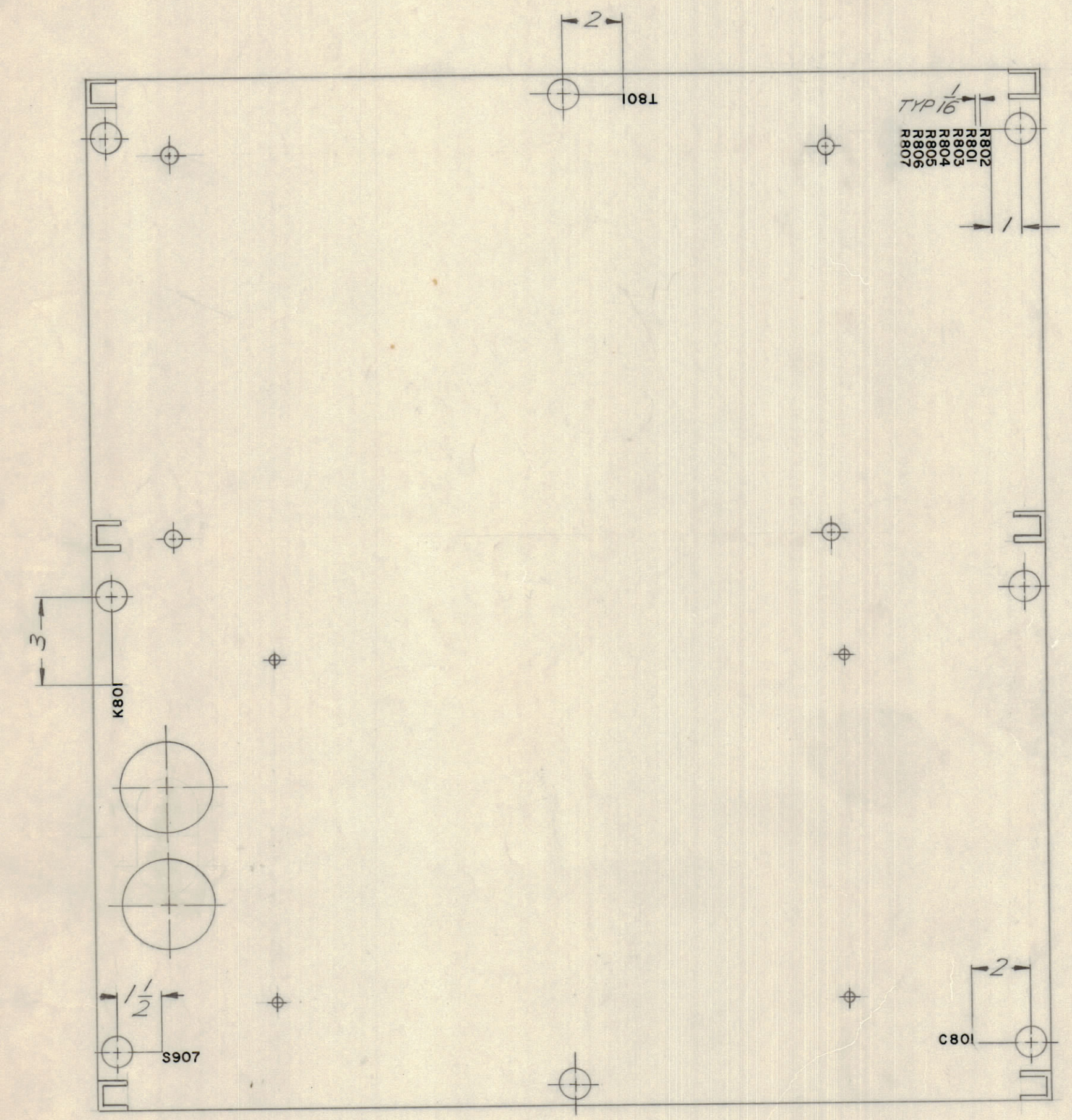
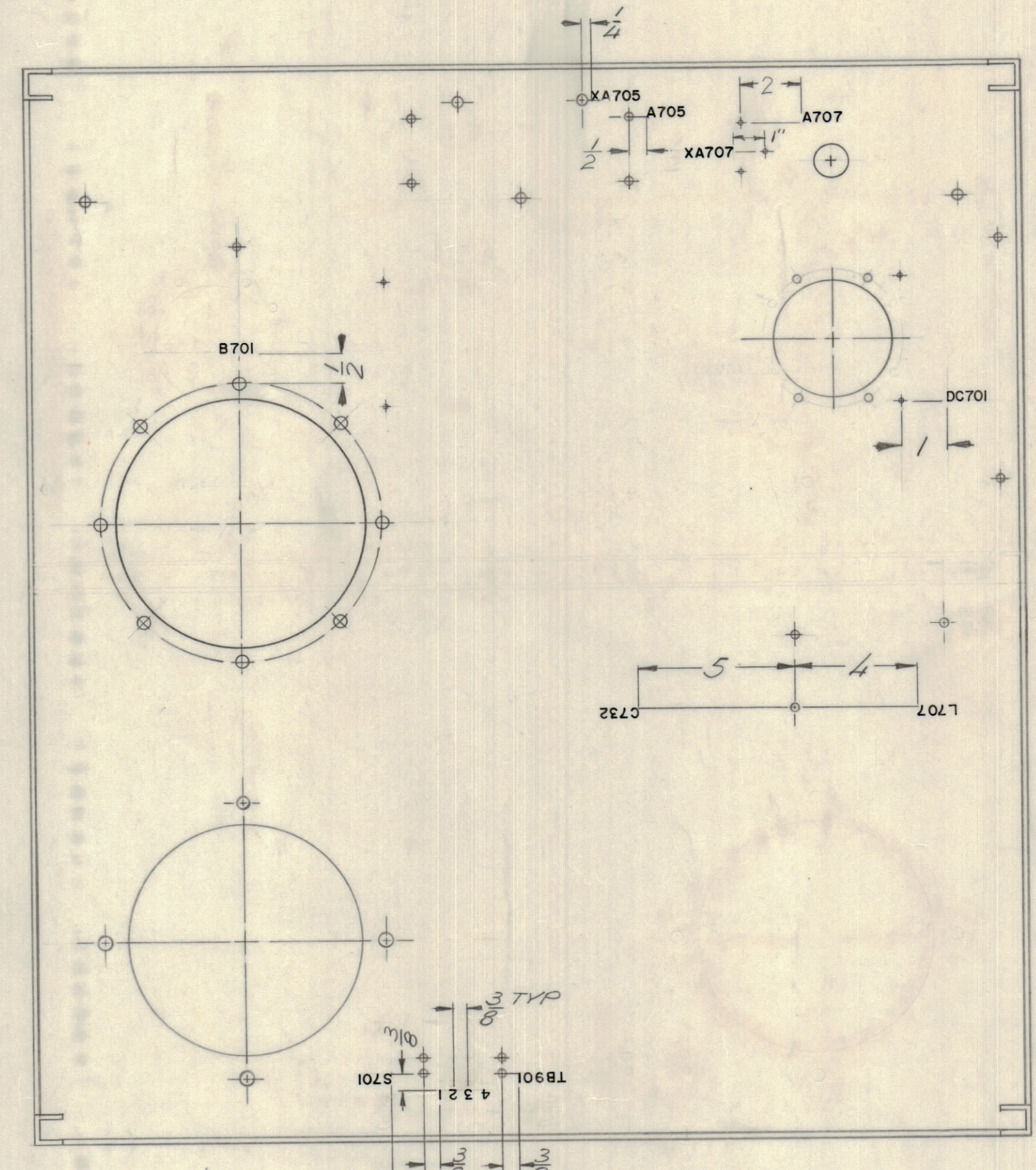


REVISIONS							
E.M.N.NO.	DRAFT	CHKD	ZONE	LTR	DESCRIPTION	DATE	APPROVED
	KH		X		EXP. RELEASE	10/24/69	
	KL		X1		L 713 & C 740 ADD.	11/17/69	
	KD		X2		ADD A 707	11/9/70	
	GE				ORIGINAL RELEASE FOR PRODUCTION	1-14-70	
19779	KLL	W.P.	A		DELE L 713, C 740	3/9/70	RT H.S.
20594	GE	EJ	B		RELOCATE DC 701 ON RACK TOP	4/12/72	EG
20738	CE	Φ	C		NO CHG. SEE OTHER SHEETS	6/14/72	EG
21020	CE	EJ	D		SEE SHEET 3	4/25/73	EJ



SECT. EE TOP VIEW



RACK TOP
BOTTOM VIEW

UNLESS OTHERWISE SPECIFIED:
 MARKING PROCESS: AS PER TMC SPECIFICATION S727
 LETTERING: 1/8 HIGH BLACK GOTHIC, LOCATED AS SHOWN

REF.: MS 5530

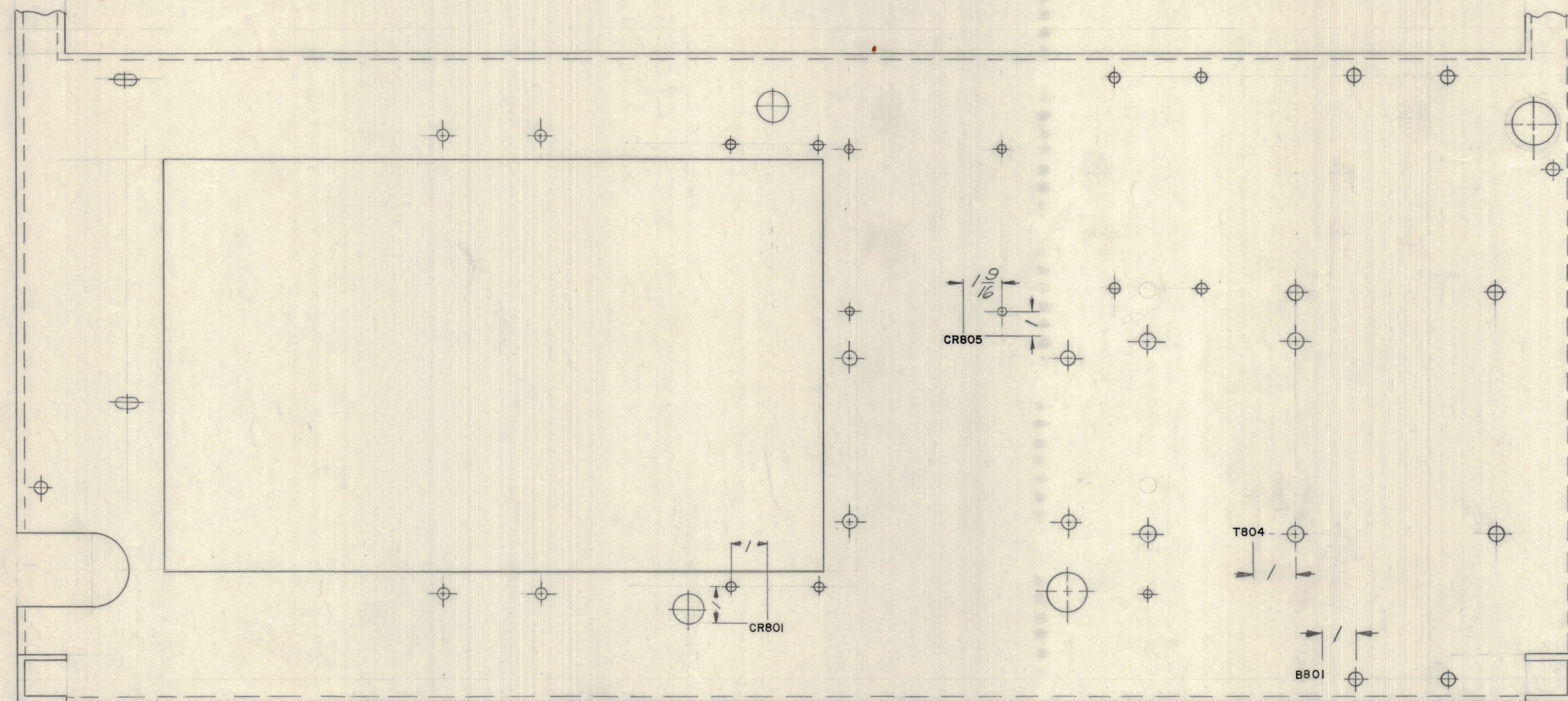
QTY / UNIT	MODEL USED ON	ASS'Y NO.
1	PALA 10K	AX 5085
APPLICATION		
	CODE	

QTY. REQ.	ITEM	PART NO.	DESCRIPTION	SYMBOL
F.B. LIST OF MATERIAL				
UNLESS OTHERWISE SPECIFIED DIMENSIONS ARE IN INCHES AND INCLUDE CHEMICALLY APPLIED OR PLATED FINISHES				
TOLERANCES ON				
DECIMALS		FRACTIONS		
.X ± .05		± 1/64		
.XX ± .01		ANGLES		
.XXX ± .005		± 0° - 30'		
MATERIAL				
FINISH				
SIZE			CODE IDENT NO.	DWG NO.
D			82679	LD 2379
SCALE				SHEET 1 OF 4

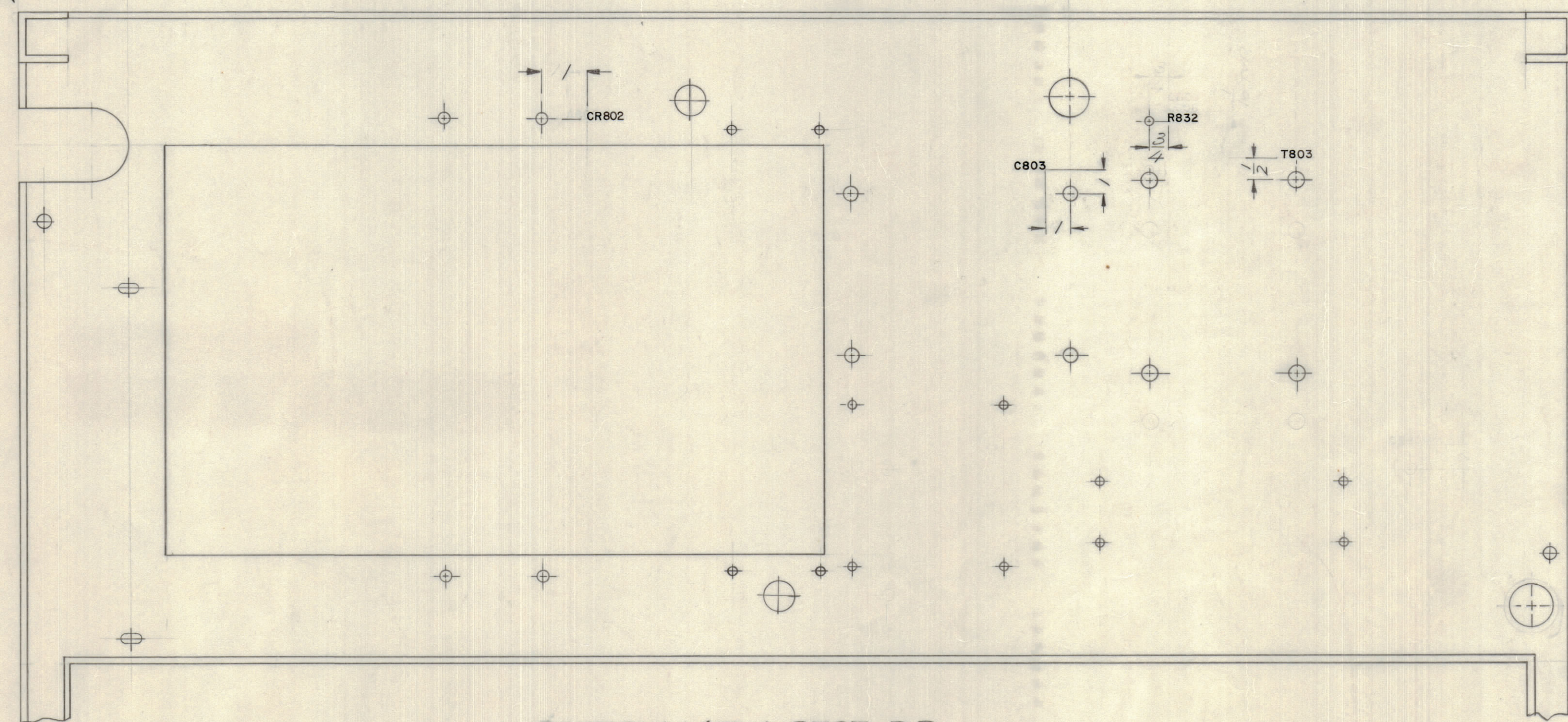
NOTICE TO PERSONS RECEIVING THIS DRAWING
 THE TECHNICAL MATERIEL CORPORATION claims proprietary right in the material disclosed hereon. This drawing is issued in confidence for engineering information only and may not be reproduced or used to manufacture anything shown herein without permission from THE TECHNICAL MATERIEL CORPORATION to the user. This drawing is loaned for mutual assistance and is subject to recall at any time.

THE TECHNICAL MATERIEL CORP.
 MAMARONECK, NEW YORK
 MARKING, MAIN FRAME

REVISIONS							
E.M.N.NO	DRAFT	CHKD	ZONE	LTR	DESCRIPTION	DATE	APPROVED
	EH			X	EXP. RELEASE	10/27/69	
	LH			XI	C808 & C809 ADD.	11/16/69	
	GE			D	ORIGINAL RELEASE FOR PRODUCTION	1.14.70	
19779	KLA	KR		A	DELE C808 & C809	3/9/70	RTA
20594	GE	g		B	REVISED TO CONFORM W/MS CHANGE	4/17/72	EG
20738	GE	ep		C	ADD CR801 LETT. & REV. TO CONFORM W/MS	6/14/72	EG
21020	GE	ej		D	SEE SHEET 3	4/25/73	EG



TOP VIEW SECT. DD



BOTTOM VIEW SECT. DD

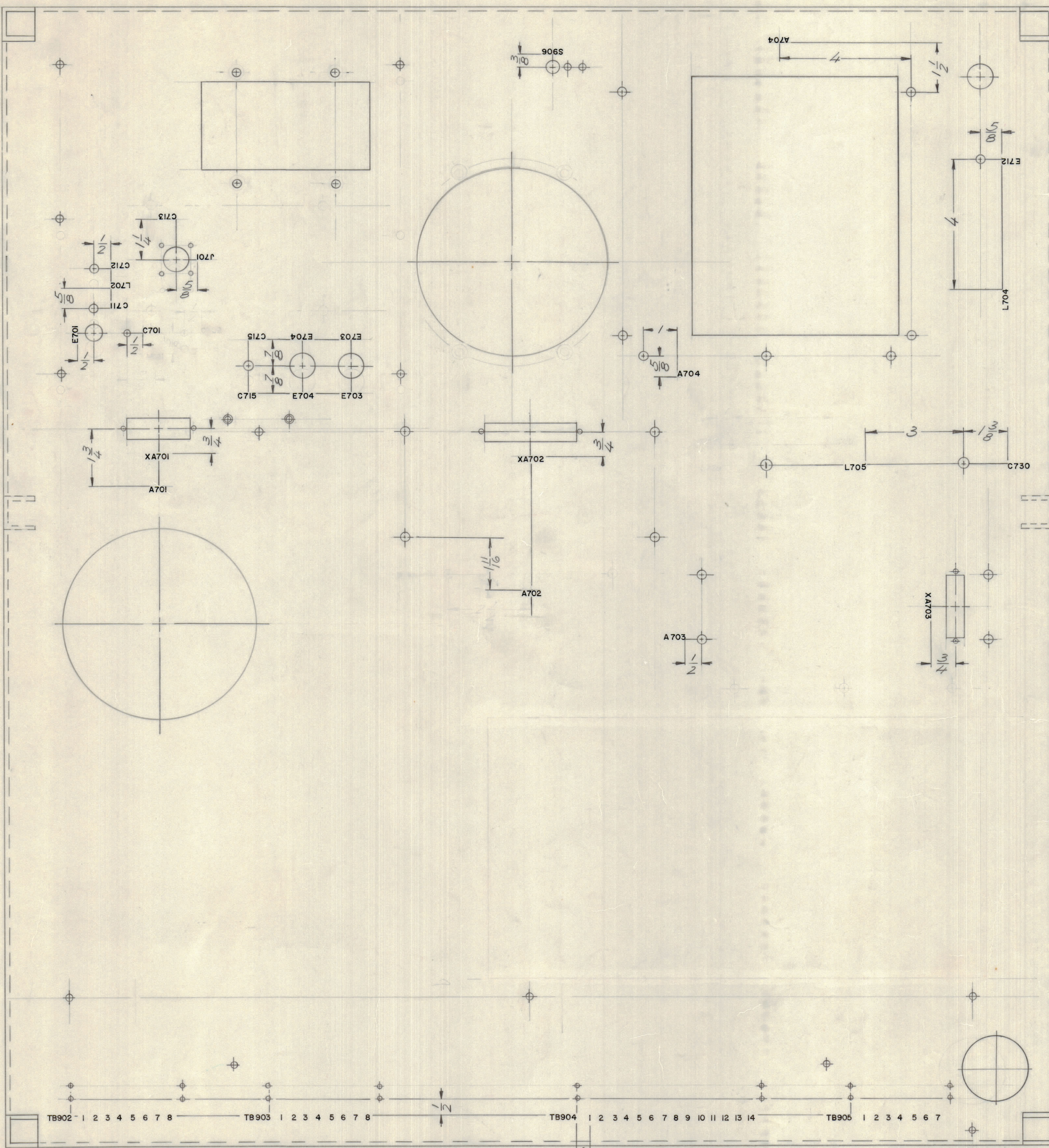
UNLESS OTHERWISE SPECIFIED:
 MARKING PROCESS: AS PER TMC SPECIFICATION S727
 LETTERING: 1/8 HIGH BLACK GOTHIC, LOCATED AS SHOWN

1	PALA-10K	AX-5085
QTY / UNIT	MODEL USED ON	ASS'Y NO.
	APPLICATION	
	CODE	
<small>NOTICE TO PERSONS RECEIVING THIS DRAWING</small> <small>THE TECHNICAL MATERIEL CORPORATION claims proprietary right in the material disclosed hereon. This drawing is issued in confidence for engineering information only and may not be reproduced or used to manufacture anything shown hereon without permission from THE TECHNICAL MATERIEL CORPORATION to the user. This drawing is loaned for mutual assistance and is subject to recall at any time.</small>		

UNLESS OTHERWISE SPECIFIED DIMENSIONS ARE IN INCHES AND INCLUDE CHEMICALLY APPLIED OR PLATED FINISHES	
TOLERANCES ON DECIMALS X ± .05 XX ± .01 XXX ± .005	FRACTIONS ± 1/64 ANGLES ± 0° - 30'
MATERIAL	FINISH

REF.: MS 5530

QTY. REQ.	ITEM	PART NO.	DESCRIPTION	SYMBOL
E.B. LIST OF MATERIAL				
FINAL APPROVAL	DATE	THE TECHNICAL MATERIEL CORP. MAMARONECK, NEW YORK		
MECH. DES.	DATE	MARKING, MAIN FRAME		
ELECT. DES.	DATE			
CHECKED	DATE			
DRAWN	DATE	SIZE	CODE IDENT NO.	DWG NO.
		D	82679	LD 2379
SCALE		SHEET 2 OF 4		



FRONT SECTION CC TOP VIEW

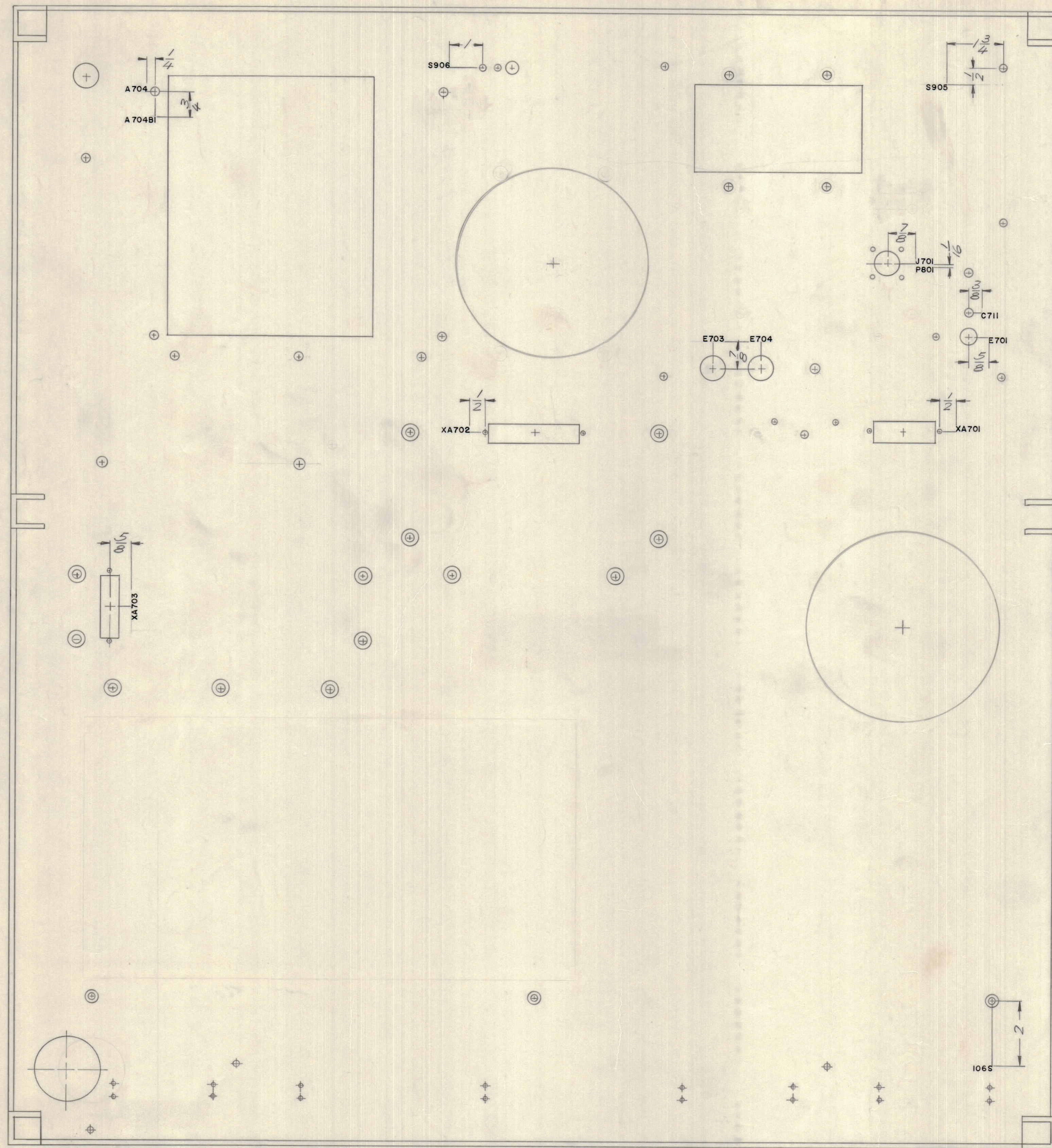
UNLESS OTHERWISE SPECIFIED:
 MARKING PROCESS: AS PER TMC SPECIFICATION S727
 LETTERING: 1/8 HIGH BLACK GOTHIC, LOCATED AS SHOWN

REVISIONS							
E.M.N.NO	DRAFT	CHKD	ZONE	LTR	DESCRIPTION	DATE	APPROVED
	KH			X	EXP. RELEASE	10/30/69	
	KH			XI	REVISED	11/10/69	
	GE			Ø	ORIGINAL RELEASE FOR PRODUCTION	1/14/70	
19779	KLK	g		A	SEE SHEET 1 & 2	3/9/70	RT K.P.
20514	GE	g		B	REVISED TO CONFORM W/ MS CHANGE	4-17-72	g
20738	GE	g		C	ADD MARKING FOR TB 902 - TB 905	6/14/72	g
21020	GE	g		D	DELETE MARKING FOR C739	4/25/73	g

REF.: MS 5530

QTY. REQ.	ITEM	PART NO.	DESCRIPTION	SYMBOL
E.B. LIST OF MATERIAL				
FINAL APPROVAL		DATE	THE TECHNICAL MATERIEL CORP.	
MECH. DES.		DATE	MAMARONECK, NEW YORK	
ELECT. DES.		DATE	MARKING, MAIN FRAME	
CHECKED		DATE		
DRAWN		DATE		
MATERIAL		DATE		
FINISH		DATE		
SIZE		CODE	IDENT NO.	DWG NO.
D		82679	LD 2379	
SCALE		1:2		SHEET 3 OF 4

QTY / UNIT	MODEL USED ON	ASSY NO.
1	PALA-10K	AX 5085
APPLICATION		
CODE		
NOTICE TO PERSONS RECEIVING THIS DRAWING		
THE TECHNICAL MATERIEL CORPORATION claims proprietary right in the material disclosed hereon. This drawing is issued in confidence for engineering information only and may not be reproduced or used to manufacture anything shown hereon without permission from THE TECHNICAL MATERIEL CORPORATION to the user. This drawing is loaned for mutual assistance and is subject to recall at any time.		



REVISIONS							
E.M.N.O.	DRAFT	CHKD	ZONE	LTR	DESCRIPTION	DATE	APPROVED
	GH			X	EXP. RELEASE	10/30/69	
	GE			B	ORIGINAL RELEASE FOR PRODUCTION	11/4/70	
19779	GH			A	SEE SHEET 1 & 2	3/9/70	RT KP
20594	GE			B	REVISED TO CONFORM W/ MS CHANGE	4/17/72	EP
20788	GE			C	REVISED TO CONFORM W/ MS CHANGE	6/14/72	EP
21020	GE			D	SEE SHEET 3	4/25/73	EP

UNLESS OTHERWISE SPECIFIED:
 MARKING PROCESS: AS PER TMC SPECIFICATION S727
 LETTERING: 1/8 HIGH BLACK GOTHIC, LOCATED AS SHOWN

FRONT
SECTION CC BOTTOM VIEW

REF.: MS 5530

1	PALA 16K	AX 5085
QTY / UNIT	MODEL USED ON	ASS'Y NO.
APPLICATION		
CODE		

QTY. REQ.	ITEM	PART NO.	DESCRIPTION	SYMBOL
LIST OF MATERIAL				
THE TECHNICAL MATERIEL CORP. MAMARONECK, NEW YORK				
MARKING, MAIN FRAME				
MATERIAL		SIZE CODE IDENT NO. DWG NO.		ISSUE
FINISH		D 82679	LD 2379	D
SCALE 1:2				SHEET 4 OF 4

NOTICE TO PERSONS RECEIVING THIS DRAWING
 THE TECHNICAL MATERIEL CORPORATION claims proprietary right in the material disclosed herein. This drawing is issued in confidence for engineering information only and may not be reproduced or used to manufacture anything shown hereon without permission from THE TECHNICAL MATERIEL CORPORATION to the user. This drawing is loaned for mutual assistance and is subject to recall at any time.

LD 2379