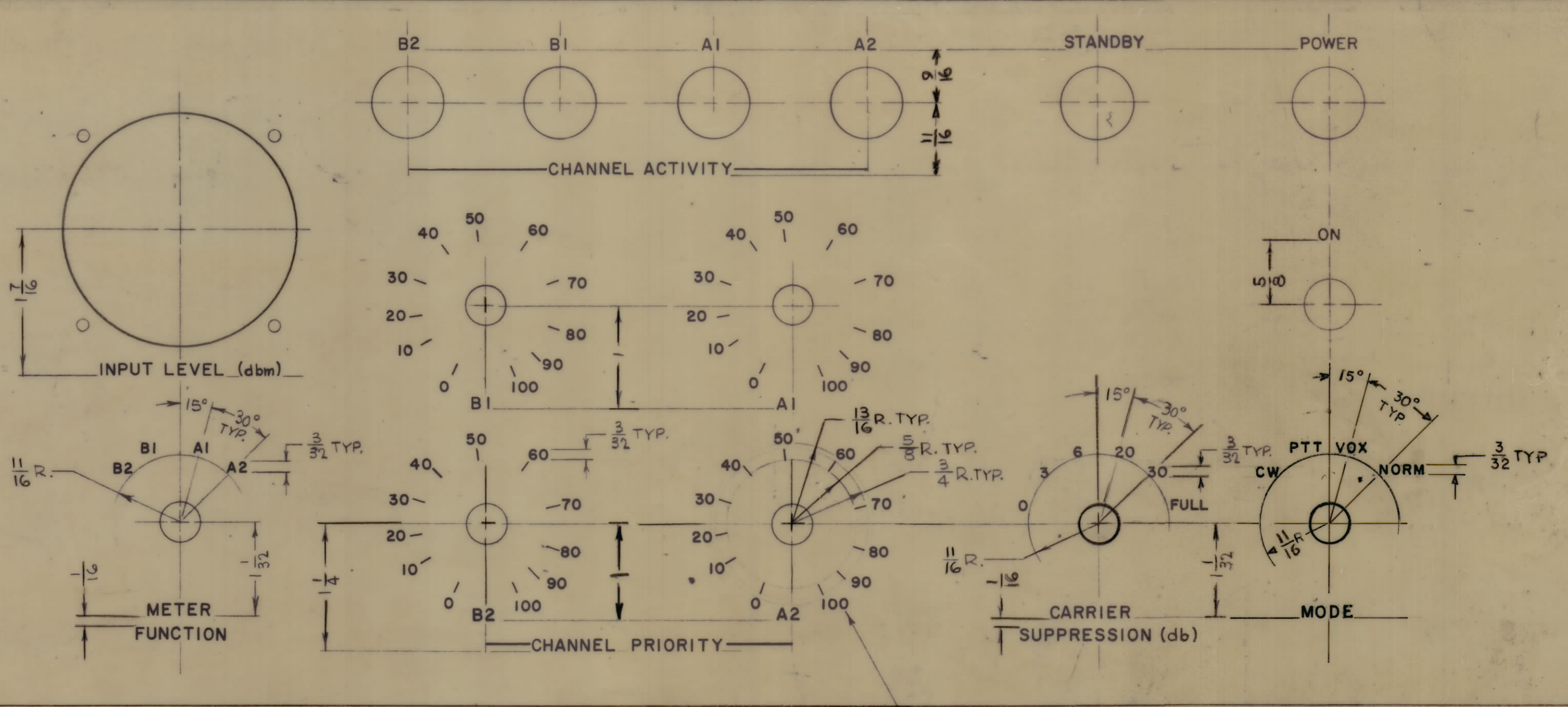


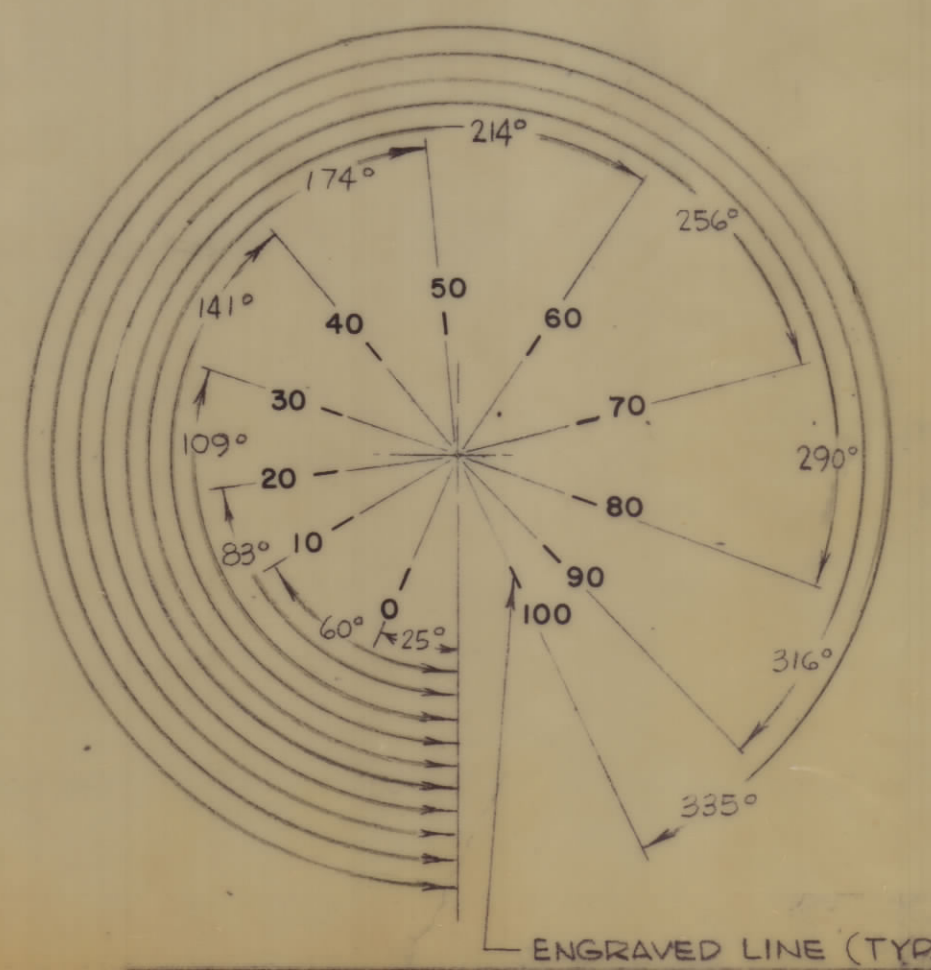
REVISIONS							
ZONE	SYM	DESCRIPTION	DATE	E.M.N. NO.	DRAFT	CHKD	APPD
		ORIGINAL RELEASE FOR PRODUCTION	2.25.69		RG		
	A	SEE SHEET 2	11.30.72	20956	CE	EJ	EJ



FRONT VIEW OF PANEL SHOWN

MARK TMC PART NO. 1/8 HIGH BLACK GOTHIC AS PER TMC SPEC. 5-727, ON REAR OF PANEL (SEE LD2347 SHEET 2 OF 2)

SEE DETAIL "A" FOR PLACEMENT OF MARKINGS



DETAIL "A" (TYP. 4 PLACES)

HEIGHT OF LETTERS	DEPTH OF STROKE	WIDTH OF STROKE
3/32	.010	.010
1/8	.010	.020
LINES	.010	.015

- UNLESS OTHERWISE SPECIFIED:
- 1- ALL LETTERING TO BE 1/8 HIGH GOTHIC WHITE FILLED.
 - 2- ALL LINES TO BE WHITE FILLED.
 - 3- ALL LETTER GROUPS TO BE CENTERED ON HOLES.
 - 4- ENGRAVING PROCESS AS PER TMC SPEC. 5-566.

ENGRAVED LINE (TYP.)

NOTES

Q'TY./UNIT	MODEL USED ON	ASS'Y. NO.
SCALE 1:1	CODE	

THE CONTENTS OF THIS DRAWING ARE THE EXCLUSIVE PROPERTY OF THE TECHNICAL MATERIEL CORP. ITS UNAUTHORIZED USE OR REPRODUCTION IN WHOLE OR IN PART IS STRICTLY FORBIDDEN.

REF MS 5454

REQ'D.	ITEM	PART NUMBER	DESCRIPTION	SYMBOL
LIST OF MATERIAL Formerly 5013-1B				
MATERIAL		THE TECHNICAL MATERIEL CORP. MAMARONECK, NEW YORK		
FINISH		TITLE MARKING, PANEL, FRONT (EXTERIOR)		
UNLESS OTHERWISE SPECIFIED DIMENSIONS ARE IN INCHES AND INCLUDE CHEMICALLY APPLIED OR PLATED FINISHES	DRAWN GE	DATE JUL 69	FINAL APPROVAL JHE	DATE
DECIMALS .X ± .05 .XX ± .01 .XXX ± .005	TOLERANCES	FRACTIONS ± 1/64 ANGLES ± 0° 30'	ELECT. DES. JTB	DATE 2.25.69
SHEET 1 OF 2				REV. LTR. A

LD2347 A