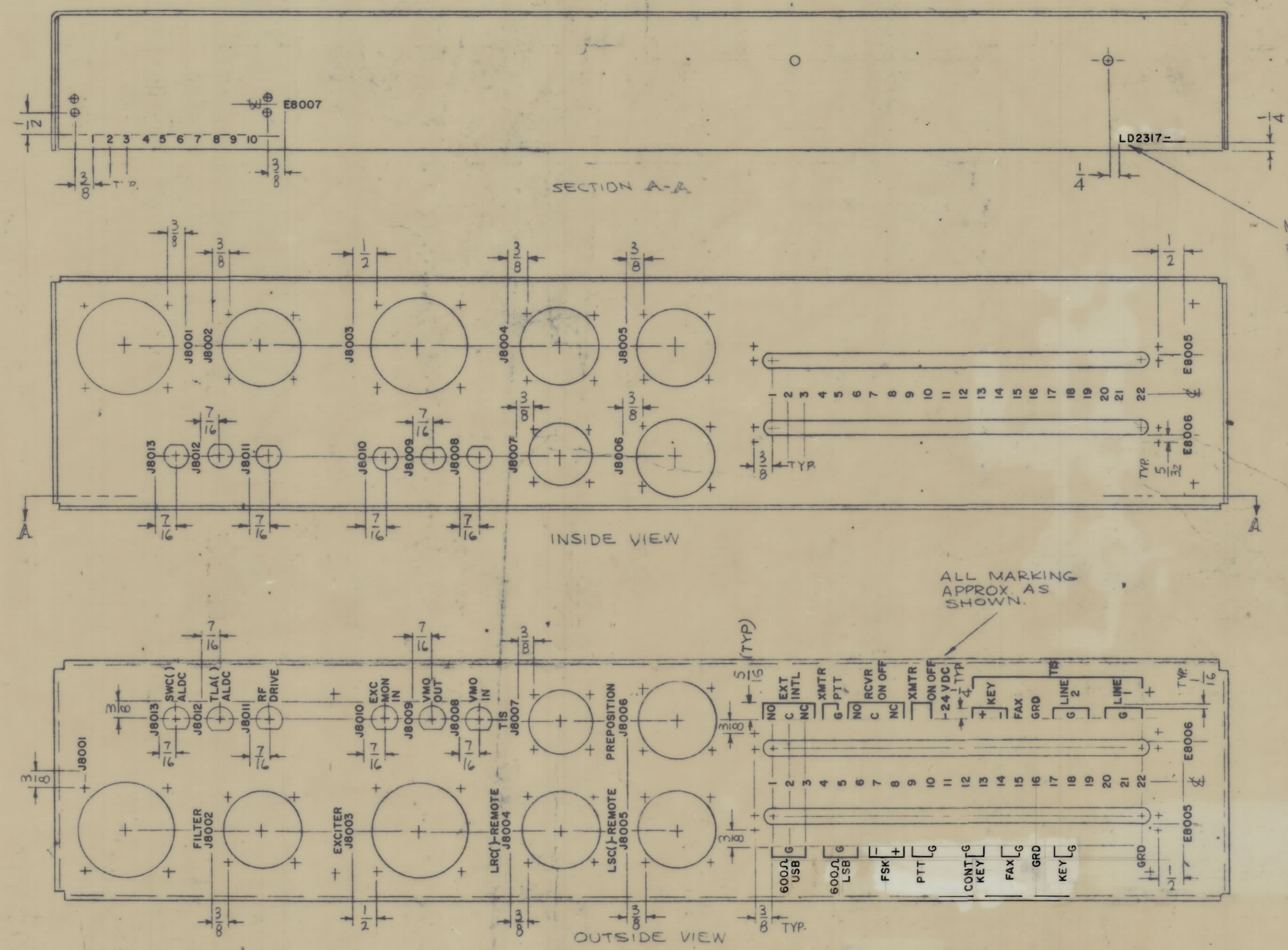


REVISIONS					
ZONE	SYM	DESCRIPTION	DATE	E.M.N. NO.	APPD
	X	EXP. RELEASE	5.7.68	X	
	Ø	ORIGINAL RELEASE FOR PRODUCTION	5.7.68	Ø	



MARK TMC P/N  
HIGH GOthic  
W/LATEST REV.  
LETTER.

ALL MARKING  
APPROX AS  
SHOWN.

- UNLESS OTHERWISE SPECIFIED:
- 1-1/16 SPACING BETWEEN ALL WORDS, & ALL WORDS & LINES.
  - 2-MARKING PROCESS: AS PER TMC SPECIFICATION S-727.
  - 3-LETTERING: 1/8 HIGH BLACK GOthic, LOCATED AS SHOWN. LINE WORK, BLACK.

NOTES

1	RAK-110-2	BMA160
SCALE	1:2	CODE
THE CONTENTS OF THIS DRAWING ARE THE EXCLUSIVE PROPERTY OF THE TECHNICAL MATERIEL CORP. NO UNAUTHORIZED USE OR REPRODUCTION IN WHOLE OR IN PART IS STRICTLY FORBIDDEN.		

REF M55021-

REQ'D	ITEM	PART NUMBER	DESCRIPTION	SYMBOL
F BUDETTI LIST OF MATERIAL				
MATERIAL				
THE TECHNICAL MATERIEL CORP. MAMARONECK, NEW YORK				
TITLE: MARKING, CHASSIS, TERMINAL AS PER TMC SPEC. S727				
DRAWN: <i>cm</i>		DATE: 7-15-66		FINAL APPROVAL
CHECKED: <i>RT</i>		DATE: 5-7-68		
ELECT. DES: <i>RT</i>		DATE: 5-7-68		
MECH. DES: <i>RT</i>		DATE: 7-2-66		
UNLESS OTHERWISE SPECIFIED DIMENSIONS ARE IN INCHES AND INCLUDE CHEMICALLY APPLIED OR PLATED FINISHES				LD2317
DECIMALS: 0.01-0.05		FRACTIONS: 1/16-1/4		
TOLERANCES: ±0.001		±0.010		
REV. 1.0				

LD2317