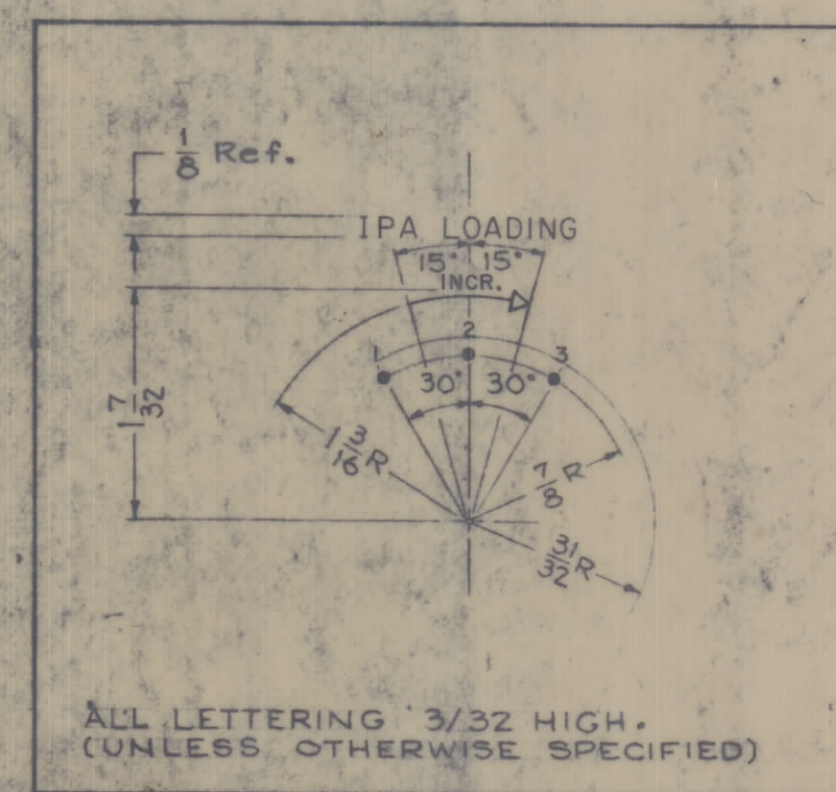
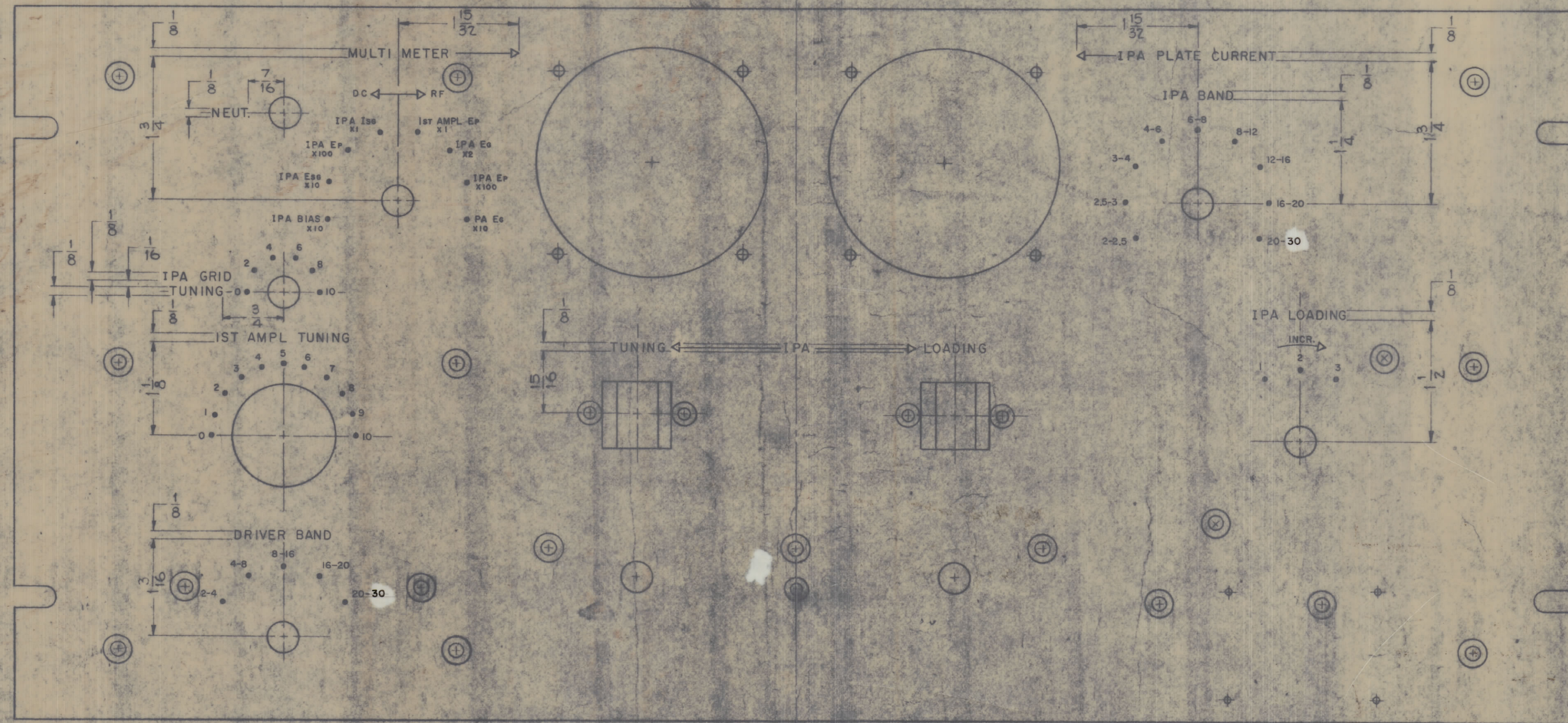
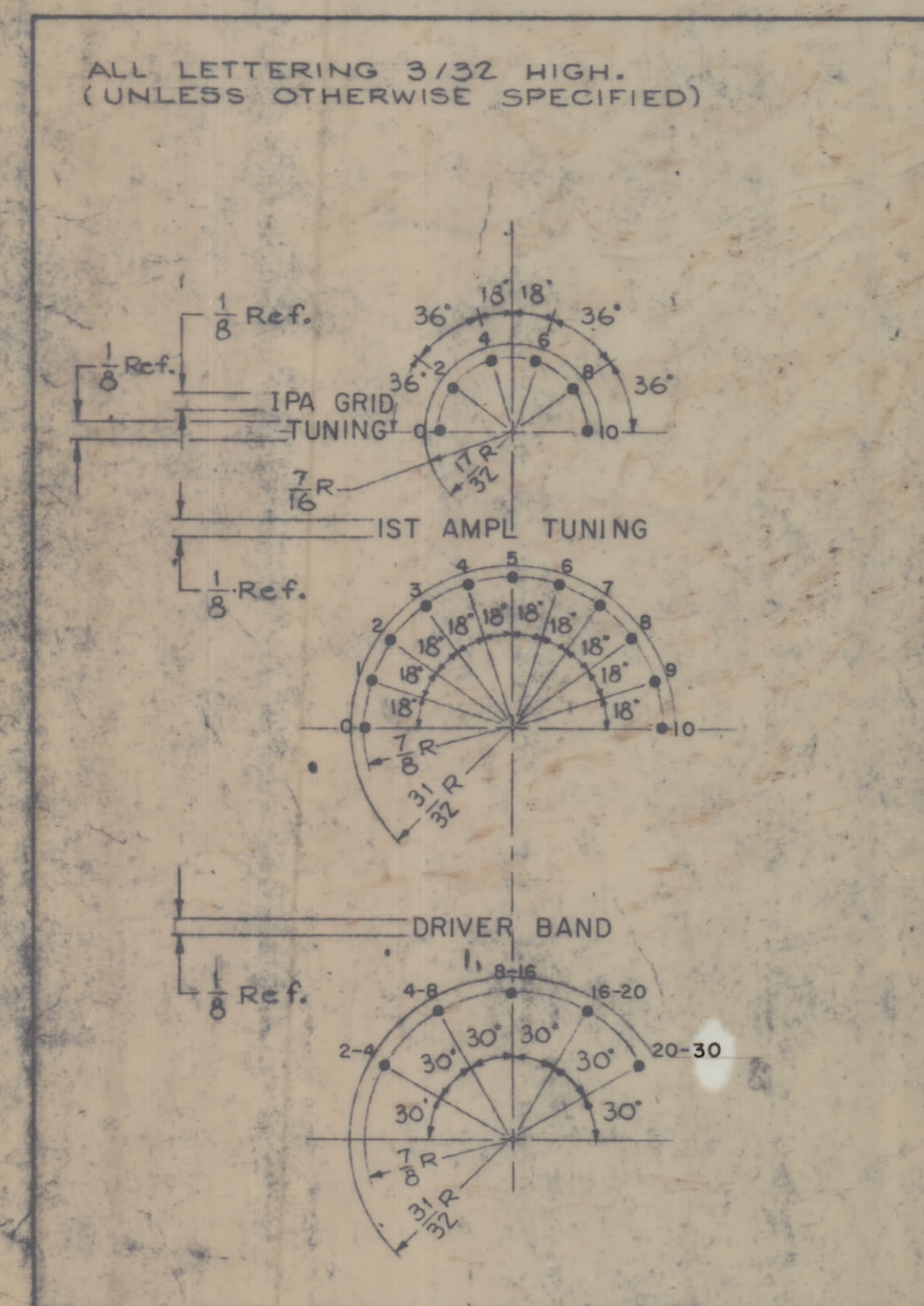
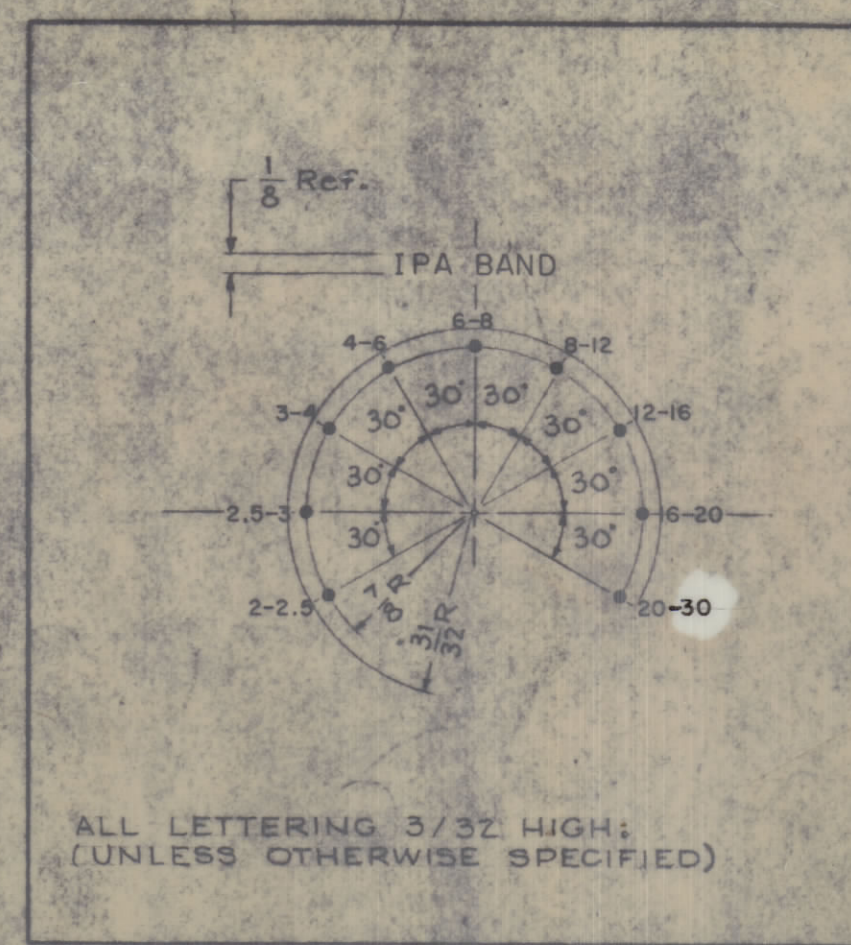
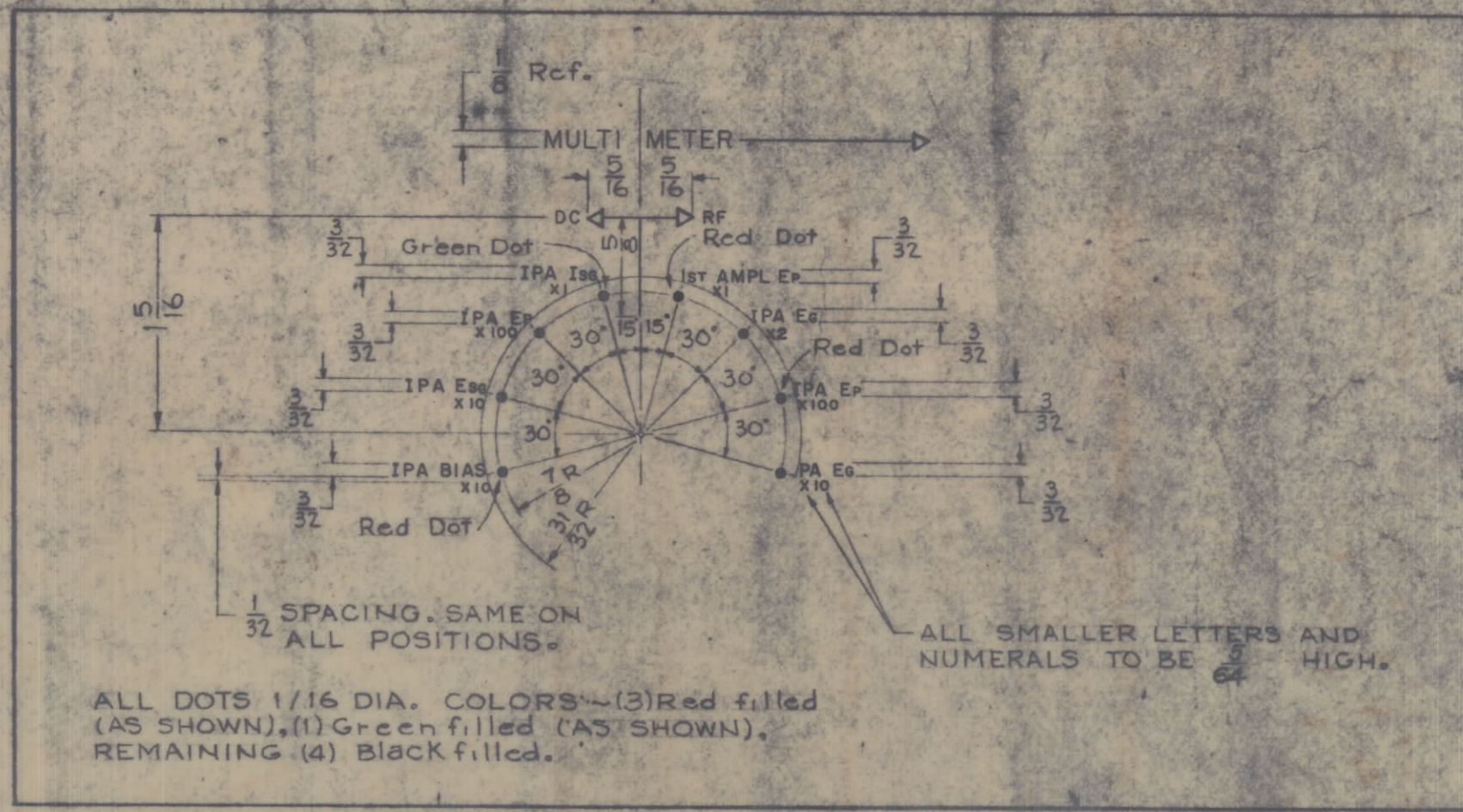


IF IT IS FOUND DESIRABLE TO CHANGE ANY TOLERANCE OR OTHER DETAIL SPECIFIED ON THIS DRAWING NOTIFY THE PURCHASER PROMPTLY.  
 MAXIMUM ALLOWABLE TOLERANCES HAVE BEEN DETERMINED AND DEVIATIONS WILL BE CAUSE FOR REJECTION. REMOVE ALL BURRS AND SHARP EDGES.



- NOTES -
- 1- ALL DOTS TO BE 1/16 DIA., WHITE FILLED, UNLESS OTHERWISE SPECIFIED.
  - 2- ALL LETTERING TO BE WHITE FILLED.
  - 3- ALL ARROWHEADS TO BE 1/8 X 1/8 X 1/8 TRIANGLE, WHITE OUTLINED.
  - 4- ALL LINES TO BE WHITE FILLED.

LETTER	DEPTH OF	WIDTH OF
HETZMAT	STROKE	STROKES
5/16	.010-.012	.012-.015
3/32	.010	.015
1/8	.010	.020
DOTS	.010	—
ARROWHEADS	.010	—
SOLID LINES	.010	.015

ORIGINAL RELEASE FOR PRODUCTION	22068	22068	22068
EXP RELEASE	22068	22068	22068
ISSUE ITEM	CHANGED FROM	DATE	CH. NO. OR DATE CHECKER ENG. APP.
TOLERANCES		SCALE:	
ALL OTHERS	DEC. DIM. ±	DRILL PUNCH, COMMERCIAL STOCK SIZES AND MANUFACTURERS TOLERANCES ARE NOT INCLUDED.	

1	RFC-1C	%GPT-10KRL	2-20-68
---	--------	------------	---------

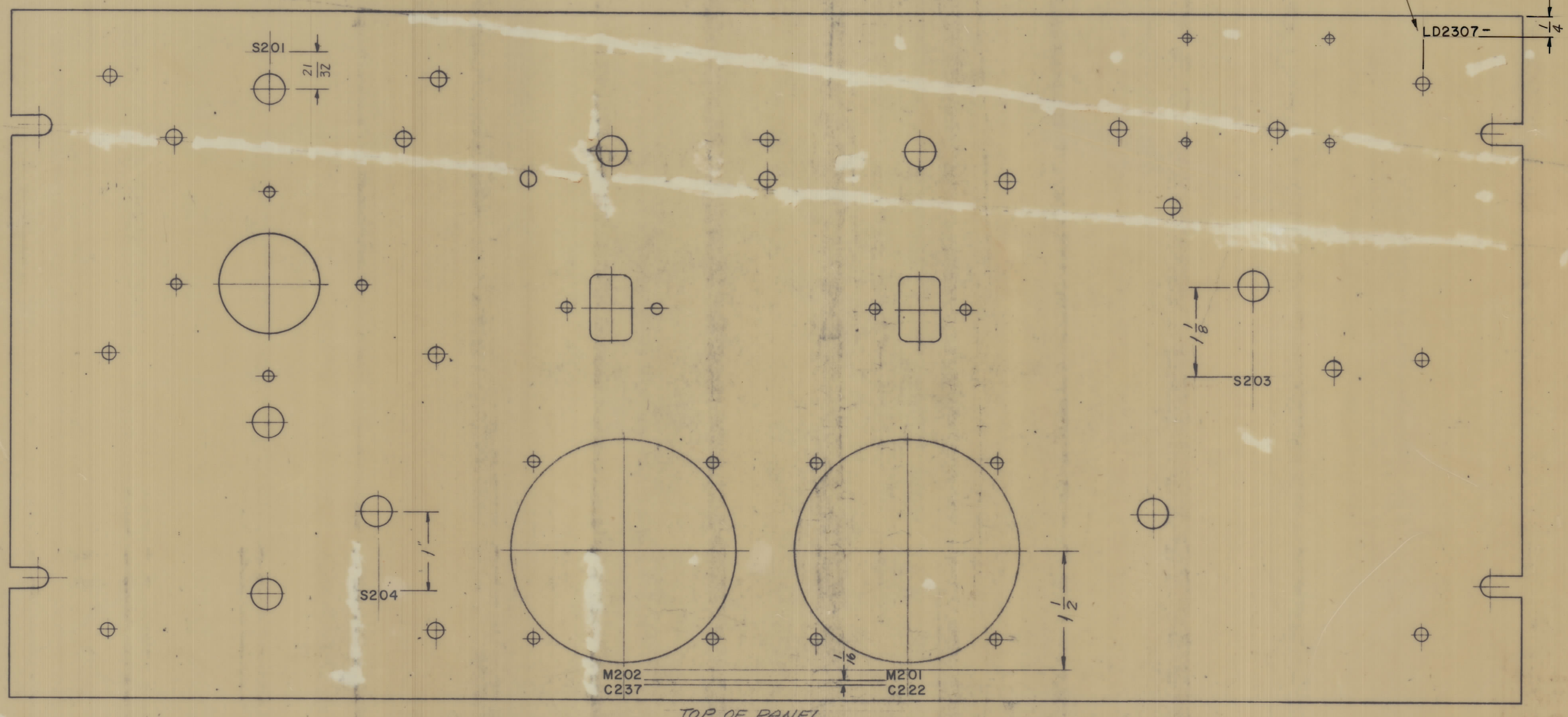
REF - TMC DWG NO. MS-1426 (8)

REQ. ITEM	PART NO.	O. POSE	DESCRIPTION	SYMBOL
THE TECHNICAL MATERIEL CORP. MAMARONECK, NEW YORK				
ENGRAVING, FRONT PANEL				
RFC-1C				
DRAWN: [Signature] ELEC. DES. APP. [Signature]				
CHECKED: [Signature] FINAL APPROVAL: [Signature]				

LD2307

SHEET 1 OF 2

LD2307



MARKING PROCESS: AS PER TMC SPEC. S-727  
 LETTERING TO BE 1/8 HIGH BLACK, GOTHIC

LD2307

ORIGINAL RELEASE FOR PRODUCTION		DATE	CH. NO.	DRAFTS	CHECKER	ENG. APP.
EXP. RELEASE		2-20-68				
SYM	ZONE	DESCRIPTION	DATE	CH. NO.	DRAFTS	CHECKER

TMC FORM NO. 111

REQ. PER UNIT	MODEL	SECTION	ASSY. NO.	DATE
1	RFC-1C			2-20-68

REQ. ITEM	PART NO.	O. POSE		DESCRIPTION	SYMBOL
				THE TECHNICAL MATERIEL CORP. MAMARONECK, NEW YORK	
				LETTERING, FRONT PANEL, REAR	
				LD2307	

REF: MS-1426 (8)