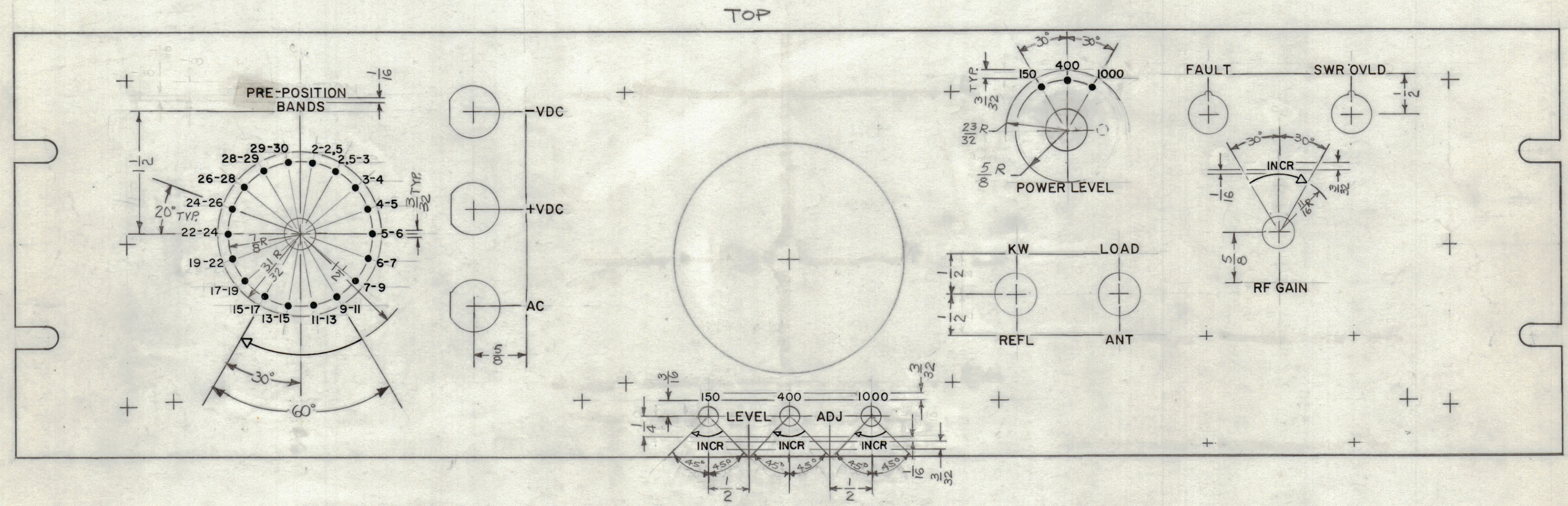


REVISIONS						
ZONE	LTR	DESCRIPTION	DATE	E.M.N.NO	DRAFT	CHKD APPD
	X	EXP. RELEASE	1.11.68		A.P.	<i>[Signature]</i> <i>[Signature]</i>
	Ø	ORIGINAL RELEASE FOR PRODUCTION	5.7.68	Ø	<i>[Signature]</i>	<i>[Signature]</i>



HEIGHT OF LETTER	DEPTH OF STROKE	WIDTH OF STROKE
3/32	.010	.015
1/8	.010	.020
3/16	.010	.025
LINES	.010	.015
DOTS	.010	1/16 DIA.
ARROWS	.010	.015

- UNLESS OTHERWISE SPECIFIED:
- 1- ALL ENGRAVING TO BE 1/8 HIGH GOTHIC AS PER TMC SPEC. S566.
  - 2- ALL ENGRAVING TO BE WHITE FILLED.
  - 3- ALL LETTER GROUPS TO BE CENTERED ON HOLES.
  - 4- ALL ARROWHEADS WHITE OUTLINE FILL.

QTY. REQ.	ITEM	PART NO.	DESCRIPTION	SYMBOL
REF: MS 5310				
BUDETTI LIST OF MATERIAL				
THE TECHNICAL MATERIEL CORP. MAMARONECK, NEW YORK				
MARKING, PANEL, FRONT (FRONT VIEW SHOWN)				
SIZE	CODE IDENT. NO.	DWG NO.	ISSUE	
C	82679	LD 2286	Ø	
SCALE DO NOT SCALE				SHEET 1 OF 2

1	SWCD-3K	
QTY / UNIT	MODEL USED ON	ASS'Y NO.
APPLICATION		
CODE	S 401-451	
NOTICE TO PERSONS RECEIVING THIS DRAWING		
THE TECHNICAL MATERIEL CORPORATION claims proprietary right in the material disclosed hereon. This drawing is issued in confidence for engineering information only and may not be reproduced or used to manufacture anything shown hereon without permission from THE TECHNICAL MATERIEL CORPORATION to the user. This drawing is loaned for mutual assistance and is subject to recall at any time.		
MATERIAL		
FINISH		

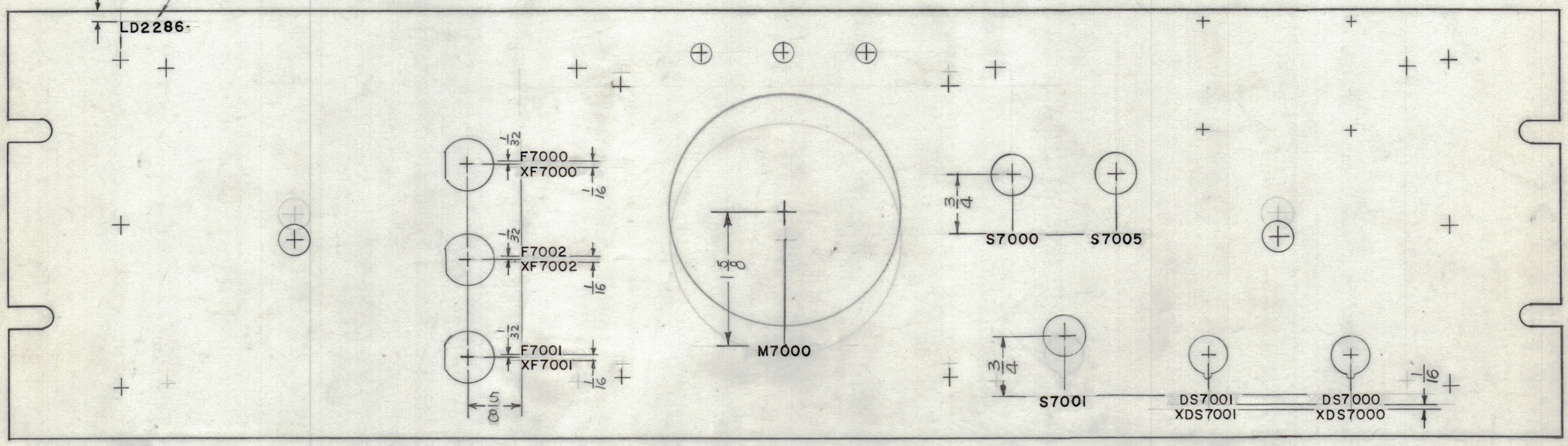
UNLESS OTHERWISE SPECIFIED DIMENSIONS ARE IN INCHES AND INCLUDE CHEMICALLY APPLIED OR PLATED FINISHES

TOLERANCES ON

DECIMALS	FRACTIONS
.X ± .05	± 1/64
.XX ± .01	ANGLES
.XXX ± .005	± 0° -30'

REVISIONS							
ZONE	LTR	DESCRIPTION	DATE	E.M.N.NO	DRAFT	CHKD	APPD
	X	EXP. RELEASE	1/11/68		A.P.		
	Ø	ORIGINAL RELEASE FOR PRODUCTION	5.7.68	Ø			

MARK TMC P/N  $\frac{1}{8}$  HIGH GOTHIC  
W/LATEST REV. LETTER



(TOP)  
REAR VIEW

UNLESS OTHERWISE SPECIFIED:  
1. ALL LETTERGROUPS TO BE CENTERED ON HOLES

MARKING PROCESS: AS PER TMC SPECIFICATION S-727.  
LETTERING: 1/8 HIGH BLACK GOTHIC, LOCATED AS SHOWN.

REF:MS5310

1	SWCD-3K	
QTY / UNIT	MODEL USED ON	ASS'Y NO.
APPLICATION		
CODE	S401-451	

NOTICE TO PERSONS RECEIVING THIS DRAWING  
THE TECHNICAL MATERIEL CORPORATION claims proprietary right in the material disclosed hereon. This drawing is issued in confidence for engineering information only and may not be reproduced or used to manufacture anything shown hereon without permission from THE TECHNICAL MATERIEL CORPORATION to the user. This drawing is loaned for mutual assistance and is subject to recall at any time.

UNLESS OTHERWISE SPECIFIED  
DIMENSIONS ARE IN INCHES  
AND INCLUDE CHEMICALLY APPLIED  
OR PLATED FINISHES

TOLERANCES ON

DECIMALS	FRACTIONS
.X ± .05	± 1/64
.XX ± .01	ANGLES
.XXX ± .005	± 0° -30'

MATERIAL

FINISH

QTY. REQ.	ITEM	PART NO.	DESCRIPTION	SYMBOL
BUDETTI LIST OF MATERIAL				
FINAL APPROVAL		DATE		
MECH. DES.		DATE		
ELECT. DES.		DATE		
CHECKED		DATE		
DRAWN		DATE		
THE TECHNICAL MATERIEL CORP. MAMARONECK, NEW YORK		MARKING, PANEL, FRONT		
SIZE	CODE IDENT.NO.	DWG NO.	ISSUE	
C	82679	LD2286	Ø	
SCALE $\frac{DO NOT SCALE}{SCALE}$				SHEET 2 OF 2