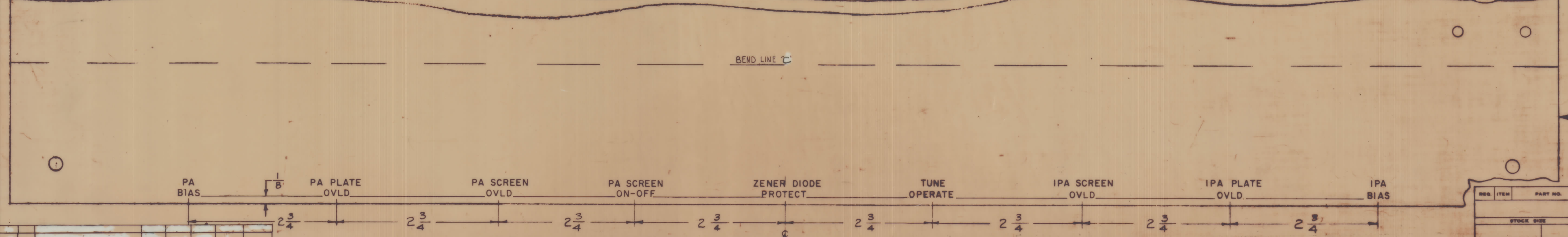
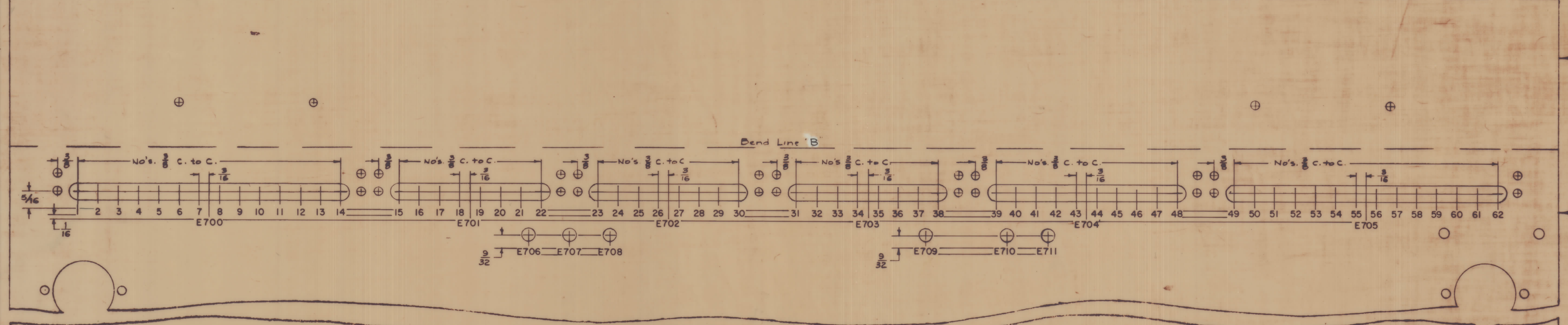
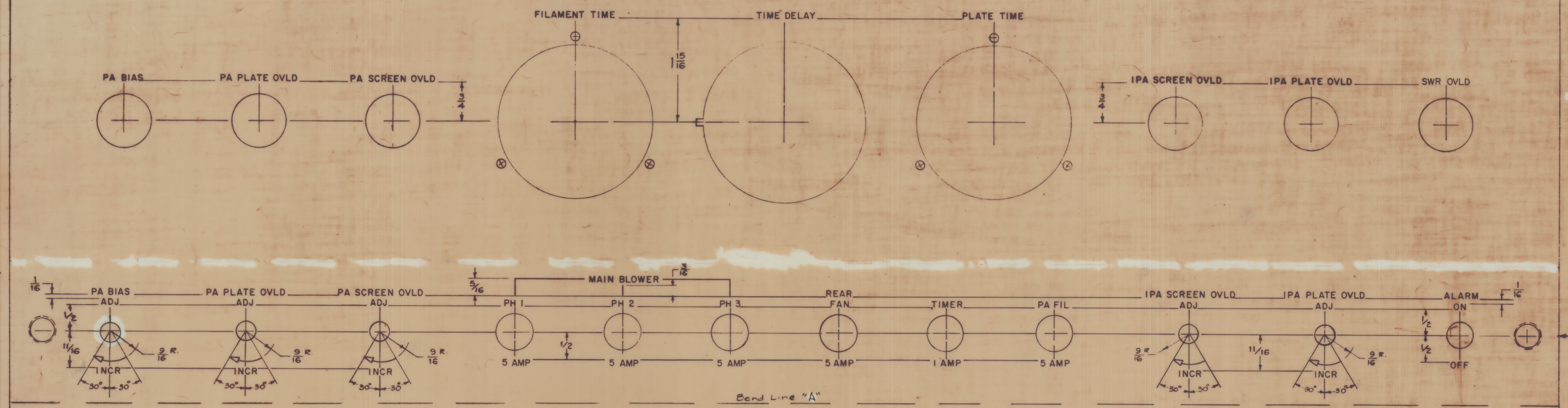


IT IS PREFERRED TO CHANGE ANY TOLERANCE OR OTHER DETAIL SPECIFIED ON THIS DRAWING NOTIFY THE PURCHASER PROMPTLY.  
 MAXIMUM ALLOWABLE TOLERANCES HAVE BEEN DETERMINED AND DEVIATIONS WILL BE CAUSE FOR REJECTION. REMOVE ALL BURRS AND SHARP EDGES.



ORIG. RELEASE	2-18-44	EG	
EXPERIMENTAL RELEASE	8-16-47		
CHANGED FROM	DATE	BY	APP.
TOLERANCES			
SCALE: DO NOT SCALE			
DRILL PUNCH COMMERCIAL STOCK			
SIZES AND MANUFACTURERS			
TOLERANCES ARE NOT INCLUDED			

All Engraving to be White Filled.  
 All Lettering to be 1/8 high Gothic.  
 DEPTH OF STROKE .010  
 WIDTH OF STROKE .020  
 LINE WORK .010  
 ARROWHEADS .010  
 (Approx. Size Shown)

FRONT VIEW SHOWN  
 Note - Panel is shown in a "Flattened" View to clearly show all lettering.

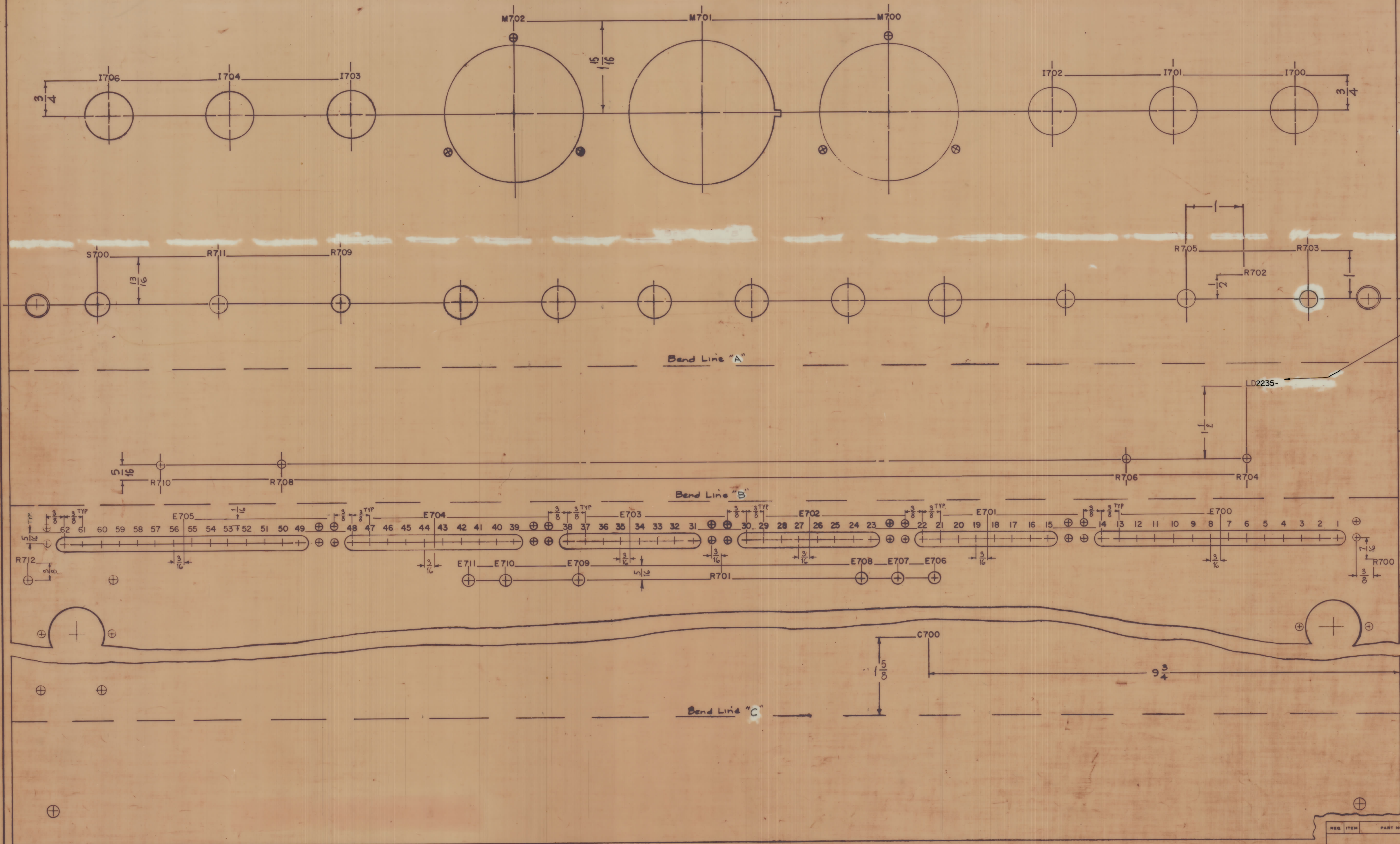
1	GPT-10K RL	PROJECT NO.	8-16-47
REQ PER UNIT	MODEL	APPY. NO.	DATE
USED ON			

DESIGNER	F. BUDETTI	DESCRIPTION	MARKING, FRONT PANEL
STOCK SIZE		MARKING PROCESS	ENGRAVING
MATERIAL		BY	
WEIGHT PER PC.		ELEC. DES. APP.	
TYPE & TEMPER.		MECH. DES. APP.	
HEAT TREAT. SPEC.		INSPECTED	
FINISH & SPEC. NO.		FINAL APPROVAL	

LD2235

REF: MS 5128-

IF IT IS FOUND DESIRABLE TO CHANGE ANY TOLERANCE OR OTHER DETAIL SPECIFIED ON THIS DRAWING NOTIFY THE PURCHASER PROMPTLY.  
 MAXIMUM ALLOWABLE TOLERANCES HAVE BEEN DETERMINED AND DEVIATIONS WILL BE CAUSE FOR REJECTION.  
 REMOVE ALL BURRS AND 1.000 EDGES



MARKING PROCESS: AS PER TMC SPECIFICATION S-727.  
 LETTERING: 1/8 HIGH BLACK GOTHIC, LOCATED AS SHOWN.

REAR VIEW of PANEL  
 Note: Panel is shown in a "Flattened" View to clearly show all Lettering.

ISSUE	ITEM	CHANGED FROM	DATE	EN. NO.	DRAFTS	CHECKER	ENG. APP.
TOLERANCES							
SCALE: DO NOT SCALE							
DRILL PUNCH COMMERCIAL STOCK SIZES AND MANUFACTURERS TOLERANCES ARE NOT INCLUDED							

1	GPT.10KRL	PROJECT NO.	8-16-67
REV.	DATE	BY	DATE

REQ. ITEM	PART NO.	F. BUDETTI	DESCRIPTION	SYMBOL
THE TECHNICAL MATERIEL CORP. MAMARONECK, NEW YORK				
MARKING FRONT PANEL, REAR MARKING METHOD: AS PER TMC SPEC. S777				
SHEET 2 OF 2				

LD2235