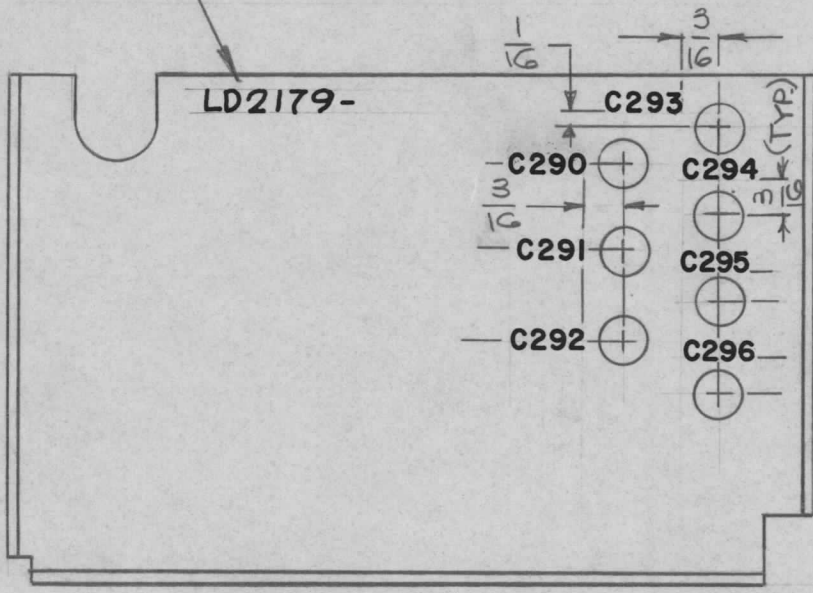


REQ. PER UNIT	USED ON			LD2179 \emptyset
	MODEL	ASS'Y. NO.	DATE	
1	GPR-92 B		10-12-66	

MARK TMC PT. NO. W/LATEST REV. LETTER



— UNLESS OTHERWISE SPECIFIED —
 MARKING PROCESS: AS PER TMC SPECIFICATION S-727.
 LETTERING: **3/32** HIGH BLACK GOTHIC, LOCATED AS SHOWN.

REF: MS 6002

REQ.	ITEM	PART NO.	DESCRIPTION				SYMBOL		
\emptyset		---	THE TECHNICAL MATERIEL CORP. MAMARONECK, NEW YORK						
X		---	MARKING - SHIELD, IFO						
SYM	DESCRIPTION	DATE	CH. NO.	DRAFTS	CHECKER	ENG. APP.			
UNLESS OTHERWISE SPECIFIED DIMENSIONS ARE IN INCHES AND INCLUDE CHEMICALLY APPLIED OR PLATED FINISHES		SCALE	1:1						
DECIMALS .X \pm .05 .XX \pm .01 .XXX \pm .005	TOLERANCES	FRACTIONS \pm 1/64 ANGLES \pm 0° 30'	CODE						
					TYPE & TEMPER	HEAT TREAT. SPEC.	DRAWN	CHECKED	FINAL APPROVAL
					---	---	H-Austin 10-12-66	<i>[Signature]</i>	<i>[Signature]</i>
					FINISH & SPEC. NO.	ELEC. DES. APP.	MECH. DES. APP.	LD2179 \emptyset	