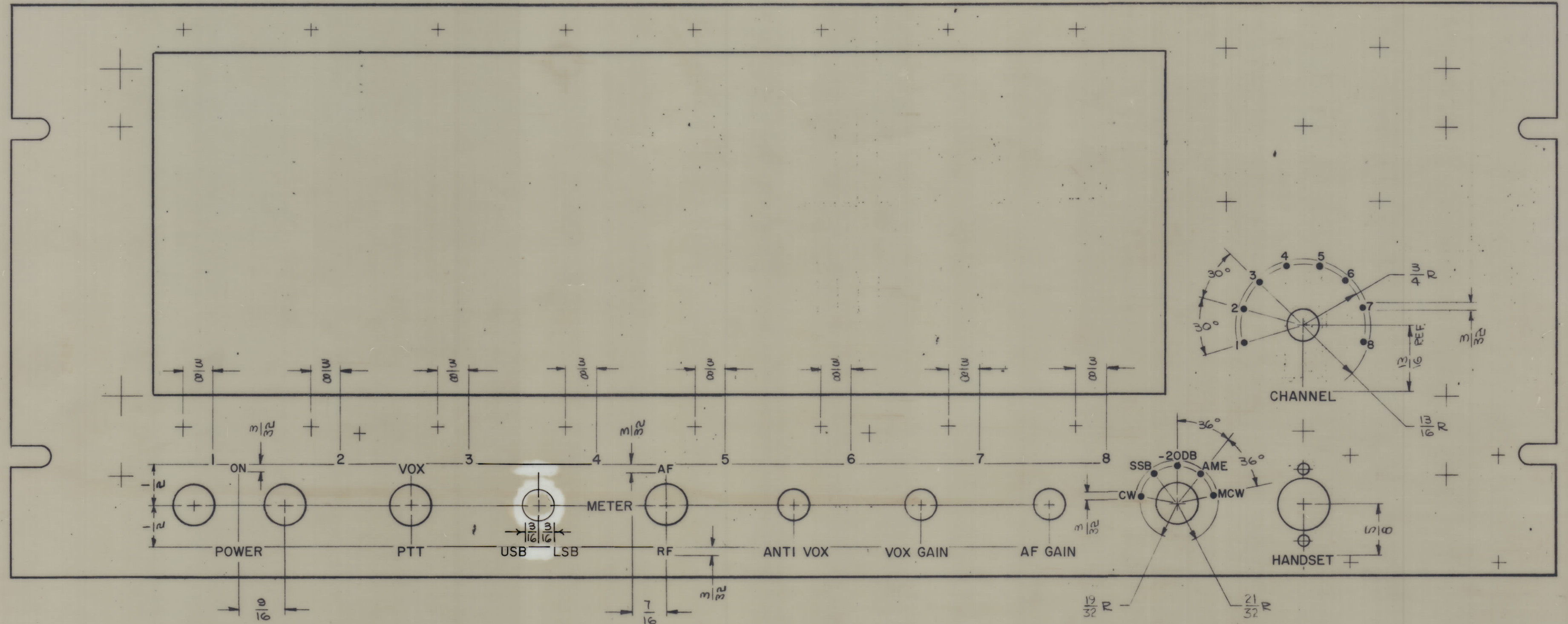


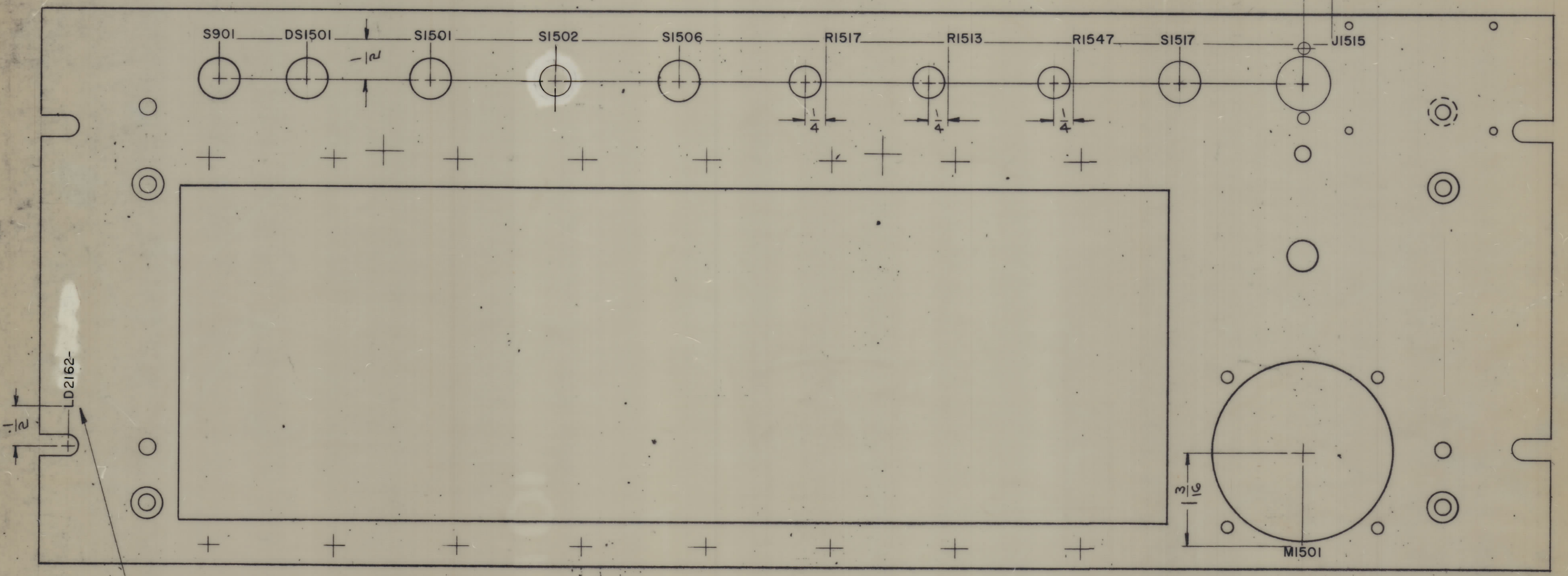
REVISIONS							
ZONE	SYM	DESCRIPTION	DATE	E.M.N. NO.	DRAFT	CHKD	APPD
#	X	EXPER. RELEASE	9/9/66	X	JCB		
	Ø	ORIGINAL RELEASE FOR PRODUCTION	9-19-64	Ø	RME		

FRONT VIEW
—TOP—



REVISIONS							
ZONE	SYM	DESCRIPTION	DATE	E.M.N. NO.	DRAFT	CHKD	APPD
#	X	EXPER. RELEASE	9/7/66	X	JCB		
#	Ø	ORIGINAL RELEASE FOR PRODUCTION	9-19-44	Ø	RME		

— REAR VIEW —



— TOP —

MARK TMC PART NO WITH LATEST REVISION LETTER

REF: MS5079 (4)

MARKING PROCESS: AS PER TMC SPECIFICATION S-727.
 LETTERING: 1/8 HIGH BLACK GOTHIC, LOCATED AS SHOWN.

NOTES

1	SMEA-1	
QTY./UNIT	MODEL USED ON	ASS'Y. NO.
SCALE 1:1	CODE A	
THE CONTENTS OF THIS DRAWING ARE THE EXCLUSIVE PROPERTY OF THE TECHNICAL MATERIEL CORP. ITS UNAUTHORIZED USE OR REPRODUCTION IN WHOLE OR IN PART IS STRICTLY FORBIDDEN.		

REQ'D.	ITEM	PART NUMBER	DESCRIPTION	SYMBOL
	T. AALTONEN		LIST OF MATERIAL	
MATERIAL		THE TECHNICAL MATERIEL CORP. MAMARONECK, NEW YORK		
FINISH		TITLE MARKING, PANEL, FRONT MARKING PROCESS: PER TMC SPEC 5727		
DRAWN	JCB	DATE	9-	FINAL APPROVAL
CHECKED	J. Phle	DATE	9/15/66	
ELECT. DES.		DATE		
MECH. DES.		DATE		
UNLESS OTHERWISE SPECIFIED DIMENSIONS ARE IN INCHES AND INCLUDE CHEMICALLY APPLIED OR PLATED FINISHES				
DECIMALS	TOLERANCES	FRACTIONS	ANGLES	
.X ± .01		± 1/64	± 0° 30'	
.XX ± .01				
.XXX ± .01				
DATE				LD2162
SHEET 2 OF 2				REV. LTR.

LD2162