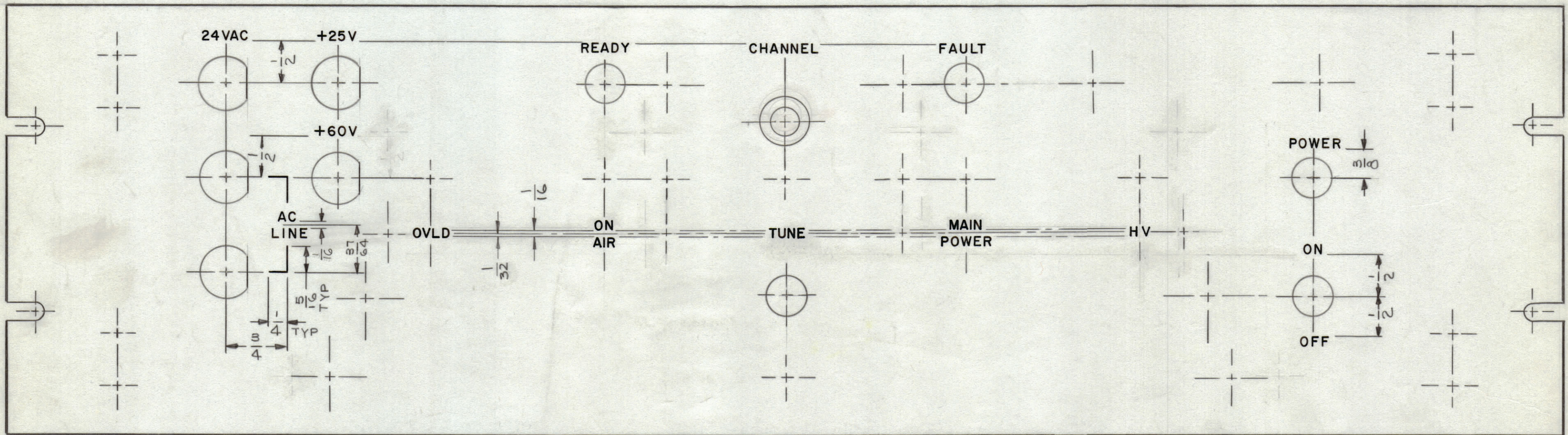


REVISIONS						
ZONE	SYM	DESCRIPTION	DATE	E.M.N. NO.	DRAFT	CHKD
	X1	"HV ADDED. ON AC LINE" 1/16 WAS 3/32	9.13.66	44	WTD	
	Ø	ORIGINAL RELEASE FOR PRODUCTION	10/6/66	Ø	CV	B.B.



HEIGHT OF LETTERS	DEPTH OF STROKE	WIDTH OF STROKE
1/8	.010	.020
LINES	.010	.015

- UNLESS OTHERWISE SPECIFIED -**
- 1- ENGRAVING PER TMC SPEC. 3566.
 - 2- ALL LETTER GROUPS TO BE CENTERED ON HOLES.
 - 3- ALL LETTERS & LINES TO BE WHITE FILLED.

REF. MS 5022

REQ'D.	ITEM	PART NUMBER	DESCRIPTION	SYMBOL
EATON LIST OF MATERIAL				
MATERIAL		THE TECHNICAL MATERIEL CORP. MAMARONECK, NEW YORK		
FINISH		TITLE MARKING - PANEL, FRONT		
UNLESS OTHERWISE SPECIFIED DIMENSIONS ARE IN INCHES AND INCLUDE CHEMICALLY APPLIED OR PLATED FINISHES		DRAWN J. LESHINSKI	DATE 7/26/66	FINAL APPROVAL <i>[Signature]</i>
		CHECKED <i>[Signature]</i>	DATE	DATE 10/5/66
		ELECT. DES.	DATE	REV. LTR.
		MECH. DES.	DATE	
		SHEET 1 OF 2		

QTY./UNIT	MODEL USED ON	ASS'Y. NO.
SCALE 1/1	CODE	
THE CONTENTS OF THIS DRAWING ARE THE EXCLUSIVE PROPERTY OF THE TECHNICAL MATERIEL CORP. ITS UNAUTHORIZED USE OR REPRODUCTION IN WHOLE OR IN PART IS STRICTLY FORBIDDEN.		

NOTES

LD2115 Ø