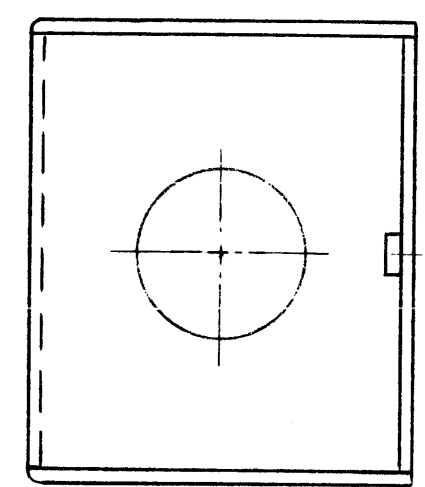
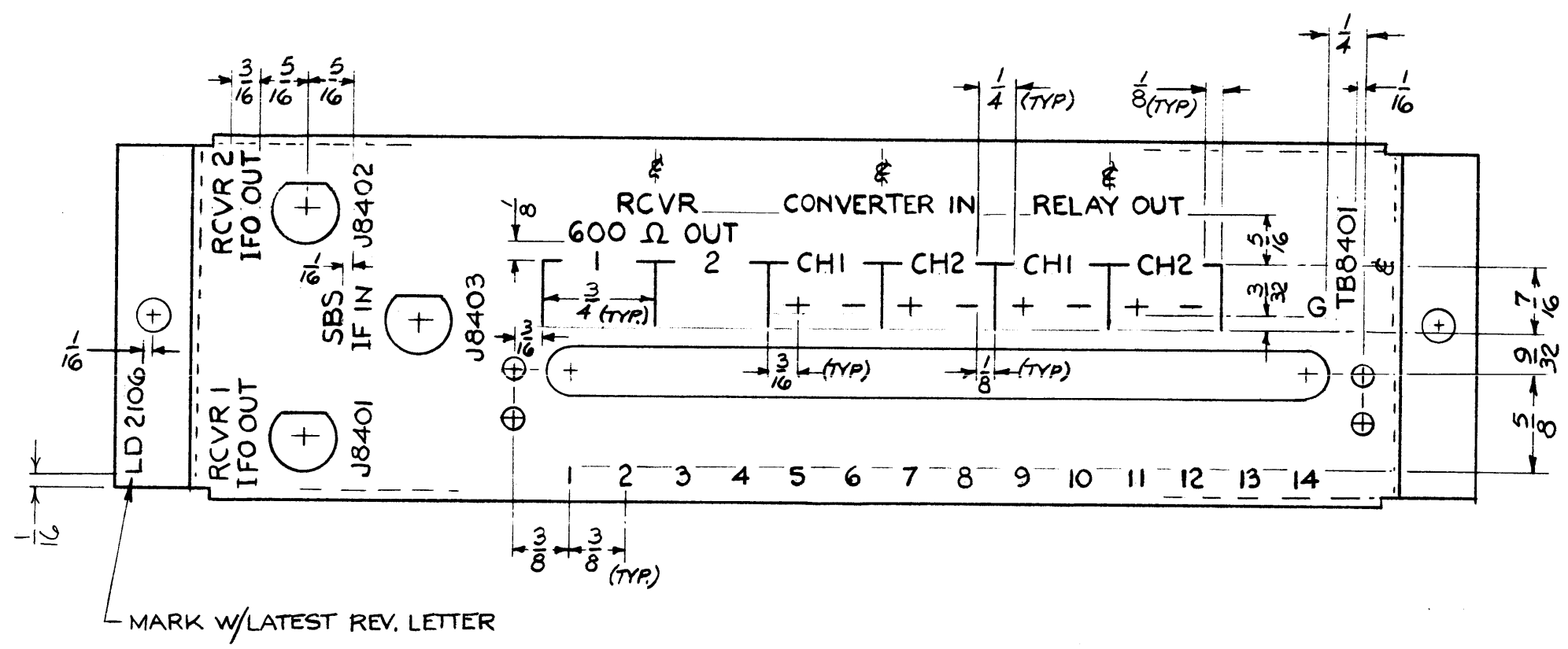


SYM	REVISIONS					
	DESCRIPTION	DATE	E.M.N. NO.	DRAFT	CHKD	APPD
Ø	ORIGINAL RELEASE FOR PRODUCTION	12/2/66	Ø	CV		

LD 2106



ALL LETTERING  $\frac{1}{8}$ " BLACK GOTHIC PER TMC SPEC 5727.

REF. MS 4968

REQ'D.	ITEM	PART NUMBER	DESCRIPTION	SYMBOL
STURMER LIST OF MATERIAL				
MATERIAL		THE TECHNICAL MATERIEL CORP. MAMARONECK, NEW YORK		
FINISH		TITLE MARKING CHASSIS, COMPONENT MOUNTING		
UNLESS OTHERWISE SPECIFIED DIMENSIONS ARE IN INCHES AND INCLUDE CHEMICALLY APPLIED OR PLATED FINISHES		DRAWN <i>RB</i>	DATE 6-29-66	FINAL APPROVAL <i>M. H. King</i>
DECIMALS .X ± .05 .XX ± .01 .XXX ± .005		CHECKED <i>RB</i>	DATE 4-29-66	DATE 12/1/66
FRACTIONS ± 1/64 ANGLES ± 0° 30'		ELECT. DES. <i>RB</i>	DATE 1-1-66	REV. LTR. Ø
TOLERANCES		MECH. DES. <i>RB</i>	DATE 1-1-66	SHEET

RAK 30D		
Q'TY./UNIT	MODEL USED ON	ASS'Y. NO.
SCALE	CODE	
THE CONTENTS OF THIS DRAWING ARE THE EXCLUSIVE PROPERTY OF THE TECHNICAL MATERIEL CORP. ITS UNAUTHORIZED USE OR REPRODUCTION IN WHOLE OR IN PART IS STRICTLY FORBIDDEN.		

NOTES