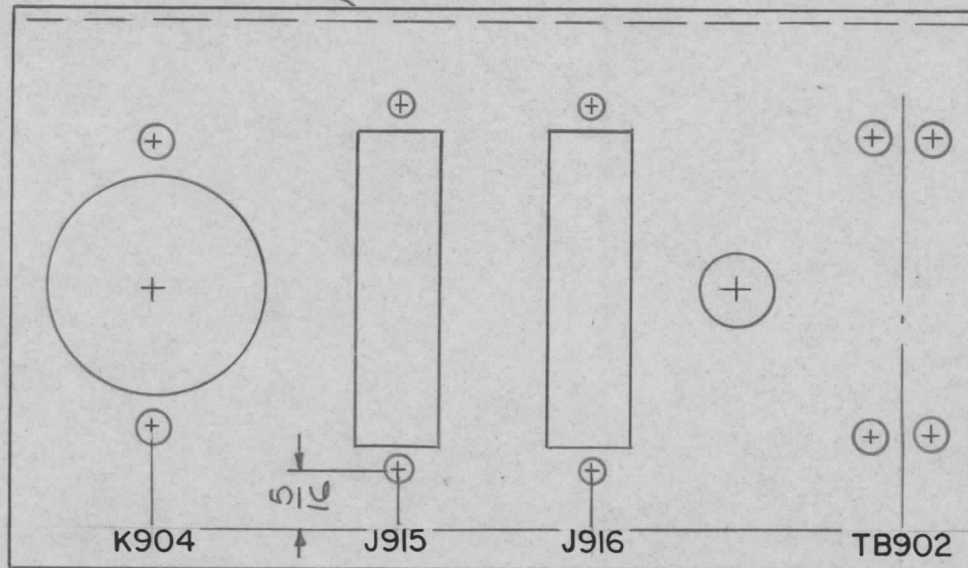


MARK TMC P/N (LD2003-)
 1/8 HIGH GOTHIC W/LATEST
 REV. LETTER.

REQ. PER UNIT	USED ON			LD2003	Ø
	MODEL	ASS'Y. NO.	DATE		
1	TST-10K		9-3-65		



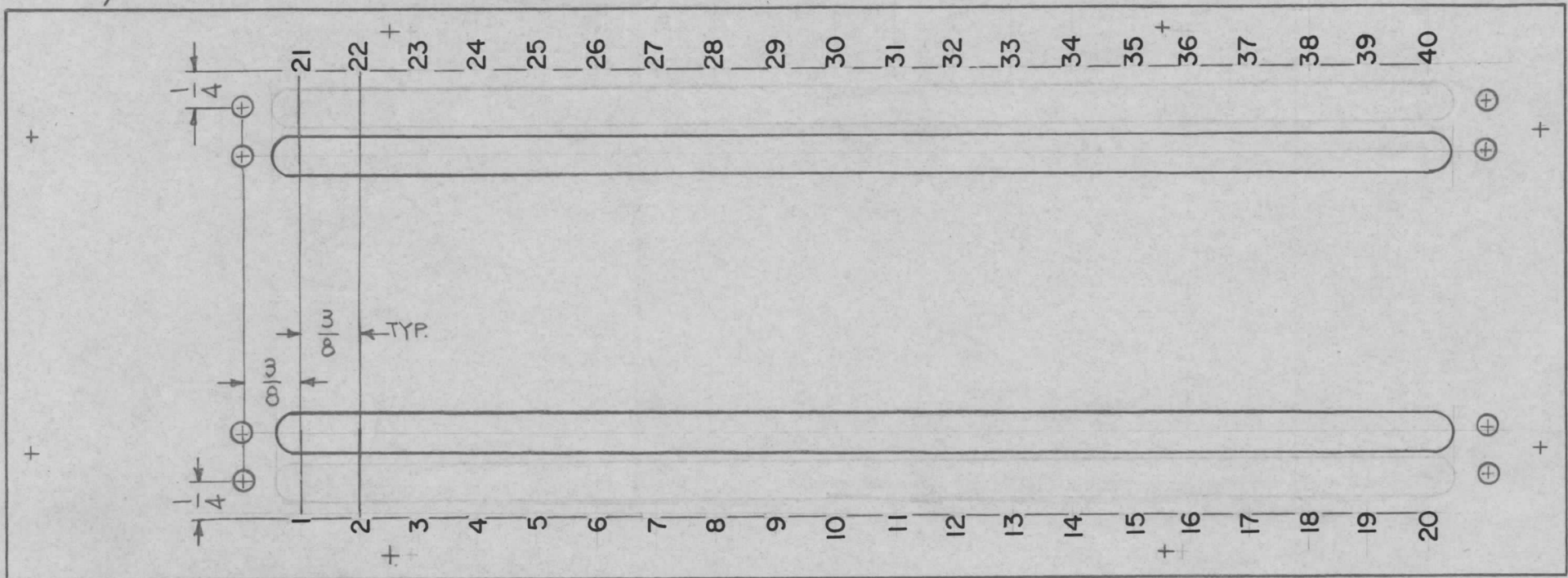
MARKING PROCESS: AS PER TMC SPECIFICATION S-727.
 LETTERING: 1/8 HIGH BLACK GOTHIC, LOCATED AS SHOWN.

REF: MS4706

							REQ. ITEM	PART NO.	F. BUDETTI	DESCRIPTION	SYMBOL	
Ø	ORIGINAL RELEASE	2/15/66							THE TECHNICAL MATERIEL CORP. MAMARONECK, NEW YORK			
XI	MS 4706 DELETED FROM TMC PART NO.	2-9-66	M	Jc					MARKING, BRACKET MTG. COMPONENTS			
SYM	DESCRIPTION	DATE	CH. NO.	DRAFTS	CHECKER	ENG. APP.			MARKING PROCESS: AS PER TMC SPEC S727			
UNLESS OTHERWISE SPECIFIED DIMENSIONS ARE IN INCHES AND INCLUDE CHEMICALLY APPLIED OR PLATED FINISHES		SCALE	1:1									
DECIMALS .X ± .05 .XX ± .01 .XXX ± .005	TOLERANCES	FRACTIONS ± 1/64 ANGLES ± 0° 30'	CODE A					TYPE & TEMPER	HEAT TREAT. SPEC.	DRAWN	CHECKED	FINAL APPROVAL
							FINISH & SPEC. NO.	ELEC. DES. APP.	MECH. DES. APP.	LD2003 Ø		

MARK TMC P/N LD2005-MS4775
 1/8 HIGH GOTHIC W/LATEST
 REV. LETTER. ON REAR

REQ. PER UNIT	USED ON			LD2005	Ø
	MODEL	ASS'Y. NO.	DATE		
1	TST-10K	A4369	10-11-65		



FRONT VIEW

MARKING PROCESS: AS PER TMC SPECIFICATION S-727.

LETTERING: 1/8 HIGH BLACK GOTHIC, LOCATED AS SHOWN.

REF. MS4775-

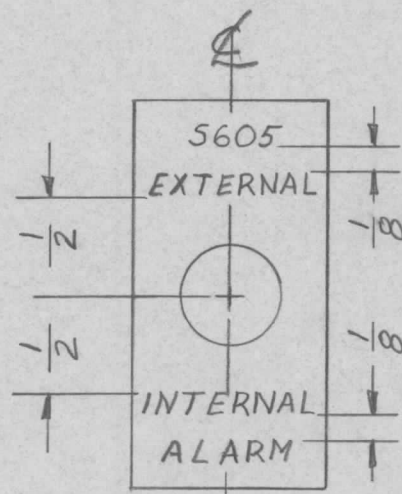
							REQ. ITEM	PART NO.	F. BUDETTI	DESCRIPTION	SYMBOL	
									THE TECHNICAL MATERIEL CORP. MAMARONECK, NEW YORK			
Ø	ORIGINAL RELEASE	2/15/66						STOCK SIZE	MARKING, COVER, BOX, CABLE JUNCTION			
XI	MS4775 DELETED FROM TMC PART NO.	2-9-66	—	Jc					MARKING PROCESS: AS PER TMC SPEC. S-727			
SYM	DESCRIPTION	DATE	CH. NO.	DRAFTS	CHECKER	ENG. APP.		MATERIAL				
UNLESS OTHERWISE SPECIFIED DIMENSIONS ARE IN INCHES AND INCLUDE CHEMICALLY APPLIED OR PLATED FINISHES						SCALE	1:1					
								TYPE & TEMPER	HEAT TREAT. SPEC.	DRAWN	CHECKED	FINAL APPROVAL
DECIMALS .X ± .05 .XX ± .01 .XXX ± .005						TOLERANCES		FRACTIONS ± 1/64 ANGLES ± 0° 30'		CODE	A	
								FINISH & SPEC. NO.		ELEC. DES. APP.	MECH. DES. APP.	LD2005 Ø

REQ. PER UNIT	USED ON			LD2019 \emptyset
	MODEL	ASS'Y. NO.	DATE	
1	CSS-3		11-17-65	

MARKING PROCESS: AS PER TMC SPECIFICATION S-727.
 LETTERING: 1/8 HIGH BLACK GOTHIC, LOCATED AS SHOWN.

NOTE:
 STAMP TMC PART NO. 1/8 HIGH GOTHIC ON REAR OF PANEL

WITH LATEST REVISION LETTERS

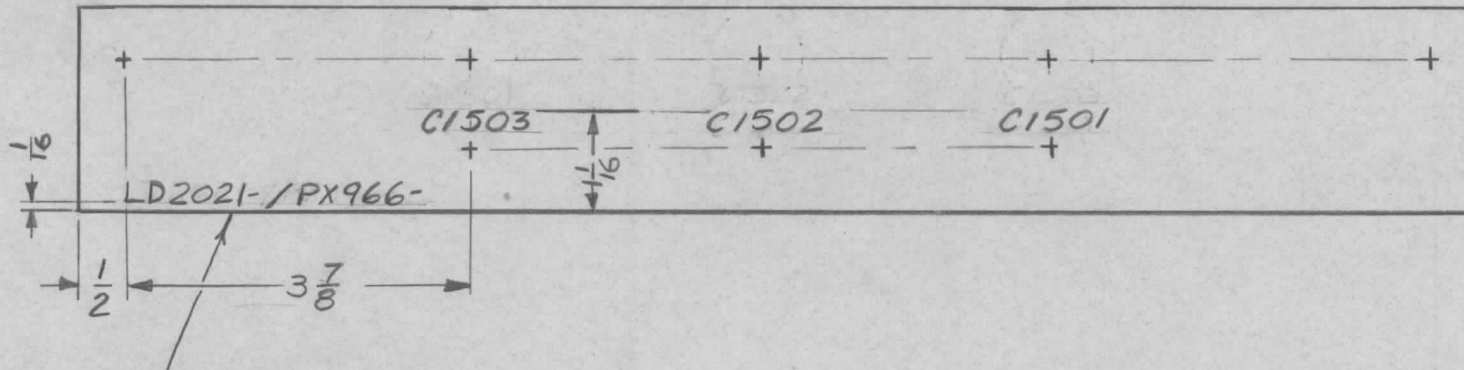


FRONT VIEW SHOWN

REF: M54807

REQ.	ITEM	PART NO.	DESCRIPTION				SYMBOL	
			THE TECHNICAL MATERIEL CORP. MAMARONECK, NEW YORK					
			MARKING, PLATE, ALARM SWITCH					
			MATERIAL					
			TYPE & TEMPER	HEAT TREAT. SPEC.	DRAWN	CHECKED	FINAL APPROVAL	
					BPM	JLW 11/17/65	11/17/65	
			FINISH & SPEC. NO.		ELEC. DES. APP.	MECH. DES. APP.	LD2019 \emptyset	
			UNLESS OTHERWISE SPECIFIED DIMENSIONS ARE IN INCHES AND INCLUDE CHEMICALLY APPLIED OR PLATED FINISHES					
			SCALE					
			DECIMALS .X \pm .05 .XX \pm .01 .XXX \pm .005	FRACTIONS \pm 1/64 ANGLES \pm 0° 30'	CODE			
			TOLERANCES					
			ORIGINAL RELEASE	DATE	CH. NO.	DRAFTS	CHECKER	ENG. APP.
				11/17/65				

REQ. PER UNIT	USED ON			LD2021	A
	MODEL	ASS'Y. NO.	DATE		
1	HVRC-2				



MARK TMC PT. NO
W/LATEST REVISION
LETTERS.

MARKING PROCESS: AS PER TMC SPECIFICATION S-727.
LETTERING: 1/8 HIGH BLACK GOTHIC, LOCATED AS SHOWN.

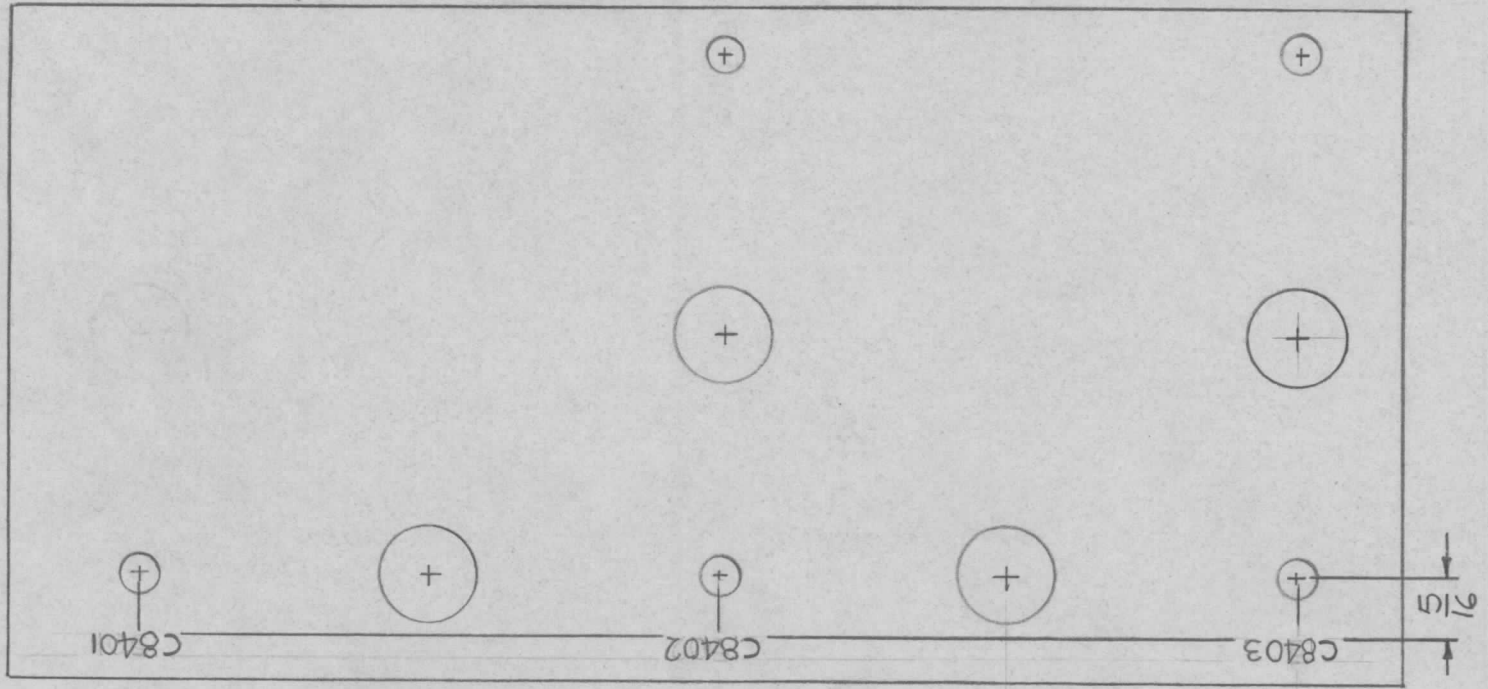
REF. PX966

REQ.	ITEM	PART NO.	BUDETTI	DESCRIPTION	SYMBOL	
				THE TECHNICAL MATERIEL CORP. MAMARONECK. NEW YORK		
A	CLERICAL CHANGE	12/1/65	CC.	X.V.V. JCB		
Ø	ORIGINAL RELEASE FOR PRODUCTION	11/9/65	Ø	X.V.V.		
SYM	DESCRIPTION	DATE	CH. NO.	DRAFTS	CHECKER	ENG. APP.
UNLESS OTHERWISE SPECIFIED DIMENSIONS ARE IN INCHES AND INCLUDE CHEMICALLY APPLIED OR PLATED FINISHES		SCALE DO NOT SCALE				
DECIMALS .X ± .05 .XX ± .01 .XXX ± .005	TOLERANCES	FRACTIONS ± 1/64 ANGLES ± 0° 30'	CODE			
				DAVID V. VENEZIAN 11-18-65	JCB	11/19/65
				TYPE & TEMPER	HEAT TREAT. SPEC.	DRAWN
						CHECKED
						FINAL APPROVAL
						LD2021
						A
				FINISH & SPEC. NO.	ELEC. DES. APP.	MECH. DES. APP.

MARK TMC P/N LD2025-~~PX967~~
 1/8 HIGH GOTHIC W/LATEST REV,
 LETTER (ON REAR)

REQ. PER UNIT	USED ON		
	MODEL	ASS'Y. NO.	DATE
1	HVRB-2		11-22-65

LD2025 \emptyset



MARKING PROCESS: AS PER TMC SPECIFICATION S-727.
LETTERING: 1/8 HIGH BLACK GOTHIC, LOCATED AS SHOWN.

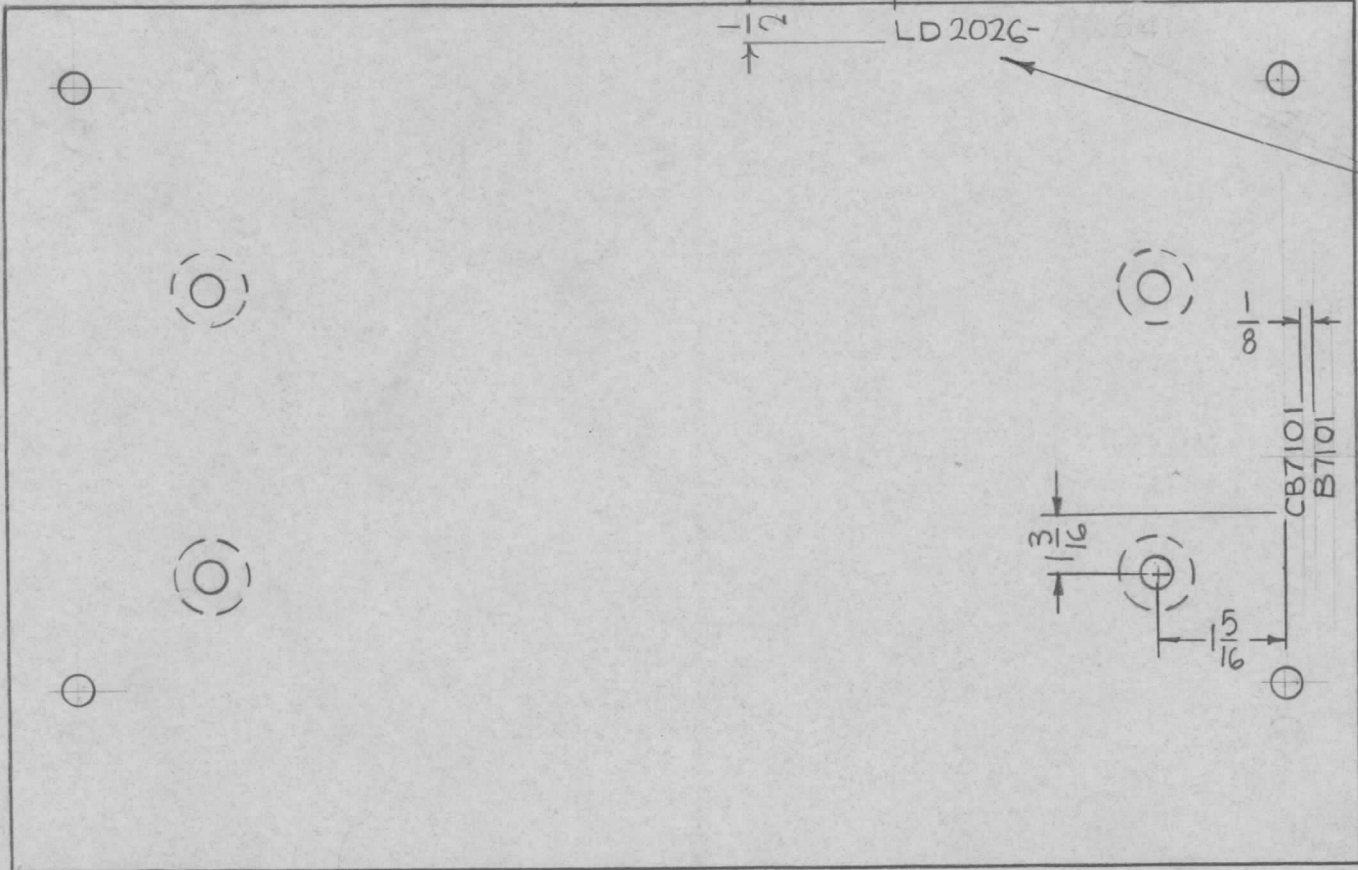
REF. PX967

REQ.	ITEM	PART NO.	F. BUDETTI DESCRIPTION				SYMBOL	
\emptyset	ORIGINAL RELEASE FOR PRODUCTION	6/14/66	\emptyset	CV.	HO	THE TECHNICAL MATERIEL CORP. MAMARONECK. NEW YORK		
XI	SYMBOLS WERE 1500 SERIES	12-7-65	XI	MR	DA	MARKING, BOARD MTG. CAPACITORS		
SYM	DESCRIPTION	DATE	CH. NO.	DRAFTS	CHECKER	ENG. APP.	MARKING PROCESS: AS PER TMC SPEC. S-727	
UNLESS OTHERWISE SPECIFIED DIMENSIONS ARE IN INCHES AND INCLUDE CHEMICALLY APPLIED OR PLATED FINISHES			SCALE					
			1:1					
DECIMALS	TOLERANCES	FRACTIONS	CODE	TYPE & TEMPER				
.X \pm .05		\pm 1/64	A	HEAT TREAT. SPEC.				
.XX \pm .01		ANGLES		DRAWN				
.XXX \pm .005		\pm 0° 30'		CHECKED				
				FINISH & SPEC. NO.		ELEC. DES. APP.	MECH. DES. APP.	
						6-14-66	LD2025 \emptyset	

MARKING PROCESS: AS PER TMC SPECIFICATION S-727.

LETTERING: 1/8 HIGH BLACK GOTHIC, LOCATED AS SHOWN.

REQ. PER UNIT	USED ON		LD2026	Ø
	MODEL	ASS'Y. NO.		
1	GPT-40K		11-23-65	

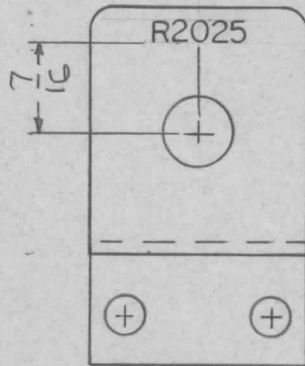


REF: PX 541

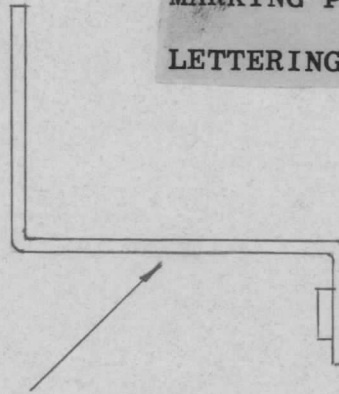
REQ.	ITEM	PART NO.	F. BUDETTI DESCRIPTION			SYMBOL
			THE TECHNICAL MATERIEL CORP. MAMARONECK, NEW YORK			
			MARKING, BOARD, MAIN BREAKER MTG.			
			MARKING PROCESS: AS PER TMC SPEC. S-727			
0	ORIGINAL RELEASE FOR PRODUCTION	3-1-67	L.A.K.			
X1	DELETE PX541 FROM TMC PT. NO	2/27/67	Jc	JL	RB	
SYM	DESCRIPTION	DATE	CH. NO.	DRAFTS	CHECKER	ENG. APP.
UNLESS OTHERWISE SPECIFIED DIMENSIONS ARE IN INCHES AND INCLUDE CHEMICALLY APPLIED OR PLATED FINISHES		SCALE	1:2			
DECIMALS .X ± .05 .XX ± .01 .XXX ± .005	TOLERANCES	FRACTIONS ± 1/64 ANGLES ± 0° 30'	CODE	A		
				TYPE & TEMPER	HEAT TREAT. SPEC.	FINISH & SPEC. NO.
				DRAWN	CHECKED	FINAL APPROVAL
				ELEC. DES. APP.	MECH. DES. APP.	LD2026 Ø

M/L

REQ. PER UNIT	USED ON			LD 2027	Ø
	MODEL	ASS'Y. NO.	DATE		
1	VLLA-1		12-3-65		



MARKING PROCESS: AS PER TMC SPECIFICATION S-727.
 LETTERING: 1/8 HIGH BLACK GOTHIC, LOCATED AS SHOWN.

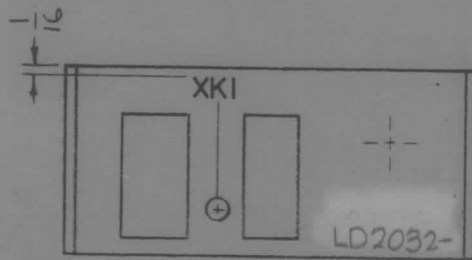


MARK TMC P/N (LD2027- /MS4829-
 1/8 HIGH GOTHIC W/LATEST
 REV. LETTERS.

REF: MS 4829

REQ.	ITEM	PART NO.	F. BUDETTI	DESCRIPTION	SYMBOL			
				THE TECHNICAL MATERIEL CORP. MAMARONECK. NEW YORK				
				MARKING, BRACKET MTG. POT				
				MARKING PROCESS: AS PER TMC SPEC S727				
Ø	ORIGINAL RELEASE	12/8/65						
SYM	DESCRIPTION	DATE	CH. NO.	DRAFTS	CHECKER	ENG. APP.		
UNLESS OTHERWISE SPECIFIED DIMENSIONS ARE IN INCHES AND INCLUDE CHEMICALLY APPLIED OR PLATED FINISHES		SCALE	1:1					
DECIMALS .X ± .05 .XX ± .01 .XXX ± .005	TOLERANCES	FRACTIONS ± 1/64 ANGLES ± 0° 30'	CODE A					
				TYPE & TEMPER	HEAT TREAT. SPEC.	DRAWN	CHECKED	FINAL APPROVAL
				FINISH & SPEC. NO.	ELEC. DES. APP.	MECH. DES. APP.	LD 2027	Ø

REQ. PER UNIT	USED ON			LD2032	Ø
	MODEL	ASS'Y. NO.	DATE		
1	KIT-270	AX 619	10 DEC 65		

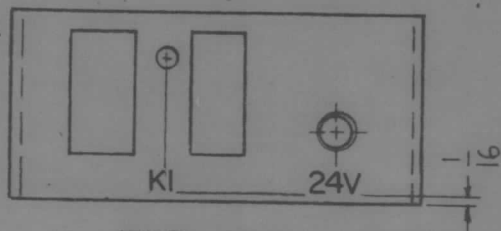


BOTTOM VIEW

MARKING PROCESS: AS PER TMC SPECIFICATION S-727.

LETTERING: 1/8 HIGH BLACK GOTHIC, LOCATED AS SHOWN.

STAMP TMC PART NO.
1/8 HIGH GOTHIC W/LATEST
REV. LETTER;



TOP VIEW

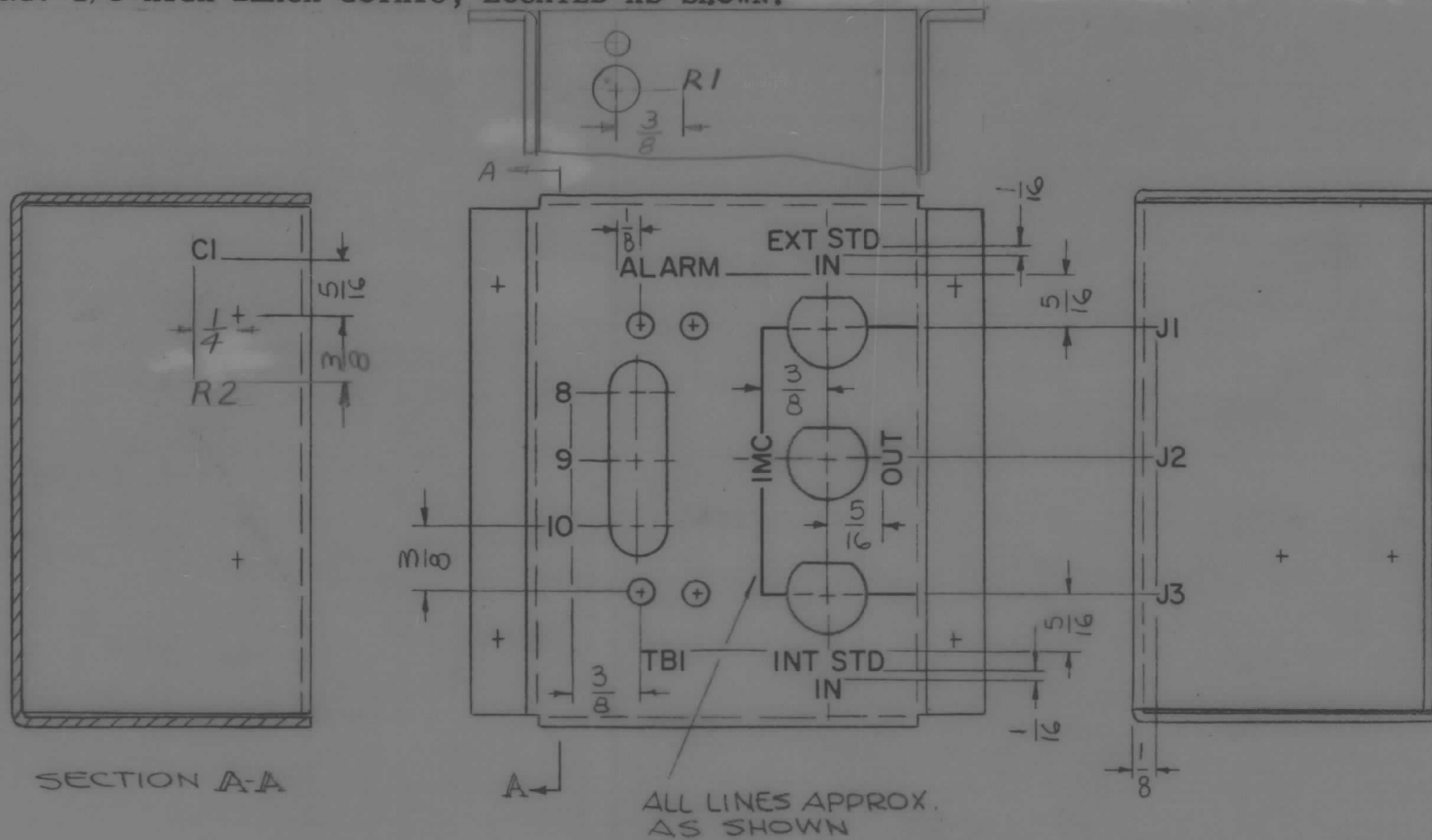
REF: MS4832

REQ.	ITEM	PART NO.	BUDETTI	DESCRIPTION	SYMBOL
				THE TECHNICAL MATERIEL CORP. MAMARONECK. NEW YORK	
				MARKING, BRACKET, MTG RELAY	
				MARKING PROCESS: AS PER TMC SPEC S-727	
				UNLESS OTHERWISE SPECIFIED DIMENSIONS ARE IN INCHES AND INCLUDE CHEMICALLY APPLIED OR PLATED FINISHES	
				SCALE 1:1	
				DECIMALS .X ± .05 .XX ± .01 .XXX ± .005	
				FRACTIONS ± 1/64 ANGLES ± 0° 30'	
				TOLERANCES	
				CODE A	
				TYPE & TEMPER	
				HEAT TREAT. SPEC.	
				FINISH & SPEC. NO.	
				ELEC. DES. APP.	
				Mech. DES. APP.	
				LD2032	Ø

MARKING PROCESS: AS PER TMC SPECIFICATION S-727.

LETTERING: 1/8 HIGH BLACK GOTHIC, LOCATED AS SHOWN.

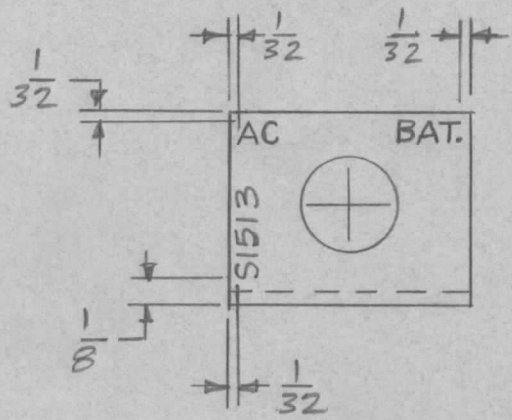
REQ. PER UNIT 1	USED ON			LD2035 ϕ
	MODEL KIT-270	ASS'Y. NO. AX619	DATE 13 DEC 65	



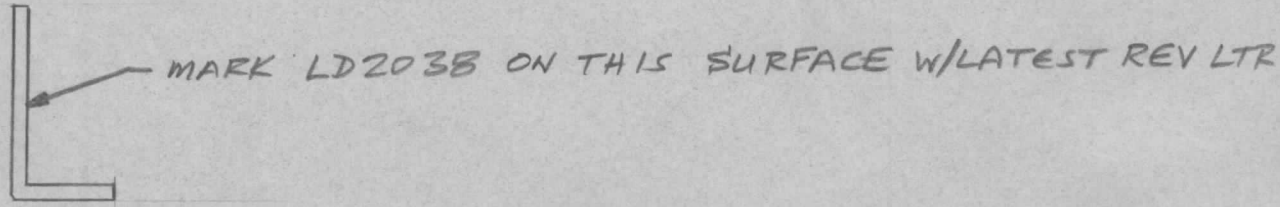
REF: MS4835

SYM	DESCRIPTION	DATE	CH. NO.	DRAFTS	CHECKER	ENG. APP.	REQ. ITEM	PART NO.	BUDETTI	DESCRIPTION	SYMBOL	
ϕ	ORIGINAL RELEASE FOR PRODUCTION	12/14/65			Jc					THE TECHNICAL MATERIEL CORP. MAMARONECK, NEW YORK		
										MARKING, CHASSIS MAIN		
										MARKING PROCESS: AS PER TMC SPEC. S727		
	UNLESS OTHERWISE SPECIFIED DIMENSIONS ARE IN INCHES AND INCLUDE CHEMICALLY APPLIED OR PLATED FINISHES	SCALE	1:1									
	DECIMALS .X \pm .05 .XX \pm .01 .XXX \pm .005	FRACTIONS \pm 1/64 ANGLES \pm 0° 30'	CODE	A								
										BCM	JCS	MMHaug 12/14/65
										DRAWN	CHECKED	FINAL APPROVAL
												LD2035 ϕ
										ELÉC. DES. APP.	MECH. DES. APP.	

REQ. PER UNIT	USED ON			LD 2038 \emptyset
	MODEL	ASS'Y. NO.	DATE	
1	STR-2C		2-25-66	



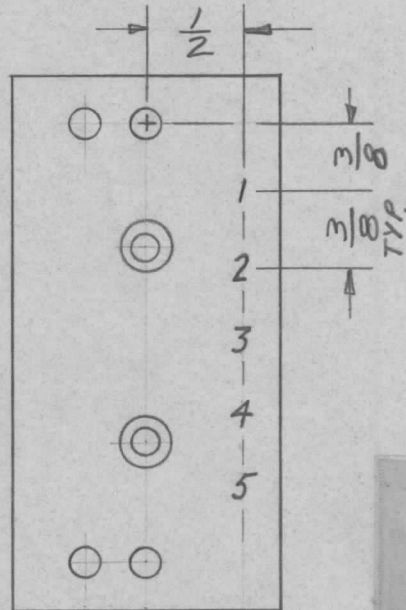
ALL LETTERING $\frac{1}{8}$ HIGH BLK GOTHIC.



REF: MS4838

REQ.	ITEM	PART NO.	DESCRIPTION				SYMBOL
			THE TECHNICAL MATERIEL CORP. MAMARONECK, NEW YORK				
			MARKING, BRKT, MTG, SW				
\emptyset	ORIGINAL RELEASE FOR PRODUCTION	3-1-66	AA	Jc	JCS	Jde	
SYM	DESCRIPTION	DATE	CH. NO.	DRAFTS	CHECKER	ENG. APP.	
UNLESS OTHERWISE SPECIFIED DIMENSIONS ARE IN INCHES AND INCLUDE CHEMICALLY APPLIED OR PLATED FINISHES		SCALE					
DECIMALS .X \pm .05 .XX \pm .01 .XXX \pm .005	TOLERANCES	FRACTIONS \pm 1/64 ANGLES \pm 0° 30'	CODE				
FINISH & SPEC. NO.		ELEC. DES. APP.	MECH. DES. APP.	LD 2038 \emptyset			

REQ. PER UNIT	USED ON			LD2039 \emptyset
	MODEL	ASS'Y. NO.	DATE	
1	KIT 180		13 JAN 66	



MARKING PROCESS: AS PER TMC SPECIFICATION S-727.

LETTERING: 1/8 HIGH BLACK GOTHIC, LOCATED AS SHOWN.

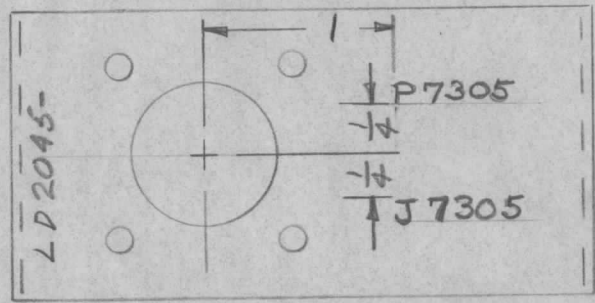
REF: PX 968

REQ.	ITEM	PART NO.	DESCRIPTION				SYMBOL
			THE TECHNICAL MATERIEL CORP. MAMARONECK. NEW YORK				
			STOCK SIZE				
			MARKING INSULATOR				
			MATERIAL				
					<i>BM</i>	<i>JD 2/2/66</i>	<i>RAH</i>
			TYPE & TEMPER	HEAT TREAT. SPEC.	DRAWN	CHECKED	FINAL APPROVAL
						<i>RJP</i>	LD2039 \emptyset
			FINISH & SPEC. NO.		ELEC. DES. APP.	MECH. DES. APP.	

UNLESS OTHERWISE SPECIFIED DIMENSIONS ARE IN INCHES AND INCLUDE CHEMICALLY APPLIED OR PLATED FINISHES		SCALE	
DECIMALS .X ± .05 .XX ± .01 .XXX ± .005	TOLERANCES	FRACTIONS ± 1/64 ANGLES ± 0° 30'	CODE

REQ. PER UNIT	USED ON			LD2045	Ø
	MODEL	ASS'Y. NO.	DATE		
1	KIT 180		13 JAN 66		

MARK W/TMC PIN
W/LATEST REVISION
LETTER.



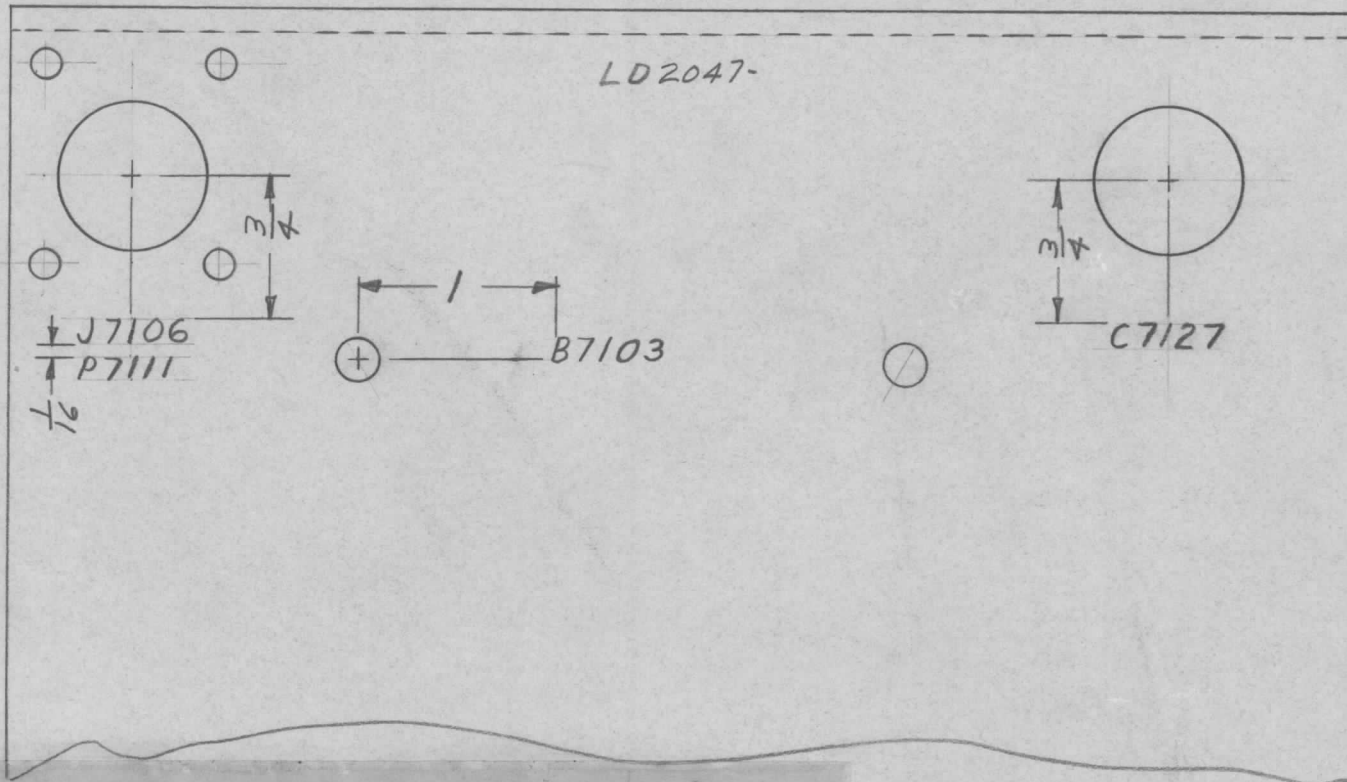
MARKING PROCESS: AS PER TMC SPECIFICATION S-727.
LETTERING: 1/8 HIGH BLACK GOTHIC, LOCATED AS SHOWN.

REF: MS 4852

REQ.	ITEM	PART NO.	DESCRIPTION				SYMBOL
			THE TECHNICAL MATERIEL CORP. MAMARONECK. NEW YORK				
			MARKING, PA FILTER, CONN. BRKT.				
Ø	ORIGINAL RELEASE	2/2/66					
ISSUE	ITEM	CHANGED FROM	DATE	CH. NO.	DRAFTS	CHECKER	ENG. APP.
TOLERANCES			SCALE:				
DEC. DIM. ±			MAXIMUM ALLOWABLE TOLERANCES HAVE BEEN DETERMINED AND ANY DEVIATIONS WILL BE CAUSE FOR REJECTION.				
FRAC. DIM. ±			REMOVE ALL BURRS AND SHARP EDGES				
ANGULAR DIM. ±							
TYPE & TEMPER		HEAT TREAT. SPEC.	DRAWN	CHECKED	FINAL APPROVAL		
FINISH & SPEC. NO.		ELEC. DES. APP.	MECH. DES. APP.		LD2045 Ø		

REQ. PER UNIT	USED ON			LD2047	Ø
	MODEL	ASS'Y. NO.	DATE		
1	KIT 180		17 JAN 66		

MARK W/TMC PIN W/LATEST REVISION LETTER.



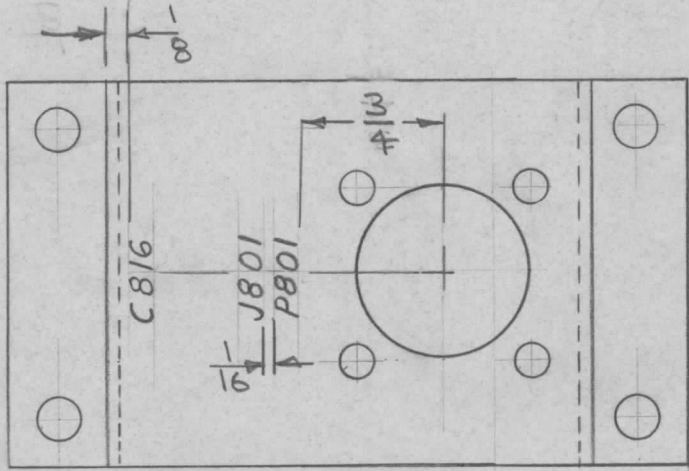
MARKING PROCESS: AS PER TMC SPECIFICATION S-727.

LETTERING: 1/8 HIGH BLACK GOTHIC, LOCATED AS SHOWN.

REF: MS 4864

REQ. ITEM	PART NO.	DESCRIPTION	SYMBOL
		THE TECHNICAL MATERIEL CORP. MAMARONECK, NEW YORK	
		STOCK SIZE	
Ø		ORIGINAL RELEASE	2/2/66
		MARKING, BLOWER BRACKET	
		MATERIAL	
		TYPE & TEMPER	
		HEAT TREAT. SPEC.	
		DRAWN	
		CHECKED	
		FINISH & SPEC. NO.	
		ELEC. DES. APP.	
		MECH. DES. APP.	
			LD2047 Ø

REQ. PER UNIT	USED ON			LD2048 ϕ
	MODEL	ASS'Y. NO.	DATE	
1	KIT 180		12 JAN 66	



EXTERNAL VIEW

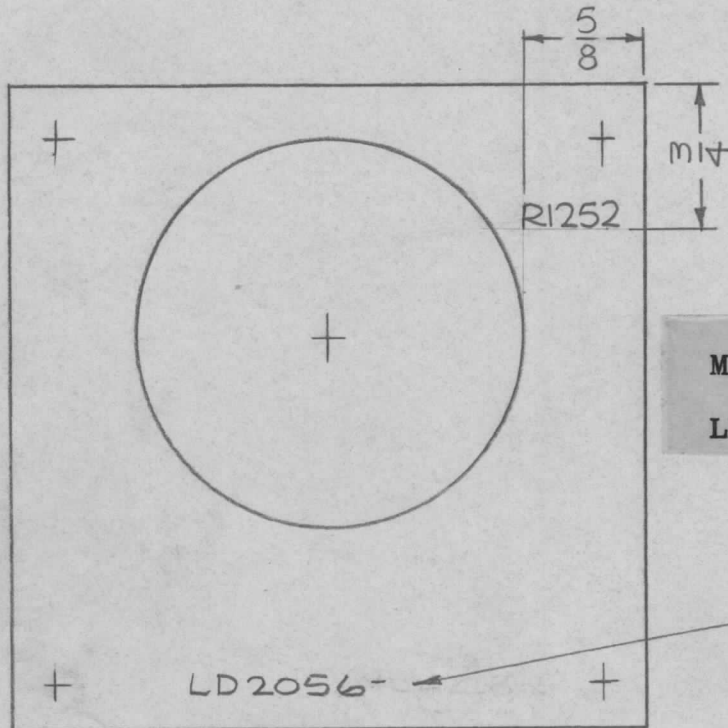
MARKING PROCESS: AS PER TMC SPECIFICATION S-727.
 LETTERING: 1/8 HIGH BLACK GOTHIC, LOCATED AS SHOWN.

REF: MS 1611

REQ.	ITEM	PART NO.	DESCRIPTION				SYMBOL
			THE TECHNICAL MATERIEL CORP. MAMARONECK. NEW YORK				
			STOCK SIZE				
			LETTERING, MAIN BLOWER CAPACITOR BRACKET				
			MATERIAL				
			TYPE & TEMPER	HEAT TREAT. SPEC.	DRAWN	CHECKED	FINAL APPROVAL
					OVN	HDe 2/2/66	Ally
			FINISH & SPEC. NO.		ELEC. DES. APP.	MECH. DES. APP.	LD2048 ϕ
						RJP	

UNLESS OTHERWISE SPECIFIED DIMENSIONS ARE IN INCHES AND INCLUDE CHEMICALLY APPLIED OR PLATED FINISHES	SCALE	DATE	CH. NO.	DRAFTS	CHECKER	ENG. APP.
		2/2/66				HDe
DECIMALS .X \pm .05 .XX \pm .01 .XXX \pm .005	FRACTIONS \pm 1/64 ANGLES \pm 0° 30'	TOLERANCES	CODE			

REQ. PER UNIT	USED ON			LD2056 Ø
	MODEL	ASS'Y. NO.	DATE	
1	GPT-10KLF		2-17-66	



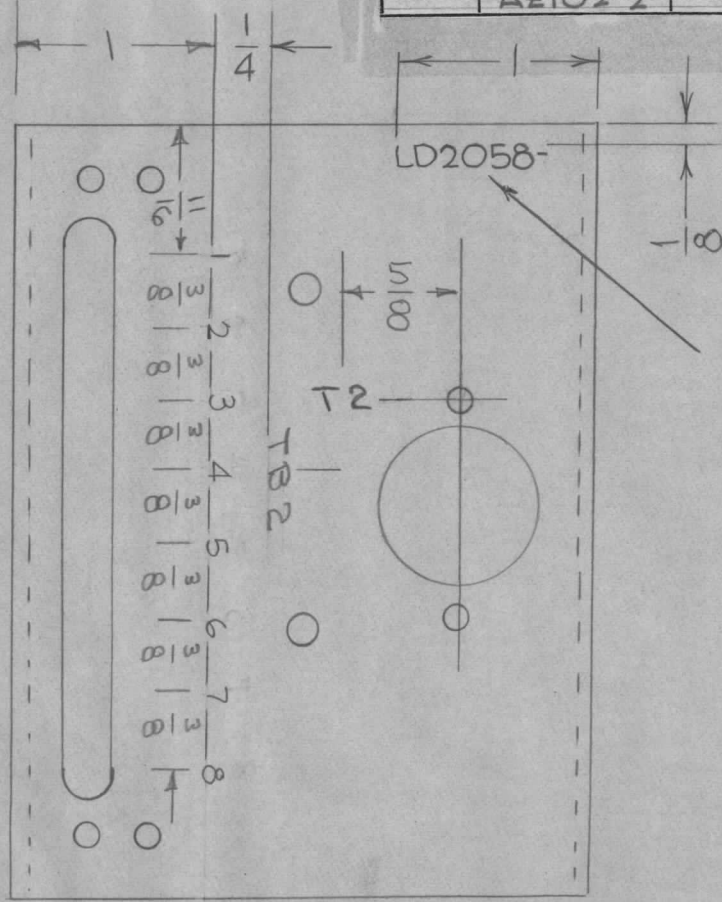
MARKING PROCESS: AS PER TMC SPECIFICATION S-727.
 LETTERING: 1/8 HIGH BLACK GOTHIC, LOCATED AS SHOWN.

MARK TMC P/N
 1/8 HIGH GOTHIC
 W/LATEST REV.
 LETTER.

REF: MS4228-2

REQ.	ITEM	PART NO.	F. BUDETTI DESCRIPTION			SYMBOL
			THE TECHNICAL MATERIEL CORP. MAMARONECK, NEW YORK			
			MARKING, PLATE PICK UP LOOP SWR COUPLER			
			MARKING PROCESS: AS PER TMC SPEC-5727			
Ø	ORIGINAL RELEASE FOR PRODUCTION	2-18-66	AM	Jc	Ha	
SYM	DESCRIPTION	DATE	CH. NO.	DRAFTS	CHECKER	ENG. APP.
UNLESS OTHERWISE SPECIFIED DIMENSIONS ARE IN INCHES AND INCLUDE CHEMICALLY APPLIED OR PLATED FINISHES		SCALE 1:1				
DECIMALS .X ± .05 .XX ± .01 .XXX ± .005		TOLERANCES		FRACTIONS ± 1/64 ANGLES ± 0° 30'		CODE A
FINISH & SPEC. NO.		ELEC. DES. APP.		MECH. DES. APP.		LD2056 Ø

REQ. PER UNIT	USED ON			LD2058 Ø
	MODEL	ASS'Y. NO.	DATE	
	AZ102-2		2-23-66	



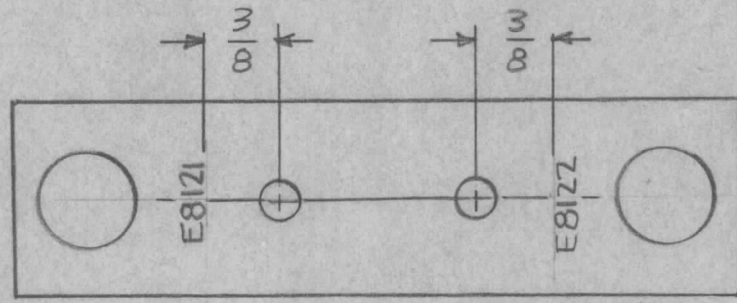
MARKING PROCESS: AS PER TMC SPECIFICATION S-727.

LETTERING: 1/8 HIGH BLACK GOTHIC, LOCATED AS SHOWN.

REF-TMC DWG MS4884

							REQ. ITEM	PART NO.	N. CARTER	DESCRIPTION	SYMBOL	
									THE TECHNICAL MATERIEL CORP. MAMARONECK, NEW YORK			
									MARKING, XFMR CHASSIS			
Ø	ORIGINAL RELEASE FOR PRODUCTION	2-23-66										
SYM	DESCRIPTION	DATE	CH. NO.	DRAFTS	CHECKER	ENG. APP.	MATERIAL					
UNLESS OTHERWISE SPECIFIED DIMENSIONS ARE IN INCHES AND INCLUDE CHEMICALLY APPLIED OR PLATED FINISHES						SCALE	TYPE & TEMPER HEAT TREAT. SPEC. DRAWN CHECKED FINAL APPROVAL					
DECIMALS .X ± .05 .XX ± .01 .XXX ± .005	TOLERANCES	FRACTIONS ± 1/64 ANGLES ± 0° 30'	CODE	FINISH & SPEC. NO.					ELEC. DES. APP.	MECH. DES. APP.	LD2058	Ø

REQ. PER UNIT	USED ON			LD2060 Ø
	MODEL	ASS'Y. NO.	DATE	
1	40K BASIC	A441	3-9-66	
1	KIT-285	A441		



MARKING $\frac{1}{80}$ HIGH GOTHIC BLACK.

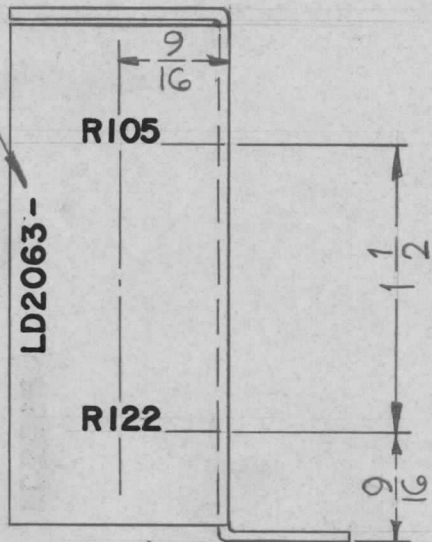
MARK TMC P/N LD2060 - $\frac{1}{8}$ HIGH GOTHIC W/LATEST REV. LETTER.

REF: PX 978

							REQ. ITEM	PART NO.	F. BUDETTI	DESCRIPTION	SYMBOL
									THE TECHNICAL MATERIEL CORP. MAMARONECK, NEW YORK		
								STOCK SIZE	MARKING, BLOCK, MTG. ELECT CONTACT		
								MATERIAL	AS PER TMC SPEC S-727		
Ø	ORIGINAL RELEASE FOR PRODUCTION	12/2/66	Ø	CV		file					
SYM	DESCRIPTION	DATE	CH. NO.	DRAFTS	CHECKER	ENG. APP.					
UNLESS OTHERWISE SPECIFIED DIMENSIONS ARE IN INCHES AND INCLUDE CHEMICALLY APPLIED OR PLATED FINISHES						SCALE					
						1:1					
DECIMALS	TOLERANCES		FRACTIONS	CODE							
.X ± .05			± 1/64								
.XX ± .01			ANGLES								
.XXX ± .005			± 0° 30'								
							TYPE & TEMPER	HEAT TREAT. SPEC.	DRAWN	CHECKED	FINAL APPROVAL
							FINISH & SPEC. NO.	ELEC. DES. APP.	MECH. DES. APP.	LD2060 Ø	

REQ. PER UNIT	USED ON			LD2063 ∅
	MODEL	ASS'Y. NO.	DATE	
1	PSP.3E0B	A4445	3-15-66	

MARK TMC PT. NO.
W/LATEST REV. LETTER

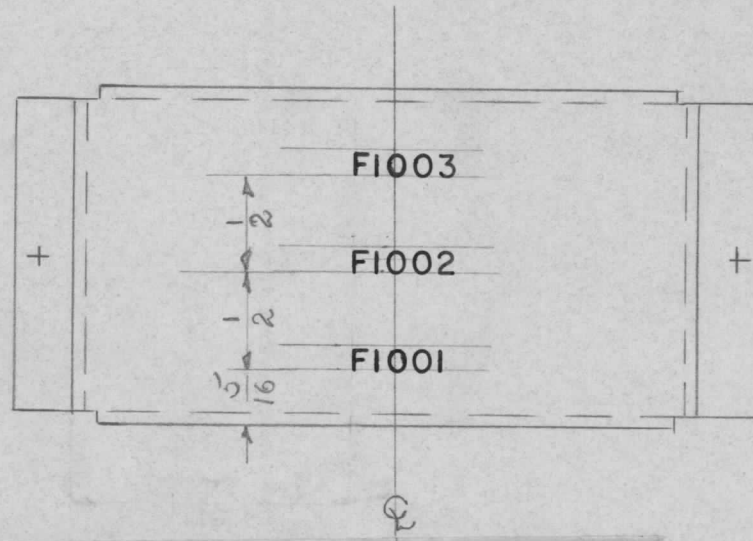


MARKING PROCESS: AS PER TMC SPECIFICATION S-727.
LETTERING: 1/8 HIGH BLACK GOTHIC, LOCATED AS SHOWN.

REF: MS4895-1

REQ.	ITEM	PART NO.	DESCRIPTION				SYMBOL
			THE TECHNICAL MATERIEL CORP. MAMARONECK, NEW YORK				
			MARKING-BRACKET MTG., RESISTOR				
			MATERIAL				
			TYPE & TEMPER				
			HEAT TREAT. SPEC.				
			DRAWN				
			CHECKED				
			FINAL APPROVAL				
			FINISH & SPEC. NO.				
			ELEC. DES. APP.				
			MECH. DES. APP.				
							LD2063 ∅

REQ. PER UNIT	USED ON			LD-2065 \emptyset
	MODEL	ASS'Y. NO.	DATE	
1	TPSG-1		3-15-66	

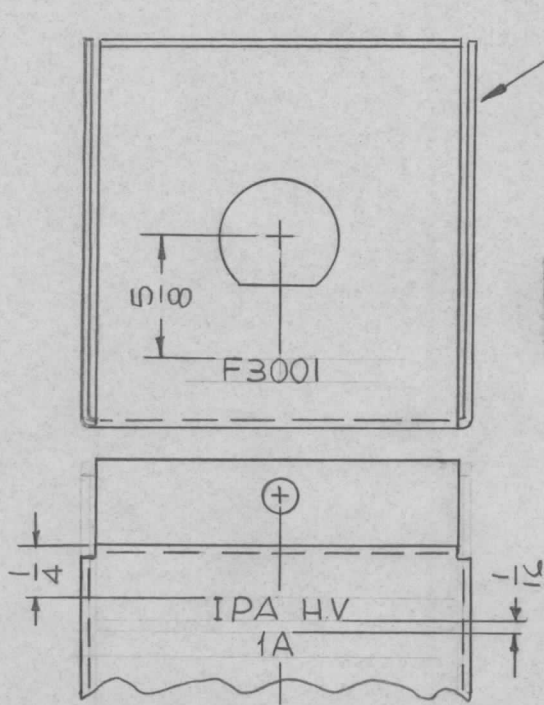


MARKING PROCESS: AS PER TMC SPECIFICATION S-727.
 LETTERING: 1/8 HIGH BLACK GOTHIC, LOCATED AS SHOWN.

REF: MS-4899

						REQ. ITEM	PART NO.	DESCRIPTION	SYMBOL		
						STOCK SIZE		THE TECHNICAL MATERIEL CORP. MAMARONECK, NEW YORK			
ORIGINAL RELEASE FOR PRODUCTION								MARKING COVER, FUSE			
SYM	DESCRIPTION	DATE	CH. NO.	DRAFTS	CHECKER	ENG. APP.	MATERIAL				
UNLESS OTHERWISE SPECIFIED DIMENSIONS ARE IN INCHES AND INCLUDE CHEMICALLY APPLIED OR PLATED FINISHES						SCALE					
DECIMALS .X \pm .05 .XX \pm .01 .XXX \pm .005		FRACTIONS \pm 1/64 ANGLES \pm 0° 30'		CODE							
TOLERANCES						TYPE & TEMPER		HEAT TREAT. SPEC.	DRAWN	CHECKED	FINAL APPROVAL
						FINISH & SPEC. NO.		ELEC. DES. APP.	MECH. DES. APP.	LD-2065 \emptyset	

REQ. PER UNIT	USED ON			LD2066	B
	MODEL	ASS'Y. NO.	DATE		
1	GPT-10KLF	AX534	3-24-66		



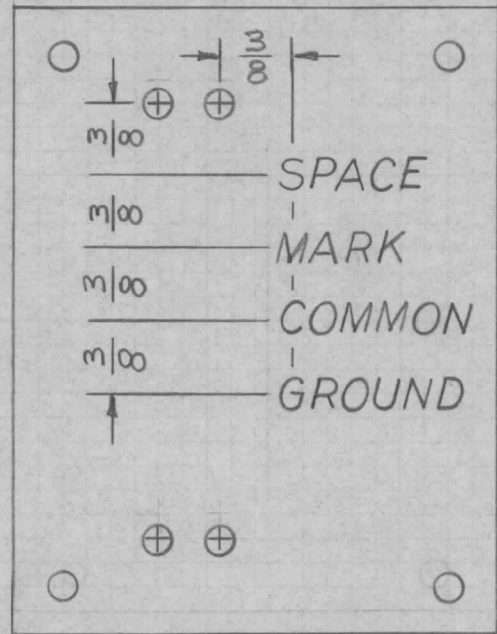
MARK TMC P/N LD2066 -
1/8 HIGH GOTHIC W/LATEST
REV. LETTER.

MARKING PROCESS: AS PER TMC SPECIFICATION S-727.
LETTERING: 1/8 HIGH BLACK GOTHIC, LOCATED AS SHOWN.

REF: MS 4900

							REQ. ITEM	PART NO.	F. BUDETTI	DESCRIPTION	SYMBOL	
B	REF. MS 4900 ADDED	11/30/67	CC	Emp	1/10	JHE			THE TECHNICAL MATERIEL CORP. MAMARONECK, NEW YORK			
A	CHGD ASSY. NO. FR. AX531 TO-534	8-18-66	CC	RME	gcb	gcb		STOCK SIZE	MARKING, BOX, MTG. FUSE			
Ø	ORIGINAL RELEASE FOR PRODUCTION	3-31-66	Ø	wfw				MATERIAL	MARKING PROCESS: AS PER TMC SPEC. S-727			
SYM	DESCRIPTION	DATE	CH. NO.	DRAFTS	CHECKER	ENG. APP.						
UNLESS OTHERWISE SPECIFIED DIMENSIONS ARE IN INCHES AND INCLUDE CHEMICALLY APPLIED OR PLATED FINISHES		SCALE 1:1										
DECIMALS .X ± .05 .XX ± .01 .XXX ± .005	TOLERANCES	FRACTIONS ± 1/64 ANGLES ± 0° 30'	CODE A				TYPE & TEMPER	HEAT TREAT. SPEC.	DRAWN aa	CHECKED RST	FINAL APPROVAL LD2066 B	
							FINISH & SPEC. NO.	ELEC. DES. APP.	MECH. DES. APP.			

REQ. PER UNIT	USED ON			LD2067 Ø
	MODEL	ASS'Y. NO.	DATE	
	PTCA-1	RAK-77-2	11-18-65	



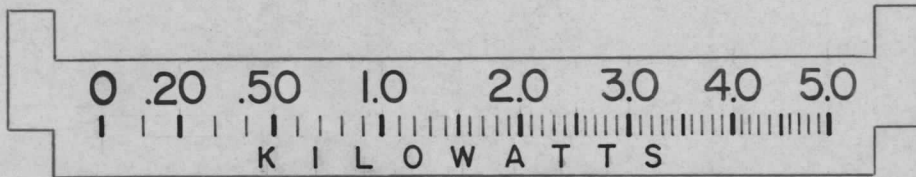
MARKING PROCESS PER TMC SPEC. 5727.
 LETTERING-5/32" BLACK GOTHIC

REF: MS 4902

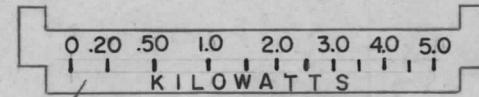
							REQ. ITEM	PART NO.	STURMER DESCRIPTION	LDPE10667-1	SYMBOL	
									THE TECHNICAL MATERIEL CORP. MAMARONECK, NEW YORK			
								STOCK SIZE				
Ø	ORIGINAL RELEASE	4/6/66	Ø	HCA								
SYM	DESCRIPTION	DATE	CH. NO.	DRAFTS	CHECKER	ENG. APP.	MATERIAL					
UNLESS OTHERWISE SPECIFIED DIMENSIONS ARE IN INCHES AND INCLUDE CHEMICALLY APPLIED OR PLATED FINISHES		SCALE							M. STURMER 11-18-65	JCS	11/18/65	
							TYPE & TEMPER	HEAT TREAT. SPEC.	DRAWN	CHECKED	FINAL APPROVAL	
DECIMALS .X ± .05 .XX ± .01 .XXX ± .005	TOLERANCES	FRACTIONS ± 1/64 ANGLES ± 0° 30'	CODE						FINISH & SPEC. NO.	ELEC. DES. APP.	MECH. DES. APP.	LD2067 Ø

REQ. PER UNIT	USED ON			LD2068 Ø
	MODEL	ASS'Y. NO.	DATE	
1	TCGB-1	AX628	3-31-66	

- LETTERING, CALIBRATION MARKS & NUMERALS TO BE IN BLACK
- BACKGROUND WHITE.



SCALE=2:1



SCALE=1:1

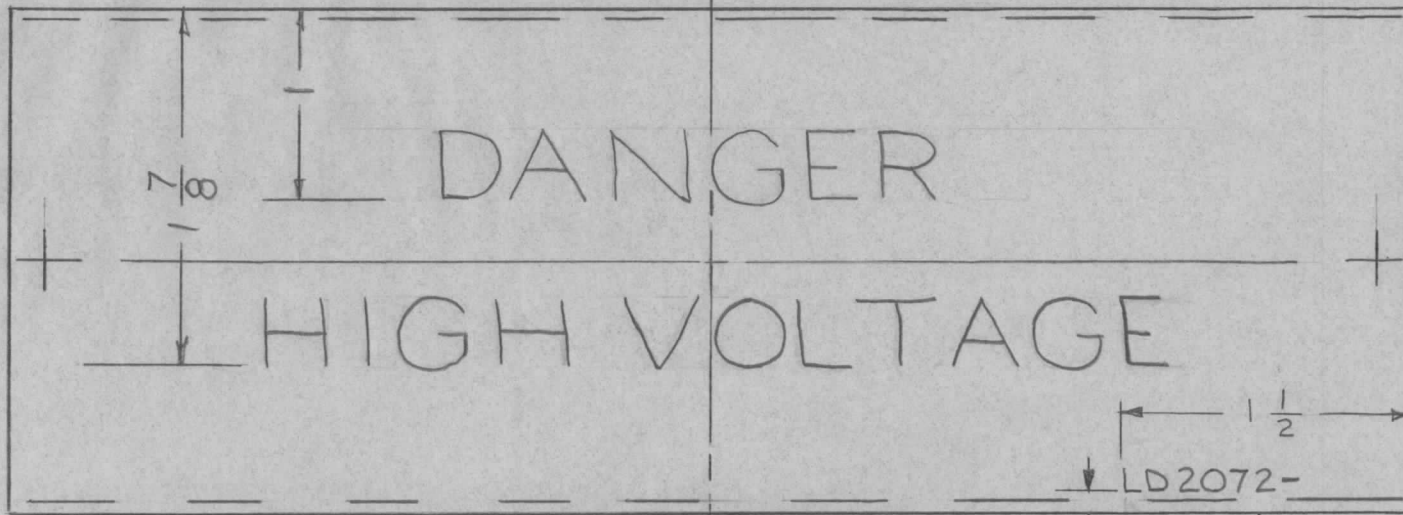
MINOR CALIBRATION MARKS LEFT OUT FOR CLARITY.

MARK TMC P/N LD2068 $\frac{1}{8}$ HIGH GOTHIC W/LATEST REV. LETTER. (ON REAR)

REF: MR 191
REF: MR 195

REQ.	ITEM	PART NO.	EATON	DESCRIPTION	SYMBOL		
				THE TECHNICAL MATERIEL CORP. MAMARONECK. NEW YORK			
				MARKING, DIAL			
Ø	ORIG. REL. FOR PROD.	9-16-68	Ø	R.G.	<i>Handwritten initials</i>		
SYM	DESCRIPTION	DATE	CH. NO.	DRAFTS	CHECKER	ENG. APP.	
UNLESS OTHERWISE SPECIFIED DIMENSIONS ARE IN INCHES AND INCLUDE CHEMICALLY APPLIED OR PLATED FINISHES		SCALE					
DECIMALS .X ± .05 .XX ± .01 .XXX ± .005	TOLERANCES	FRACTIONS ± 1/64 ANGLES ± 0° 30'	CODE C				
			TYPE & TEMPER	HEAT TREAT. SPEC.	DRAWN	CHECKED	FINAL APPROVAL
			FINISH & SPEC. NO.	ELEC. DES. APP.	MECH. DES. APP.	LD2068 Ø	

REQ. PER UNIT	USED ON			LD2072 \emptyset
	MODEL	ASS'Y. NO.	DATE	
1	KMCU-1		4-7-66	



MARKING PROCESS: AS PER TMC SPECIFICATION S-727.

LETTERING: 3/8 HIGH RED GOTHIC, LOCATED AS SHOWN.

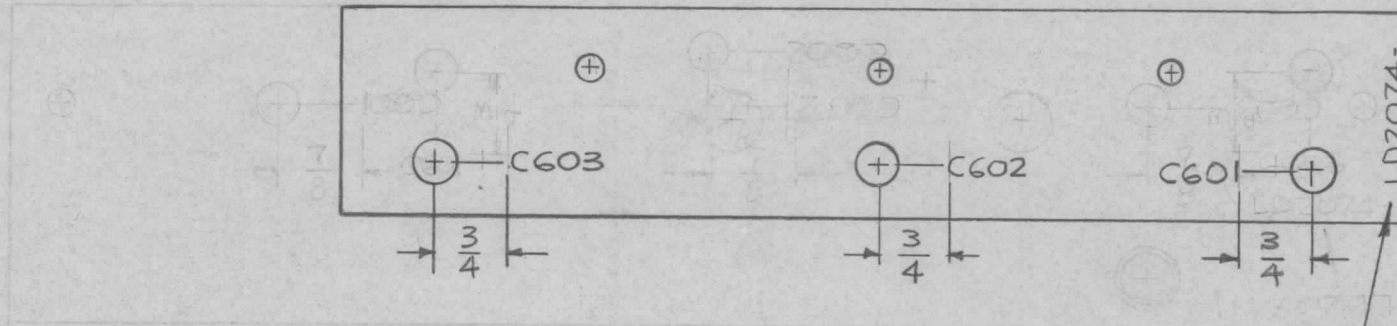
MARK TMC PART NO
1/8 HIGH RED GOTHIC
W/LATEST REV.
LETTER.

REF: MS4911

							REQ. ITEM	PART NO.	DESCRIPTION	SYMBOL				
									THE TECHNICAL MATERIEL CORP. MAMARONECK. NEW YORK					
							STOCK SIZE		MARKING, COVER, TERM. STRIP					
							MATERIAL							
ISSUE	ITEM	CHANGED FROM	DATE	CH. NO.	DRAFTS	CHECKER	ENG. APP.							
\emptyset		ORIGINAL RELEASE FOR PRODUCTION	2-2-67	4	WFO									
X		EXP. RELEASE	1-26-67	X	RME									
TOLERANCES			SCALE: 1:1											
DEC. DIM. \pm			MAXIMUM ALLOWABLE TOLERANCES HAVE BEEN DETERMINED AND ANY DEVIATIONS WILL BE CAUSE FOR REJECTION.				TYPE & TEMPER		HEAT TREAT. SPEC.		DRAWN	CHECKED	FINAL APPROVAL	
FRAC. DIM. \pm							REMOVE ALL BURRS AND SHARP EDGES		FINISH & SPEC. NO.		ELEC. DES. APP.		MECH. DES. APP.	
ANGULAR DIM. \pm														

REQ. PER UNIT	USED ON			LD 2074	Ø
	MODEL	ASS'Y. NO.	DATE		
1	KIT-257		5-2-66		

MARKING PROCESS:
AS PER TMC SPEC
S-727. LETTERING
TO BE $\frac{1}{8}$ HIGH BLACK
GOTHIC.



MARK TMC P/N
 $\frac{1}{8}$ HIGH GOTHIC
W/LATEST REV.
LETTER.

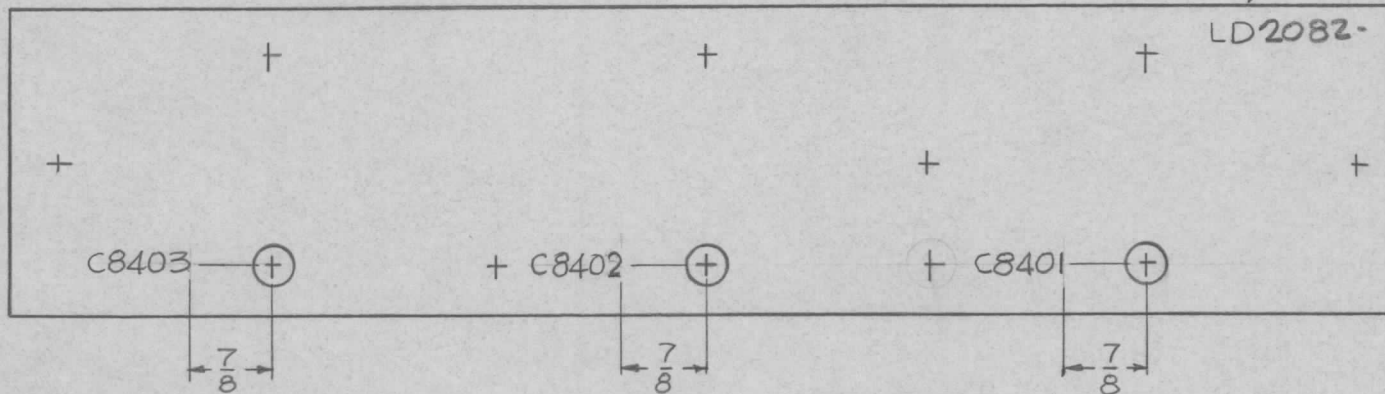
REF: PX986-

REQ.	ITEM	PART NO.	F. BUDETTI DESCRIPTION				SYMBOL
			THE TECHNICAL MATERIEL CORP. MAMARONECK, NEW YORK				
			MARKING, BOARD MTG. CAPACITORS				
			AS PER TMC SPEC: S-727				
Ø			DATE	CH. NO.	DRAFTS	CHECKER	ENG. APP.
			7.11.66		WHW		
UNLESS OTHERWISE SPECIFIED DIMENSIONS ARE IN INCHES AND INCLUDE CHEMICALLY APPLIED OR PLATED FINISHES			SCALE				
			1/2				
DECIMALS	TOLERANCES		FRACTIONS	CODE			
.X ± .05			± 1/64	A			
.XX ± .01			ANGLES				
.XXX ± .005			± 0° 30'				
TYPE & TEMPER		HEAT TREAT. SPEC.	DRAWN	CHECKED	FINAL APPROVAL		
			QA 7-11-66		LD 2074 Ø		
FINISH & SPEC. NO.		ELEC. DES. APP.	MECH. DES. APP.				

MARKING PROCESS:
 AS PER TMC SPEC S-727
 LETTERING TO BE $\frac{1}{8}$ HIGH
 BLACK GOTHIC.

REQ. PER UNIT	USED ON			LD2082	Ø
	MODEL	ASS'Y. NO.	DATE		
1	KIT-258		4-29-66		

MARK TMC P/N
 $\frac{1}{8}$ HIGH GOTHIC
 W/LATEST REV.
 LETTER.



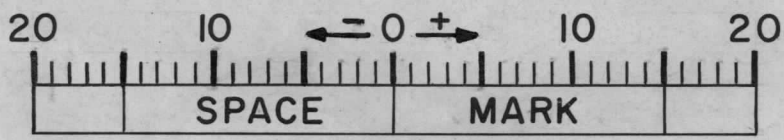
REF: PX.987-1

							REQ. ITEM	PART NO.	F. BUDETTI DESCRIPTION	SYMBOL	
									THE TECHNICAL MATERIEL CORP. MAMARONECK, NEW YORK		
								STOCK SIZE	MARKING BOARD MTG. CAPACITORS		
Ø	ORIGINAL RELEASE FOR PRODUCTION	7.11.66	At	WHD				MATERIAL	AS PER TMC SPEC. S-727		
SYM	DESCRIPTION	DATE	CH. NO.	DRAFTS	CHECKER	ENG. APP.			SRG	QCS	
UNLESS OTHERWISE SPECIFIED DIMENSIONS ARE IN INCHES AND INCLUDE CHEMICALLY APPLIED OR PLATED FINISHES						SCALE	1/2" : 1				
							TYPE & TEMPER	HEAT TREAT. SPEC.	DRAWN	CHECKED	FINAL APPROVAL
DECIMALS		FRACTIONS	CODE								
.X ± .05	TOLERANCES	± 1/64	A								
.XX ± .01		ANGLES									
.XXX ± .005		± 0° 30'									
								FINISH & SPEC. NO.	ELEC. DES. APP.	MECH. DES. APP.	LD2082
											Ø

W. W. R.

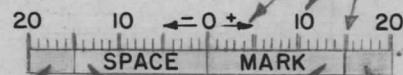
REQ. PER UNIT	USED ON			LD2085 ϕ
	MODEL	ASS'Y. NO.	DATE	
1	CFA-2	A5522	5-6-66	

NOTE: REDUCE ARTWORK 2 TO 1 AS INDICATED



SCALE-2:1

CALIBRATION MARKS, NUMERALS AND LETTERS, BLACK, GOTHIC



RED BACKGROUND GREEN BACKGROUND RED BACKGROUND

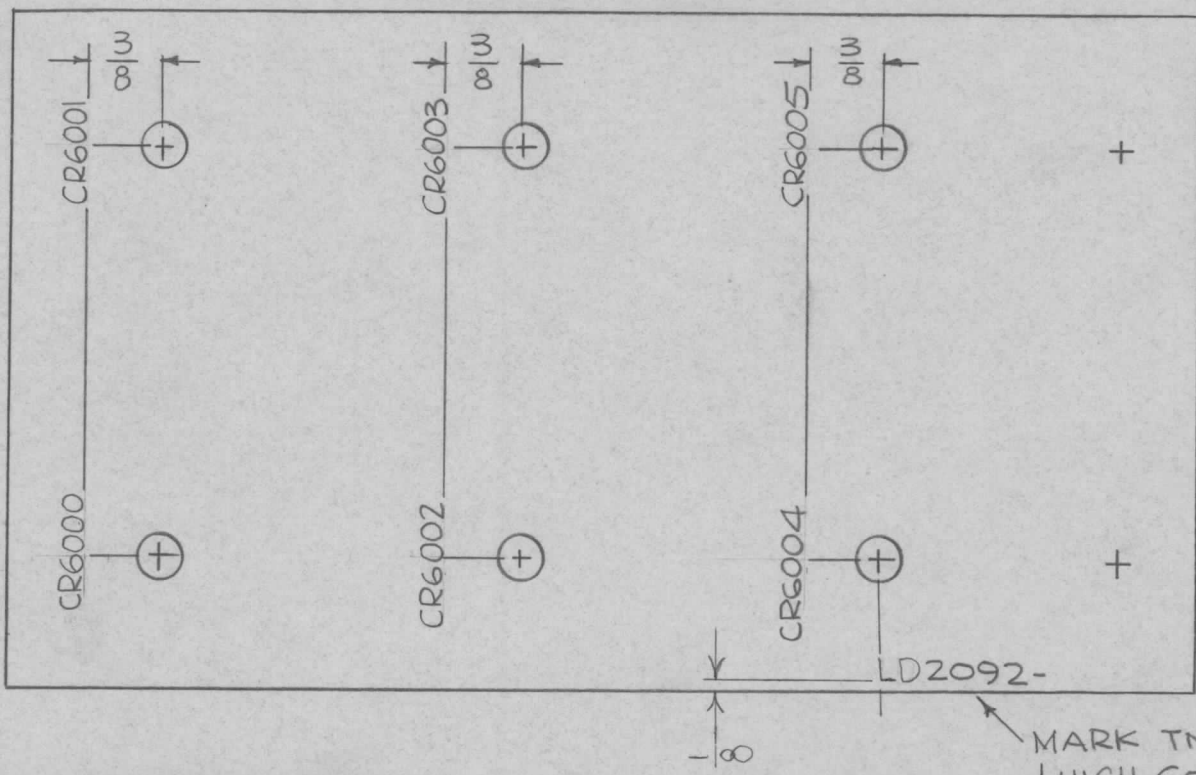
SCALE-1:1

MARK TMC PART NO 1/8 HIGH BLK GOTHIC W/LATEST REV. LETTER ON REAR OF DIAL.

(REF: MR 191-6)

							REQ. ITEM	PART NO.	DUDDLES	DESCRIPTION	SYMBOL
									THE TECHNICAL MATERIEL CORP. MAMARONECK, NEW YORK		
									MARKING, DIAL		
ϕ	ORIGINAL RELEASE FOR PRODUCTION	9/26/66	ϕ	CV							
SYM	DESCRIPTION	DATE	CH. NO.	DRAFTS	CHECKER	ENG. APP.	MATERIAL		G.D.L.	<i>[Signature]</i>	<i>[Signature]</i>
UNLESS OTHERWISE SPECIFIED DIMENSIONS ARE IN INCHES AND INCLUDE CHEMICALLY APPLIED OR PLATED FINISHES		SCALE		AS NOTED			TYPE & TEMPER	HEAT TREAT. SPEC.	DRAWN	CHECKED	FINAL APPROVAL
DECIMALS .X \pm .05 .XX \pm .01 .XXX \pm .005	TOLERANCES	FRACTIONS \pm 1/64 ANGLES \pm 0° 30'	CODE				FINISH & SPEC. NO.		ELEC. DES. APP.	MECH. DES. APP.	LD2085 ϕ

REQ. PER UNIT	USED ON			LD2092 \emptyset
	MODEL	ASS'Y. NO.	DATE	
1	AP129	A5360	5-24-66	



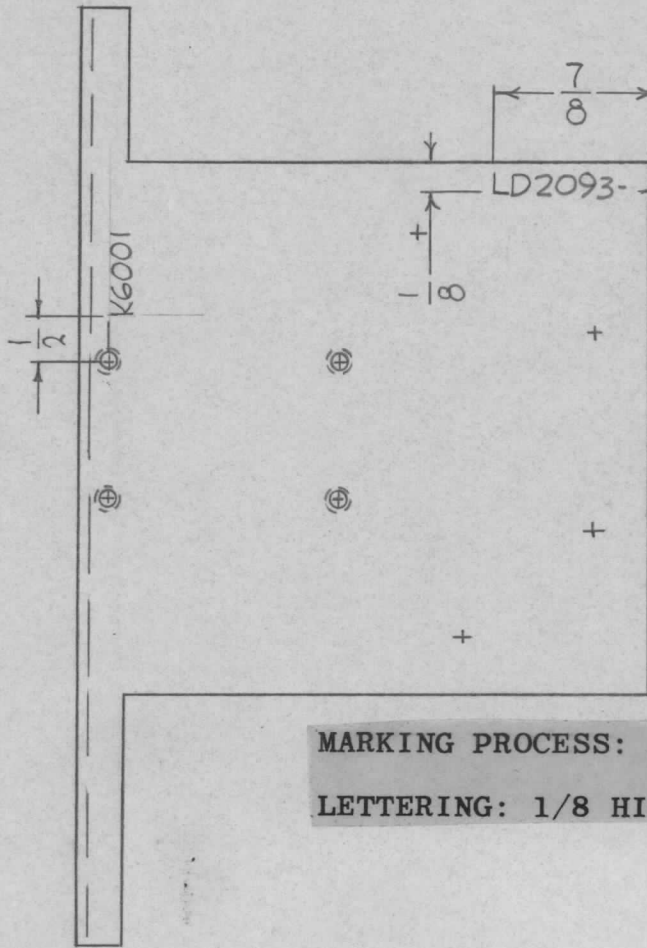
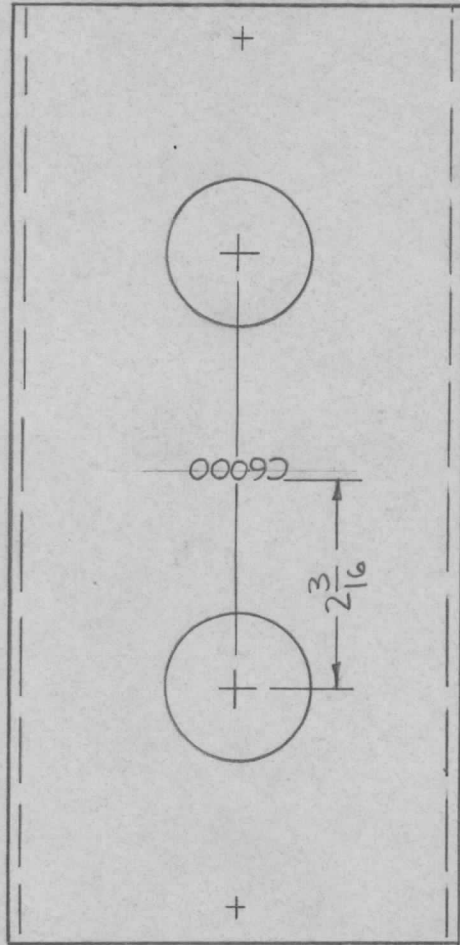
MARKING PROCESS: AS PER TMC SPECIFICATION S-727.
 LETTERING: 1/8 HIGH BLACK GOTHIC, LOCATED AS SHOWN.

MARK TMC P/N
 1/8 HIGH GOTHIC
 W/LATEST REV.
 LETTER.

REF: PX981-

\emptyset	ORIGINAL RELEASE FOR PRODUCTION	12/2/66	\emptyset	CV			REQ. ITEM	PART NO.	F. BUDETTI	DESCRIPTION	SYMBOL	
XI	ADD LOC DIM. FORTMC PT. NO.	11/29/66	CV	Jc			STOCK SIZE		THE TECHNICAL MATERIEL CORP. MAMARONECK, NEW YORK			
X	EXP. RELEASE	5-25-66	X				MATERIAL		MARKING BD, MTG RECTIFIERS AS PER TMC SPEC. S727			
SYM	DESCRIPTION	DATE	CH. NO.	DRAFTS	CHECKER	ENG. APP.	TYPE & TEMPER		HEAT TREAT. SPEC.	DRAWN	CHECKED	FINAL APPROVAL
UNLESS OTHERWISE SPECIFIED DIMENSIONS ARE IN INCHES AND INCLUDE CHEMICALLY APPLIED OR PLATED FINISHES		SCALE		1:1			FINISH & SPEC. NO.		ELEC. DES. APP.	MECH. DES. APP.	LD2092	\emptyset
DECIMALS .X \pm .05 .XX \pm .01 .XXX \pm .005	TOLERANCES	FRACTIONS \pm 1/64 ANGLES \pm 0° 30'	CODE A									

REQ. PER UNIT	USED ON			LD2093	Ø
	MODEL	ASS'Y. NO.	DATE		
1	AP129	A5362	5-24-66		



MARK TMC P/N
1/8 HIGH GOTHIC
W/LATEST REV.
LETTER.

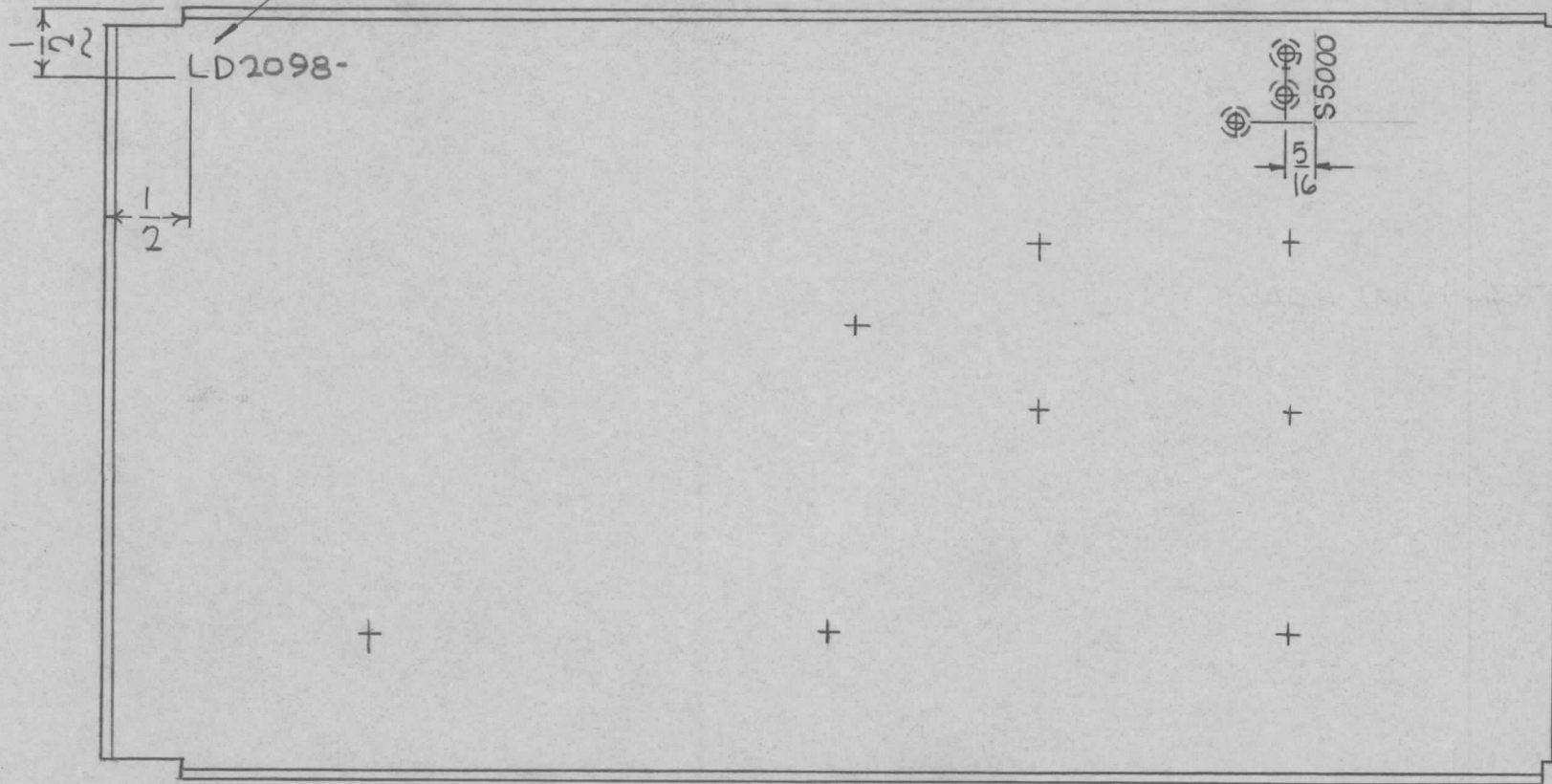
MARKING PROCESS: AS PER TMC SPECIFICATION S-727.
LETTERING: 1/8 HIGH BLACK GOTHIC, LOCATED AS SHOWN.

REF: MS 4907

Ø	ORIGINAL RELEASE FOR PRODUCTION	11/30/66	Ø				REQ. ITEM	PART NO.	F. BUDETTI	DESCRIPTION	SYMBOL	
XI	ADD LOC. DIM FOR TMC PT. NO.	11-19-66	M	Jc						THE TECHNICAL MATERIEL CORP. MAMARONECK, NEW YORK		
X	EXP. RELEASE	5-25-66	X	MS		MA				MARKING, BRACKET, MTG. CAP.		
SYM	DESCRIPTION	DATE	CH. NO.	DRAFTS	CHECKER	ENG. APP.				AS PER TMC SPEC. S-727		
UNLESS OTHERWISE SPECIFIED DIMENSIONS ARE IN INCHES AND INCLUDE CHEMICALLY APPLIED OR PLATED FINISHES		SCALE	1:1									
DECIMALS .X ± .05 .XX ± .01 .XXX ± .005	TOLERANCES	FRACTIONS ± 1/64 ANGLES ± 0° 30'	CODE	A								
							TYPE & TEMPER	HEAT TREAT. SPEC.	DRAWN	CHECKED	FINAL APPROVAL	
											LD2093	
							FINISH & SPEC. NO.		ELEC. DES. APP.	MECH. DES. APP.	Ø	

MARK TMC P/N
 1/8 HIGH GOTHIC
 W/LATEST REV. LETTER.

REQ. PER UNIT	USED ON			LD2098	⊗
	MODEL	ASS'Y. NO.	DATE		
1	AP128	A5258	6-6-66		



MARKING PROCESS: AS PER TMC SPECIFICATION S-727.

LETTERING: 1/8 HIGH BLACK GOTHIC, LOCATED AS SHOWN.

REF: MS4973-

REQ. ITEM	PART NO.	F. BUDETTI DESCRIPTION				SYMBOL
		THE TECHNICAL MATERIEL CORP. MAMARONECK, NEW YORK				
⊗ ORIGINAL RELEASE	11.11.66	W	WFO			
X EXP. RELEASE						
SYM	DESCRIPTION	DATE	CH. NO.	DRAFTS	CHECKER	ENG. APP.
UNLESS OTHERWISE SPECIFIED DIMENSIONS ARE IN INCHES AND INCLUDE CHEMICALLY APPLIED OR PLATED FINISHES		SCALE				
TOLERANCES		1/2:1				
DECIMALS .X ± .05 .XX ± .01 .XXX ± .005	FRACTIONS ± 1/64 ANGLES ± 0° 30'	CODE				
A						
STOCK SIZE		MARKING, PLATE, SIDE, RIGHT AS PER TMC SPEC. S727				
MATERIAL						
TYPE & TEMPER		HEAT TREAT. SPEC.	DRAWN	CHECKED	FINAL APPROVAL	
			AA	MA	LD2098 ⊗	
FINISH & SPEC. NO.		ELEC. DES. APP.	MECH. DES. APP.			