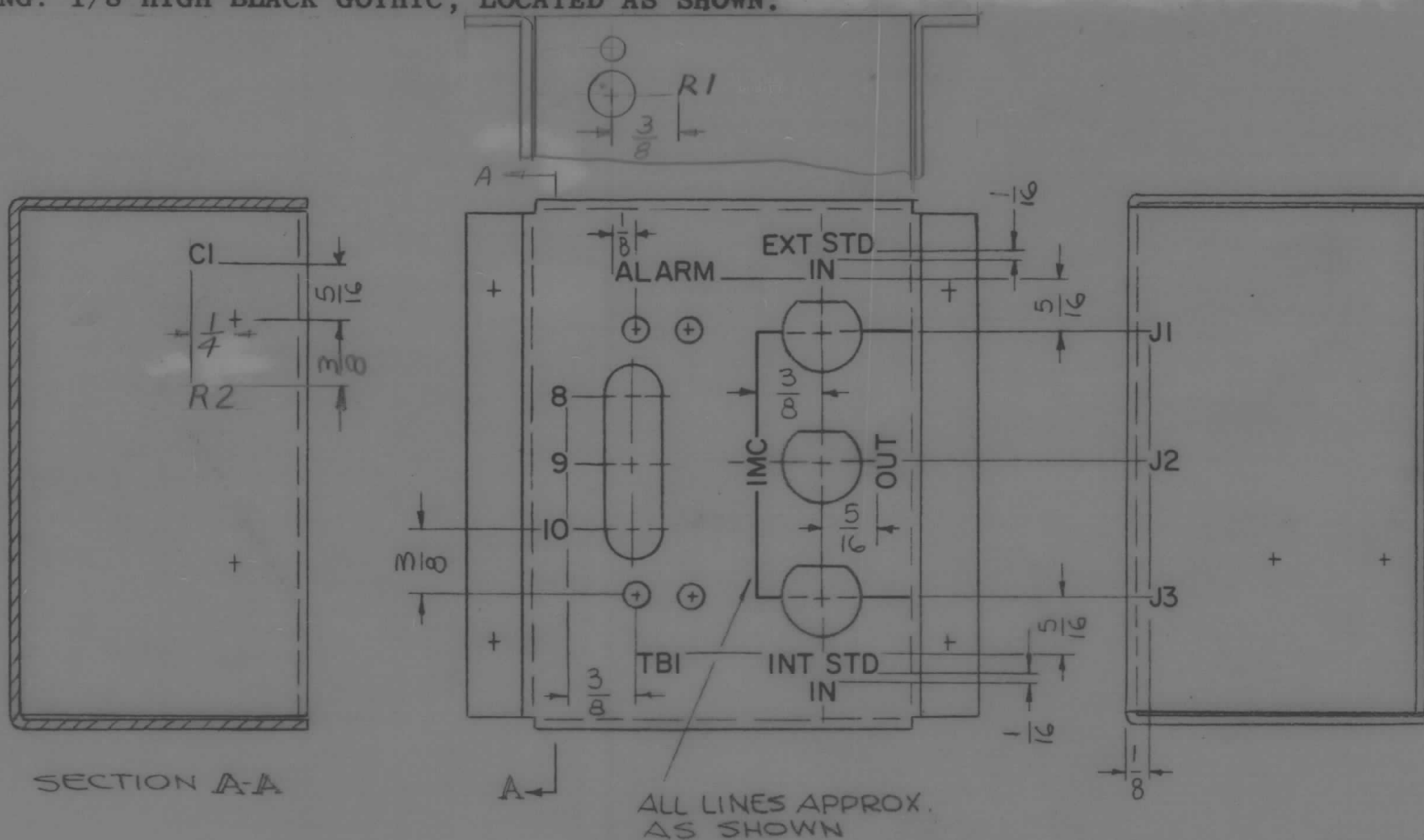


MARKING PROCESS: AS PER TMC SPECIFICATION S-727.

LETTERING: 1/8 HIGH BLACK GOTHIC, LOCATED AS SHOWN.

REQ. PER UNIT 1	USED ON			LD2035 ϕ
	MODEL KIT-270	ASS'Y. NO. AX619	DATE 13 DEC 65	



MARK TMC PART NO LD2035
1/8 HIGH GOTHIC W/LATEST REV. LETTER, (ON LIP)

REF: MS4835

						REQ. ITEM	PART NO.	BUDETTI.	DESCRIPTION	SYMBOL		
						STOCK SIZE			THE TECHNICAL MATERIEL CORP. MAMARONECK, NEW YORK			
						MATERIAL			MARKING, CHASSIS MAIN			
						TYPE & TEMPER			MARKING PROCESS: AS PER TMC SPEC. S727			
UNLESS OTHERWISE SPECIFIED DIMENSIONS ARE IN INCHES AND INCLUDE CHEMICALLY APPLIED OR PLATED FINISHES						SCALE 1:1			BCM	JCS	M. Mang 12/4/65	
DECIMALS .X ± .05 .XX ± .01 .XXX ± .005						FRACTIONS ± 1/64 ANGLES ± 0° 30'			CODE A	DRAWN CHECKED FINAL APPROVAL		
TOLERANCES						FINISH & SPEC. NO.			ELEC. DES. APP. MECH. DES. APP.			
									LD2035 ϕ			