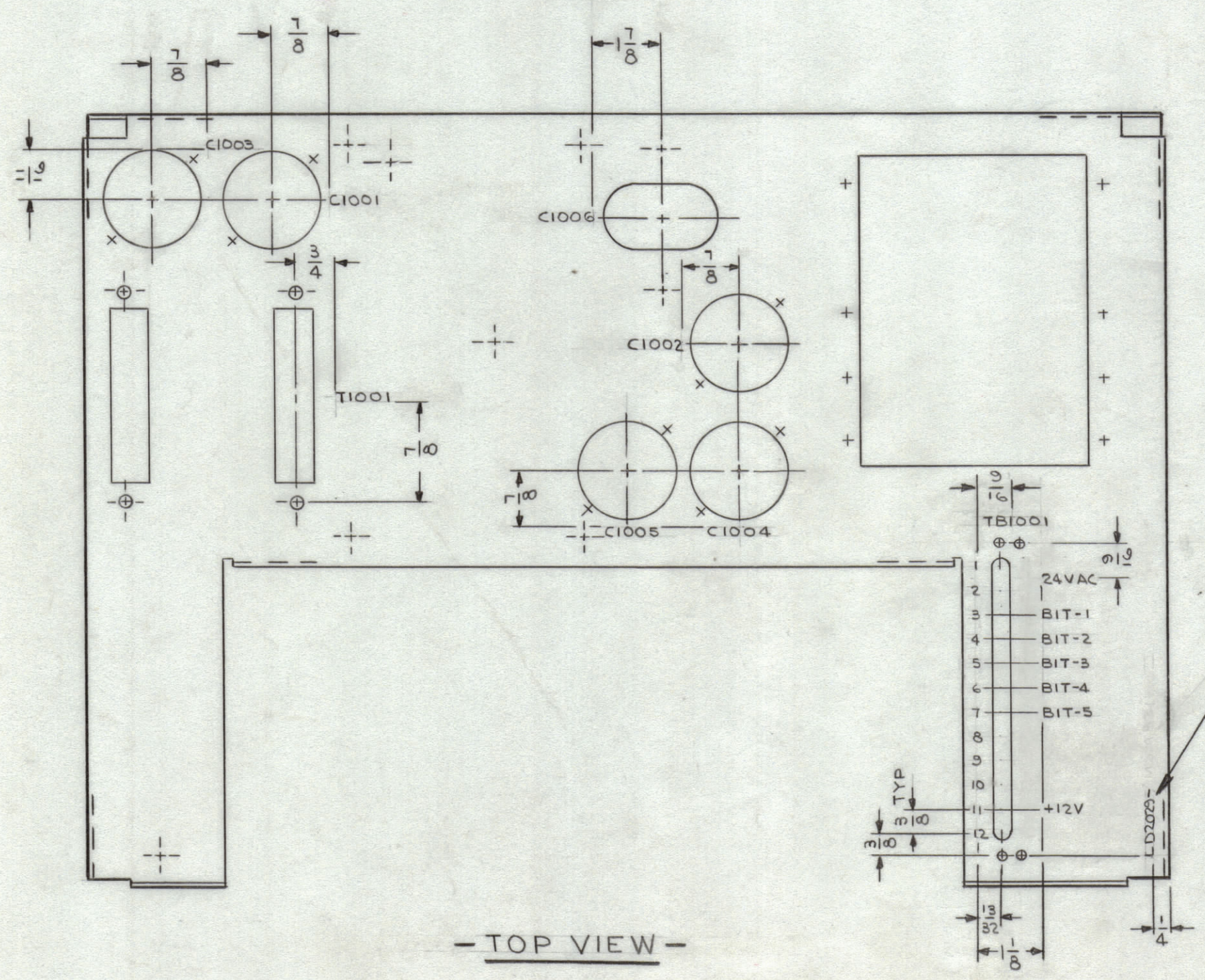
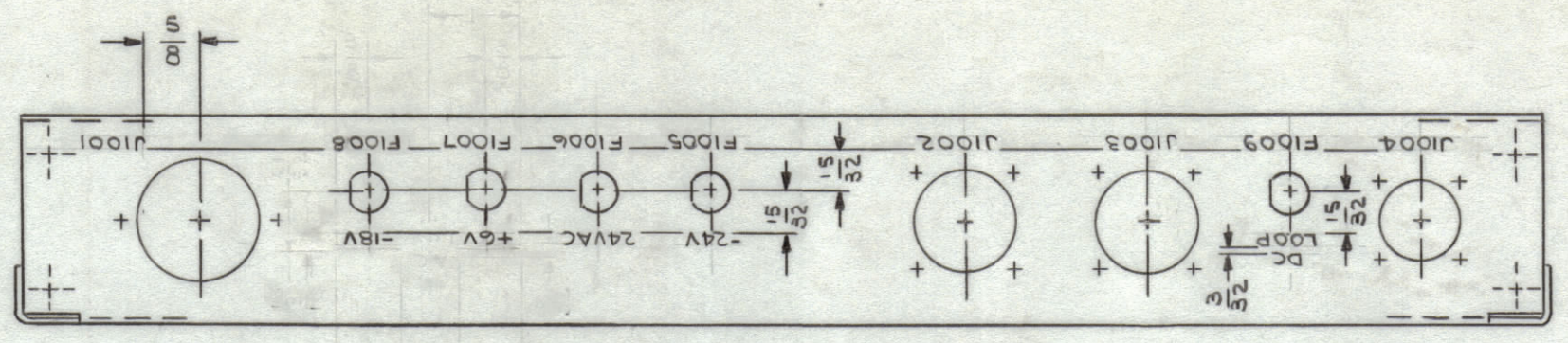


| REVISIONS | | | | | | | |
|-----------|-----|---------------------------------|---------|------------|-------|------|------|
| ZONE | SYM | DESCRIPTION | DATE | E.M.N. NO. | DRAFT | CHKD | APPD |
| D4 | X1 | 24VAC WAS -24V | 1/25/66 | | JL | | JL |
| G6 | X2 | F1007 & 8 WERE "AC LINE" FUSES. | 3/31/66 | | JL | | JL |
| | Ø | ORIGINAL RELEASE FOR PRODUCTION | 4-11-66 | Ø | WV | | WV |



- TOP VIEW -

UNLESS OTHERWISE SPECIFIED

- 1-MARKING PROCESS: AS PER TMC SPECIFICATION S-727.
- 2-LETTERING: 1/8 HIGH BLACK GOTHIC, LOCATED AS SHOWN.

NOTES

| | | |
|---|---------------|------------|
| 1 | RTPH-1 | A5340 |
| Q'TY./UNIT | MODEL USED ON | ASS'Y. NO. |
| SCALE 1/2 | CODE | |
| THE CONTENTS OF THIS DRAWING ARE THE EXCLUSIVE PROPERTY OF THE TECHNICAL MATERIEL CORP. ITS UNAUTHORIZED USE OR REPRODUCTION IN WHOLE OR IN PART IS STRICTLY FORBIDDEN. | | |

REF. MS4821

| REQ'D. | ITEM | PART NUMBER | DESCRIPTION | SYMBOL |
|---|------|--|-----------------|--------------------------------------|
| F.E. EATON LIST OF MATERIAL | | | | |
| MATERIAL | | THE TECHNICAL MATERIEL CORP. MAMARONECK, NEW YORK | | |
| FINISH | | TITLE MARKING-CHASSIS, ELECT., MAIN | | |
| UNLESS OTHERWISE SPECIFIED DIMENSIONS ARE IN INCHES AND INCLUDE CHEMICALLY APPLIED OR PLATED FINISHES | | DRAWN J. LESHINSKI | DATE 12/3/65 | FINAL APPROVAL <i>[Signature]</i> |
| DECIMALS .X ± .05 .XX ± .01 .XXX ± .005 | | CHECKED <i>[Signature]</i> | DATE 4-5-66 | DATE 4/7/66 |
| FRACTIONS ± 1/64 ANGLES ± 0° 30' | | ELECT. DES. <i>[Signature]</i> | DATE 4/6/66 | DATE |
| TOLERANCES | | MECH. DES. <i>[Signature]</i> | DATE | DATE |
| SHEET 1 OF 2 | | | | REV. LTR. |

LD2029 Ø