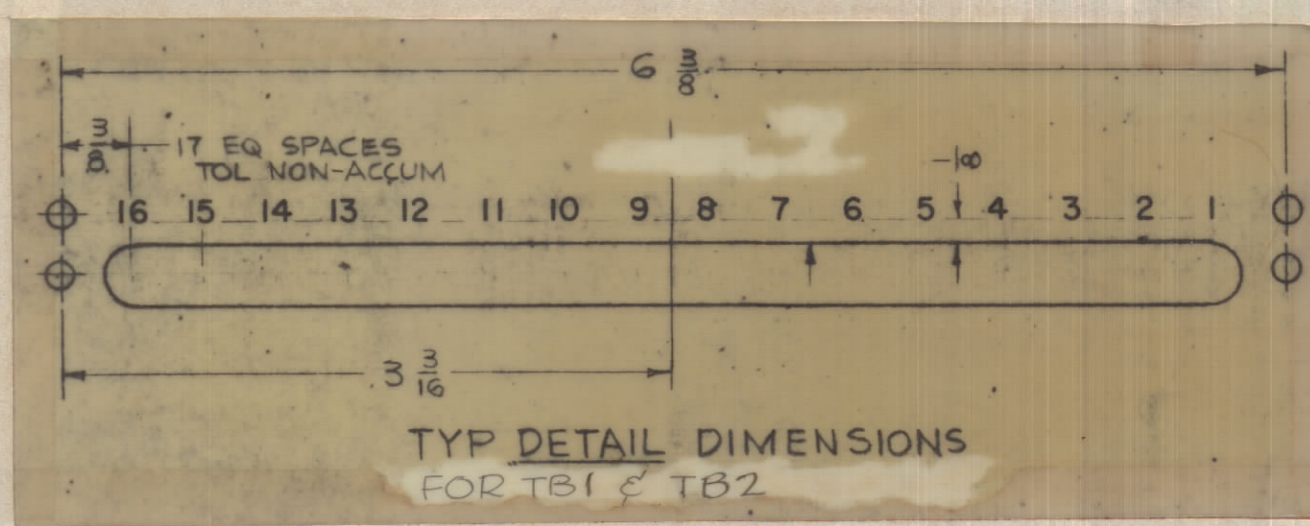
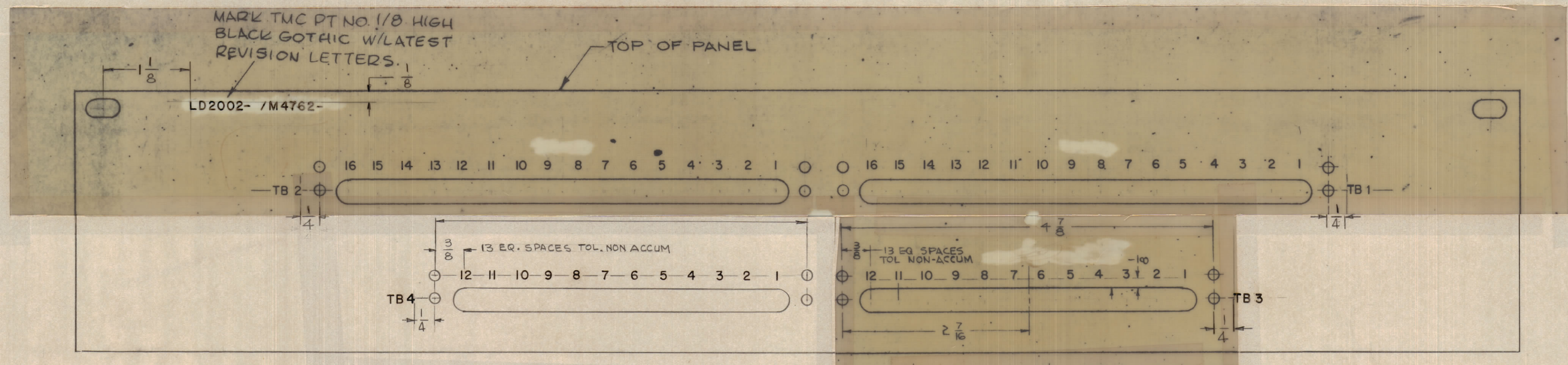
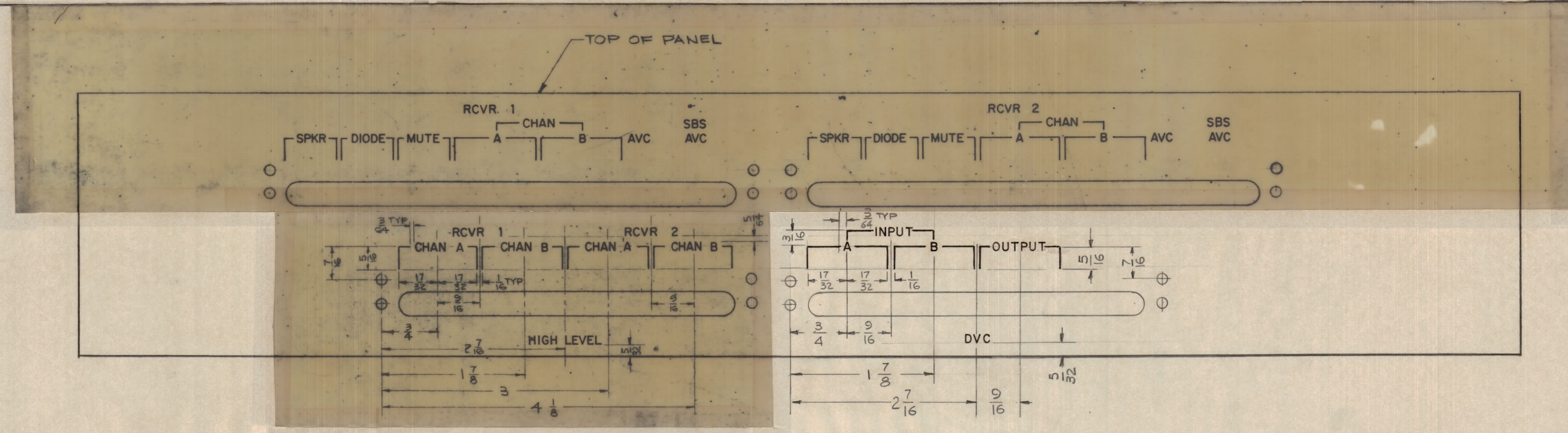


REVISIONS						
ZONE	SYM	DESCRIPTION	DATE	E.M.N. NO.	DRAFT	CHKD
	Ø	ORIGINAL RELEASE FOR PRODUCTION	7/17/65	Ø	AVL	

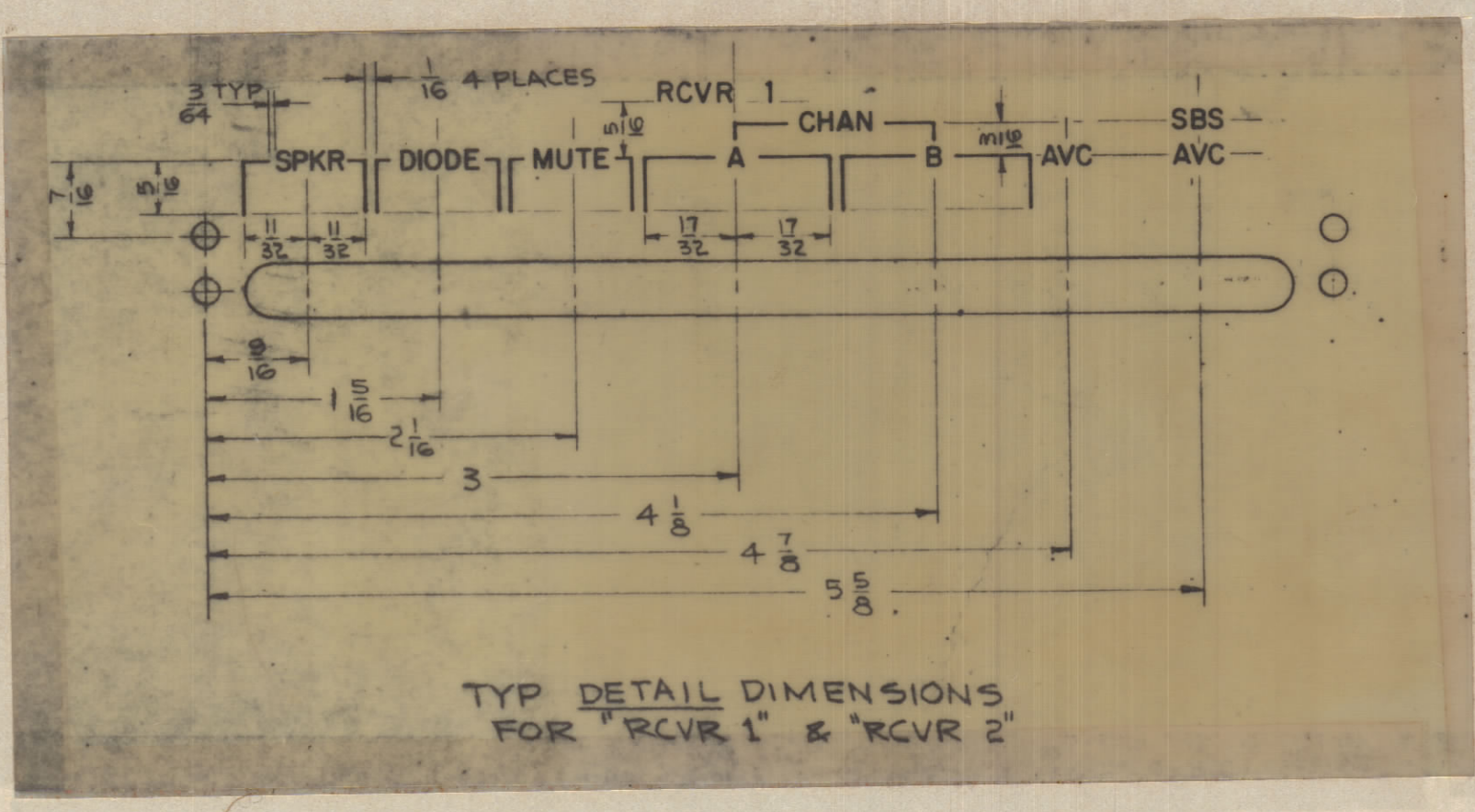


REAR VIEW AS SHOWN

MARKING PROCESS: AS PER TMC SPECIFICATION S-727.  
LETTERING: 1/8 HIGH BLACK GOTHIC, LOCATED AS SHOWN.



FRONT VIEW AS SHOWN



HEIGHT OF LETTER	DEPTH OF STROKE	WIDTH OF STROKE
1/8	.010	.020
LINES	.010	.015

UNLESS OTHERWISE SPECIFIED —  
ENGRAVING PROCESS: AS PER TMC SPEC. S566.  
ALL LETTERING TO BE WHITE FILLED.  
ALL LINES TO BE WHITE FILLED.  
ENGRAVING TO BE GOTHIC WHITE FILLED SIZE SHOWN ON CHART.

REF: MS 4762

REQ'D.	ITEM	PART NUMBER	DESCRIPTION	SYMBOL
STURMER LIST OF MATERIAL				
MATERIAL			THE TECHNICAL MATERIEL CORP. MAMARONECK, NEW YORK	
FINISH			TITLE MARKING, FRONT PANEL	
QTY./UNIT	MODEL USED ON	CODE	DATE	FINAL APPROVAL
SCALE 1:1	A		9-15-65	AVL
THE CONTENTS OF THIS DRAWING ARE THE EXCLUSIVE PROPERTY OF THE TECHNICAL MATERIEL CORP. ITS UNAUTHORIZED USE OR REPRODUCTION IN WHOLE OR IN PART IS STRICTLY FORBIDDEN.			DECIMALS ± .05 XXX ± .005	FRACTIONS ± 1/64 ANGLES ± 0° 30'
ELECT. DES.		DATE	REV. LTR.	
MECH. DES.		DATE	REV. LTR.	
		7-16-65	LD2002 Ø	

NOTES

LD2002 Ø