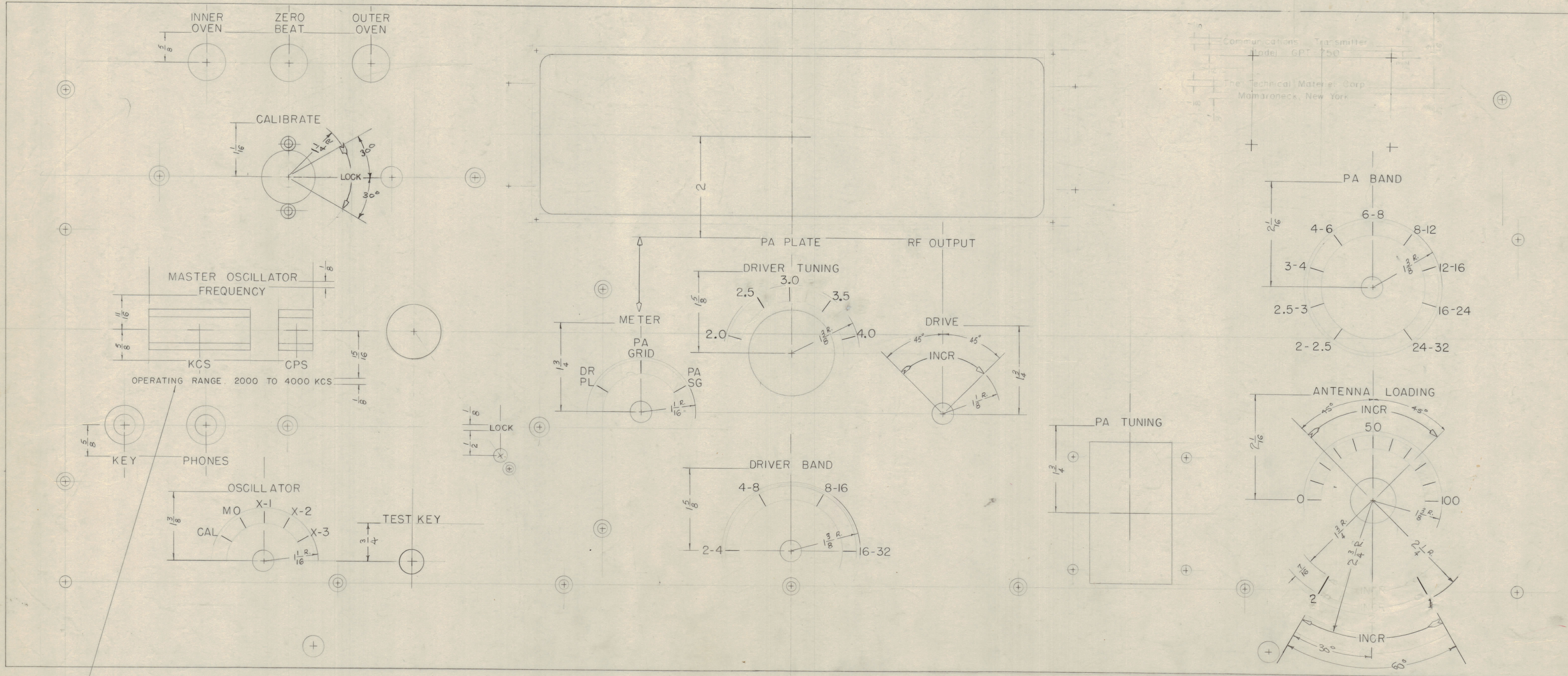
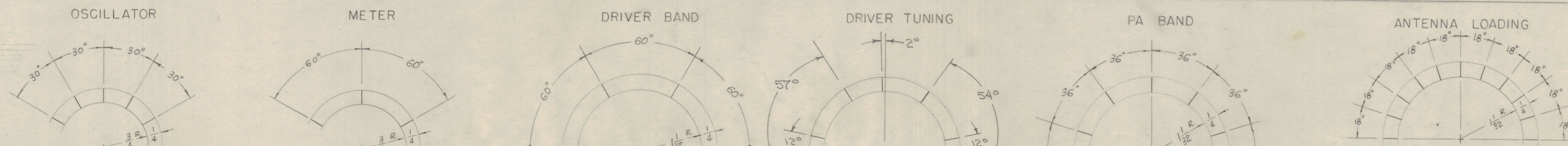


IF IT IS FOUND DESIRABLE TO CHANGE ANY TOLERANCE OR OTHER DETAIL SPECIFIED ON THIS DRAWING NOTIFY THE PURCHASER PROMPTLY.
 MAXIMUM ALLOWABLE TOLERANCES HAVE BEEN DETERMINED AND DEVIATIONS WILL BE CAUSE FOR REJECTION. REMOVE ALL BURRS AND SHARP EDGES.



Communications Transmitter
 Model GPT-750
 The Technical Materiel Corp.
 Mamaroneck, New York.



OPERATING RANGE
 2000 TO 4000 KCS,
 TO BE RED FILLED

ANGLE DISPLACEMENT

ANGLE DISPLACEMENT

ANGLE DISPLACEMENT

ANGLE DISPLACEMENT

ANGLE DISPLACEMENT

ANGLE DISPLACEMENT

REV	DESCRIPTION	DATE	BY	CHKD	APP'D
1	Number of Letters Deleted	6/10/54	G	WJP	A.J.J.
2	ANT. LOADING SWITCH WAS A 3 POS. SW.	9/22/54	G	WJP	A.J.J.
3	ANT. LOADING SWITCH CHANGED	8/12/54	S	WJP	A.J.J.
4	TEST KEY ADDED	6/14/54	A	WJP	A.J.J.
5	lock	6/14/54	A	WJP	A.J.J.
6	ANT. LOAD SW. 1+2 REVERSED	2/2/55	3	WJP	A.J.J.
7	5/8 WAS 5/16	1-23-50	2	WJP	A.J.J.
8	DRIVER TUNING 26 CHANGED				

TOLERANCES		SCALE:	
DEC. DIM. ±	DRILL, PUNCH, COMMERCIAL STOCK		
FRAC. DIM. ±	SIZES AND MANUFACTURERS		
ANGULAR DIM. ±	TOLERANCES ARE NOT INCLUDED.		

ALL LETTERING HEIGHT 5/32 UNLESS OTHERWISE NOTED.

LETTER HEIGHT	DEPTH OF STROKE	WIDTH OF STROKE
5/32	.010	.020
1/8	.010	.020

REQ. PER UNIT	MODEL	PROJECT NO.	ASSY. NO.	DATE

REQ. ITEM	PART NO.	DESCRIPTION	SYMBOL
STOCK SIZE			
MATERIAL			
WEIGHT PER PC.			
TYPE & TEMPER			
HEAT TREAT. SPEC.			
FINISH & SPEC. NO.			

REF: M5-719

THE TECHNICAL MATERIEL CORP.
 MAMARONECK, NEW YORK

FRONT PANEL ENGRAVING

MODEL R.T.F.

1-4-55
 1-19-50

REF: M5-719 LD-240 G