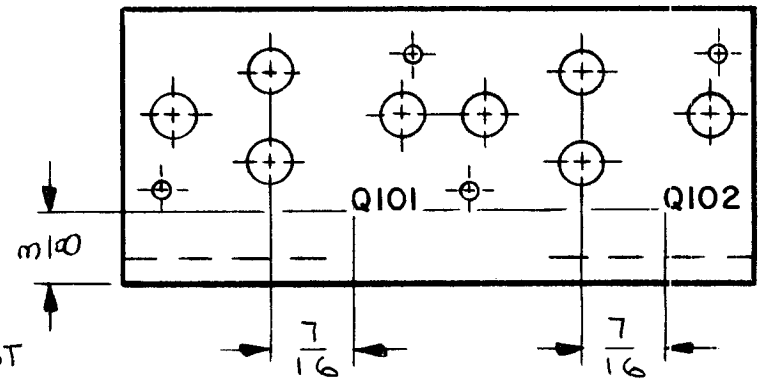
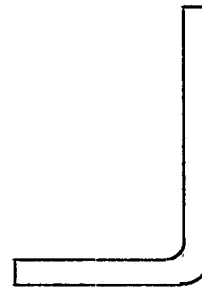
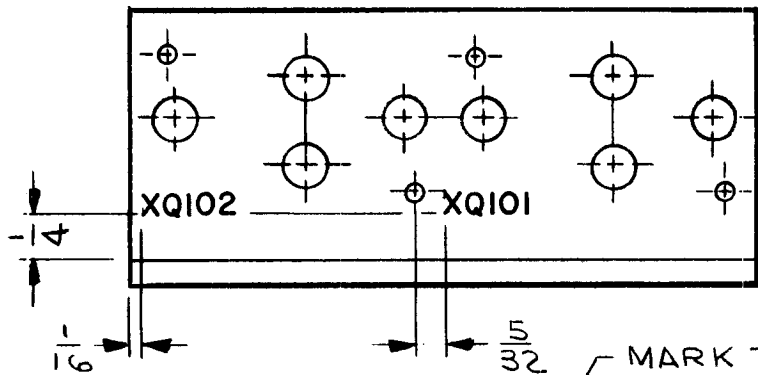
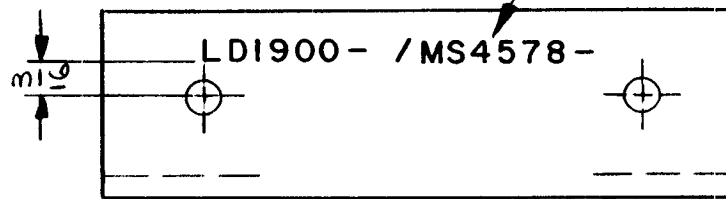


REQ. PER UNIT	USED ON			LD1900 Ø
	MODEL	ASS'Y. NO.	DATE	
1	RGC B-1		5/12/65	



MARK TMC PT. NO. W/LATEST REVISION LETTER



- UNLESS OTHERWISE SPECIFIED -

1-MARKING PROCESS: AS PER TMC SPECIFICATION S-727.

2-LETTERING: 1/8 HIGH BLACK GOTHIC, LOCATED AS SHOWN.

							REQ. ITEM	PART NO.	F. EATON	DESCRIPTION	SYMBOL
							//		THE TECHNICAL MATERIEL CORP. MAMARONECK. NEW YORK		
							STOCK SIZE		MARKING-BKT, MTG, HEAT SINK		
							//				
							MATERIAL				
Ø	ORIGINAL RELEASE FOR PRODUCTION	5/18/65	#	JL	J.M.				LESHINSKI	<i>QCB</i>	<i>F. Eaton 5/18/65</i>
SYM	DESCRIPTION	DATE	CH. NO.	DRAFTS	CHECKER	ENG. APP.					
UNLESS OTHERWISE SPECIFIED DIMENSIONS ARE IN INCHES AND INCLUDE CHEMICALLY APPLIED OR PLATED FINISHES		SCALE		1/1							
DECIMALS .X ± .05 .XX ± .01 .XXX ± .005	TOLERANCES	FRACTIONS ± 1/64 ANGLES ± 0° 30'	CODE								
							TYPE & TEMPER	HEAT TREAT. SPEC.	DRAWN	CHECKED	FINAL APPROVAL
									<i>W. Jordan 5/14/65</i>	<i>5/14/65</i>	LD1900 Ø
							FINISH & SPEC. NO.		ELEC. DES. APP.	MECH. DES. APP.	

REQ. PER UNIT	USED ON		
	MODEL	ASS'Y. NO.	DATE
2	DDR-5L		5-13-65
A	DDRR-506		9-14-65

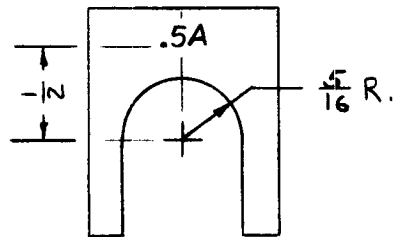
LD1901 | Ø

ENGRAVING PROCESS: AS PER TMC SPEC S-566

HIGHT OF LETTER - 1/8

DEPTH OF STROKE - .010

WIDTH OF STROKE - .020

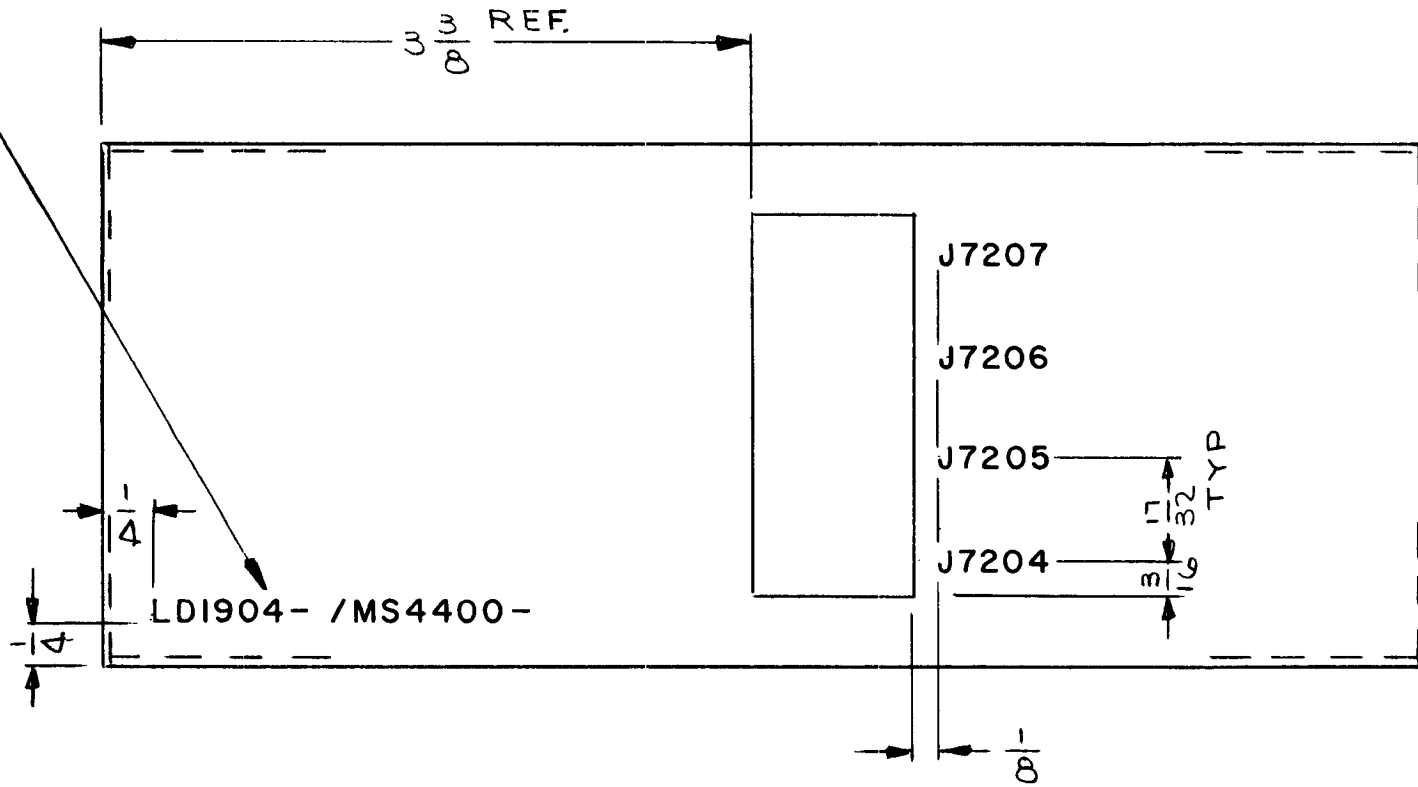


REF: MS4590

REQ.	ITEM	PART NO.	DESCRIPTION				SYMBOL
			<b>THE TECHNICAL MATERIEL CORP.</b> MAMARONECK. NEW YORK				
			STOCK SIZE				
Ø			MARKING, FUSE PLATE, IDEN.				
			MATERIAL				
SYM	DESCRIPTION		DATE	CH. NO.	DRAFTS	CHECKER	ENG. APP.
	UNLESS OTHERWISE SPECIFIED DIMENSIONS ARE IN INCHES AND INCLUDE CHEMICALLY APPLIED OR PLATED FINISHES		SCALE				
	DECIMALS .X ± .05 .XX ± .01 .XXX ± .005		FRACTIONS ± 1/64 ANGLES ± 0° 30'		TOLERANCES		
	TYPE & TEMPER		HEAT TREAT. SPEC.		DRAWN		CHECKED
	FINISH & SPEC. NO.		ELEC. DES. APP.		MECH. DES. APP.		
						M. STURMER 5-13-65	Ø
						9-14-65	LD1901   Ø

REQ. PER UNIT	USED ON			LD1904 Ø
	MODEL	ASS'Y. NO.	DATE	
1	HAFR-1		5/17/65	

MARK TMC PT. NO. W/ LATEST REVISION LETTER.



- UNLESS OTHERWISE SPECIFIED - - TOP VIEW -

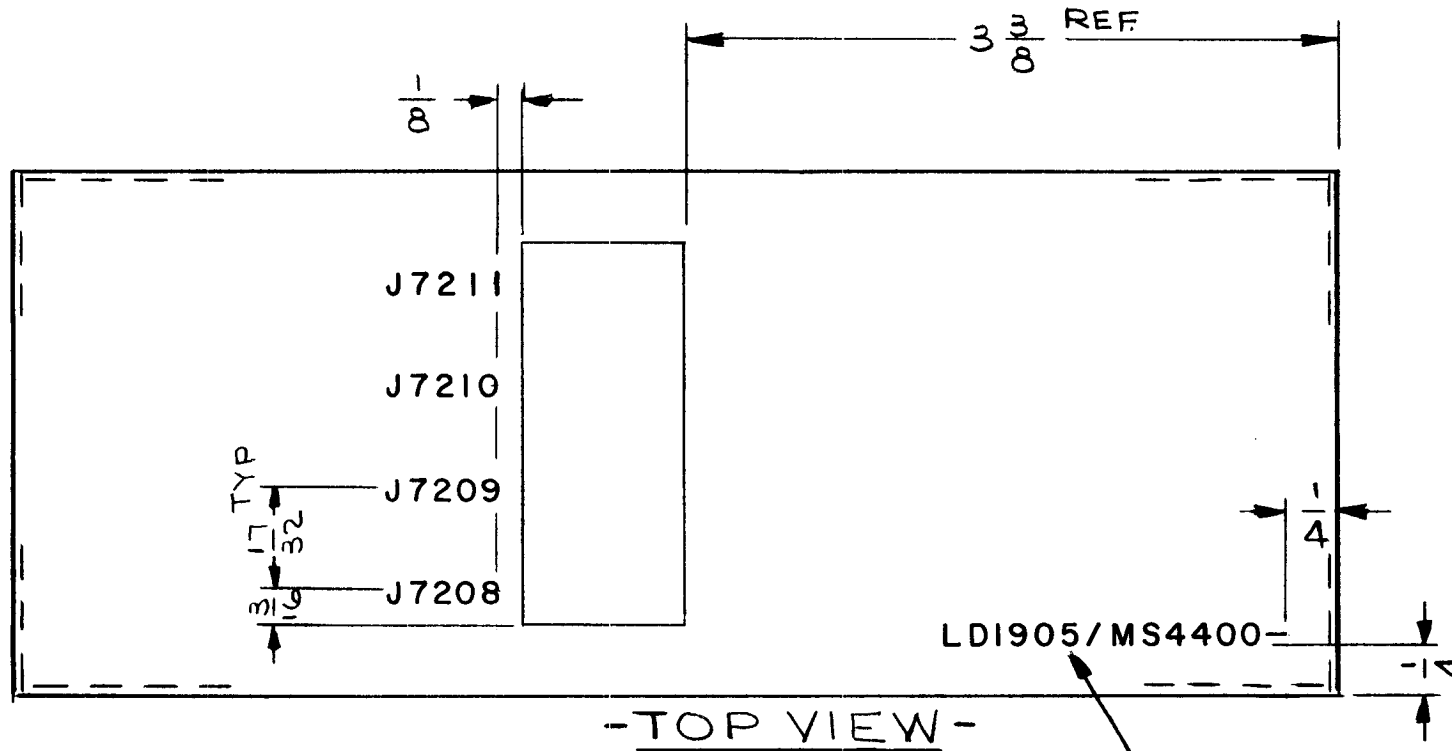
1- MARKING PROCESS: AS PER TMC SPECIFICATION S-727.

2- LETTERING: 1/8 HIGH BLACK GOTHIC, LOCATED AS SHOWN.

REF.: MS4400

REQ.	ITEM	PART NO.	DESCRIPTION				SYMBOL
		//	THE TECHNICAL MATERIEL CORP. MAMARONECK, NEW YORK				
		STOCK SIZE	MARKING- COVER, LEDEX				
		//					
		MATERIAL					
Ø	ORIGINAL RELEASE FOR PRODUCTION	5/10/65	AA	JL			
SYM	DESCRIPTION	DATE	CH. NO.	DRAFTS	CHECKER	ENG. APP.	
UNLESS OTHERWISE SPECIFIED DIMENSIONS ARE IN INCHES AND INCLUDE CHEMICALLY APPLIED OR PLATED FINISHES		SCALE	1/1				
DECIMALS .X ± .05 .XX ± .01 .XXX ± .005	TOLERANCES	FRACTIONS ± 1/64 ANGLES ± 0° 30'	CODE				
FINISH & SPEC. NO.		ELEC. DES. APP.	MECH. DES. APP.		LD1904 Ø		

REQ. PER UNIT	USED ON			LD1905 $\emptyset$
	MODEL	ASS'Y. NO.	DATE	
1	HAFR-1		5/17/65	



-TOP VIEW-

-UNLESS OTHERWISE SPECIFIED-

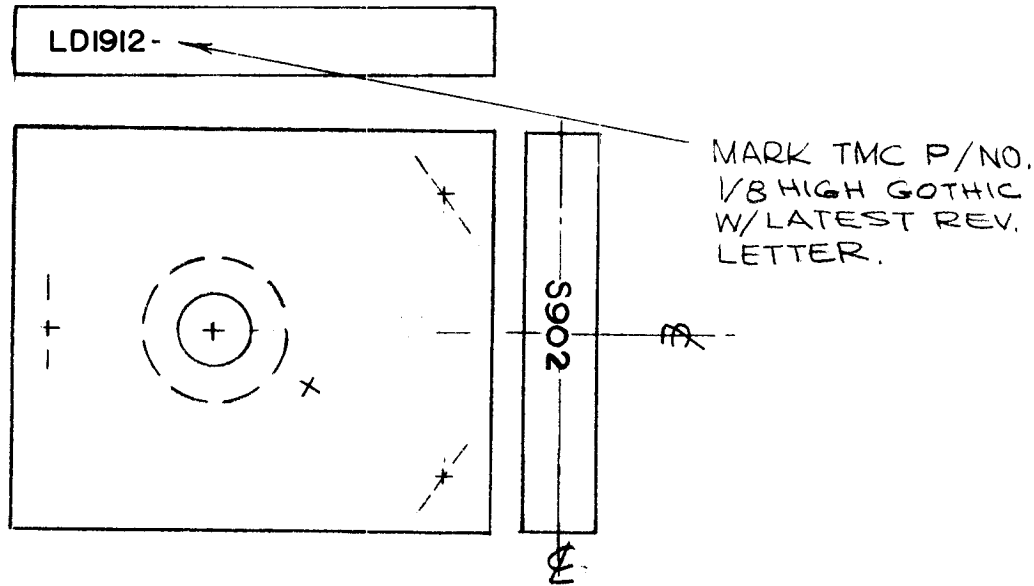
- 1-MARKING PROCESS: AS PER TMC SPECIFICATION S-727.
- 2-LETTERING: 1/8 HIGH BLACK GOTHIC, LOCATED AS SHOWN.

MARK TMC PT. NO. W/LATEST REVISION LETTER.

REF.: MS 4400

REQ.	ITEM	PART NO.	DESCRIPTION				SYMBOL
		—//—	THE TECHNICAL MATERIEL CORP. MAMARONECK, NEW YORK				
		STOCK SIZE	MARKING - COVER, LEDEX				
		—//—					
		MATERIAL					
		TYPE & TEMPER	HEAT TREAT. SPEC.	DRAWN	CHECKED	FINAL APPROVAL	
				J. LESHINSKI <i>file</i> 5/18/65	<i>FC</i> 5/17/65		
		FINISH & SPEC. NO.	ELEC. DES. APP.	MECH. DES. APP.	LD1905 $\emptyset$		
				<i>B/B</i>			

REQ. PER UNIT	USED ON			LD1912	Ø
	MODEL	ASS'Y. NO.	DATE		
1	TST-10K		6-4-65		



**MARKING PROCESS: AS PER TMC SPECIFICATION S-727.**

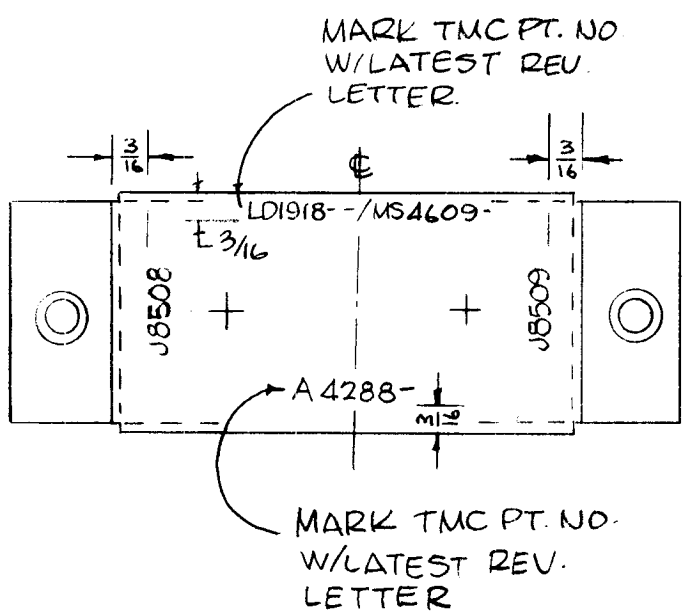
**LETTERING: 1/8 HIGH BLACK GOTHIC, LOCATED AS SHOWN.**

REF: PM1265

REQ. ITEM	PART NO.	F. BUDETTI DESCRIPTION				SYMBOL
Ø		ORIGINAL RELEASE				
X2		PM1265 DELETED FROM TMC PART NO.				
X1		RELOCATED "S902"				
SYM	DESCRIPTION	DATE	CH. NO.	DRAFTS	CHECKER	ENG. APP.
UNLESS OTHERWISE SPECIFIED DIMENSIONS ARE IN INCHES AND INCLUDE CHEMICALLY APPLIED OR PLATED FINISHES		SCALE	1:1			
DECIMALS .X ± .05 .XX ± .01 .XXX ± .005	TOLERANCES	FRACTIONS ± 1/64 ANGLES ± 0° 30'	CODE A			
TYPE & TEMPER		HEAT TREAT. SPEC.	DRAWN	CHECKED	FINAL APPROVAL	
FINISH & SPEC. NO.		ELEC. DES. APP.	MECH. DES. APP.		LD1912 Ø	

TMC DASH	REQ. PER UNIT	USED ON		
		MODEL	ASS'Y. NO.	DATE
-1	2	DDR 5L		5-25-65
-2	8	DDRR-506		

LD1918 A



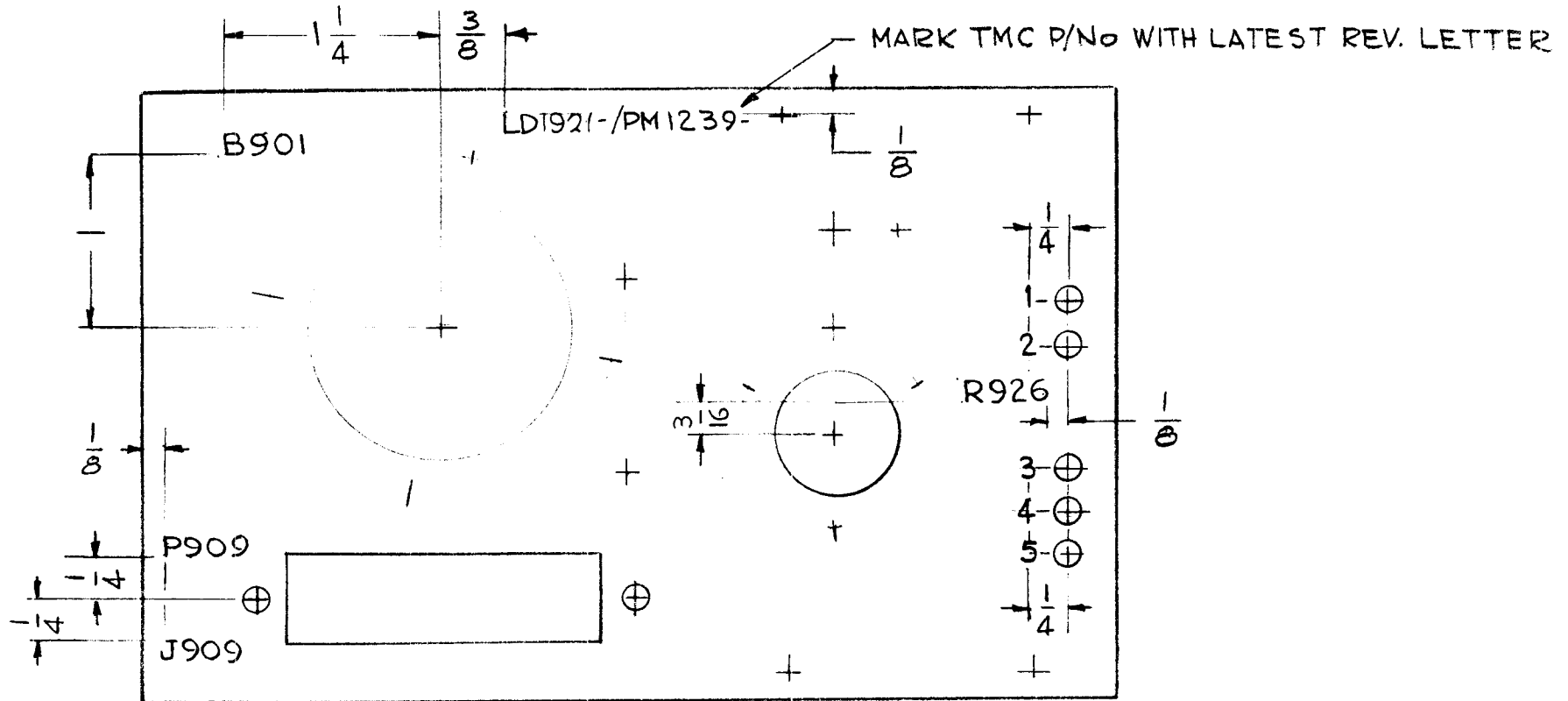
TMC NO.	STAMP WA.#
LD1918-1/MS4609	A4288
LD1918-2/MS4609	A4288-2

UNLESS OTHERWISE SPECIFIED:  
 MARKING PROCESS AS PER TMC SPEC S727.  
 LETTERING 1/8 HIGH, BLACK GOTHIC.

REF: MS 4609

							REQ. ITEM	PART NO.	STURMER	DESCRIPTION	SYMBOL	
									THE TECHNICAL MATERIEL CORP. MAMARONECK. NEW YORK			
A	TMC. P/N CHART ADDED	6-21-65	14301	DKV.	JCB			STOCK SIZE	MARKING, ATTENUATOR CHASSIS			
Ø	ORIGINAL RELEASE FOR PRODUCTION	4/3/65	MS									
SYM	DESCRIPTION	DATE	CH. NO.	DRAFTS	CHECKER	ENG. APP.	MATERIAL					
UNLESS OTHERWISE SPECIFIED DIMENSIONS ARE IN INCHES AND INCLUDE CHEMICALLY APPLIED OR PLATED FINISHES		SCALE					M. STURMER 6-3-65					
DECIMALS .X ± .05 .XX ± .01 .XXX ± .008		TOLERANCES		FRACTIONS ± 1/64 ANGLES ± 0° 30'		CODE	TYPE & TEMPER	HEAT TREAT. SPEC.	DRAWN	CHECKED	FINAL APPROVAL	
							FINISH & SPEC. NO.		ELEC. DES. APP.	MECH. DES. APP.	LD1918 A	

REQ. PER UNIT	USED ON			LD1921	✓
	MODEL	ASS'Y. NO.	DATE		
1	TSTE-10K	AS1C5	6-8-65		



MARKING PROCESS: AS PER TMC SPECIFICATION S-727.

LETTERING: 1/8 HIGH BLACK GOTHIC, LOCATED AS SHOWN.

REF: PM1239

							REQ. ITEM	PART NO.	DESCRIPTION	SYMBOL		
							STOCK SIZE		THE TECHNICAL MATERIEL CORP. MAMARONECK. NEW YORK			
							MATERIAL		MARKING, PLATE, GEAR, FRONT			
Ø	ORIG RELEASE FOR -ROD.	5867	Ø	RG								
SYM	DESCRIPTION	DATE	CH. NO.	DRAFTS	CHECKER	ENG. APP.	MATERIAL					
UNLESS OTHERWISE SPECIFIED DIMENSIONS ARE IN INCHES AND INCLUDE CHEMICALLY APPLIED OR PLATED FINISHES		SCALE		1:1					FINAL APPROVAL			
DECIMALS .X ± .05 .XX ± .01 .XXX ± .005		FRACTIONS ± 1/64 ANGLES ± 0° 30'		TOLERANCES			CODE		DRAWN		CHECKED	
		A					TYPE & TEMPER		HEAT TREAT. SPEC.		FINISH & SPEC. NO.	
							DRAWN		CHECKED		ELEC. DES. APP.	
							DRAWN		CHECKED		MECH. DES. APP.	
							DRAWN		CHECKED		ELEC. DES. APP.	
							DRAWN		CHECKED		MECH. DES. APP.	
							DRAWN		CHECKED		ELEC. DES. APP.	
							DRAWN		CHECKED		MECH. DES. APP.	
							DRAWN		CHECKED		ELEC. DES. APP.	
							DRAWN		CHECKED		MECH. DES. APP.	
							DRAWN		CHECKED		ELEC. DES. APP.	
							DRAWN		CHECKED		MECH. DES. APP.	
							DRAWN		CHECKED		ELEC. DES. APP.	
							DRAWN		CHECKED		MECH. DES. APP.	
							DRAWN		CHECKED		ELEC. DES. APP.	
							DRAWN		CHECKED		MECH. DES. APP.	
							DRAWN		CHECKED		ELEC. DES. APP.	
							DRAWN		CHECKED		MECH. DES. APP.	
							DRAWN		CHECKED		ELEC. DES. APP.	
							DRAWN		CHECKED		MECH. DES. APP.	
							DRAWN		CHECKED		ELEC. DES. APP.	
							DRAWN		CHECKED		MECH. DES. APP.	
							DRAWN		CHECKED		ELEC. DES. APP.	
							DRAWN		CHECKED		MECH. DES. APP.	
							DRAWN		CHECKED		ELEC. DES. APP.	
							DRAWN		CHECKED		MECH. DES. APP.	
							DRAWN		CHECKED		ELEC. DES. APP.	
							DRAWN		CHECKED		MECH. DES. APP.	
							DRAWN		CHECKED		ELEC. DES. APP.	
							DRAWN		CHECKED		MECH. DES. APP.	
							DRAWN		CHECKED		ELEC. DES. APP.	
							DRAWN		CHECKED		MECH. DES. APP.	
							DRAWN		CHECKED		ELEC. DES. APP.	
							DRAWN		CHECKED		MECH. DES. APP.	
							DRAWN		CHECKED		ELEC. DES. APP.	
							DRAWN		CHECKED		MECH. DES. APP.	
							DRAWN		CHECKED		ELEC. DES. APP.	
							DRAWN		CHECKED		MECH. DES. APP.	
							DRAWN		CHECKED		ELEC. DES. APP.	
							DRAWN		CHECKED		MECH. DES. APP.	
							DRAWN		CHECKED		ELEC. DES. APP.	
							DRAWN		CHECKED		MECH. DES. APP.	
							DRAWN		CHECKED		ELEC. DES. APP.	
							DRAWN		CHECKED		MECH. DES. APP.	
							DRAWN		CHECKED		ELEC. DES. APP.	
							DRAWN		CHECKED		MECH. DES. APP.	
							DRAWN		CHECKED		ELEC. DES. APP.	
							DRAWN		CHECKED		MECH. DES. APP.	
							DRAWN		CHECKED		ELEC. DES. APP.	
							DRAWN		CHECKED		MECH. DES. APP.	
							DRAWN		CHECKED		ELEC. DES. APP.	
							DRAWN		CHECKED		MECH. DES. APP.	
							DRAWN		CHECKED		ELEC. DES. APP.	
							DRAWN		CHECKED		MECH. DES. APP.	
							DRAWN		CHECKED		ELEC. DES. APP.	
							DRAWN		CHECKED		MECH. DES. APP.	
							DRAWN		CHECKED		ELEC. DES. APP.	
							DRAWN		CHECKED		MECH. DES. APP.	
							DRAWN		CHECKED		ELEC. DES. APP.	
							DRAWN		CHECKED		MECH. DES. APP.	
							DRAWN		CHECKED		ELEC. DES. APP.	
							DRAWN		CHECKED		MECH. DES. APP.	
							DRAWN		CHECKED		ELEC. DES. APP.	
							DRAWN		CHECKED		MECH. DES. APP.	
							DRAWN		CHECKED		ELEC. DES. APP.	
							DRAWN		CHECKED		MECH. DES. APP.	
							DRAWN		CHECKED		ELEC. DES. APP.	
							DRAWN		CHECKED		MECH. DES. APP.	
							DRAWN		CHECKED		ELEC. DES. APP.	
							DRAWN		CHECKED		MECH. DES. APP.	
							DRAWN		CHECKED		ELEC. DES. APP.	
							DRAWN		CHECKED		MECH. DES. APP.	
							DRAWN		CHECKED		ELEC. DES. APP.	
							DRAWN		CHECKED		MECH. DES. APP.	
							DRAWN		CHECKED		ELEC. DES. APP.	
							DRAWN		CHECKED		MECH. DES. APP.	
							DRAWN		CHECKED		ELEC. DES. APP.	
							DRAWN		CHECKED		MECH. DES. APP.	
							DRAWN		CHECKED		ELEC. DES. APP.	
							DRAWN		CHECKED		MECH. DES. APP.	
							DRAWN		CHECKED		ELEC. DES. APP.	
							DRAWN		CHECKED		MECH. DES. APP.	
							DRAWN		CHECKED		ELEC. DES. APP.	
							DRAWN		CHECKED		MECH. DES. APP.	
							DRAWN		CHECKED		ELEC. DES. APP.	
							DRAWN		CHECKED		MECH. DES. APP.	
							DRAWN		CHECKED		ELEC. DES. APP.	
							DRAWN		CHECKED		MECH. DES. APP.	
							DRAWN		CHECKED		ELEC. DES. APP.	
							DRAWN		CHECKED		MECH. DES. APP.	
							DRAWN		CHECKED		ELEC. DES. APP.	
							DRAWN		CHECKED		MECH. DES. APP.	
							DRAWN		CHECKED		ELEC. DES. APP.	
							DRAWN		CHECKED		MECH. DES. APP.	
							DRAWN		CHECKED		ELEC. DES. APP.	
							DRAWN		CHECKED		MECH. DES. APP.	
							DRAWN		CHECKED		ELEC. DES. APP.	
							DRAWN		CHECKED		MECH. DES. APP.	
							DRAWN		CHECKED		ELEC. DES. APP.	
							DRAWN		CHECKED		MECH. DES. APP.	
							DRAWN		CHECKED		ELEC. DES. APP.	
							DRAWN		CHECKED		MECH. DES. APP.	
							DRAWN		CHECKED		ELEC. DES. APP.	
							DRAWN		CHECKED		MECH. DES. APP.	
							DRAWN		CHECKED		ELEC. DES. APP.	
							DRAWN		CHECKED		MECH. DES. APP.	
							DRAWN		CHECKED		ELEC. DES. APP.	
							DRAWN		CHECKED		MECH. DES. APP.	
							DRAWN		CHECKED		ELEC. DES. APP.	
							DRAWN		CHECKED		MECH. DES. APP.	
							DRAWN		CHECKED		ELEC. DES. APP.	
							DRAWN		CHECKED		MECH. DES. APP.	
							DRAWN		CHECKED		ELEC. DES. APP.	
							DRAWN		CHECKED		MECH. DES. APP.	
							DRAWN		CHECKED		ELEC. DES. APP.	
							DRAWN		CHECKED		MECH. DES. APP.	
							DRAWN		CHECKED		ELEC. DES. APP.	
							DRAWN		CHECKED		MECH. DES. APP.	
							DRAWN		CHECKED		ELEC. DES. APP.	
							DRAWN		CHECKED		MECH. DES. APP.	
							DRAWN		CHECKED		ELEC. DES. APP.	
							DRAWN		CHECKED		MECH. DES. APP.	
							DRAWN		CHECKED		ELEC. DES. APP.	
							DRAWN		CHECKED		MECH. DES. APP.	
							DRAWN		CHECKED		ELEC. DES. APP.	
							DRAWN		CHECKED		MECH. DES. APP.	
							DRAWN		CHECKED		ELEC. DES. APP.	
							DRAWN		CHECKED		MECH. DES. APP.	
							DRAWN		CHECKED		ELEC. DES. APP.	
							DRAWN		CHECKED		MECH. DES. APP.	
							DRAWN		CHECKED		ELEC. DES. APP.	
							DRAWN		CHECKED		MECH. DES. APP.	
							DRAWN		CHECKED		ELEC. DES. APP.	
							DRAWN		CHECKED		MECH. DES. APP.	
							DRAWN		CHECKED		ELEC. DES. APP.	
							DRAWN		CHECKED		MECH. DES. APP.	
							DRAWN		CHECKED		ELEC. DES. APP.	
							DRAWN		CHECKED		MECH. DES. APP.	
							DRAWN		CHECKED		ELEC. DES. APP.	
							DRAWN		CHECKED		MECH. DES. APP.	
							DRAWN		CHECKED		ELEC. DES. APP.	
							DRAWN		CHECKED		MECH. DES. APP.	
							DRAWN		CHECKED		ELEC. DES. APP.	
							DRAWN		CHECKED		MECH. DES. APP.	
							DRAWN		CHECKED		ELEC. DES. APP.	
							DRAWN		CHECKED		MECH. DES. APP.	
							DRAWN		CHECKED		ELEC. DES. APP.	
							DRAWN		CHECKED		MECH. DES. APP.	
							DRAWN		CHECKED		ELEC. DES. APP.	
							DRAWN		CHECKED		MECH. DES. APP.	
							DRAWN		CHECKED		ELEC. DES. APP.	
							DRAWN		CHECKED		MECH. DES. APP.	
							DRAWN		CHECKED		ELEC. DES. APP.	
							DRAWN		CHECKED		MECH. DES. APP.	
							DRAWN		CHECKED		ELEC. DES. APP.	
							DRAWN		CHECKED		MECH. DES. APP.	
							DRAWN		CHECKED		ELEC. DES. APP.	
							DRAWN		CHECKED		MECH. DES. APP.	
							DRAWN		CHECKED		ELEC. DES. APP.	
							DRAWN		CHECKED		MECH. DES. APP.	
							DRAWN		CHECKED		ELEC. DES. APP.	
							DRAWN		CHECKED		MECH. DES. APP.	
							DRAWN		CHECKED		ELEC. DES. APP.	
							DRAWN		CHECKED		MECH. DES. APP.	
							DRAWN		CHECKED		ELEC. DES. APP.	
							DRAWN		CHECKED		MECH. DES. APP.	
							DRAWN		CHECKED		ELEC. DES. APP.	
							DRAWN					

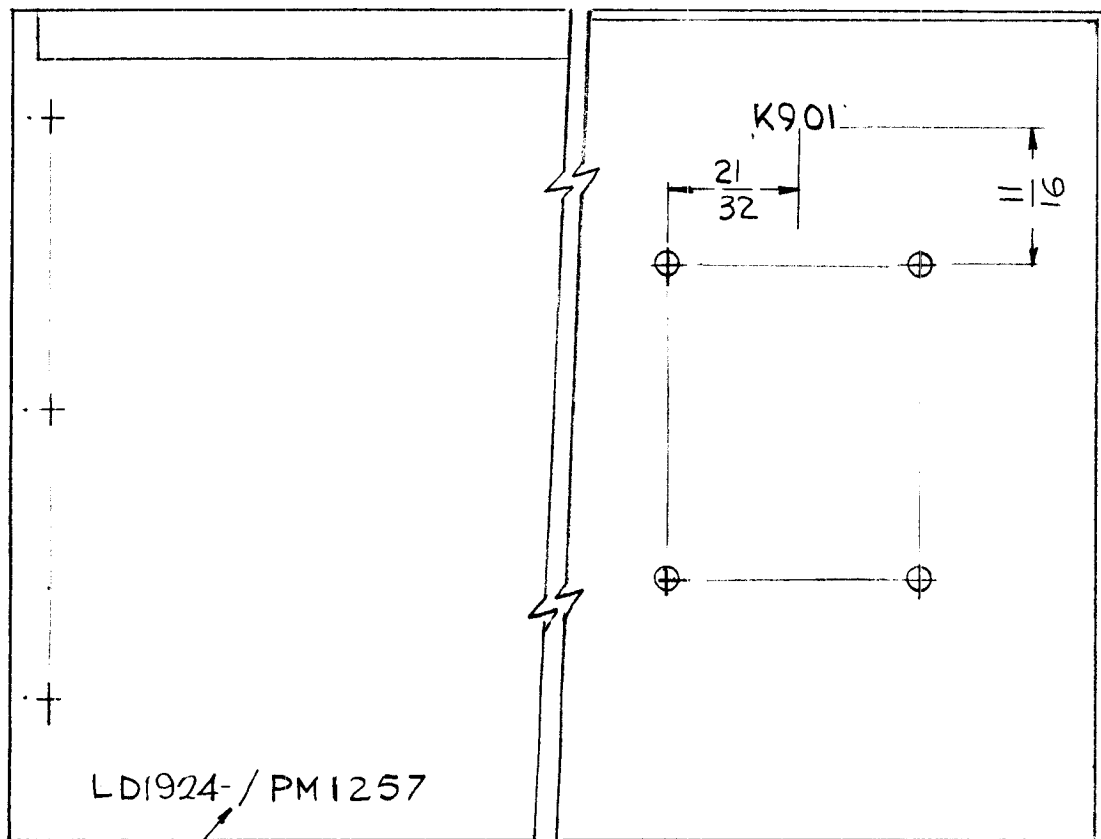




MARKING PROCESS: AS PER TMC SPECIFICATION S-727.

REQ. PER UNIT	USED ON			LD1924	Ø
	MODEL	ASS'Y. NO.	DATE		
1	TST-10K		6-8-65		

LETTERING: 1/8 HIGH BLACK GOTHIC, LOCATED AS SHOWN.



LD1924-PM1257

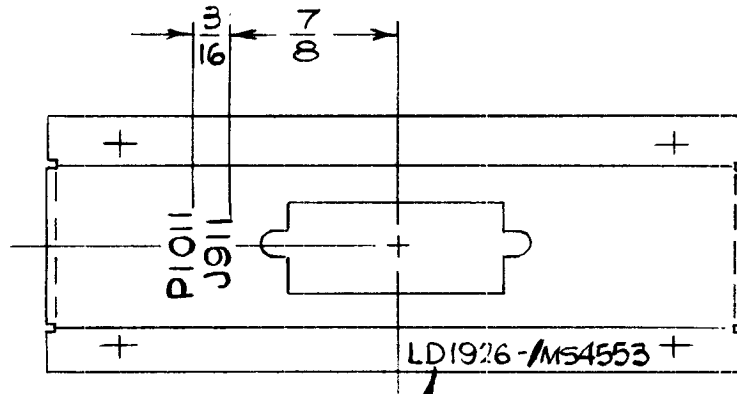
MARK TMC P/NO WITH LATEST REV. LETTER

REF: PM1257

REQ.	ITEM	PART NO.		DESCRIPTION			SYMBOL
				THE TECHNICAL MATERIEL CORP. MAMARONECK. NEW YORK			
		STOCK SIZE		MARKING, PLATE, SIDE, LEFT			
Ø	ORIGINAL RELEASE FOR PRODUCTION	5/3/67	CV	CV			
SYM	DESCRIPTION	DATE	CH. NO.	DRAFTS	CHECKER	ENG. APP.	
UNLESS OTHERWISE SPECIFIED DIMENSIONS ARE IN INCHES AND INCLUDE CHEMICALLY APPLIED OR PLATED FINISHES		SCALE		1:1			
DECIMALS .X ± .05 .XX ± .01 .XXX ± .005		FRACTIONS ± 1/64 ANGLES ± 0° 30'		TOLERANCES		CODE	
		A					
		TYPE & TEMPER		HEAT TREAT. SPEC.		DRAWN	CHECKED
						G.D.L.	
						aq	
		FINISH & SPEC. NO.		ELEC. DES. APP.		MECH. DES. APP.	
						LD1924 Ø	



REQ. PER UNIT	USED ON			LD1926 Ø
	MODEL	ASS'Y. NO.	DATE	
1	TSTE-10K		6-8-65	



MARK TMC PART NO. W/LATEST REV. LETTERS

MARKING PROCESS: AS PER TMC SPECIFICATION S-727.

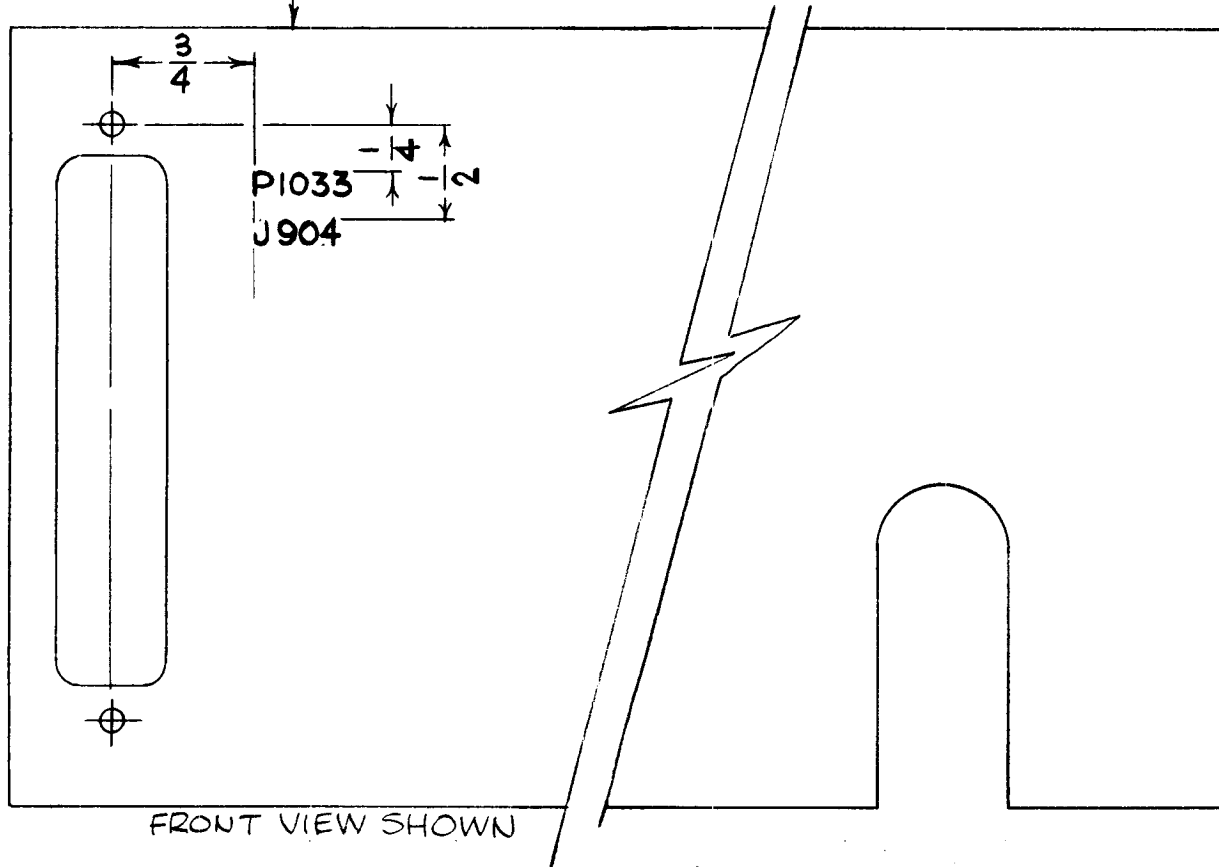
LETTERING: 1/8 HIGH BLACK GOTHIC, LOCATED AS SHOWN.

REF.: MS4553

REQ.	ITEM	PART NO.	DESCRIPTION				SYMBOL
			THE TECHNICAL MATERIEL CORP. MAMARONECK. NEW YORK				
			MARKING, BRACKET MFG.				
			CONNECTOR				
Ø	ORIG. RELEASE FOR PRD.	5-5-61	Ø	RG			
SYM	DESCRIPTION	DATE	CH. NO.	DRAFTS	CHECKER	ENG. APP.	
UNLESS OTHERWISE SPECIFIED DIMENSIONS ARE IN INCHES AND INCLUDE CHEMICALLY APPLIED OR PLATED FINISHES		SCALE	1:1				
DECIMALS .X ± .05 .XX ± .01 .XXX ± .005	TOLERANCES	FRACTIONS ± 1/64 ANGLES ± 0° 30'	CODE				
					H. AUSTIN		
					DRAWN	CHECKED	
						FINAL APPROVAL	
						LD1926 Ø	
					ELEC. DES. APP.	MECH. DES. APP.	

REQ. PER UNIT	USED ON			LD1927 Ø
	MODEL	ASS'Y. NO.	DATE	
1	TSTE 10K		6-8-65	

MARK TMC PT. NO. W/LATEST REV. LETTERS ON REAR



FRONT VIEW SHOWN

MARKING PROCESS: AS PER TMC SPECIFICATION S-727.

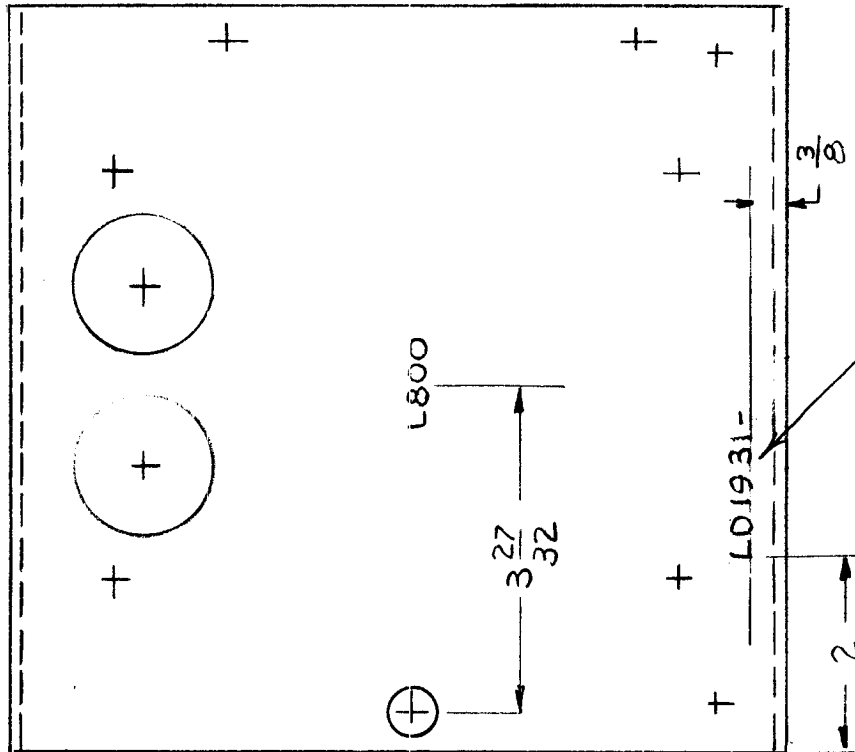
LETTERING: 1/8 HIGH BLACK GOTHIC, LOCATED AS SHOWN.

REF.: PM1178

REQ.	ITEM	PART NO.	DESCRIPTION				SYMBOL
			THE TECHNICAL MATERIEL CORP. MAMARONECK. NEW YORK				
			STOCK SIZE				
			MARKING, PLATE, FRONT				
			MATERIAL				
Ø	ORIG. RELEASE FOR PRO	55-67	Ø	RG			
SYM	DESCRIPTION	DATE	CH. NO.	DRAFTS	CHECKER	ENG. APP.	
UNLESS OTHERWISE SPECIFIED DIMENSIONS ARE IN INCHES AND INCLUDE CHEMICALLY APPLIED OR PLATED FINISHES		SCALE 1:1					
DECIMALS .X ± .05 .XX ± .01 .XXX ± .005		FRACTIONS ± 1/64 ANGLES ± 0° 30'		TOLERANCES		CODE	
TYPE & TEMPER		HEAT TREAT. SPEC.		DRAWN H. AUSTIN		CHECKED [Signature]	
FINISH & SPEC. NO.		ELEC. DES. APP.		MECH. DES. APP.		FINAL APPROVAL [Signature]	
				aa		LD1927 Ø	



REQ. PER UNIT	USED ON			LD1931 $\emptyset$
	MODEL	ASS'Y. NO.	DATE	
1	TSTE-10K		6-8-65	



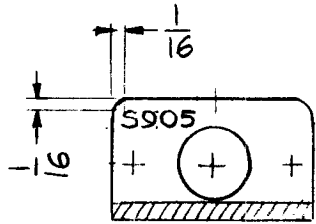
MARKING PROCESS: AS PER TMC SPECIFICATION S-727.

LETTERING: 1/8 HIGH BLACK GOTHIC, LOCATED AS SHOWN.

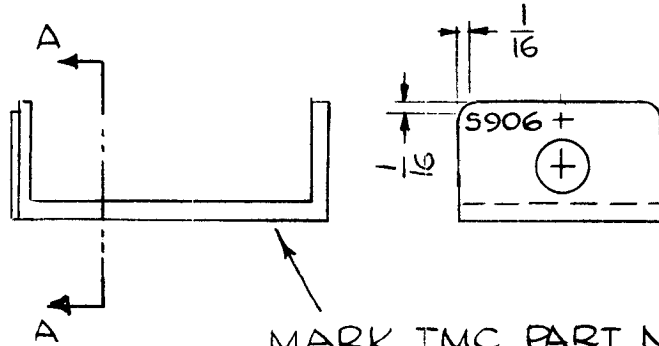
REF: MS4612

							REQ. ITEM	PART NO.	FBUDETT1	DESCRIPTION	SYMBOL	
							STOCK SIZE		THE TECHNICAL MATERIEL CORP. MAMARONECK. NEW YORK			
							MATERIAL		MARKING, PLATE, MTG. XFMR			
$\emptyset$	ORIGINAL RELEASE FOR PRODUCTION	5/17/66	$\emptyset$	CV								
SYM	DESCRIPTION	DATE	CH. NO.	DRAFTS	CHECKER	ENG. APP.						
UNLESS OTHERWISE SPECIFIED DIMENSIONS ARE IN INCHES AND INCLUDE CHEMICALLY APPLIED OR PLATED FINISHES		SCALE		1:2			TYPE & TEMPER		HEAT TREAT. SPEC.	G. D. L.	2.13	
DECIMALS .X $\pm$ .05 .XX $\pm$ .01 .XXX $\pm$ .005		FRACTIONS $\pm$ 1/64 ANGLES $\pm$ 0° 30'		TOLERANCES		CODE A	FINISH & SPEC. NO.		ELEC. DES. APP.	MECH. DES. APP.	LD1931	$\emptyset$
									5-13-66			
									HL			

REQ. PER UNIT	USED ON			LD1935 Ø
	MODEL	ASS'Y. NO.	DATE	
1	TSTE-10K		6-8-65	



SECTION A-A



MARK TMC PART NO. (LD1935-) W/LATEST REVISION LETTER.

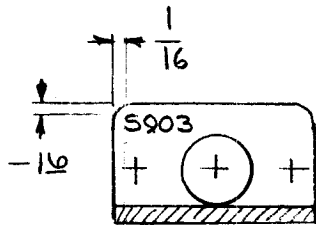
MARKING PROCESS: AS PER TMC SPECIFICATION S-727.

LETTERING: 3/32 HIGH BLACK GOTHIC, LOCATED AS SHOWN.

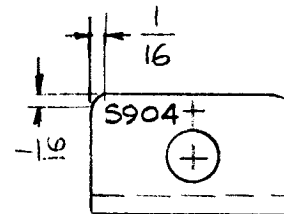
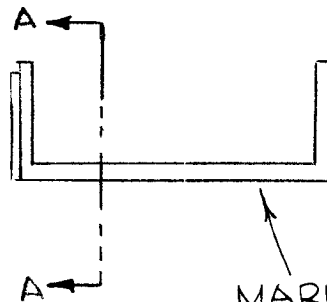
REF: PM1218

REQ.	ITEM	PART NO.					DESCRIPTION			SYMBOL	
							THE TECHNICAL MATERIEL CORP. MAMARONECK, NEW YORK				
		STOCK SIZE					MARKING, HOUSING, SWITCH				
Ø	ORIGINAL RELEASE FOR PRODUCTION	6.7.66	#	WTV							
SYM	DESCRIPTION	DATE	CH. NO.	DRAFTS	CHECKER	ENG. APP.	MATERIAL				
UNLESS OTHERWISE SPECIFIED DIMENSIONS ARE IN INCHES AND INCLUDE CHEMICALLY APPLIED OR PLATED FINISHES		SCALE		1:1			G.D.L.	CB	P.R. [Signature]		
							TYPE & TEMPER	HEAT TREAT. SPEC.	DRAWN	CHECKED	FINAL APPROVAL
DECIMALS .X ± .05 .XX ± .01 .XXX ± .005	TOLERANCES	FRACTIONS ± 1/64 ANGLES ± 0° 30'	CODE A				FINISH & SPEC. NO.		ELEC. DES. APP.	MECH. DES. APP.	LD1935 Ø

REQ. PER UNIT	USED ON			LD1936 Ø
	MODEL	ASS'Y. NO.	DATE	
	TSTE-10K		6-8-65	



SECTION A-A



MARK TMC PART  
NO (LD1936-) W/  
LATEST REV. LETTER

MARKING PROCESS: AS PER TMC SPECIFICATION S-727.

LETTERING: 3/32 HIGH BLACK GOTHIC, LOCATED AS SHOWN.

REF: PM1218

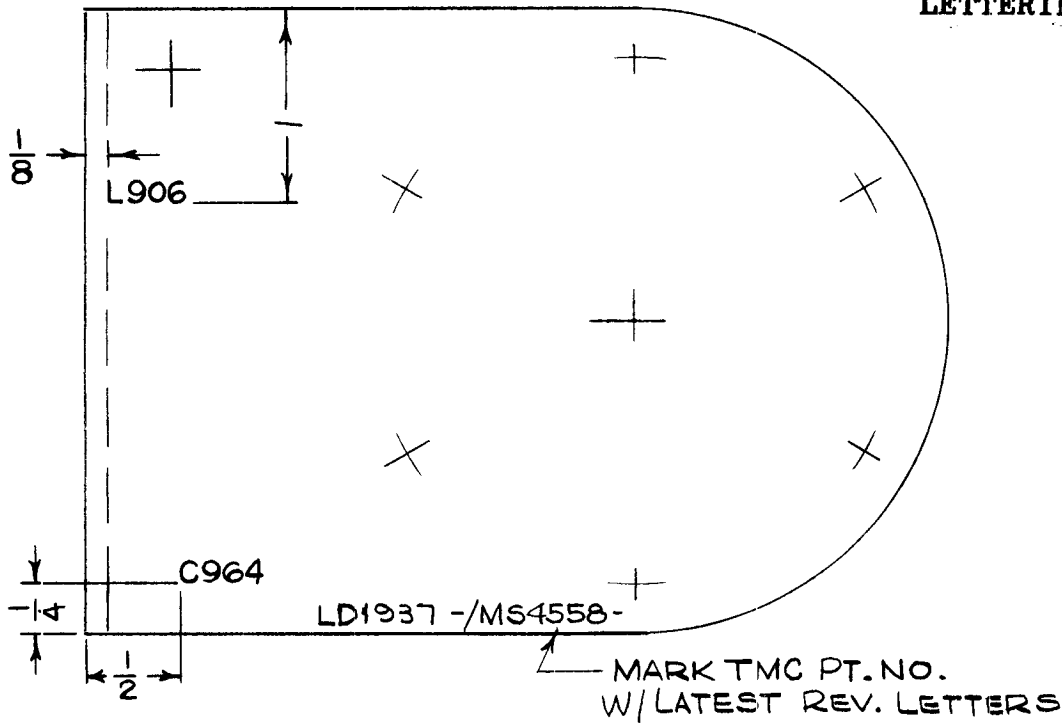
REQ.	ITEM	PART NO.					DESCRIPTION			SYMBOL		
							THE TECHNICAL MATERIEL CORP. MAMARONECK. NEW YORK					
		STOCK SIZE					MARKING, HOUSING, SWITCH					
		MATERIAL										
Ø	ORIGINAL RELEASE FOR PRODUCTION	6.7.66	#	left			G.D.L.	CB	2.B	ML		
SYM	DESCRIPTION	DATE	CH. NO.	DRAFTS	CHECKER	ENG. APP.	TYPE & TEMPER	HEAT TREAT. SPEC.	DRAWN	CHECKED	FINAL APPROVAL	
	UNLESS OTHERWISE SPECIFIED DIMENSIONS ARE IN INCHES AND INCLUDE CHEMICALLY APPLIED OR PLATED FINISHES	SCALE 1:1										
	DECIMALS .X ± .05 .XX ± .01 .XXX ± .005	TOLERANCES		FRACTIONS ± 1/64 ANGLES ± 0° 30'	CODE A				a. q.		LD1936 Ø	
							FINISH & SPEC. NO.		ELEC. DES. APP.	MECH. DES. APP.		



REQ. PER UNIT	USED ON			LD1937 $\emptyset$
	MODEL	ASS'Y. NO.	DATE	
1	TST( )10K		6-9-65	

MARKING PROCESS: AS PER TMC SPECIFICATION S-727.

LETTERING: 1/8 HIGH BLACK GOTHIC, LOCATED AS SHOWN.

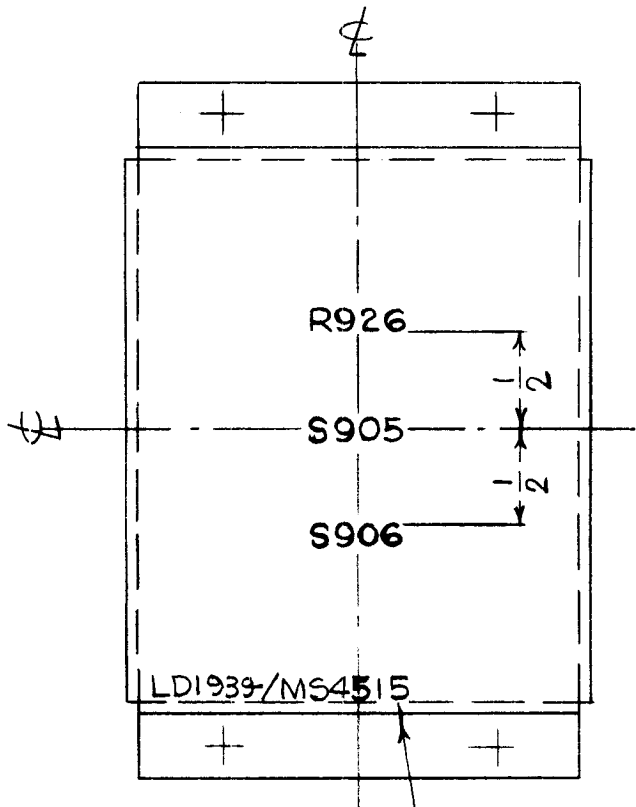


REF. : MS4558

REQ.	ITEM	PART NO.	DESCRIPTION			SYMBOL
			THE TECHNICAL MATERIEL CORP. MAMARONECK. NEW YORK			
			MARKING, PLATE, MTG., CAP.			
$\emptyset$	ORIGINAL RELEASE FOR PRODUCTION	5/9/67	$\emptyset$	CV		
SYM	DESCRIPTION	DATE	CH. NO.	DRAFTS	CHECKER	ENG. APP.
UNLESS OTHERWISE SPECIFIED DIMENSIONS ARE IN INCHES AND INCLUDE CHEMICALLY APPLIED OR PLATED FINISHES		SCALE		1:1		
DECIMALS .X $\pm$ .05 .XX $\pm$ .01 .XXX $\pm$ .005		FRACTIONS $\pm$ 1/64 ANGLES $\pm$ 0° 30'		TOLERANCES		CODE
TYPE & TEMPER		HEAT TREAT. SPEC.		DRAWN		CHECKED
FINISH & SPEC. NO.		ELEC. DES. APP.		MECH. DES. APP.		
				H. AUSTIN 6-9-65		LD1937 $\emptyset$



REQ. PER UNIT	USED ON			LD1939 Ø
	MODEL	ASS'Y. NO.	DATE	
1	TSTE-10K		6-8-65	



MARKING PROCESS: AS PER TMC SPECIFICATION S-727.

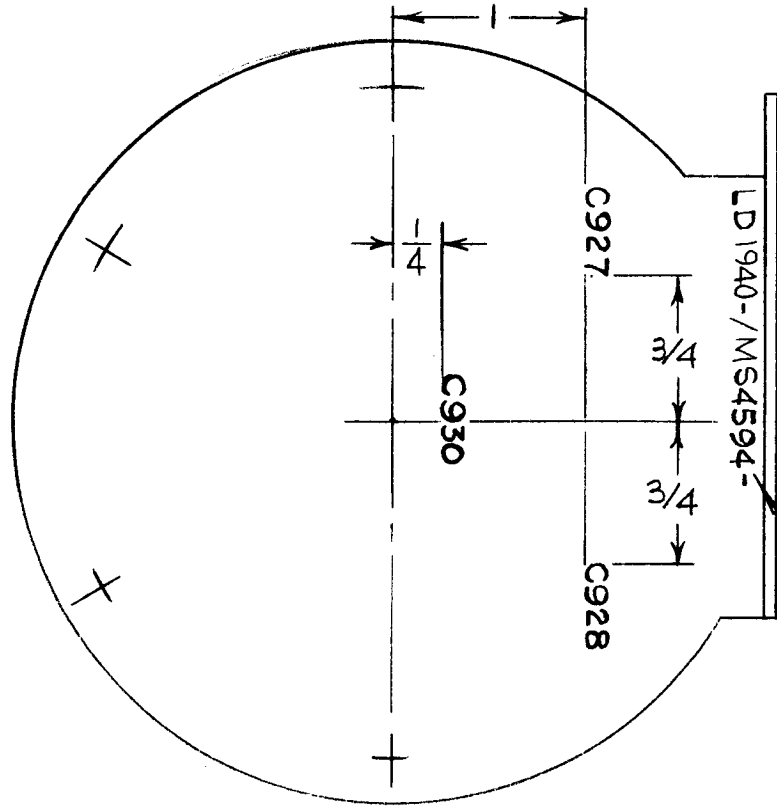
LETTERING: 1/8 HIGH BLACK GOTHIC, LOCATED AS SHOWN.

MARK TMC PT NO.  
W/LATEST REV. LETTERS

REF.: MS4515

							REQ. ITEM	PART NO.	DESCRIPTION	SYMBOL		
									THE TECHNICAL MATERIEL CORP. MAMARONECK, NEW YORK			
							STOCK SIZE		MARKING, SHIELD, RF			
							MATERIAL					
Ø	ORIG. RELEASE FOR PPOD.	5-5-67	Ø	R.G.				H. AUSTIN	<i>[Signature]</i>			
SYM	DESCRIPTION	DATE	CH. NO.	DRAFTS	CHECKER	ENG. APP.	MATERIAL					
UNLESS OTHERWISE SPECIFIED DIMENSIONS ARE IN INCHES AND INCLUDE CHEMICALLY APPLIED OR PLATED FINISHES		SCALE					TYPE & TEMPER		HEAT TREAT. SPEC.	DRAWN	CHECKED	FINAL APPROVAL
		1:1								aca	RT	LD1939 Ø
DECIMALS .X ± .05 .XX ± .01 .XXX ± .005	TOLERANCES	FRACTIONS ± 1/64 ANGLES ± 0° 30'	CODE				FINISH & SPEC. NO.		ELEC. DES. APP.	MECH. DES. APP.		

REQ. PER UNIT	USED ON			LD1940 $\emptyset$
	MODEL	ASS'Y. NO.	DATE	
1	TSTE-10K		6-8-65	



MARKING PROCESS: AS PER TMC SPECIFICATION S-727.  
 LETTERING: 1/8 HIGH BLACK GOTHIC, LOCATED AS SHOWN.

MARK TMC PT. NO.  
 W/LATEST REV. LETTERS

REF. : MS4594

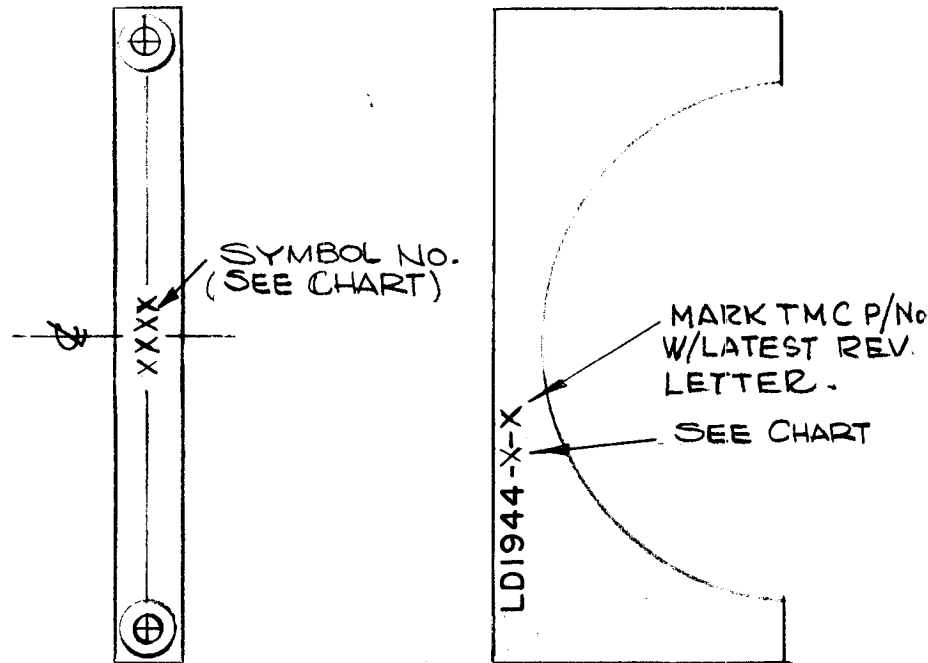
REQ. ITEM	PART NO.	DESCRIPTION	SYMBOL
		THE TECHNICAL MATERIEL CORP. MAMARONECK. NEW YORK	
		MARKING, BRACKET, CONNECTING	
$\emptyset$	ORIGINAL RELEASE FOR PRODUCTION	5/3/67	$\emptyset$ CV <i>JCB</i>
SYM	DESCRIPTION	DATE	CH. NO. DRAFTS CHECKER ENG. APP.
UNLESS OTHERWISE SPECIFIED DIMENSIONS ARE IN INCHES AND INCLUDE CHEMICALLY APPLIED OR PLATED FINISHES		SCALE	1:1
DECIMALS: .X $\pm$ .05 .XX $\pm$ .01 .XXX $\pm$ .005	TOLERANCES	FRACTIONS $\pm$ 1/64 ANGLES $\pm$ 0° 30'	CODE
		HAUSTIN	JCB
		DRAWN	CHECKED
		29	<i>205/11/67</i>
			LD1940 $\emptyset$
		ELEC. DES. APP.	MECH. DES. APP.



REQ. PER UNIT SEE CHART	USED ON			LD1944	A
	MODEL	ASS'Y. NO.	DATE		
	SEE CHART	<del>4</del>	<del>4</del>		

MARKING PROCESS: AS PER TMC SPECIFICATION S-727.

LETTERING: 1/8 HIGH BLACK GOTHIC, LOCATED AS SHOWN.

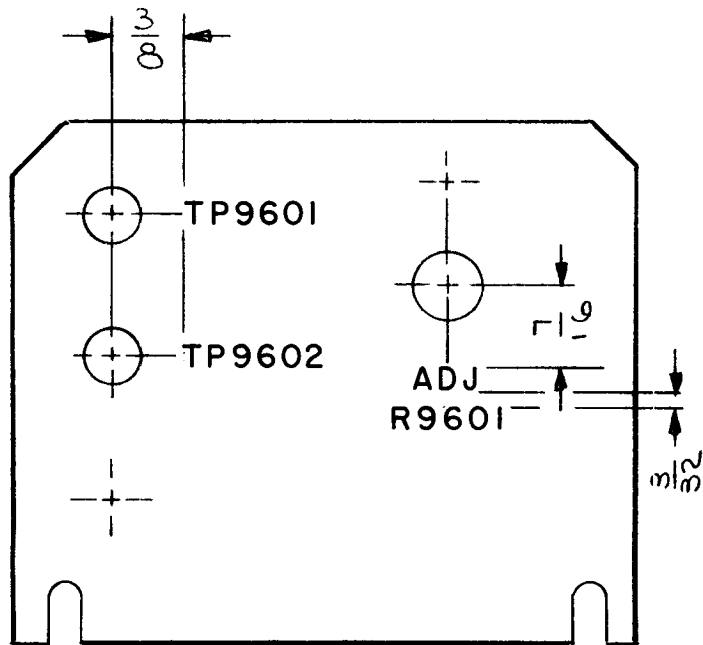


TMC P/NO.	SYMBOL NO.	MODEL
LD1944-1	C299	RFTA-1
↑ -2	C300	RFTA-1
↓ -3	C2081	TLAA-2.5K TLAB-2.5K
LD1944-4	C2089	TLAA-2.5K TLAB-2.5K

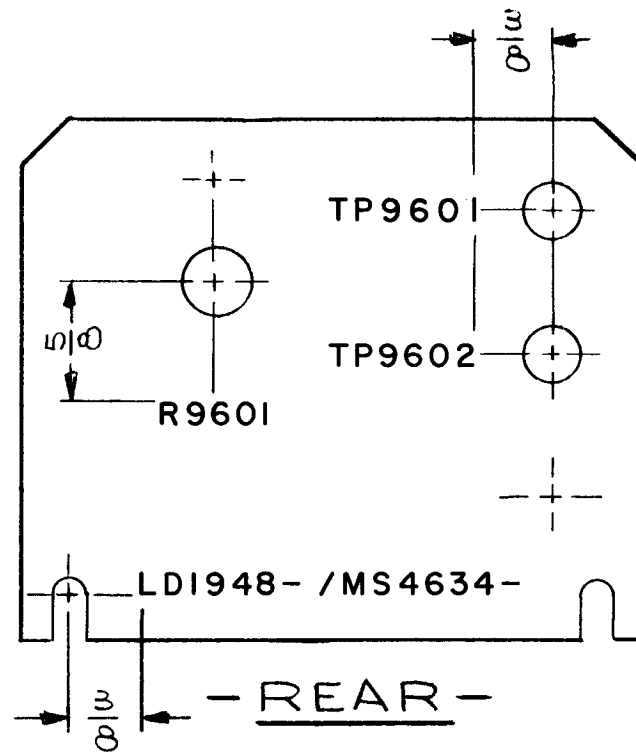
REF: PM1229

REQ. ITEM	PART NO.	DESCRIPTION	SYMBOL
		THE TECHNICAL MATERIEL CORP. MAMARONECK. NEW YORK	
A	ADD P/N CHART	10-13-66 17032 NLA	
Ø	ORIGINAL RELEASE FOR PRODUCTION	6.7.66 # LHW	
SYM	DESCRIPTION	DATE CH. NO. DRAFTS CHECKER ENG. APP.	
UNLESS OTHERWISE SPECIFIED DIMENSIONS ARE IN INCHES AND INCLUDE CHEMICALLY APPLIED OR PLATED FINISHES		SCALE 1:1	
DECIMALS .X ± .05 .XX ± .01 .XXX ± .005	TOLERANCES	FRACTIONS ± 1/64 ANGLES ± 0° 30'	CODE A
FINISH & SPEC. NO.		ELEC. DES. APP.	MECH. DES. APP.
		GDL	LD1944 A
		DRAWN	
		CHECKED	
		FINAL APPROVAL	

REQ. PER UNIT	USED ON			LD1948 $\emptyset$
	MODEL	ASS'Y. NO.	DATE	
1	RAK-22B		6/17/65	



- FRONT -



- REAR -

- UNLESS OTHERWISE SPECIFIED -

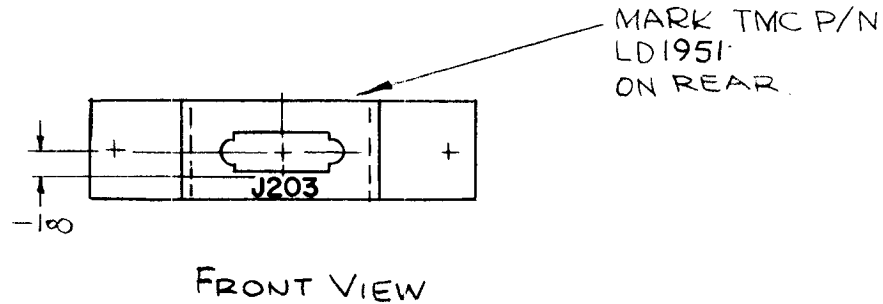
1- MARKING PROCESS: AS PER TMC SPECIFICATION S-727.

2- LETTERING: 1/8 HIGH BLACK GOTHIC, LOCATED AS SHOWN.

REF.: MS4634

REQ.	ITEM	PART NO.	F. E. EATON DESCRIPTION				SYMBOL	
			THE TECHNICAL MATERIEL CORP. MAMARONECK, NEW YORK					
			MARKING- MTG BRACKET, RESISTOR					
			MATERIAL					
			TYPE & TEMPER	HEAT TREAT. SPEC.	DRAWN	CHECKED	FINAL APPROVAL	
					JL	JCS	F. E. Eaton 6/29/65	
			FINISH & SPEC. NO.		ELEC. DES. APP.	MECH. DES. APP.	LD1948 $\emptyset$	
UNLESS OTHERWISE SPECIFIED DIMENSIONS ARE IN INCHES AND INCLUDE CHEMICALLY APPLIED OR PLATED FINISHES		SCALE						
DECIMALS .X $\pm$ .05 .XX $\pm$ .01 .XXX $\pm$ .005		FRACTIONS $\pm$ 1/64 ANGLES $\pm$ 0° 30'	CODE					
TOLERANCES								

REQ. PER UNIT	USED ON			LD1951	Ø
	MODEL	ASS'Y. NO.	DATE		
1	RFTA-1		6-15-65		



MARKING PROCESS: AS PER TMC SPECIFICATION S-727.

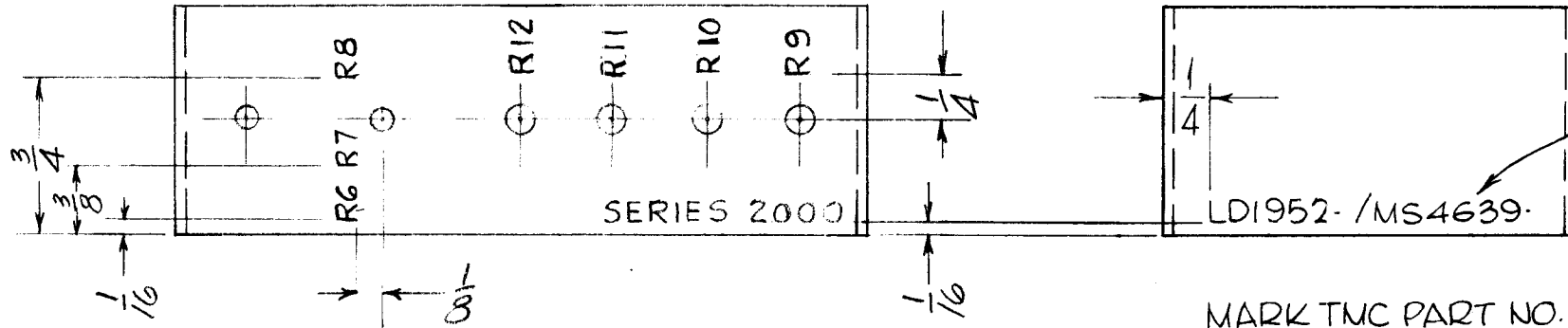
LETTERING: 3/32 HIGH BLACK GOTHIC, LOCATED AS SHOWN.

REF: MS4636

REQ.	ITEM	PART NO.	F. BUDETTI DESCRIPTION				SYMB L
			<b>THE TECHNICAL MATERIEL CORP.</b> MAMARONECK. NEW YORK				
Ø	ORIGINAL RELEASE	2/15/66	Ø				
XI	MS4636 DELETED FROM TMC PART NO.	2-9-66	-A	Jc			
SYM	DESCRIPTION	DATE	CH. NO.	DRAFTS	CHECKER	ENG. APP.	
UNLESS OTHERWISE SPECIFIED DIMENSIONS ARE IN INCHES AND INCLUDE CHEMICALLY APPLIED OR PLATED FINISHES		SCALE	1:1				
DECIMALS .X ± .05 .XX ± .01 .XXX ± .005		FRACTIONS ± 1/64 ANGLES ± 0° 30'		CODE	A		
TOLERANCES							
		TYPE & TEMPER		HEAT TREAT. SPEC.		DRAWN	CHECKED
						M/L	JCB
						AA	M/May
		FINISH & SPEC. NO.		ELEC. DES. APP.		MECH. DES. APP.	LD1951
							Ø



REQ. PER UNIT	USED ON			LD1952   Ø
	MODEL	ASS'Y. NO.	DATE	
8	LRCC-1		6-22-65	



MARK TMC PART NO.  
1/8 HIGH BLACK  
GOTHIC, W/LATEST  
REVISION LETTERS.

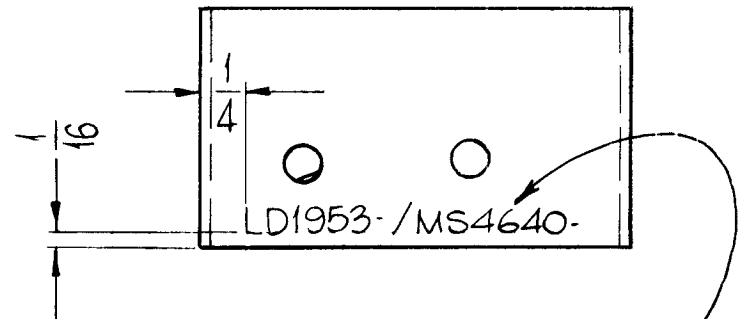
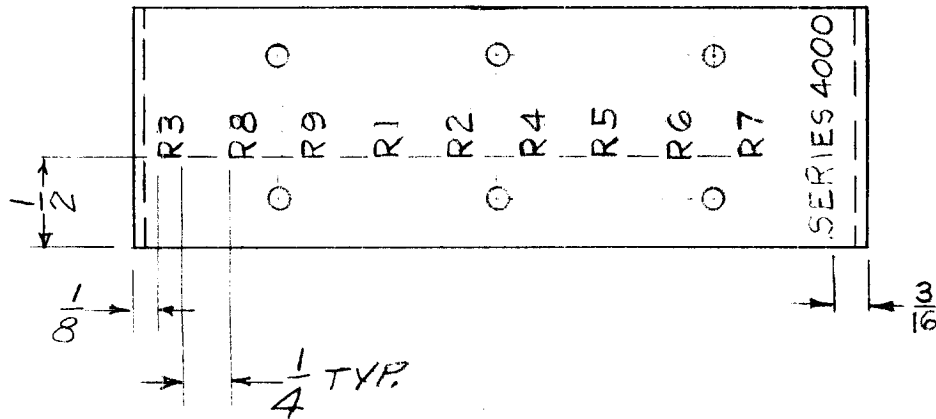
MARKING PROCESS: AS PER TMC SPECIFICATION S-727.

LETTERING: 1/8 HIGH BLACK GOTHIC, LOCATED AS SHOWN.

REF-MS4639

							REQ. ITEM	PART NO.	ZETENA	DESCRIPTION	SYMBOL		
									THE TECHNICAL MATERIEL CORP. MAMARONECK. NEW YORK				
									MARKING, RESISTOR, MTG. BRKT				
Ø	ORIGINAL RELEASE FOR PRODUCTION	622-65	<del>11</del>	JC					MARKING PROCESS: PER TMC SPEC. S727				
SYM	DESCRIPTION	DATE	CH. NO.	DRAFTS	CHECKER	ENG. APP.							
UNLESS OTHERWISE SPECIFIED DIMENSIONS ARE IN INCHES AND INCLUDE CHEMICALLY APPLIED OR PLATED FINISHES		SCALE								DC	<i>QCB</i>	<i>J.E. Co. 6/22/65</i>	
									TYPE & TEMPER	HEAT TREAT. SPEC.	DRAWN	CHECKED	FINAL APPROVAL
DECIMALS .X ± .05 .XX ± .01 .XXX ± .005	TOLERANCES	FRACTIONS ± 1/64 ANGLES ± 0° 30'	CODE										
									FINISH & SPEC. NO.	ELEC. DES. APP.	MECH. DES. APP.	LD1952   Ø	

REQ. PER UNIT	USED ON			LD1953 B
	MODEL	ASS'Y. NO.	DATE	
6	LRCM-1	AX568	6-22-65	



MARK TMC PART NO.  
1/8 HIGH BLACK  
GOTHIC, W/LATEST  
REVISION LETTERS.

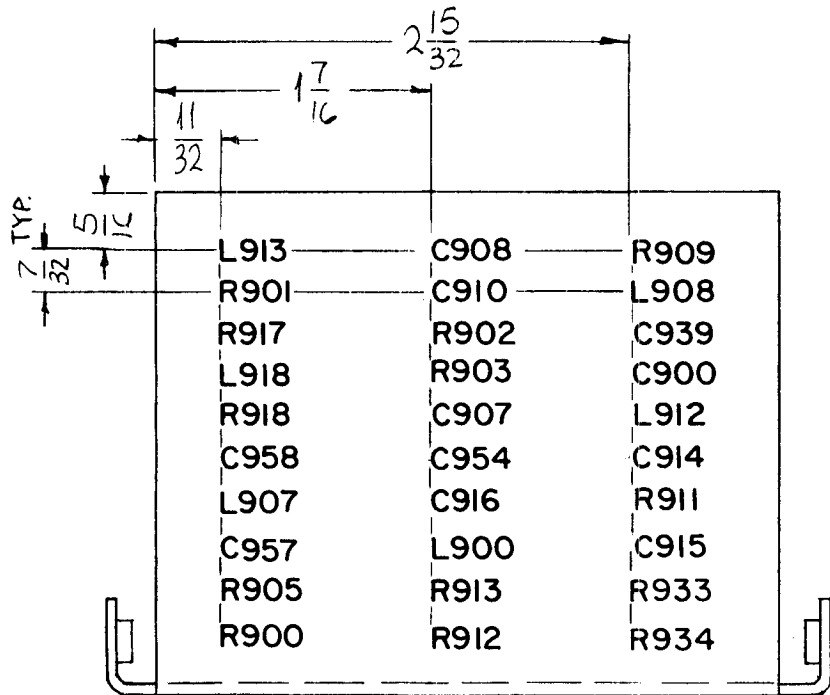
MARKING PROCESS: AS PER TMC SPECIFICATION S-727.

LETTERING: 1/8 HIGH BLACK GOTHIC, LOCATED AS SHOWN.

REF-MS4640

							REQ. ITEM	PART NO.	ZETENA	DESCRIPTION	SYMBOL	
B	QTY & ASSY NO. ADDED	10/1/65	14959	DKV.	JL	JL			THE TECHNICAL MATERIEL CORP. MAMARONECK, NEW YORK			
A	SERIES 4000 ADDED	7/14/65	14458	DKV.	JL	JL		STOCK SIZE	MARKING, RESISTOR, MTG BRKT			
Ø	ORIGINAL RELEASE FOR PRODUCTION	6-22-65	AA	JC				MATERIAL	MARKING PROCESS: PER TMC SPEC S727			
SYM	DESCRIPTION	DATE	CH. NO.	DRAFTS	CHECKER	ENG. APP.			DC	JL	JL	
UNLESS OTHERWISE SPECIFIED DIMENSIONS ARE IN INCHES AND INCLUDE CHEMICALLY APPLIED OR PLATED FINISHES		SCALE						TYPE & TEMPER	HEAT TREAT. SPEC.	DRAWN	CHECKED	FINAL APPROVAL
DECIMALS .X ± .05 .XX ± .01 .XXX ± .005	TOLERANCES	FRACTIONS ± 1/64 ANGLES ± 0° 30'	CODE									
							FINISH & SPEC. NO.		ELEC. DES. APP.	MECH. DES. APP.	LD1953 B	

REQ. PER UNIT	USED ON			LD1955	Ø
	MODEL	ASS'Y. NO.	DATE		
1	TST-10K		6-29-65		



MARK TMC PART NO.  
(LD1955-)  
1/8 HIGH GOTHIC  
W/LATEST REV.

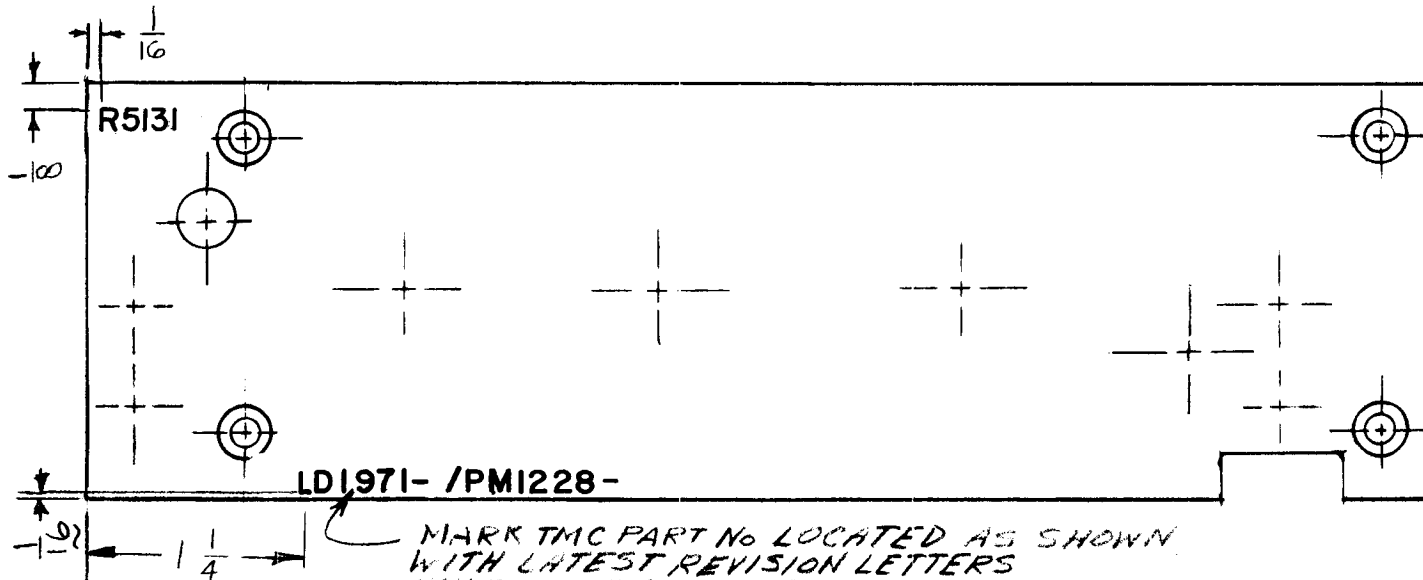
MARKING PROCESS: AS PER TMC SPECIFICATION S-727.

LETTERING: 1/8 HIGH BLACK GOTHIC, LOCATED AS SHOWN.

REF: MS 4586

							REQ. ITEM	PART NO.	F. BUDETTI	DESCRIPTION	SYMBOL
Ø	ORIGINAL RELEASE FOR PRODUCTION	3-3-66	m	Jc	<i>[Signature]</i>	<i>[Signature]</i>				THE TECHNICAL MATERIEL CORP. MAMARONECK. NEW YORK	
X2	MS4586 DELETED FROM TMC PART NO	2-4-66	m	Jc				STOCK SIZE		MARKING, SHIELD RF	
X1	R 933, 934 ADDED	9-21-65	X1	<i>[Signature]</i>	<i>[Signature]</i>	<i>[Signature]</i>				MARKING PROCESS: AS PER TMC SPEC. S727	
SYM	DESCRIPTION	DATE	CH. NO.	DRAFTS	CHECKER	ENG. APP.	MATERIAL				
UNLESS OTHERWISE SPECIFIED DIMENSIONS ARE IN INCHES AND INCLUDE CHEMICALLY APPLIED OR PLATED FINISHES		SCALE		1:1			TYPE & TEMPER	HEAT TREAT. SPEC.	<i>[Signature]</i>	<i>[Signature]</i>	<i>[Signature]</i>
DECIMALS .X ± .05 .XX ± .01 .XXX ± .005	TOLERANCES	FRACTIONS ± 1/64 ANGLES ± 0° 30'	CODE				FINISH & SPEC. NO.			<i>[Signature]</i>	LD1955
								ELEC. DES. APP.	MECH. DES. APP.		Ø

REQ. PER UNIT	USED ON			LD1971	A
	MODEL	ASS'Y. NO.	DATE		
1	AFCR-3	A5007	7/20/65		

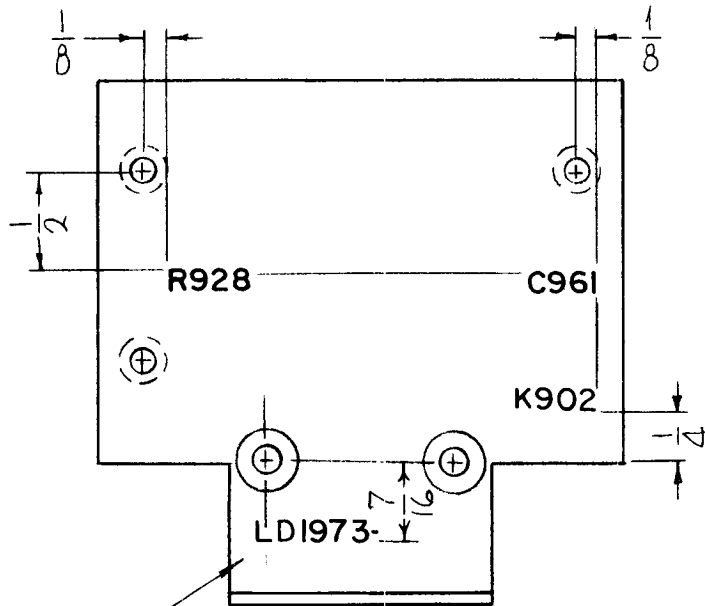


MARKING PROCESS: AS PER TMC SPECIFICATION S-727.

LETTERING: 1/8 HIGH BLACK GOTHIC, LOCATED AS SHOWN. REF. PM 1228

REQ.	ITEM	PART NO.	POSE	DESCRIPTION	SYMBOL	
				THE TECHNICAL MATERIEL CORP. MAMARONECK. NEW YORK		
				MARKING, REAR GEAR PLATE		
A	R5131 WAS R5010	11/30/65	15286	REV. JCB		
	ORIGINAL REVISION FOR PRODUCTION	7/21/65		REV. JCB		
SYM	DESCRIPTION	DATE	CH. NO.	DRAFTS	CHECKER	ENG. APP.
UNLESS OTHERWISE SPECIFIED DIMENSIONS ARE IN INCHES AND INCLUDE CHEMICALLY APPLIED OR PLATED FINISHES		SCALE				
DECIMALS .X ± .05 .XX ± .01 .XXX ± .005		FRACTIONS ± 1/64 ANGLES ± 0° 30'		TOLERANCES		
TYPE & TEMPER		HEAT TREAT. SPEC.		FINISH & SPEC. NO.		
D. VENEZIAN		JCB		MAMARONECK 7/20/65		
DRAWN		CHECKED		FINAL APPROVAL		
				LD1971 A		
ELEC. DES. APP.		MECH. DES. APP.				

REQ. PER UNIT	USED ON			LD1973	Ø
	MODEL	ASS'Y. NO.	DATE		
1	TST-10K		7-22-65		



MARK TMC P/N  
1/8 HIGH GOTHIC  
W/LATEST REV.  
LETTER.

MARKING PROCESS: AS PER TMC SPECIFICATION S-727.

LETTERING: 1/8 HIGH BLACK GOTHIC, LOCATED AS SHOWN.

REF: MS 4687.

SYM	DESCRIPTION	DATE	CH. NO.	DRAFTS	CHECKER	ENG. APP.	REQ. ITEM	PART NO.	F. BUDETTI DESCRIPTION	SYMBOL			
Ø	ORIGINAL RELEASE	2/14/66	Ø			<i>fd</i>			THE TECHNICAL MATERIEL CORP. MAMARONECK. NEW YORK				
XI	MS4687 DELETED FROM TMC PART NO.	2/9/66	<del>AA</del>	Jc					MARKING, BRKT, MTG. COMPONENTS				
									MARKING PROCESS: AS PER TMC SPEC. ST27				
	UNLESS OTHERWISE SPECIFIED DIMENSIONS ARE IN INCHES AND INCLUDE CHEMICALLY APPLIED OR PLATED FINISHES	SCALE	1:1						<i>spz</i>	<i>JCB</i>	<i>M. H. Key</i>		
	DECIMALS .X ± .05 .XX ± .01 .XXX ± .005	FRACTIONS ± 1/64 ANGLES ± 0° 30'	CODE	A					TYPE & TEMPER	HEAT TREAT. SPEC.	DRAWN	CHECKED	FINAL APPROVAL
	TOLERANCES										<i>aa</i>		LD1973 Ø
								FINISH & SPEC. NO.	ELEC. DES. APP.	MECH. DES. APP.			

