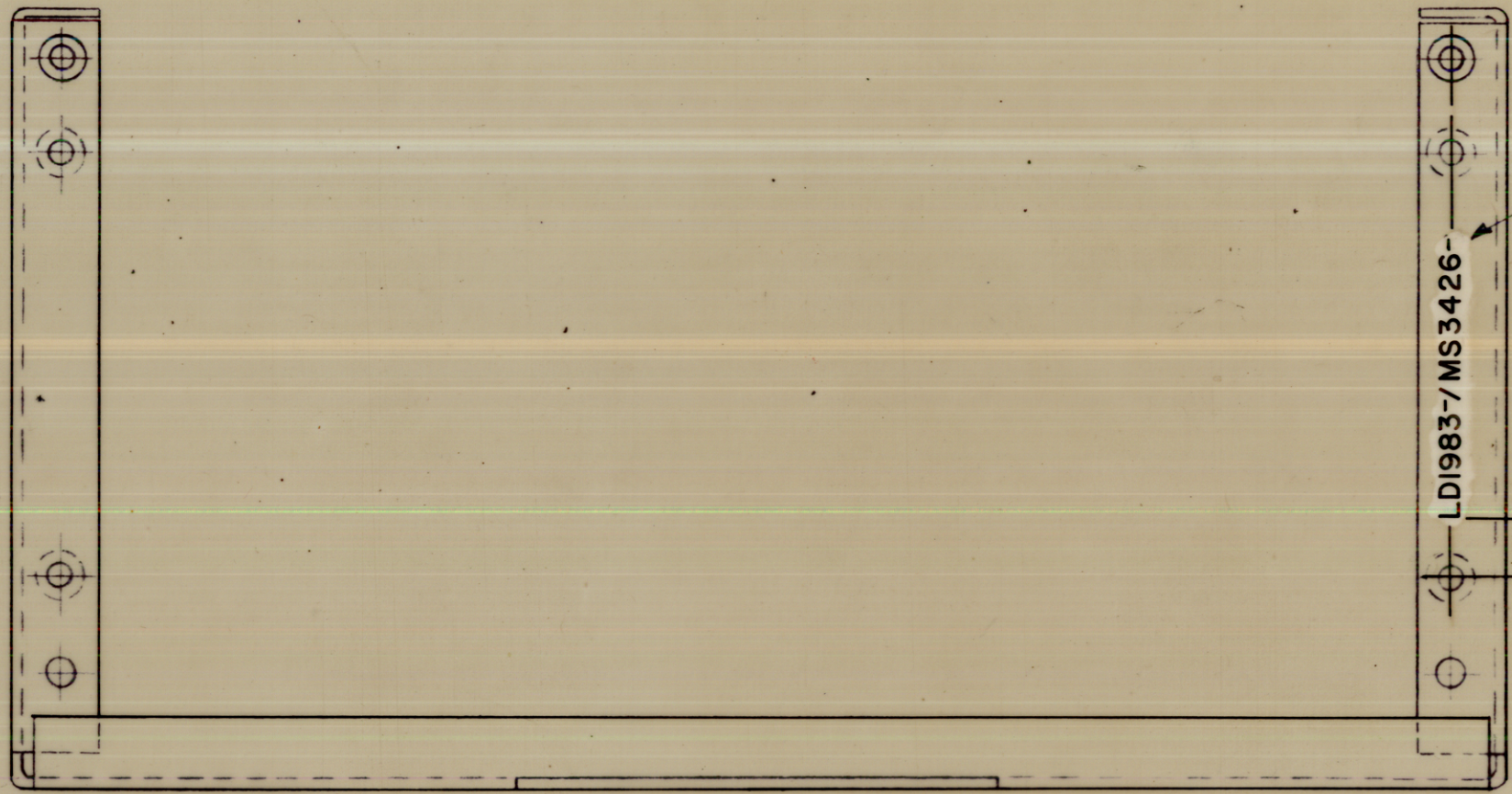
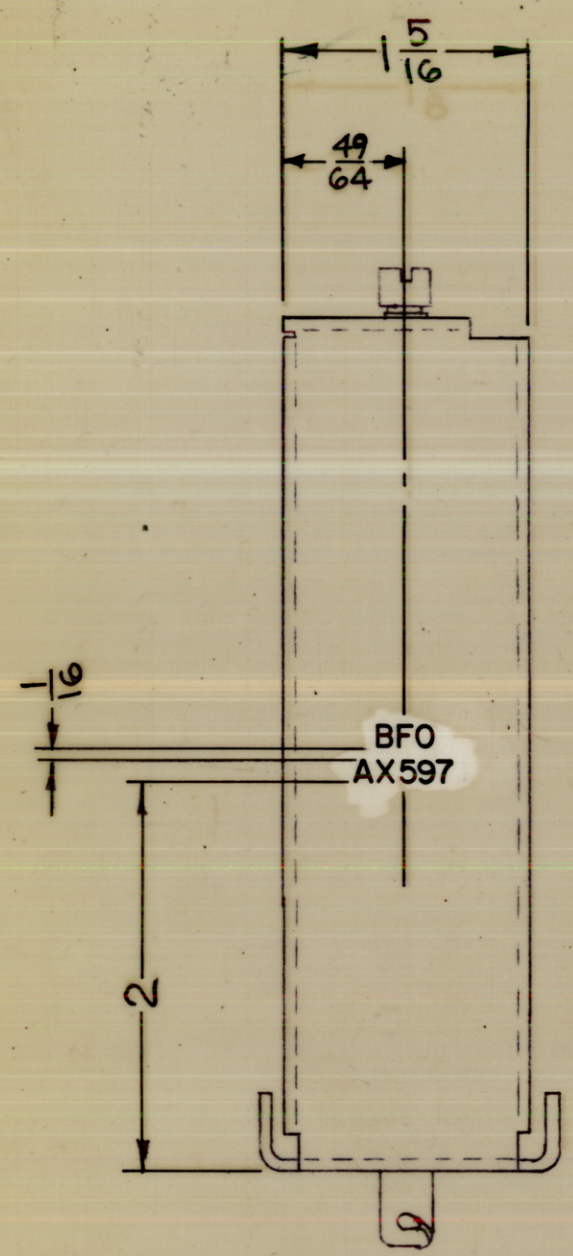


LD1983

REVISIONS

| SYM | DESCRIPTION | DATE | E.M.N. NO. | DRAFT | CHKD | APPD |
|-----|---------------------------------|---------|------------|-------|------|------|
| Ø | ORIGINAL RELEASE FOR PRODUCTION | 8/19/65 | Ø | Ø | | |



MARK TMC PART NO. WITH LATEST REVISION LETTERS

- UNLESS OTHERWISE SPECIFIED -
 MARKING PROCESS: AS PER TMC SPECIFICATION S-727.
 LETTERING: 1/8 HIGH BLACK GOTHIC, LOCATED AS SHOWN.

REF.: MS3426

| REQ'D. | ITEM | PART NUMBER | DESCRIPTION | SYMBOL |
|---|------|--|--|------------------------|
| M. ZETENA LIST OF MATERIAL | | | | |
| MATERIAL | | | THE TECHNICAL MATERIEL CORP. MAMARONECK, NEW YORK | |
| FINISH | | | TITLE MARKING, FRAME, MTG-BFO MODULE | |
| UNLESS OTHERWISE SPECIFIED DIMENSIONS ARE IN INCHES AND INCLUDE CHEMICALLY APPLIED OR PLATED FINISHES | | DRAWN H. AUSTIN DATE 8-10-65 | FINAL APPROVAL <i>[Signature]</i> DATE 8/19/65 | DATE 8/19/65 |
| DECIMALS .X ± .05 .XX ± .01 .XXX ± .005 | | FRACTIONS ± 1/64 ANGLES ± 0° 30' | ELECT. DES. <i>[Signature]</i> DATE 8/19/65 | LD1983 |
| TOLERANCES | | MECH. DES. <i>[Signature]</i> DATE 8/19/65 | SHEET | REV. LTR. Ø |

| | | |
|--------------|---------------|------------|
| 1 | VLRE-1 | AX597 |
| Q'TY./UNIT | MODEL USED ON | ASS'Y. NO. |
| SCALE 1:1 | CODE A | |

NOTES

THE CONTENTS OF THIS DRAWING ARE THE EXCLUSIVE PROPERTY OF THE TECHNICAL MATERIEL CORP. ITS UNAUTHORIZED USE OR REPRODUCTION IN WHOLE OR IN PART IS STRICTLY FORBIDDEN.