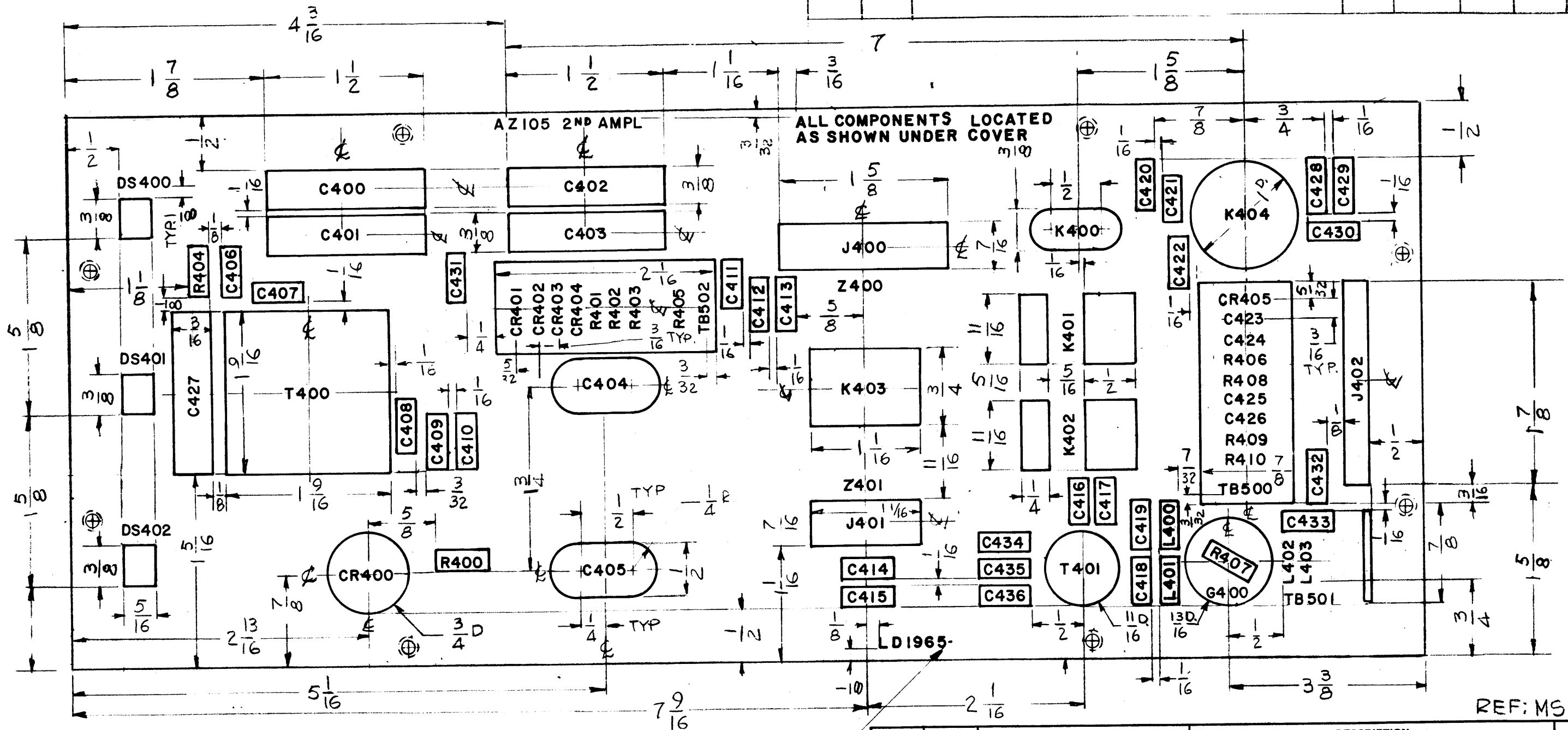


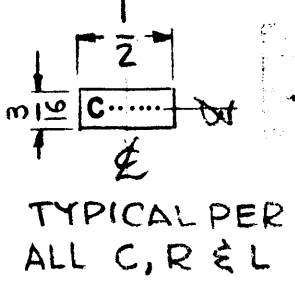
REVISIONS

SYM	DESCRIPTION	DATE	E.M.N. NO.	DRAFT	CHKD	APPD
X1	C434 RELOCATED. DIM K403/4 WAS S/B	7-12-65	X1	G.D.L		
X2	C435 & C436 ADDED. R404, 5,6,7,8,9 & 10 RELOCATED. L404,5,6 DEL.	7-20-65	X2	G.D.L	CA	
Ø	ORIGINAL RELEASE FOR PRODUCTION	5-5-66	Ø	WJW		



REF: MS4294

MARKING PROCESS: AS PER TMC SPECIFICATION S-727.
 LETTERING: 3/32 HIGH BLACK GOTHIC, LOCATED AS SHOWN.
 LINES : WIDTH OF STROKE .015



MARK TMC P/No. W/LATEST REV. LETTER

NOTES

Q'TY./UNIT	TST () 10K	AZ 105
SCALE	MODEL USED ON	ASS'Y. NO.
1:1	A	
THE CONTENTS OF THIS DRAWING ARE THE EXCLUSIVE PROPERTY OF THE TECHNICAL MATERIEL CORP. ITS UNAUTHORIZED USE OR REPRODUCTION IN WHOLE OR IN PART IS STRICTLY FORBIDDEN.		

REQ'D.	ITEM	PART NUMBER	DESCRIPTION	SYMBOL
F. BUDETTI LIST OF MATERIAL				
MATERIAL			THE TECHNICAL MATERIEL CORP. MAMARONECK, NEW YORK	
FINISH			TITLE MARKING, COVER BOTTOM MODULE	
UNLESS OTHERWISE SPECIFIED DIMENSIONS ARE IN INCHES AND INCLUDE CHEMICALLY APPLIED OR PLATED FINISHES			DRAWN G.D.L	DATE 7-12-65
DECIMALS .X ± .05 .XX ± .01 .XXX ± .005			CHECKED [Signature]	DATE
FRACTIONS ± 1/64 ANGLES ± 0° 30'			ELECT. DES. [Signature]	DATE 5-5-66
TOLERANCES			MECH. DES. [Signature]	DATE
			FINAL APPROVAL [Signature]	DATE 5/5/66
			SHEET LD1965	REV. LTR. Ø