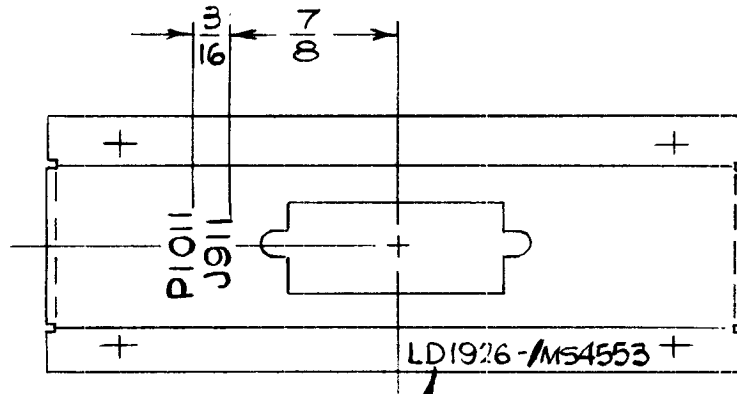


REQ. PER UNIT	USED ON			LD1926 Ø
	MODEL	ASS'Y. NO.	DATE	
1	TSTE-10K		6-8-65	



MARK TMC PART NO. W/LATEST REV. LETTERS

MARKING PROCESS: AS PER TMC SPECIFICATION S-727.

LETTERING: 1/8 HIGH BLACK GOTHIC, LOCATED AS SHOWN.

REF.: MS4553

REQ.	ITEM	PART NO.	DESCRIPTION				SYMBOL
			THE TECHNICAL MATERIEL CORP. MAMARONECK. NEW YORK				
			MARKING, BRACKET MFG.				
			CONNECTOR				
Ø	ORIG. RELEASE FOR PRD.	5-5-61	Ø	RG			
SYM	DESCRIPTION	DATE	CH. NO.	DRAFTS	CHECKER	ENG. APP.	
UNLESS OTHERWISE SPECIFIED DIMENSIONS ARE IN INCHES AND INCLUDE CHEMICALLY APPLIED OR PLATED FINISHES		SCALE	1:1				
DECIMALS .X ± .05 .XX ± .01 .XXX ± .005	TOLERANCES	FRACTIONS ± 1/64 ANGLES ± 0° 30'	CODE				
					H. AUSTIN		
					DRAWN	CHECKED	
						FINAL APPROVAL	
						LD1926 Ø	
					ELEC. DES. APP.	MECH. DES. APP.	