

G

F

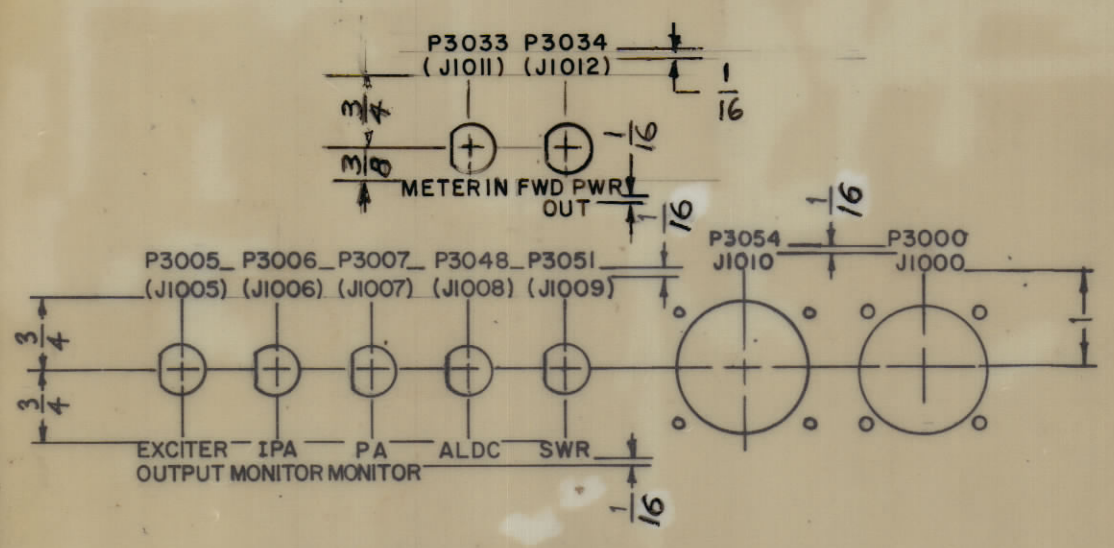
E

D

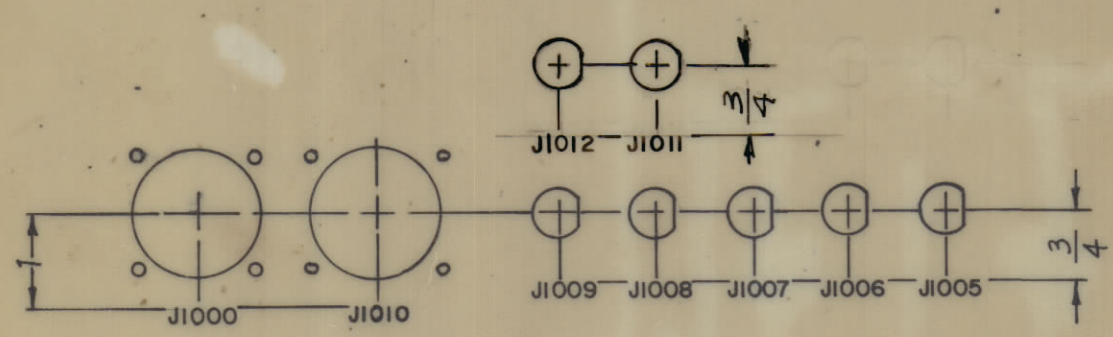
C

B

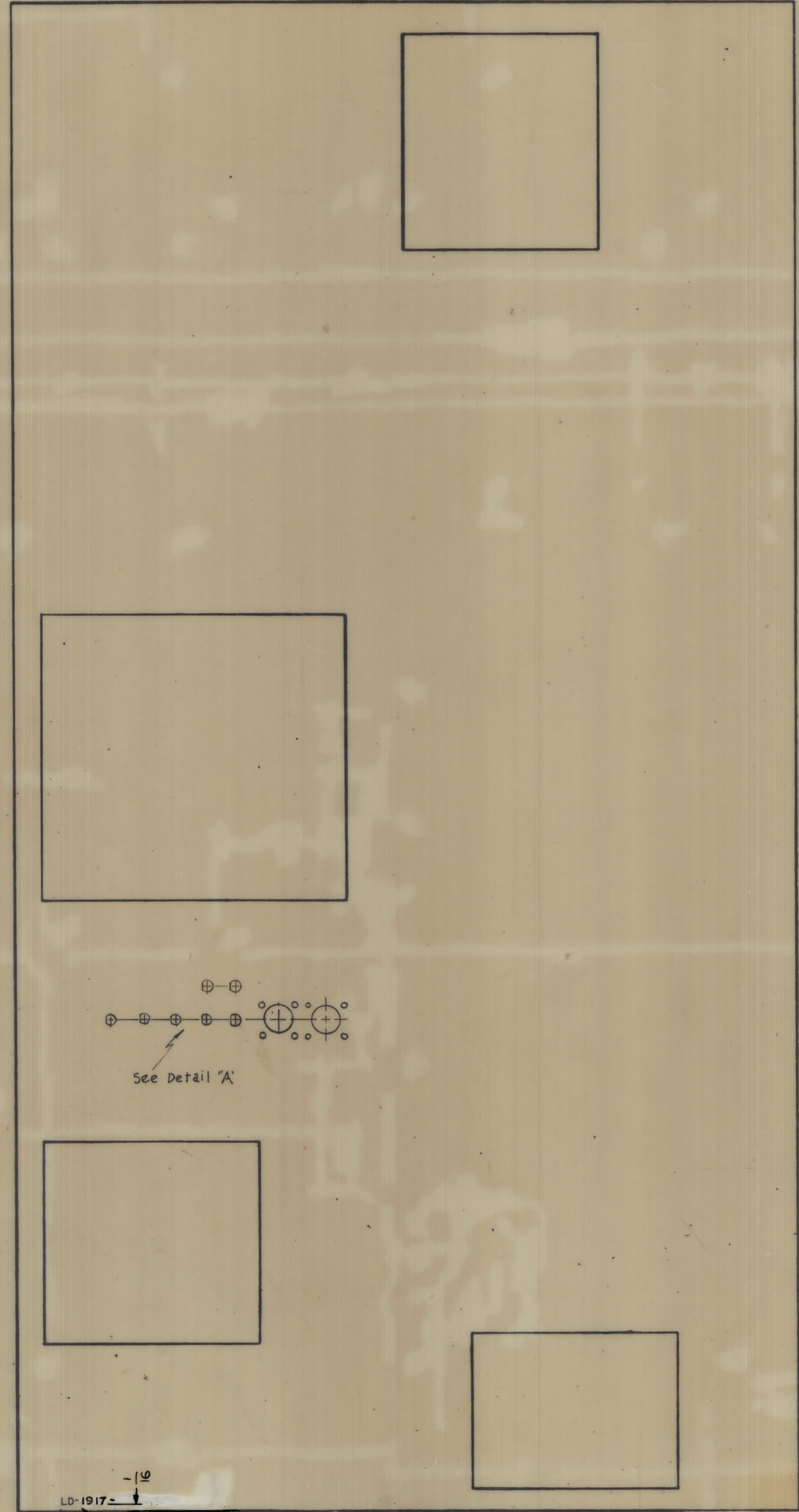
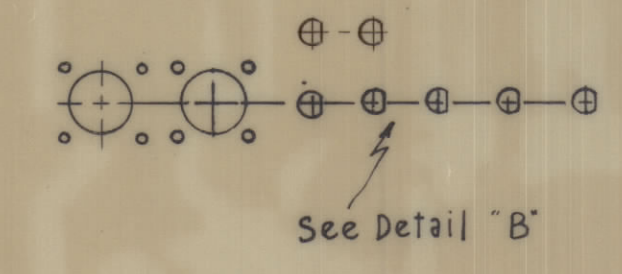
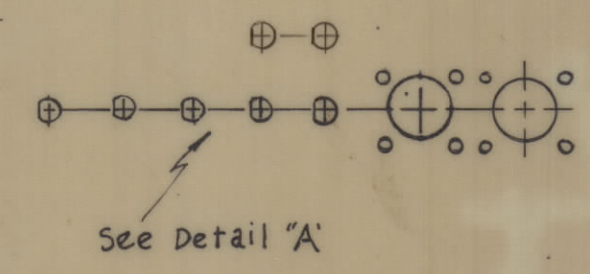
A



DETAIL "A"



DETAIL "B"



ORIGINAL RELEASE FOR PRODUCTION		5-9-67	CV	MS	LD
SYM	ZONE	DATE	CH. NO.	DRAFTS	CHECKER
UNLESS OTHERWISE SPECIFIED:		SCALE DD NOT SCALE			
DIMENSIONS ARE IN INCHES		MAXIMUM ALLOWABLE TOLERANCES HAVE BEEN DETERMINED AND ANY DEVIATIONS WILL BE CAUSE FOR REJECTION. REMOVE ALL BURRS & SHARP EDGES			
TOLERANCES ON FRACTIONS 1/64		DECIMALS 2.008		ANGLES 1/2°	

MARK TMC PART NO. WITH LATEST REVISION LETTER

MARKING PROCESS: AS PER TMC SPECIFICATION S-727.  
LETTERING: 1/8 HIGH BLACK GOTHIC, LOCATED AS SHOWN.

REF. TMC DWG. NO. MS 4471

REQ. ITEM	PART NO.	F. BUDETTI	DESCRIPTION	SYMBOL
STOCK SIZE		THE TECHNICAL MATERIEL CORP. MAMARONECK, NEW YORK		
MATERIAL		MARKING, SHIELD, LEFT SIDE		
TYPE & TEMPER		MARKING PROCESS: AS PER TMC SPEC S-727		
HEAT TREAT. SPEC.		LD 1917	DRAWN: [Signature] CHECKED: [Signature] FINAL APPROVAL: [Signature]	
FINISH & SPEC. NO.	ELC. DES. APP.	MECH. DES. APP.	SHEET OF	

LD 1917