

5

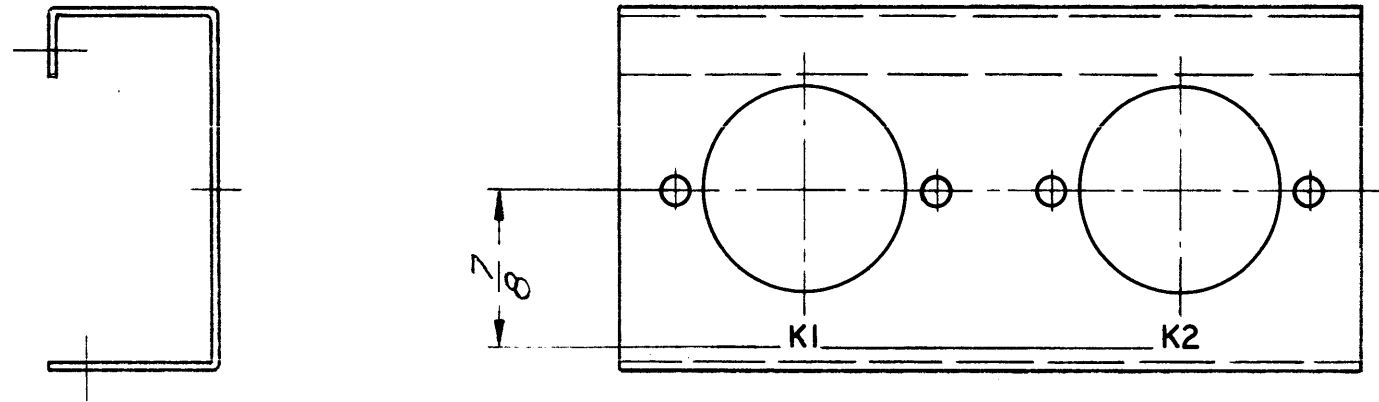
4

3

2

1

REVISIONS						
ZONE	LTR	DESCRIPTION	DATE	E.M.N.NO	DRAFT	CHKD APPD
	X	EXP. RELEASE	2/5/69		R.H.	
	Ø	ORIG. RELEASE FOR PROD	2-12-68	Ø	R.G.	



MARKING PROCESS: AS PER TMC SPECIFICATION S727
 LETTERING: 1/8 HIGH BLACK GOTHIC, LOCATED AS SHOWN

REF. MS 4072

REQ'D	ITEM	PART NUMBER	DESCRIPTION	SYM.
			A. MARTINENG LIST OF MATERIAL	
FINAL APPROVAL		DATE	THE TECHNICAL MATERIEL CORP.	
MECH. DES.		DATE	MAMARONECK, NEW YORK	
ELECT. DES.		DATE	MARKING, CHASSIS, RELAY PANEL	
CHECKED		DATE		
DRAWN		DATE		
SIZE	CODE IDENT. NO.	DWG NO.	ISSUE	
B	82679	LD 1806	Ø	
SCALE			SHEET OF	

QTY / UNIT	MODEL USED ON	ASS'Y NO.
	AX 515	
APPLICATION		
	CODE	

UNLESS OTHERWISE SPECIFIED DIMENSIONS ARE IN INCHES AND INCLUDE CHEMICALLY APPLIED OR PLATED FINISHES

DECIMALS .X ± .05 .XX ± .01 .XXX ± .005

FRACTIONS 1/64

TOLS. ANGLES 0° -30'

MATERIAL

FINISH

NOTICE TO PERSONS RECEIVING THIS DRAWING
 THE TECHNICAL MATERIEL CORPORATION claims proprietary right in the material disclosed hereon. This drawing is issued in confidence for engineering information only and may not be reproduced or used to manufacture anything shown hereon without permission from THE TECHNICAL MATERIEL CORPORATION to the user. This drawing is loaned for mutual assistance and is subject to recall at any time.

5

4

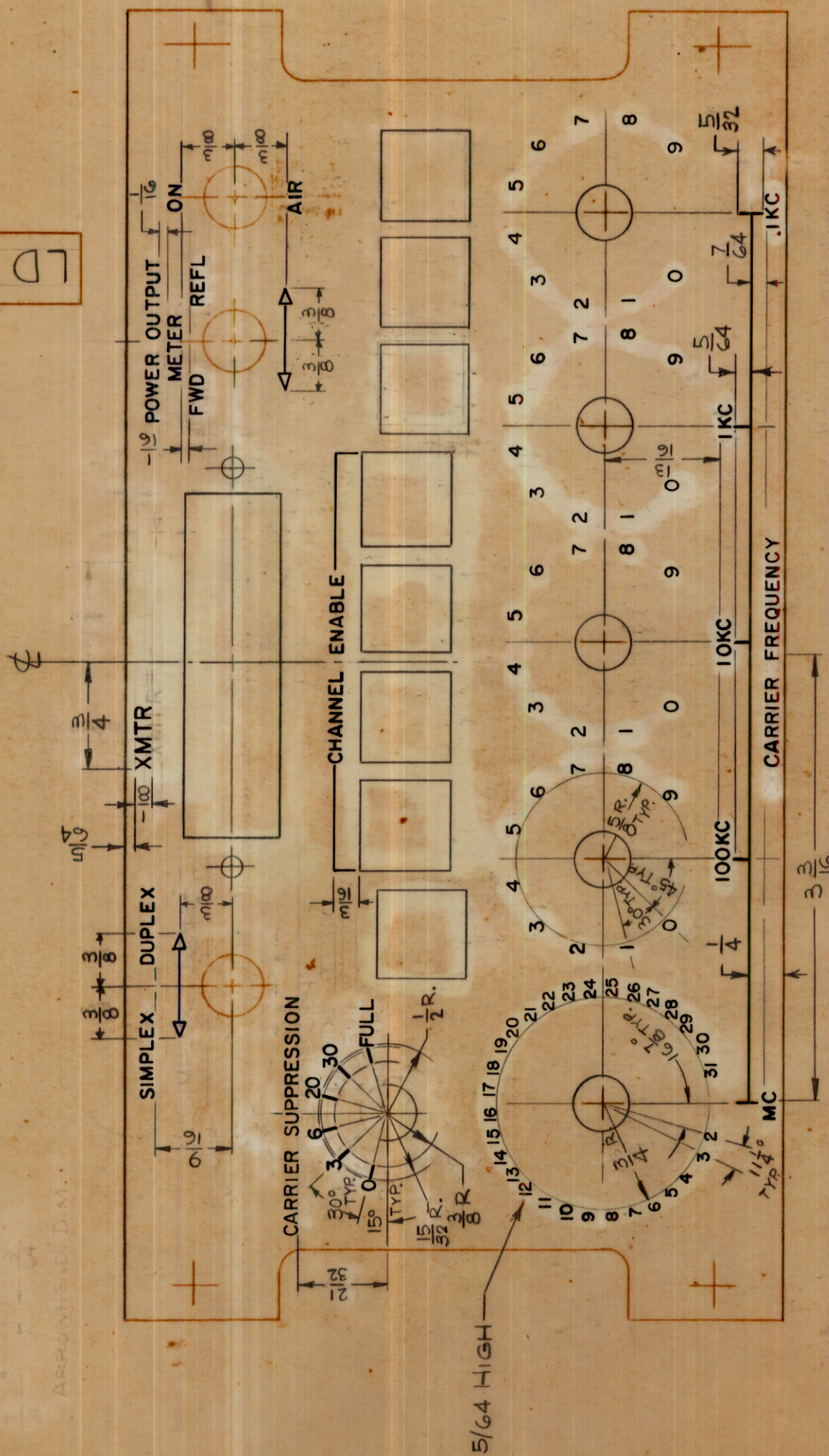
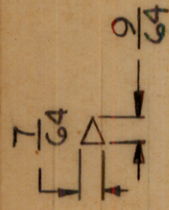
3

2

1

HEIGHT OF LETTERS	DEPTH OF STROKE	WIDTH OF STROKE
3/32	.010	.015
1/8	.010	.020
LINES	.010	.015
ARROWHEADS	.010	
5/64	.010	.015

DETAIL - ARROWHEAD



NOTE

1. ALL LETTERING TO BE 3/32 HIGH GOTHIC WHITE FILLED, UNLESS OTHERWISE SPECIFIED.
2. ALL LINES TO BE WHITE FILLED.
3. ALL ARROWHEADS TO BE WHITE OUTLINE FILL.
4. ENGRAVING PROCESS AS PER TMC SPEC. S-566
5. 1/16 SPACING BETWEEN LETTER GROUPS.
6. ALL LETTER GROUPS TO BE CENTERED ON HOLES.

REVISIONS

SYM	DESCRIPTION	DATE	E.M.N. NO.	DRAFT	CHKD	APPD
Ø	ORIGINAL RELEASE FOR PRODUCTION	4-21-65		ALA		

LD1810

REF: MS4522

REQ'D.	ITEM	PART NUMBER	DESCRIPTION	SYMBOL
M. ZETENA			LIST OF MATERIAL	
			THE TECHNICAL MATERIEL CORP. MAMARONECK, NEW YORK.	
			TITLE	
			MARKING, PANEL, FRONT, TRANSMITTER.	
			DRAWN	DATE
			H. AUSTIN	3-10-65
			CHECKED	DATE
			JFK	4/22/65
			ELECT. DES.	DATE
			MECH. DES.	DATE
				4-22-65
			FINAL APPROVAL	DATE
			JFK	4/23/65
			LD1810	
			SHEET 1 OF 2	
			REV. LTR.	

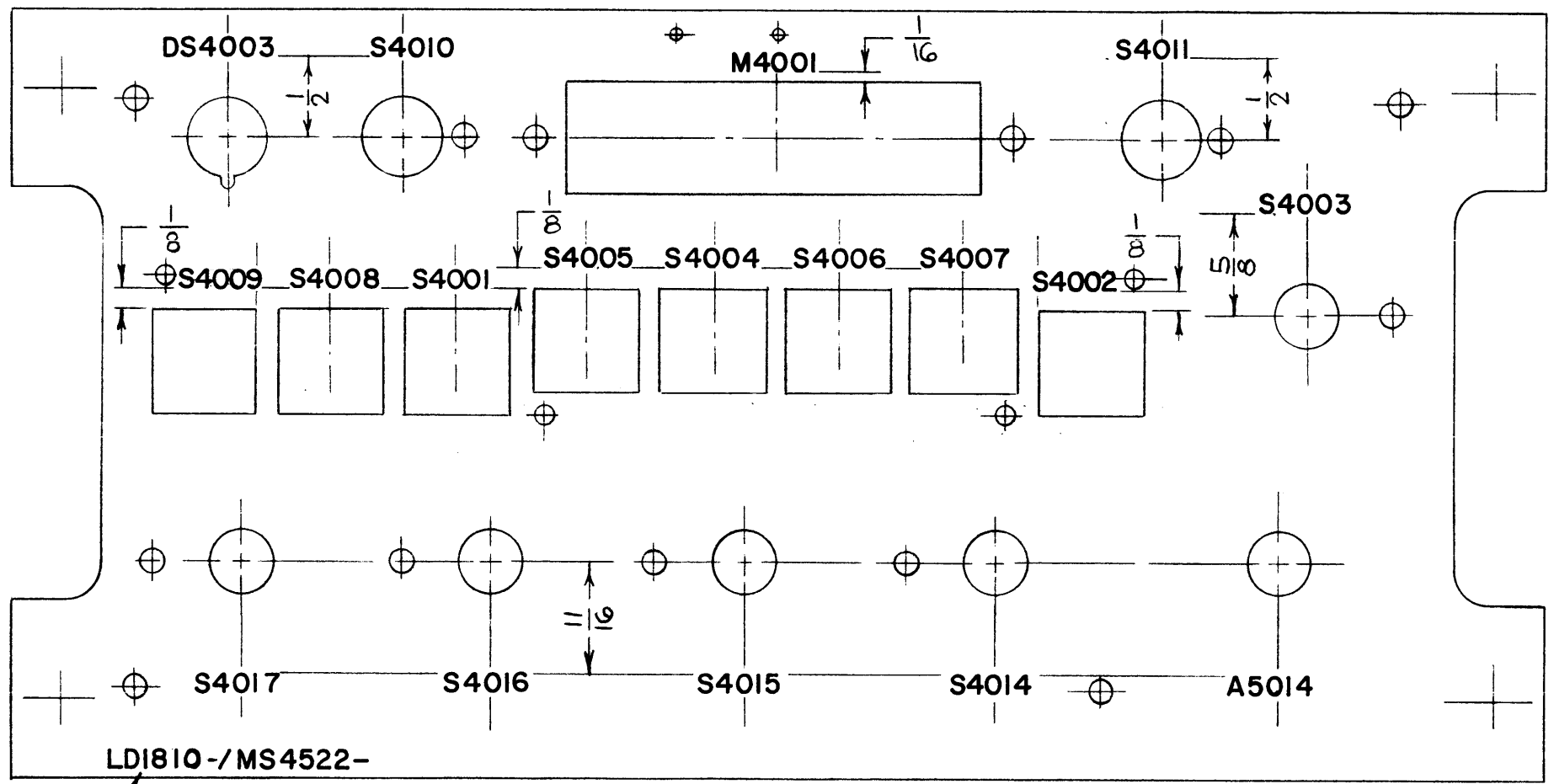
QTY./UNIT	LRCM-1	MODEL USED ON	AX 568	ASSY. NO.
SCALE	1:1	CODE		

NOTES

THE CONTENTS OF THIS DRAWING ARE THE EXCLUSIVE PROPERTY OF THE TECHNICAL MATERIEL CORP. ITS UNAUTHORIZED USE OR REPRODUCTION IN WHOLE OR IN PART IS STRICTLY FORBIDDEN.

LD1810

REVISIONS						
SYM	DESCRIPTION	DATE	E.M.N. NO.	DRAFT	CHKD	APPD
Ø	ORIGINAL RELEASE FOR PRODUCTION	4-21-65		HLA		



MARKING PROCESS: AS PER TMC SPECIFICATION S-727.
 LETTERING: 1/8 HIGH BLACK GOTHIC, LOCATED AS SHOWN.

MARK TMC PART NO.
 WITH LATEST REV. LETTER
 LOCATED AS SHOWN

REF.: MS4522

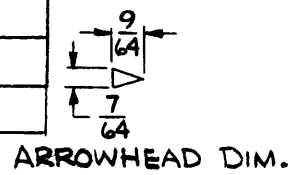
1	LRCM-1	AX568
Q'TY./UNIT	MODEL USED ON	ASS'Y. NO.
SCALE 1:1	CODE	

REQ'D.	ITEM	PART NUMBER	DESCRIPTION	SYMBOL
M. ZETENA LIST OF MATERIAL				
MATERIAL		THE TECHNICAL MATERIEL CORP. MAMARONECK, NEW YORK		
FINISH		TITLE MARKING, PANEL, FRONT, XMTR (INTERIOR)		
UNLESS OTHERWISE SPECIFIED DIMENSIONS ARE IN INCHES AND INCLUDE CHEMICALLY APPLIED OR PLATED FINISHES				
DECIMALS .X ± .05 .XX ± .01 .XXX ± .005	TOLERANCES	FRACTIONS ± 1/64 ANGLES ± 0° 30'	DRAWN H. AUSTIN DATE 4-21-65	FINAL APPROVAL F. E. EATON DATE 4/23/65
			ELECT. DES. DATE	LD1810
			MECH. DES. DATE 4-22-65	Ø
SHEET 2 OF 2				REV. LTR.

NOTES

THE CONTENTS OF THIS DRAWING ARE THE EXCLUSIVE PROPERTY
 OF THE TECHNICAL MATERIEL CORP. ITS UNAUTHORIZED USE OR
 REPRODUCTION IN WHOLE OR IN PART IS STRICTLY FORBIDDEN.

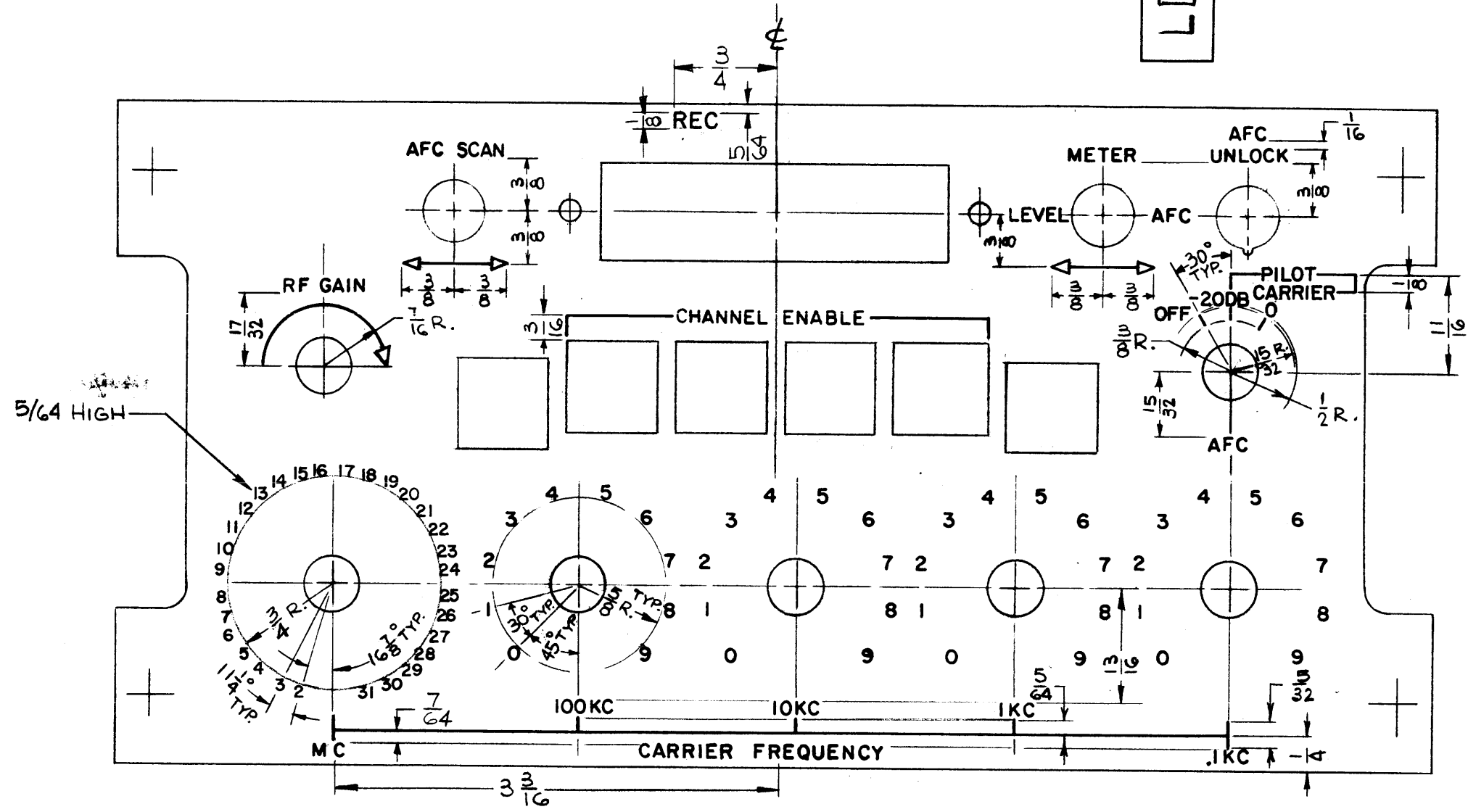
HEIGHT OF LETTERS	DEPTH OF STROKE	WIDTH OF STROKE
3/32	.010	.015
1/8	.010	.020
LINES	.010	.015
ARROWHEADS	.010	
5/64	.010	.015



LD1811

REVISIONS					
SYM	DESCRIPTION	DATE	E.M.N. NO.	DRAFT	CHKD APPD
Ø	ORIGINAL RELEASE FOR PRODUCTION	4-21-65		HLL	

- NOTE**
1. ALL LETTERING TO BE 3/32 HIGH GOTHIC WHITE FILLED, UNLESS OTHERWISE SPECIFIED.
 2. ALL LINES TO BE WHITE FILLED.
 3. ALL ARROWHEADS TO BE WHITE OUTLINE FILL.
 4. ENGRAVING PROCESS AS PER TMC SPEC. S-566
 5. 1/16 SPACING BETWEEN LETTER GROUPS.
 6. ALL LETTER GROUPS TO BE CENTERED ON HOLES.



REF: MS4521

REQ'D.	ITEM	PART NUMBER	DESCRIPTION	SYMBOL
M. ZETENA LIST OF MATERIAL				
MATERIAL		THE TECHNICAL MATERIEL CORP. MAMARONECK, NEW YORK		
FINISH		TITLE MARKING, PANEL, FRONT, RECEIVER		
UNLESS OTHERWISE SPECIFIED DIMENSIONS ARE IN INCHES AND INCLUDE CHEMICALLY APPLIED OR PLATED FINISHES		DRAWN H. AUSTIN	DATE 3-9-65	FINAL APPROVAL <i>[Signature]</i>
		CHECKED <i>[Signature]</i>	DATE 4/22/65	DATE 4/23/65
		ELECT. DES.	DATE	LD1811
		MECH. DES. <i>[Signature]</i>	DATE 4-22-65	Ø
		SHEET 1 OF 2		REV. LTR.

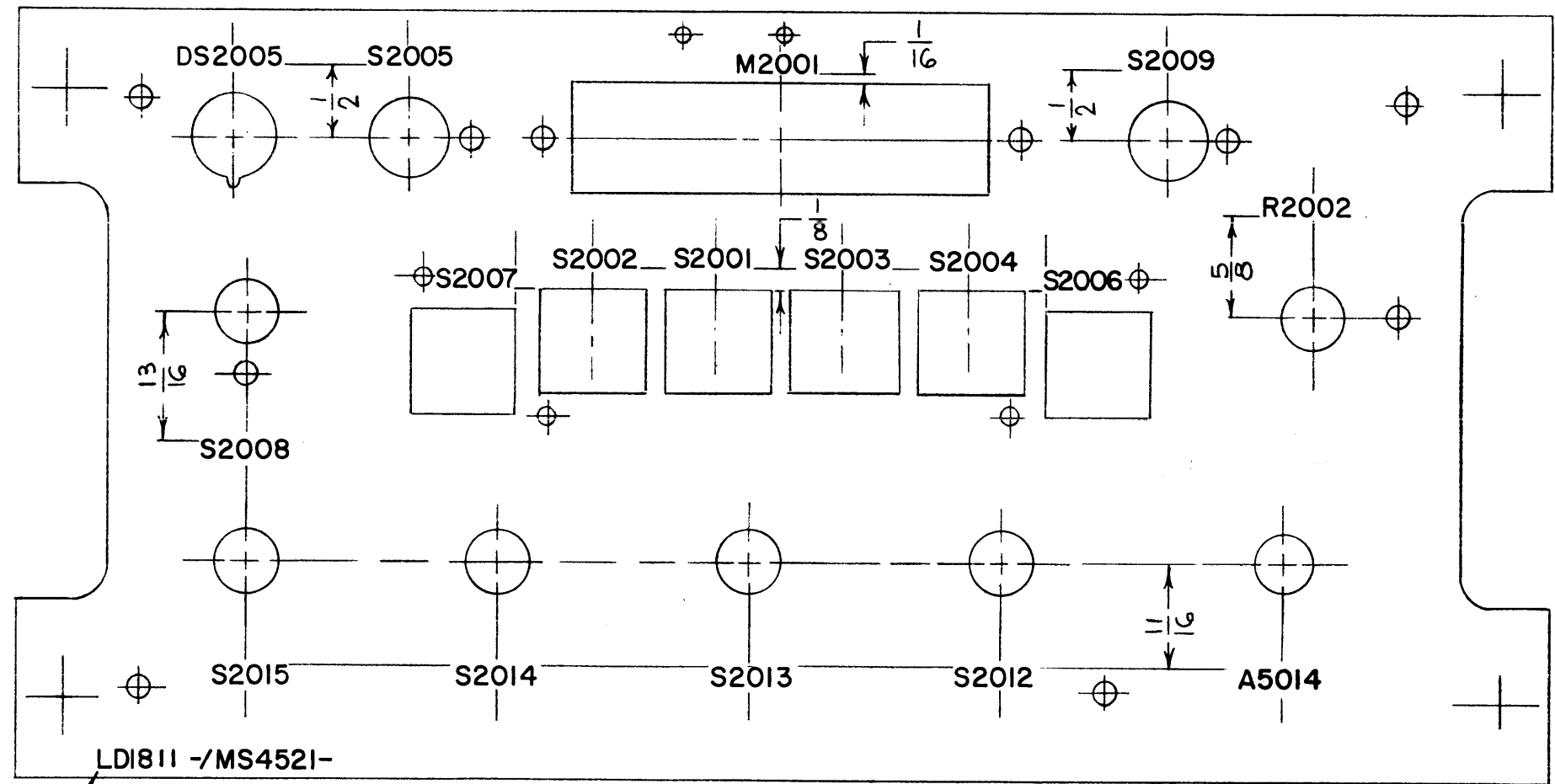
1	LRCC-1	AX567
Q'TY./UNIT	MODEL USED ON	ASS'Y. NO.
SCALE 1:1	CODE	

THE CONTENTS OF THIS DRAWING ARE THE EXCLUSIVE PROPERTY OF THE TECHNICAL MATERIEL CORP. ITS UNAUTHORIZED USE OR REPRODUCTION IN WHOLE OR IN PART IS STRICTLY FORBIDDEN.

NOTES

LD1858

REVISIONS						
SYM	DESCRIPTION	DATE	E.M.N. NO.	DRAFT	CHKD	APPD
Ø	ORIGINAL RELEASE FOR PRODUCTION	4-21-65		H/A		



MARKING PROCESS: AS PER TMC SPECIFICATION S-727.
 LETTERING: 1/8 HIGH BLACK GOTHIC, LOCATED AS SHOWN.

MARK TMC PART NO.
 W/LATEST REV. LETTER
 LOCATED AS SHOWN

REF. : MS4521

1	LRCC-1	AX567
Q'TY./UNIT	MODEL USED ON	ASS'Y. NO.
SCALE 1:1	CODE	

NOTES

THE CONTENTS OF THIS DRAWING ARE THE EXCLUSIVE PROPERTY OF THE TECHNICAL MATERIEL CORP. ITS UNAUTHORIZED USE OR REPRODUCTION IN WHOLE OR IN PART IS STRICTLY FORBIDDEN.

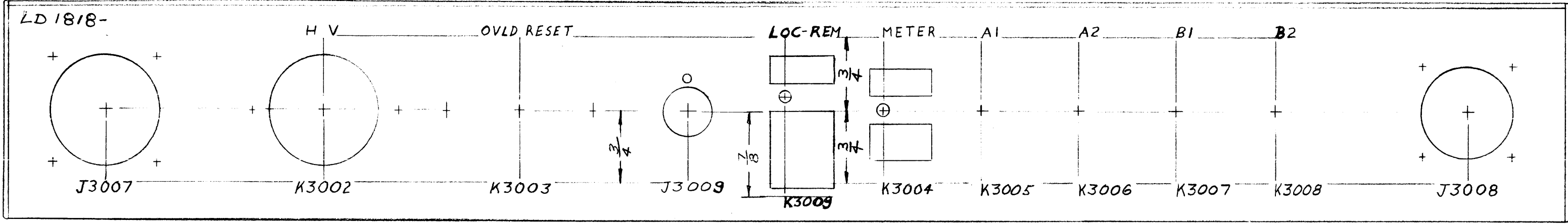
REQ'D.	ITEM	PART NUMBER	DESCRIPTION	SYMBOL
M. ZETENA LIST OF MATERIAL				
MATERIAL		THE TECHNICAL MATERIEL CORP. MAMARONECK, NEW YORK		
FINISH		TITLE MARKING, PANEL, FRONT, RCVR (INTERIOR)		
UNLESS OTHERWISE SPECIFIED DIMENSIONS ARE IN INCHES AND INCLUDE CHEMICALLY APPLIED OR PLATED FINISHES		DRAWN H. AUSTIN	DATE 4-20-65	FINAL APPROVAL <i>F. C. Lopez</i>
		CHECKED <i>JCB</i>	DATE 4/22/65	DATE 4/23/65
DECIMALS .X ± .05 .XX ± .01 .XXX ± .005		ELECT. DES. <i>AJB</i>		DATE 4-22-65
FRACTIONS ± 1/64 ANGLES ± 0° 30'		MECH. DES. <i>AJB</i>		DATE 4-22-65
TOLERANCES		SHEET 2 OF 2		REV. LTR. Ø

LD1818

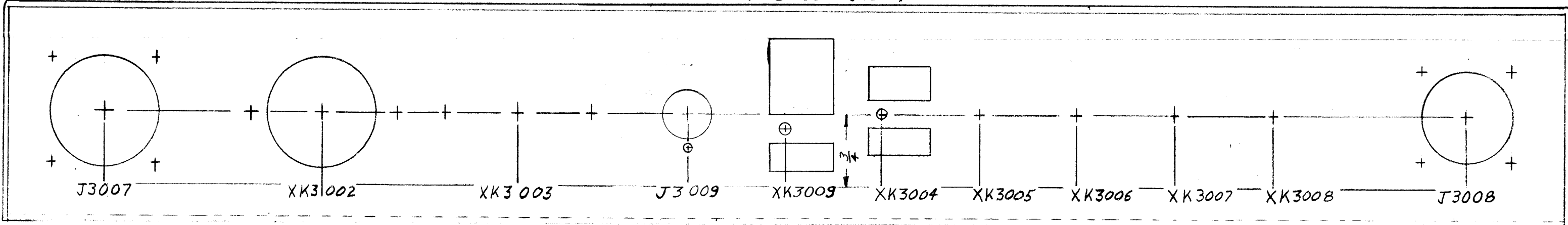
REVISIONS						
SYM	DESCRIPTION	DATE	E.M.N. NO.	DRAFT	CHKD	APPD
X	EXPERIMENTAL RELEASE	3/11/65	-H	DB		
X1	Added TB3006 Marking	4-9-65		DB		
X2	Deleted TB3006 Marking, Add K3009, J3009	4-14-65		DB		
Ø	ORIGINAL RELEASE FOR PRODUCTION	5/17/66		C.V		<i>file</i>

MARK WITH TMC PART NUMBER WITH LATEST REVISION LETTER

OUTSIDE VIEW



INSIDE VIEW



MARKING PROCESS: AS PER TMC SPECIFICATION S-727.
 LETTERING: 1/8 HIGH BLACK GOTHIC, LOCATED AS SHOWN.

REF. MS 4434

1	AX 566	A 420 B
Q'TY./UNIT	MODEL USED ON	ASS'Y. NO.
SCALE	CODE	

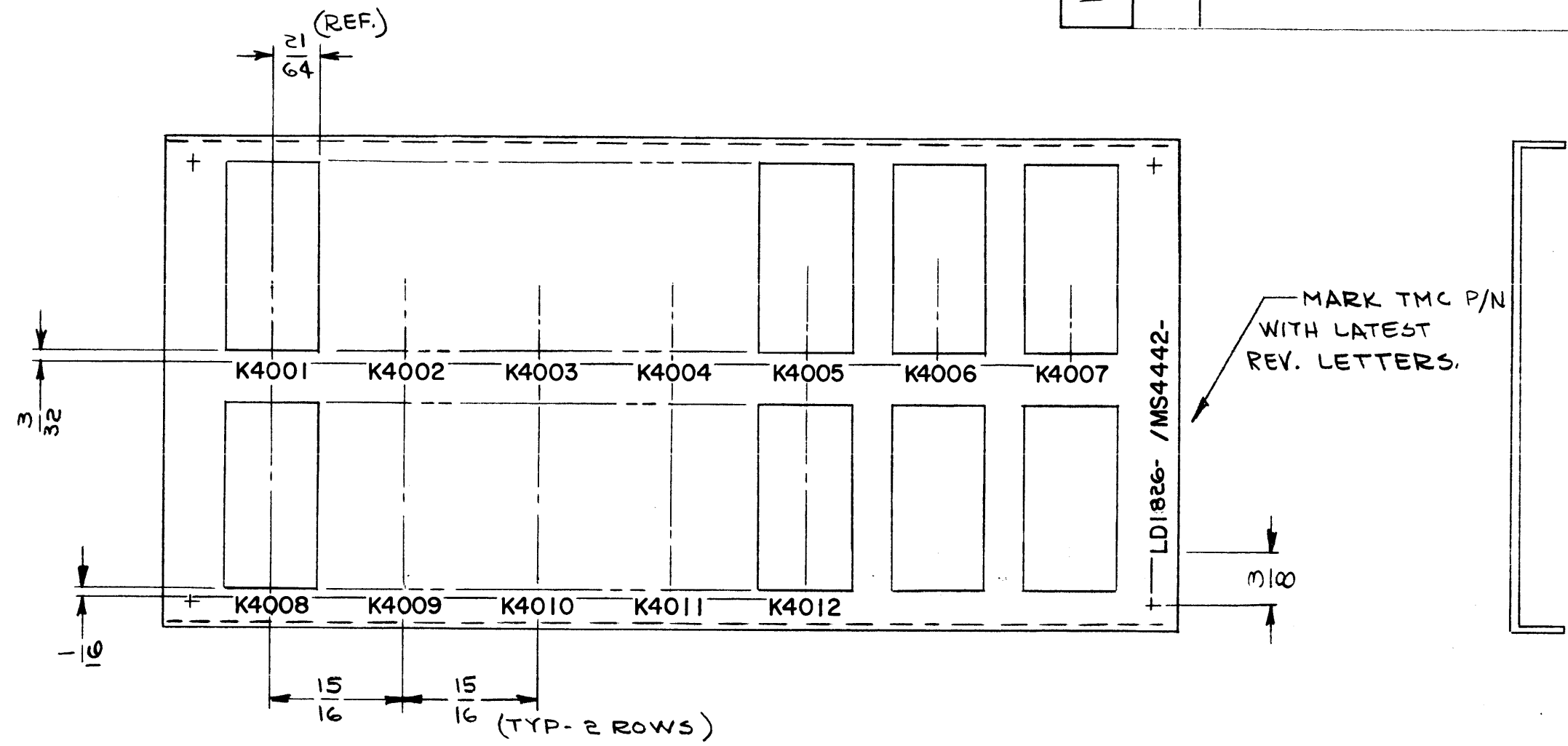
NOTES

THE CONTENTS OF THIS DRAWING ARE THE EXCLUSIVE PROPERTY OF THE TECHNICAL MATERIEL CORP. ITS UNAUTHORIZED USE OR REPRODUCTION IN WHOLE OR IN PART IS STRICTLY FORBIDDEN.

REQ'D.	ITEM	PART NUMBER	DESCRIPTION	SYMBOL
LIST OF MATERIAL				
MATERIAL		THE TECHNICAL MATERIEL CORP. MAMARONECK, NEW YORK		
FINISH		TITLE MARKING, CHASSIS, RELAY PANEL		
UNLESS OTHERWISE SPECIFIED DIMENSIONS ARE IN INCHES AND INCLUDE CHEMICALLY APPLIED OR PLATED FINISHES		DRAWN <i>DB</i>	DATE 3/11/65	FINAL APPROVAL <i>DB</i>
		CHECKED <i>DB</i>	DATE 7/22/65	DATE 5/17/66
		ELECT. DES. <i>DB</i>	DATE 5-13-66	REV. LTR. Ø
		MECH. DES.	DATE	SHEET

SYM	REVISIONS					
	DESCRIPTION	DATE	E.M.N. NO.	DRAFT	CHKD	APPD
Ø	ORIGINAL RELEASE FOR PRODUCTION	3/17/69		W		

LD1826



REF: MS 4442

MARKING PROCESS: AS PER TMC SPECIFICATION S-727.
LETTERING: 1/8 HIGH BLACK GOTHIC, LOCATED AS SHOWN.

1	RSBA-1	
Q'TY./UNIT	MODEL USED ON	ASS'Y. NO.
SCALE 1:1	CODE A	

NOTES

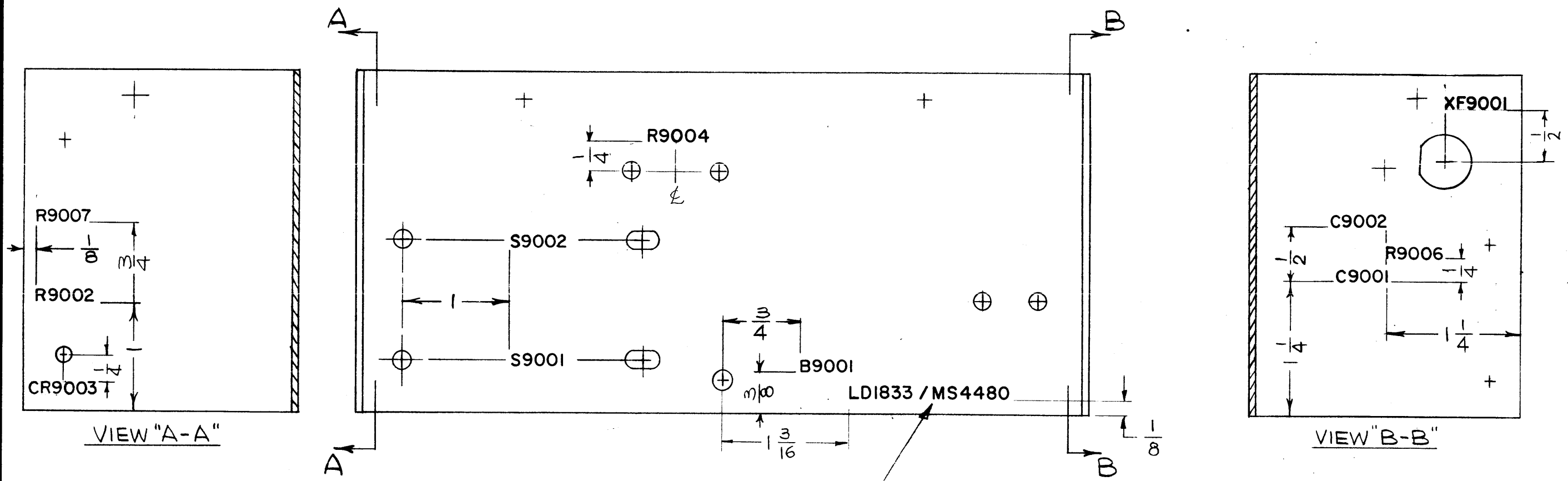
THE CONTENTS OF THIS DRAWING ARE THE EXCLUSIVE PROPERTY OF THE TECHNICAL MATERIEL CORP. ITS UNAUTHORIZED USE OR REPRODUCTION IN WHOLE OR IN PART IS STRICTLY FORBIDDEN.

REQ'D.	ITEM	PART NUMBER	DESCRIPTION	SYMBOL
	F. EATON		LIST OF MATERIAL FORMALLY E3162B-15	
	MATERIAL		THE TECHNICAL MATERIEL CORP. MAMARONECK, NEW YORK	
	FINISH		TITLE MARKING, PLATE, MTG, RELAY MARKING PROCESS: PER TMC SPEC 5727	
	UNLESS OTHERWISE SPECIFIED DIMENSIONS ARE IN INCHES AND INCLUDE CHEMICALLY APPLIED OR PLATED FINISHES		DRAWN <i>E. Jensen</i>	DATE 3-17-65
	DECIMALS .X ± .05 .XX ± .01 .XXX ± .005		CHECKED	DATE
	FRACTIONS ± 1/64 ANGLES ± 0° 30'		FINAL APPROVAL <i>[Signature]</i>	
	TOLERANCES		DATE	DATE 3-19-69
	ELECT. DES.		DATE	
	MECH. DES.		DATE	
	SHEET			REV. LTR. Ø

LD1826

LD1833

REVISIONS					
SYM	DESCRIPTION	DATE	E.M.N. NO.	DRAFT	CHKD APPD
X1	RELOCATED "C9001"; ADD. "C9002", "B9001", "R9002", "S9001", "S9002"	6-8-65		HKA	
X2	CR9003, XF9001 ADDED	8-2-65		RG	
X3	R9006, R9007 ADDED; C9002 RE LOCATED	8-6-65		RG	
Ø	ORIGINAL RELEASE FOR PRODUCTION	5-5-67	Ø	RG	



MARK TMC P/No. WITH LATEST REV. LETTER

REF: MS4480

MARKING PROCESS: AS PER TMC SPECIFICATION S-727.

LETTERING: 1/8 HIGH BLACK GOTHIC, LOCATED AS SHOWN.

NOTES

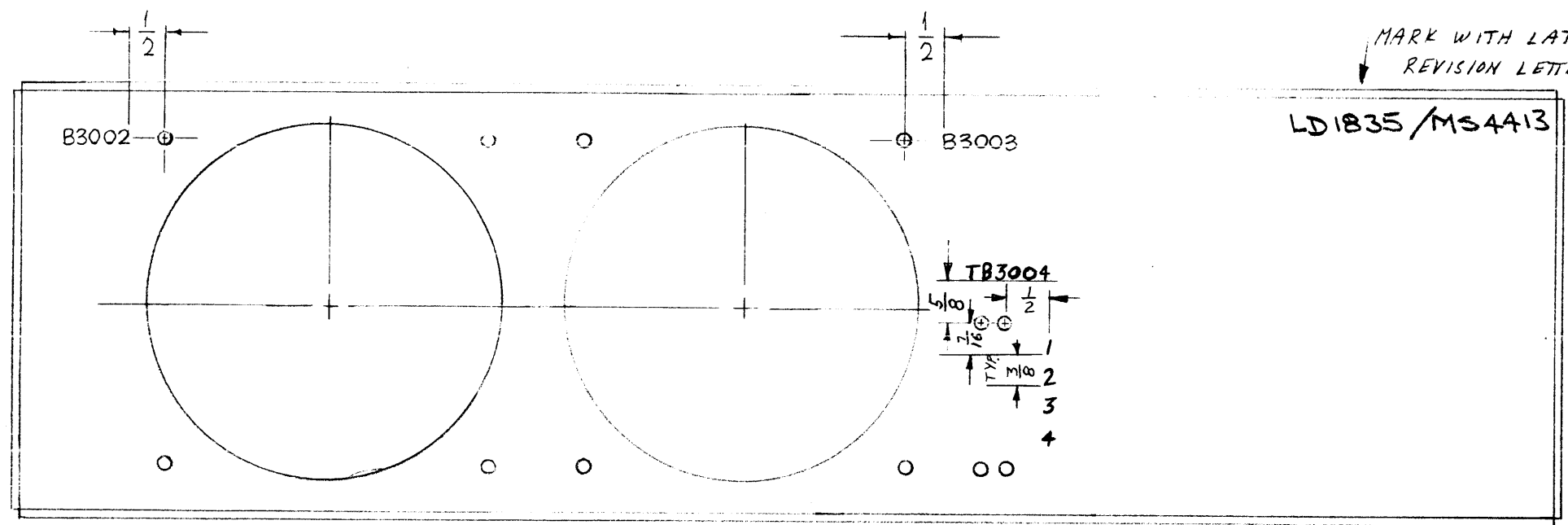
1	TSTE 10K	
Q'TY./UNIT	MODEL USED ON	ASS'Y. NO.
SCALE 1:1	CODE Δ	

THE CONTENTS OF THIS DRAWING ARE THE EXCLUSIVE PROPERTY OF THE TECHNICAL MATERIEL CORP. ITS UNAUTHORIZED USE OR REPRODUCTION IN WHOLE OR IN PART IS STRICTLY FORBIDDEN.

REQ'D.	ITEM	PART NUMBER	DESCRIPTION	SYMBOL
F. BUDETTI LIST OF MATERIAL				
MATERIAL		THE TECHNICAL MATERIEL CORP. MAMARONECK, NEW YORK		
FINISH		TITLE MARKING, CHASSIS WRAPAROUND MARKING PROCESS: AS PER TMC SPEC. 5727		
UNLESS OTHERWISE SPECIFIED DIMENSIONS ARE IN INCHES AND INCLUDE CHEMICALLY APPLIED OR PLATED FINISHES		DRAWN G.D.L.	DATE 4-29-65	FINAL APPROVAL <i>[Signature]</i> 5/5/67
DECIMALS .X ± .05 .XX ± .01 .XXX ± .005		CHECKED	DATE	
FRACTIONS ± 1/64 ANGLES ± 0° 30'		ELECT. DES. <i>[Signature]</i>	DATE	
TOLERANCES		MECH. DES. <i>[Signature]</i>	DATE	
SHEET LD1833				REV. LTR. Ø

LD 1835

REVISIONS					
SYM	DESCRIPTION	DATE	E.M.N. NO.	DRAFT	CHKD APPD
X	EXPERIMENTAL RELEASE	25 Mar 65		BPM	
XI	B3002, B3003 RELOCATED	7-2-65		JC	
Ø	ORIGINAL RELEASE FOR PRODUCTION	5/3/67	Ø	CV	file



MARKING PROCESS: AS PER TMC SPECIFICATION S-727.
 LETTERING: 1/8 HIGH BLACK GOTHIC, LOCATED AS SHOWN.

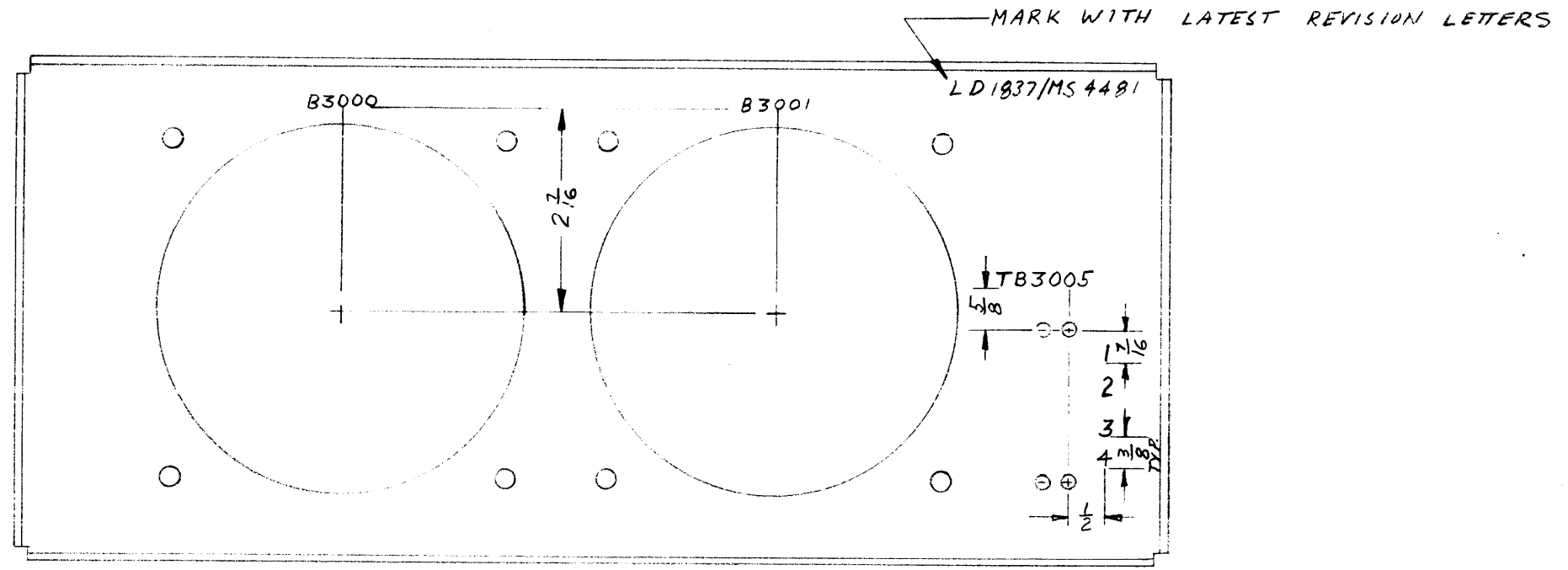
REF: MS 4413

REQ'D.	ITEM	PART NUMBER	DESCRIPTION	SYMBOL
B. YAP LIST OF MATERIAL				
MATERIAL		THE TECHNICAL MATERIEL CORP. MAMARONECK, NEW YORK		
FINISH		TITLE MARKING, PLATE, MTO, TOP FAN		
UNLESS OTHERWISE SPECIFIED DIMENSIONS ARE IN INCHES AND INCLUDE CHEMICALLY APPLIED OR PLATED FINISHES		DRAWN B1/1	DATE 25 Mar 65	FINAL APPROVAL <i>[Signature]</i>
		CHECKED JPM	DATE 7/22/65	DATE 5/3/67
		ELECT. DES. JPM	DATE	DATE
		MECH. DES.	DATE	DATE
DECIMALS .X ± .05 .XX ± .01 .XXX ± .005				FRACTIONS ± 1/64 ANGLES ± 0° 30'
TOLERANCES ± 1/64 ± 0° 30'				SHEET LD 1835
NOTES THE CONTENTS OF THIS DRAWING ARE THE EXCLUSIVE PROPERTY OF THE TECHNICAL MATERIEL CORP. ITS UNAUTHORIZED USE OR REPRODUCTION IN WHOLE OR IN PART IS STRICTLY FORBIDDEN.				REV. LTR. Ø

1	TSTE 10K / AX 563	A 5010
Q'TY./UNIT	MODEL USED ON	ASS'Y. NO.
SCALE	CODE	

LD 1837

REVISIONS						
SYM	DESCRIPTION	DATE	E.M.N. NO.	DRAFT	CHKD	APPD
Ø	ORIGINAL RELEASE FOR PRODUCTION	5/13/67	Ø	CV		<i>[Signature]</i>



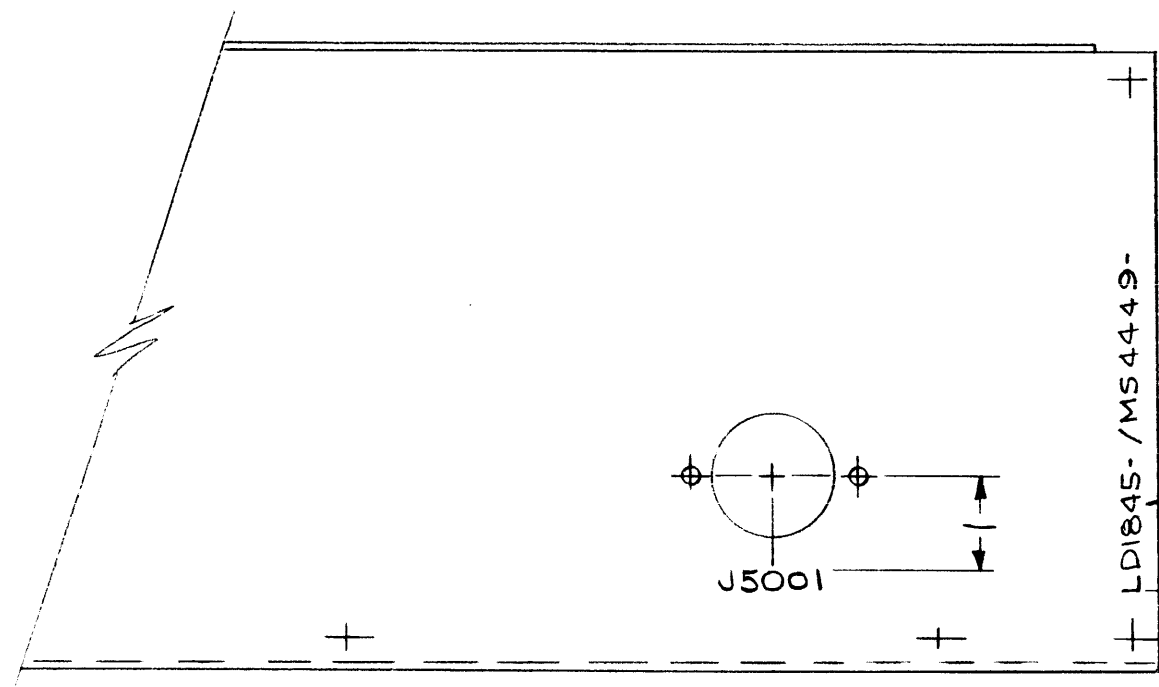
MARKING PROCESS: AS PER TMC SPECIFICATION S-727.

LETTERING: 1/8 HIGH BLACK GOTHIC, LOCATED AS SHOWN.

REF: MS 4481

1	TSTE 10K/AX 563	A4226
Q'TY./UNIT	MODEL USED ON	ASS'Y. NO.
SCALE	CODE	

REQ'D.	ITEM	PART NUMBER	DESCRIPTION	SYMBOL
B.N.A.P. LIST OF MATERIAL				
MATERIAL			THE TECHNICAL MATERIEL CORP. MAMARONECK, NEW YORK	
FINISH			TITLE MARKING, PLATE, MTG, REAR FAN	
UNLESS OTHERWISE SPECIFIED DIMENSIONS ARE IN INCHES AND INCLUDE CHEMICALLY APPLIED OR PLATED FINISHES			DRAWN <i>[Signature]</i>	DATE 29 Mar 65
DECIMALS .X ± .05 .XX ± .01 .XXX ± .005			CHECKED <i>[Signature]</i>	DATE 7/22/65
FRACTIONS ± 1/64 ANGLES ± 0° 30'			ELECT. DES. <i>[Signature]</i>	DATE
TOLERANCES			MECH. DES. <i>[Signature]</i>	DATE
THE CONTENTS OF THIS DRAWING ARE THE EXCLUSIVE PROPERTY OF THE TECHNICAL MATERIEL CORP. ITS UNAUTHORIZED USE OR REPRODUCTION IN WHOLE OR IN PART IS STRICTLY FORBIDDEN.			FINAL APPROVAL <i>[Signature]</i> DATE 5/16/67	
NOTES			SHEET LD 1837	
			REV. LTR.	

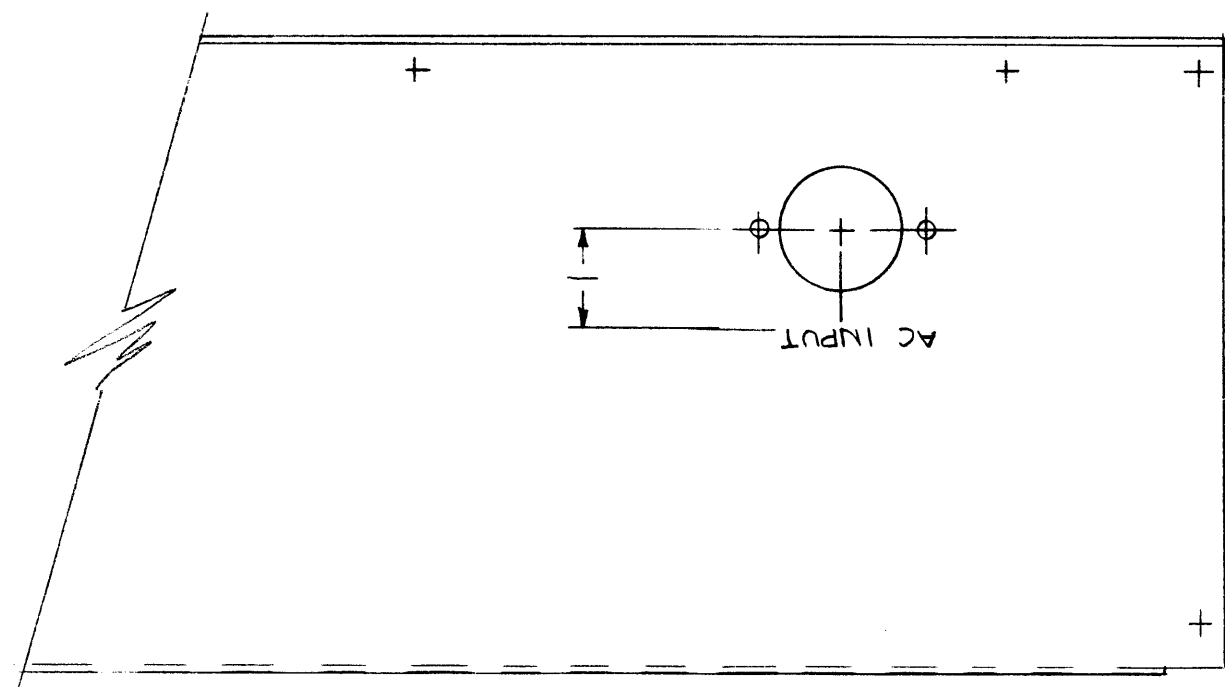


REVISIONS						
SYM	DESCRIPTION	DATE	E.M.N. NO.	DRAFT	CHKD	APPD
Ø	ORIGINAL RELEASE FOR PRODUCTION	4/27/65	AA	AL		

LD1845 Ø

MARK TMC PT NO W/LATEST REVISION LETTERS

MARKING PROCESS: AS PER TMC SPECIFICATION S-727.
 LETTERING: 1/8 HIGH BLACK GOTHIC, LOCATED AS SHOWN.



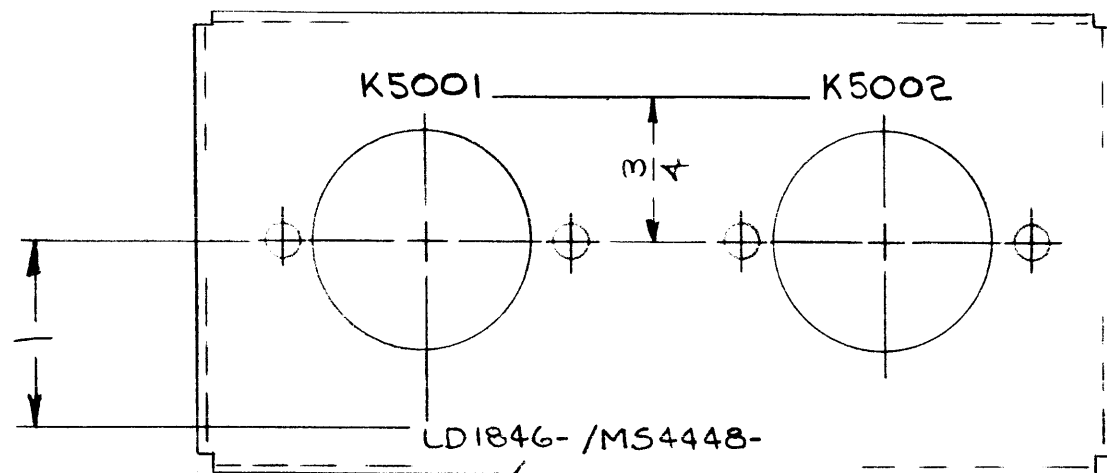
REF: MS4449

1	RTTA-1	
Q'TY./UNIT	MODEL USED ON	ASS'Y. NO.
SCALE 1:2	CODE A	

REQ'D.	ITEM	PART NUMBER	DESCRIPTION	SYMBOL
F.EATON LIST OF MATERIAL				
MATERIAL		THE TECHNICAL MATERIEL CORP. MAMARONECK, NEW YORK		
FINISH		TITLE MARKING, PLATE, REAR MARKING PROCESS PER TMC SPEC 5727		
UNLESS OTHERWISE SPECIFIED DIMENSIONS ARE IN INCHES AND INCLUDE CHEMICALLY APPLIED OR PLATED FINISHES		DRAWN 4-26-65	DATE	FINAL APPROVAL 4/29/65
DECIMALS .X ± .05 .XX ± .01 .XXX ± .005		CHECKED 4/27/65	DATE	
FRACTIONS ± 1/64 ANGLES ± 0° 30'		ELECT. DES.	DATE	
TOLERANCES		MECH. DES. MP	DATE 4-28-65	
LD1845				Ø
SHEET				REV. LTR.

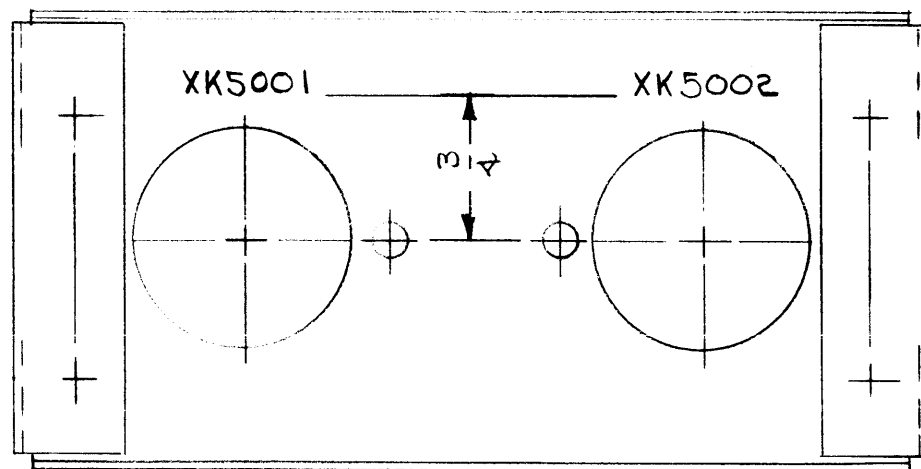
NOTES

THE CONTENTS OF THIS DRAWING ARE THE EXCLUSIVE PROPERTY OF THE TECHNICAL MATERIEL CORP. ITS UNAUTHORIZED USE OR REPRODUCTION IN WHOLE OR IN PART IS STRICTLY FORBIDDEN.



~EXTERNAL VIEW~

MARK TMC PT NO.
W/LATEST REV.
LETTERS.



~INTERNAL VIEW~

SYM	REVISIONS					
	DESCRIPTION	DATE	E.M.N. NO.	DRAFT	CHKD	APPD
Ø	ORIGINAL RELEASE FOR PRODUCTION	4/27/65	M	<i>EL</i>		

LD1846 Ø

MARKING PROCESS: AS PER TMC SPECIFICATION S-727.

LETTERING: 1/8 HIGH BLACK GOTHIC, LOCATED AS SHOWN.

REF: MS4448

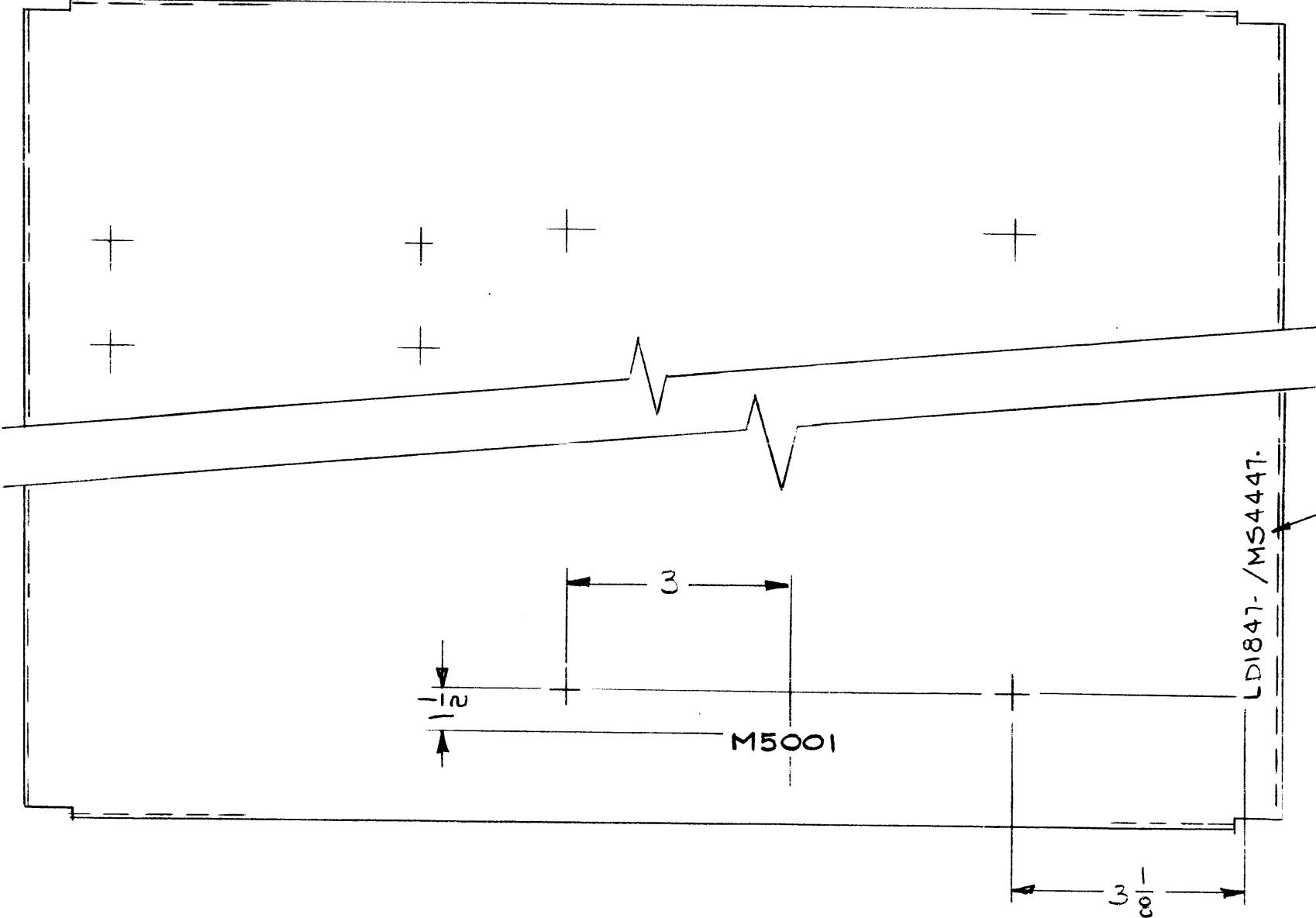
1	RTTA-1	
Q'TY./UNIT	MODEL USED ON	ASS'Y. NO.
SCALE 1:1	CODE A	

THE CONTENTS OF THIS DRAWING ARE THE EXCLUSIVE PROPERTY OF THE TECHNICAL MATERIEL CORP. ITS UNAUTHORIZED USE OR REPRODUCTION IN WHOLE OR IN PART IS STRICTLY FORBIDDEN.

REQ'D.	ITEM	PART NUMBER	DESCRIPTION	SYMBOL
F. EATON LIST OF MATERIAL				
MATERIAL		THE TECHNICAL MATERIEL CORP. MAMARONECK, NEW YORK		
FINISH		TITLE MARKING, CHASSIS, RELAY MTG. MARKING PROCESS PER TMC SPEC 3727		
UNLESS OTHERWISE SPECIFIED DIMENSIONS ARE IN INCHES AND INCLUDE CHEMICALLY APPLIED OR PLATED FINISHES		DRAWN <i>[Signature]</i>	DATE 4/26/65	FINAL APPROVAL <i>[Signature]</i>
		CHECKED <i>[Signature]</i>	DATE 4/27/65	DATE 4/28/65
DECIMALS .X ± .05 .XX ± .01 .XXX ± .005		TOLERANCES		DATE 4-28-65
		FRACTI NS ± 1/64 ANGLES ± 0° 30'		DATE
NOTES		ELECT. DES. <i>[Signature]</i>		DATE
		MECH. DES. <i>[Signature]</i>		DATE
		SHEET		REV. LTR.
		LD1846		Ø

LD1847

REVISIONS						
SYM	DESCRIPTION	DATE	E.M.N. NO.	DRAFT	CHKD	APPD
Ø	ORIGINAL RELEASE FOR PRODUCTION	4/27/65	---	<i>AK</i>		



MARKING PROCESS: AS PER TMC SPECIFICATION S-727.
 LETTERING: 1/8 HIGH BLACK GOTHIC, LOCATED AS SHOWN.

MARK TMC PT NO.
 W/LATEST REV.
 LETTERS.

REF: MS4447

1	RTTA-1	
QTY./UNIT	MODEL USED ON	ASS'Y. NO.
SCALE DO NOT SCALE	CODE A	

NOTES

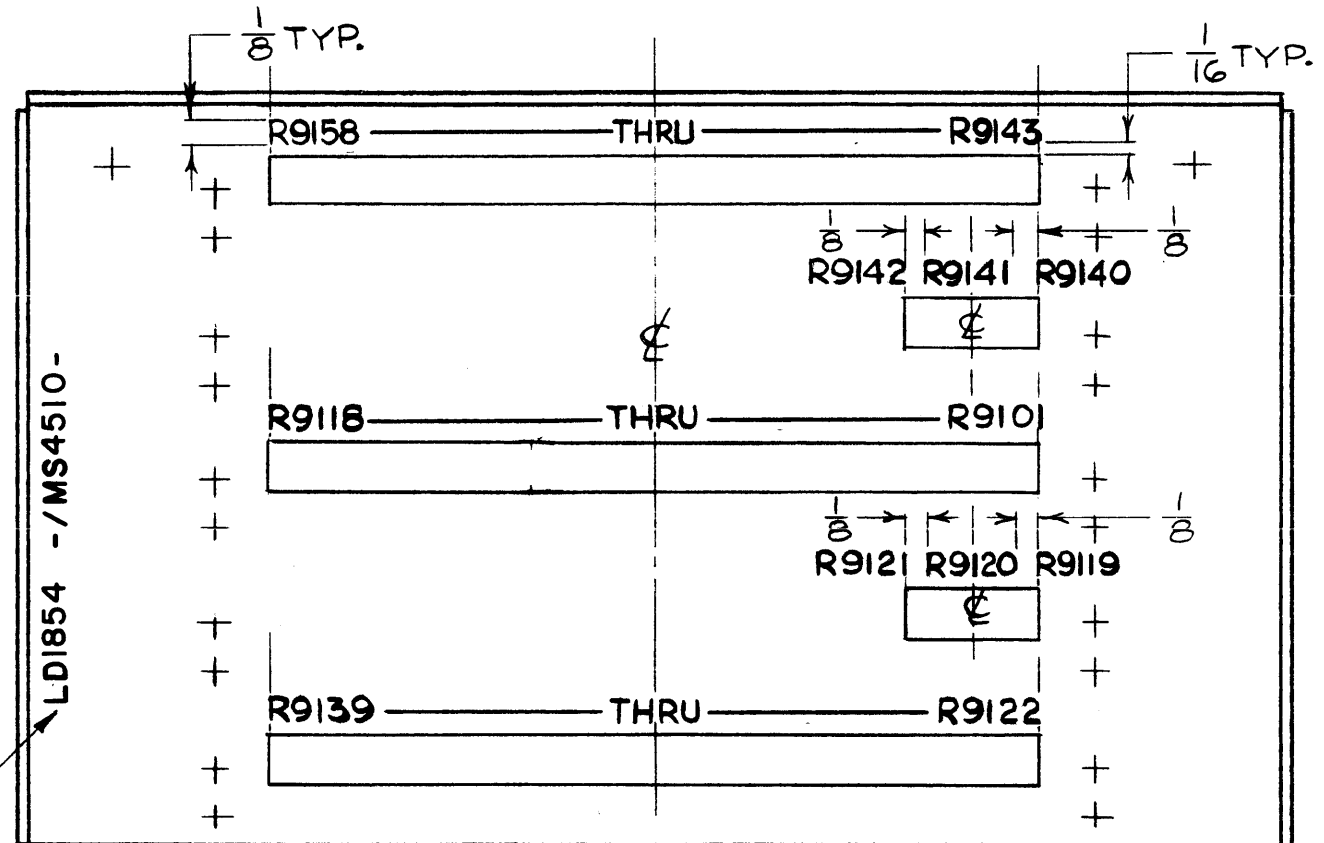
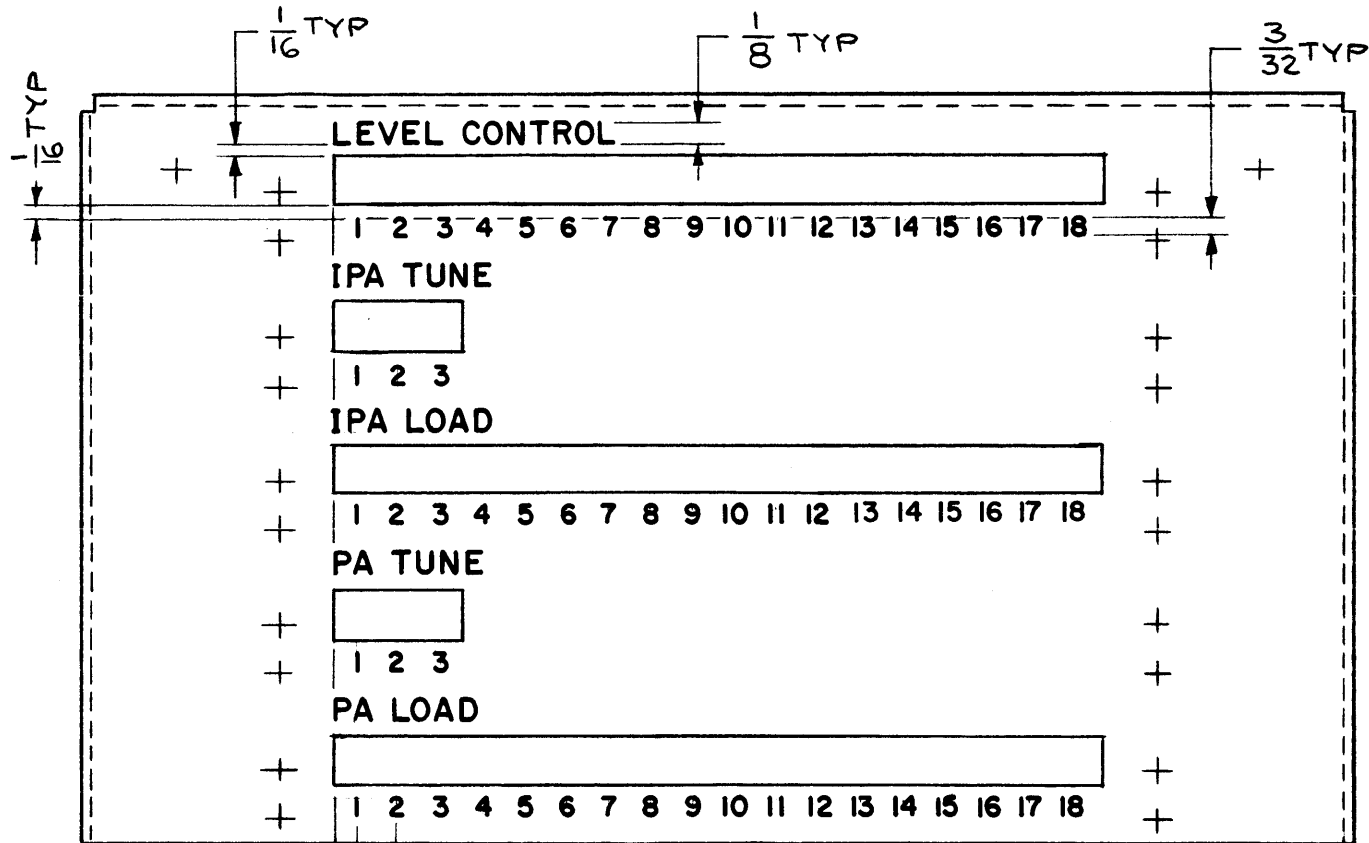
THE CONTENTS OF THIS DRAWING ARE THE EXCLUSIVE PROPERTY OF THE TECHNICAL MATERIEL CORP. ITS UNAUTHORIZED USE OR REPRODUCTION IN WHOLE OR IN PART IS STRICTLY FORBIDDEN.

REQ'D.	ITEM	PART NUMBER	DESCRIPTION	SYMBOL
F. EATON LIST OF MATERIAL				
MATERIAL		THE TECHNICAL MATERIEL CORP. MAMARONECK, NEW YORK		
FINISH		TITLE MARKING, CHASSIS, MAIN MARKING PROCESS: PER TMC SPEC S727		
UNLESS OTHERWISE SPECIFIED DIMENSIONS ARE IN INCHES AND INCLUDE CHEMICALLY APPLIED OR PLATED FINISHES		DRAWN <i>[Signature]</i>	DATE 4-26-65	FINAL APPROVAL <i>[Signature]</i>
DECIMALS .X ± .05 .XX ± .01 .XXX ± .005		TOLERANCES		DATE 4-28-65
		FRACTIONS ± 1/64 ANGLES ± 0° 30'		DATE 4/28/65
		ELECT. DES.		DATE
		MECH. DES. <i>MP</i>		DATE
		SHEET		REV. LTR.

LD1847

LD1854

REVISIONS					
SYM	DESCRIPTION	DATE	E.M.N. NO.	DRAFT	CHKD APPD
X1	LETTERING WAS BLACK	4-22-64	X1	SRG	CH
X2	ADDED RESISTOR SYMBOLS	6-8-65	X2	NLA	
Ø	ORIGINAL RELEASE FOR PRODUCTION	5-8-67	Ø	RG	



MARK TMC P/N 1/8 HIGH
BLACK GOTHIC WITH LATEST
REVISION LETTERS

MARKING PROCESS: AS PER TMC SPECS. S727
LETTERING: 3/32 & 1/8 HIGH WHITE GOTHIC,
LOCATED AS SHOWN.

1	TSTE10K	
Q'TY./UNIT	MODEL USED ON	ASS'Y. NO.
SCALE 1:1	CODE A	

THE CONTENTS OF THIS DRAWING ARE THE EXCLUSIVE PROPERTY OF THE TECHNICAL MATERIEL CORP. ITS UNAUTHORIZED USE OR REPRODUCTION IN WHOLE OR IN PART IS STRICTLY FORBIDDEN.

REF: MS4510

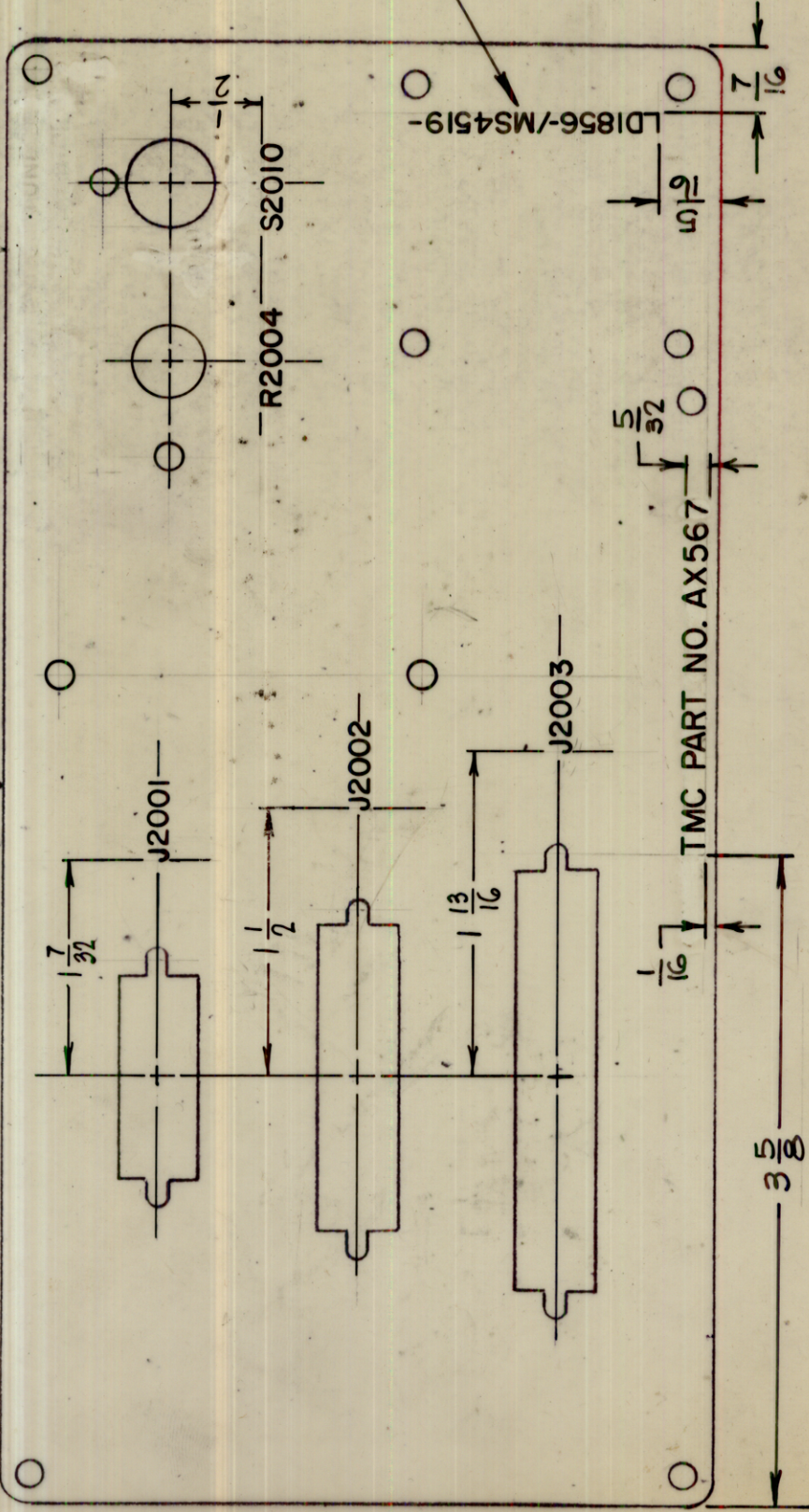
REQ'D.	ITEM	PART NUMBER	DESCRIPTION	SYMBOL
F. BUDETTI LIST OF MATERIAL				
MATERIAL		THE TECHNICAL MATERIEL CORP. MAMARONECK, NEW YORK		
FINISH		TITLE MARKING, CHASSIS, MTG., RESISTOR MARKING PROCESS: TMC S727		
UNLESS OTHERWISE SPECIFIED DIMENSIONS ARE IN INCHES AND INCLUDE CHEMICALLY APPLIED OR PLATED FINISHES		DRAWN JB	DATE 4.5.65	FINAL APPROVAL [Signature] 5/5/67
DECIMALS .X ± .05 .XX ± .01 .XXX ± .005		CHECKED	DATE	
FRACTIONS ± 1/64 ANGLES ± 0° 30'		ELECT. DES. [Signature]	DATE	
TOLERANCES		MECH. DES. [Signature]	DATE	
SHEET LD1854				REV. LTR. Ø

NOTES

LD1856

SYM	DESCRIPTION	DATE	E.M.N. NO.	DRAFT	CHKD	APPD
Ø	ORIGINAL Release For Production.	4-21-65		HHA		
A	TONE OVER RISE, METER ADJ. ADDED. PIN WAS AX568	6-4-65	14196	£	QVB	JEB
B	LETTERING METER ADJ. TUNE OVER RISE OFF DELETED	6-22-65	14244	DVV	QVB	MMN

REVISIONS



UNLESS OTHERWISE SPECIFIED:
 MARKING PROCESS: AS PER TMC SPECIFICATION S-727.
 LETTERING: 1/8 HIGH BLACK GOTHIC, LOCATED AS SHOWN.

MARK TMC PART NO. W/LATEST REV. LETTER,
 LOCATED AS SHOWN

REF: MS4519

REQ'D.	ITEM	PART NUMBER	DESCRIPTION	SYMBOL
	M. ZETENA		LIST OF MATERIAL	
	MATERIAL		THE TECHNICAL MATERIEL CORP. MAMARONECK, NEW YORK	
	FINISH		MARKING, PLATE, READ, RCVR	
	UNLESS OTHERWISE SPECIFIED DIMENSIONS ARE IN INCHES AND INCLUDE CHEMICALLY APPLIED OR PLATED FINISHES			
	DECIMALS .X ± .05 .XX ± .01 .XXX ± .005			
	FRACTIONS ± 1/64 ANGLES ± 0° 30'			
	TOLERANCES			
	DRWN H. AUSTIN	DATE 4-20-65	FINAL APPROVAL F. E. Eaton	DATE 4/22/65
	CHECKED QVB	DATE 4/22/65		
	ELECT. DES.	DATE		
	MECH. DES. M P Z	DATE 4-22-65		
			LD1856	B
			SHEET	REV. LTR.

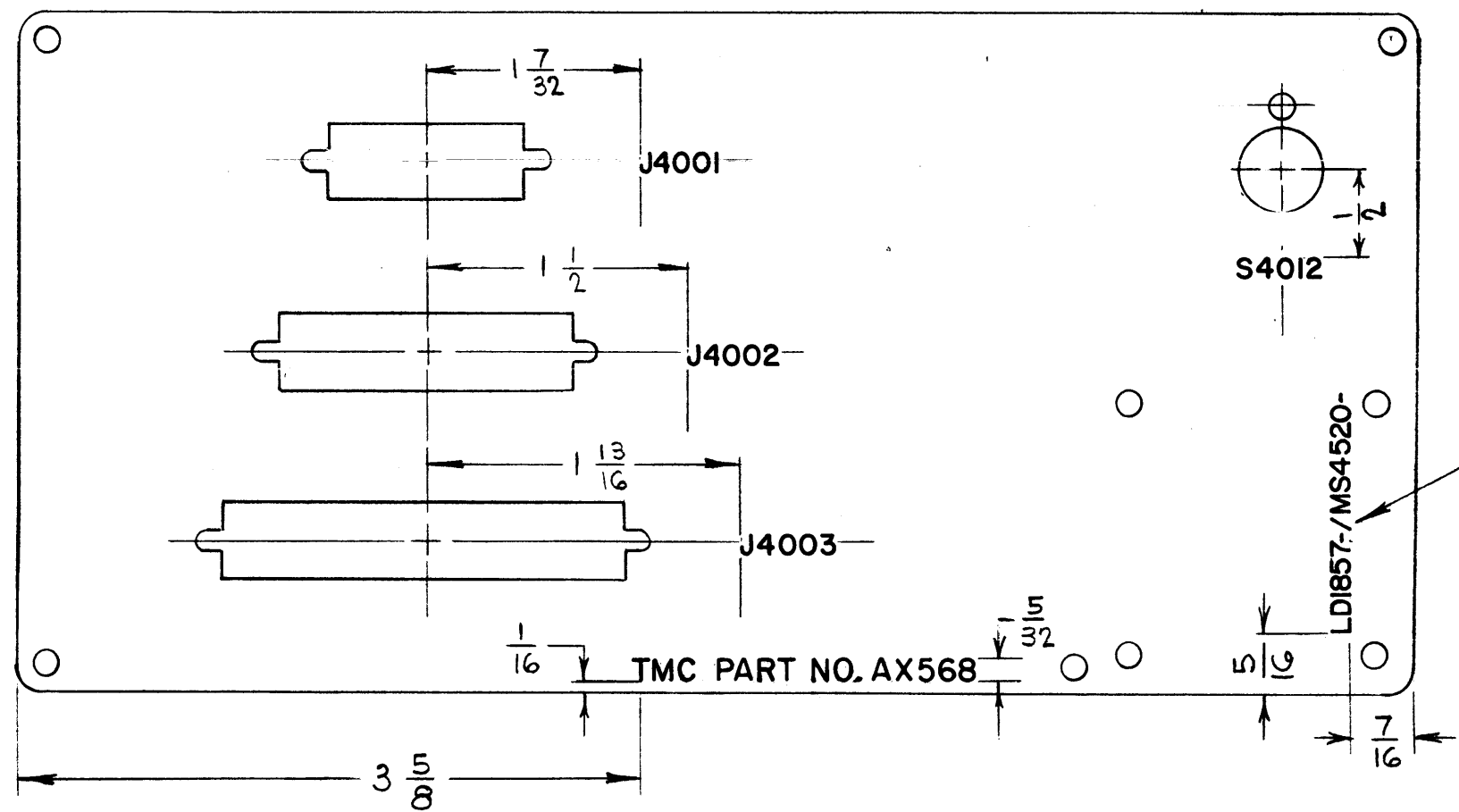
QTY./UNIT	1	LRCC-1	MODEL USED ON	AX 567	ASBY. NO.
SCALE	1:1	CODE			

NOTES

THE CONTENTS OF THIS DRAWING ARE THE EXCLUSIVE PROPERTY OF THE TECHNICAL MATERIEL CORP. ITS UNAUTHORIZED USE OR REPRODUCTION IN WHOLE OR IN PART IS STRICTLY FORBIDDEN.

LD1857 B

REVISIONS					
SYM	DESCRIPTION	DATE	E.M.N. NO.	DRAFT	CHKD APPD
Ø	ORIGINAL RELEASE FOR PRODUCTION	4/21/65		HKA	
A	TUNE OVER RIDE, OFF ADDED TO S4012	6/4/65	14196	☒	JCB JEE
B	LETTERING "TUNE OVER RIDE," "OFF" DELETED	6/22/65	14244	DVV	JCB MMH



UNLESS OTHERWISE SPECIFIED:
 MARKING PROCESS: AS PER TMC SPECIFICATION S-727.
 LETTERING: 1/8 HIGH BLACK GOTHIC, LOCATED AS SHOWN.

MARK TMC PART NO. W/LATEST REV. LETTER, LOCATED AS SHOWN.

REF.: MS4520

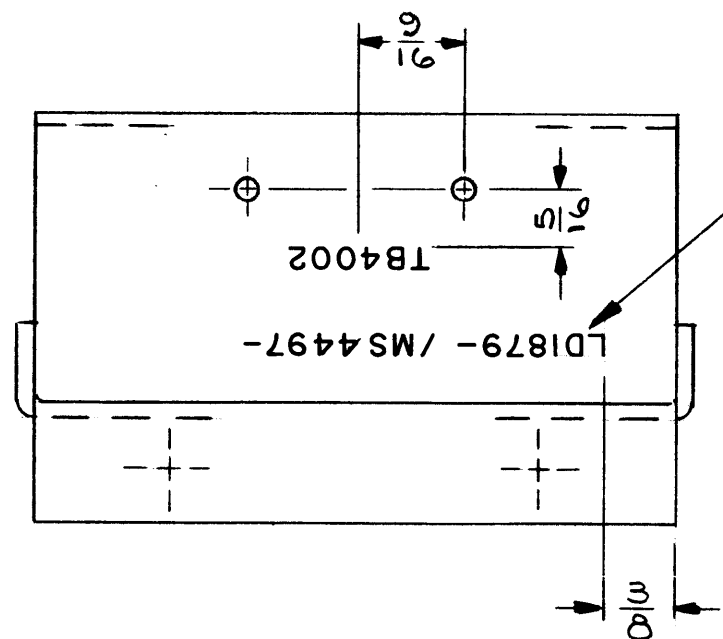
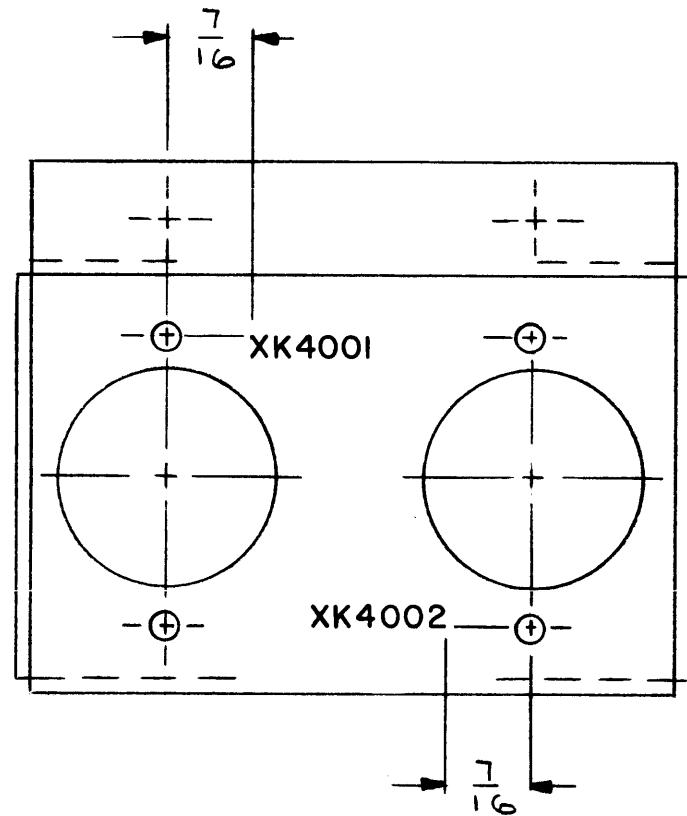
REQ'D.	ITEM	PART NUMBER	DESCRIPTION	SYMBOL
M. ZETENA LIST OF MATERIAL				
MATERIAL		THE TECHNICAL MATERIEL CORP. MAMARONECK, NEW YORK		
FINISH		TITLE MARKING, PLATE, REAR, XMTR		
UNLESS OTHERWISE SPECIFIED DIMENSIONS ARE IN INCHES AND INCLUDE CHEMICALLY APPLIED OR PLATED FINISHES		DRAWN H. AUSTIN DATE 4-20-65	FINAL APPROVAL <i>[Signature]</i> DATE 4/22/65	DATE 4/23/65
DECIMALS .X ± .05 .XX ± .01 .XXX ± .005		TOLERANCES FRACTIONS ± 1/64 ANGLES ± 0° 30'		SHEET LD1857 REV. LTR. B
ELECT. DES.		MECH. DES.		DATE 4-22-65

Q'TY./UNIT	MODEL USED ON	ASS'Y. NO.
SCALE	CODE	
1	LRCM-1	AX568
1:1		

THE CONTENTS OF THIS DRAWING ARE THE EXCLUSIVE PROPERTY OF THE TECHNICAL MATERIEL CORP. ITS UNAUTHORIZED USE OR REPRODUCTION IN WHOLE OR IN PART IS STRICTLY FORBIDDEN.

NOTES

- BOTTOM VIEW -



MARK TMC PT. NO. W/LATEST REV. LETTER

LD1879 Ø

REVISIONS						
SYM	DESCRIPTION	DATE	E.M.N. NO.	DRAFT	CHKD	APPD
Ø	ORIG. RELEASE FOR PRODUCTION	4/30/65		JL		

- UNLESS OTHERWISE SPECIFIED -

1- MARKING PROCESS: AS PER TMC SPECIFICATION S-727.

2- LETTERING: 1/8 HIGH BLACK GOTHIC, LOCATED AS SHOWN.

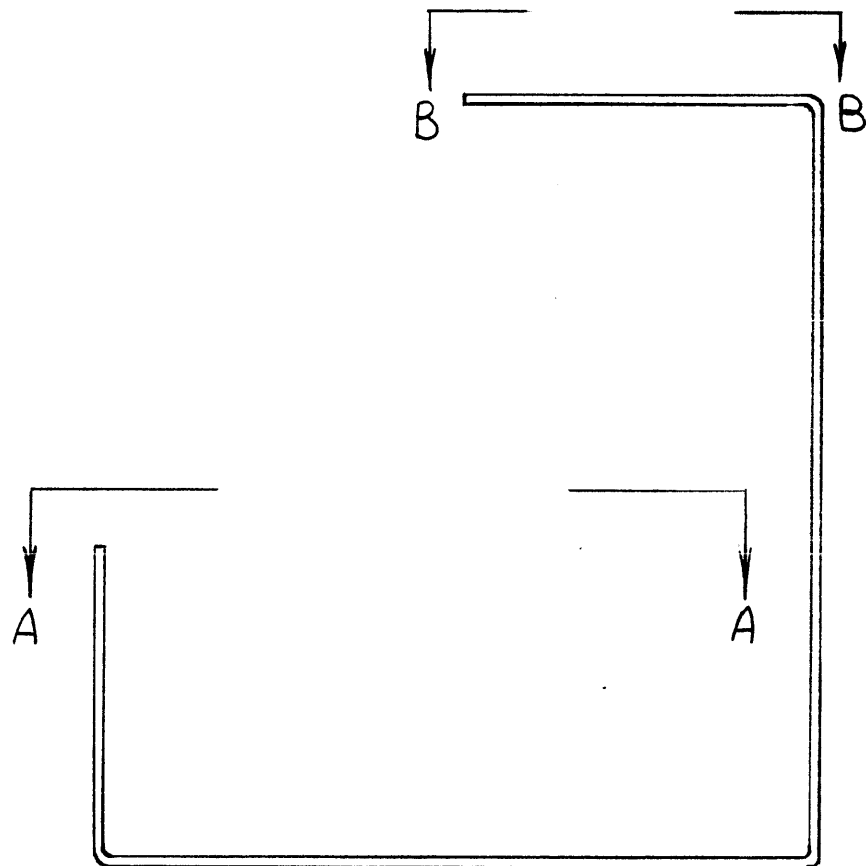
REF. : MS 44 97

REQ'D.	ITEM	PART NUMBER	DESCRIPTION	SYMBOL
F. E. EATON LIST OF MATERIAL				
MATERIAL		THE TECHNICAL MATERIEL CORP. MAMARONECK, NEW YORK		
FINISH		TITLE MARKING - BRACKET, RELAY MTG		
UNLESS OTHERWISE SPECIFIED DIMENSIONS ARE IN INCHES AND INCLUDE CHEMICALLY APPLIED OR PLATED FINISHES			DRAWN J. LESHINSKI DATE 4/29/65 CHECKED <i>[Signature]</i> DATE ELECT. DES. DATE MECH. DES. <i>[Signature]</i> DATE 7/9/65	FINAL APPROVAL <i>[Signature]</i> DATE 4/30/65 SHEET LD1879 REV. LTR. Ø

Q'TY./UNIT	MODEL USED ON	ASS'Y. NO.
1	LRCB-1	
1	LRCB-1	
SCALE	CODE	
1/1		

THE CONTENTS OF THIS DRAWING ARE THE EXCLUSIVE PROPERTY OF THE TECHNICAL MATERIEL CORP. ITS UNAUTHORIZED USE OR REPRODUCTION IN WHOLE OR IN PART IS STRICTLY FORBIDDEN.

NOTES

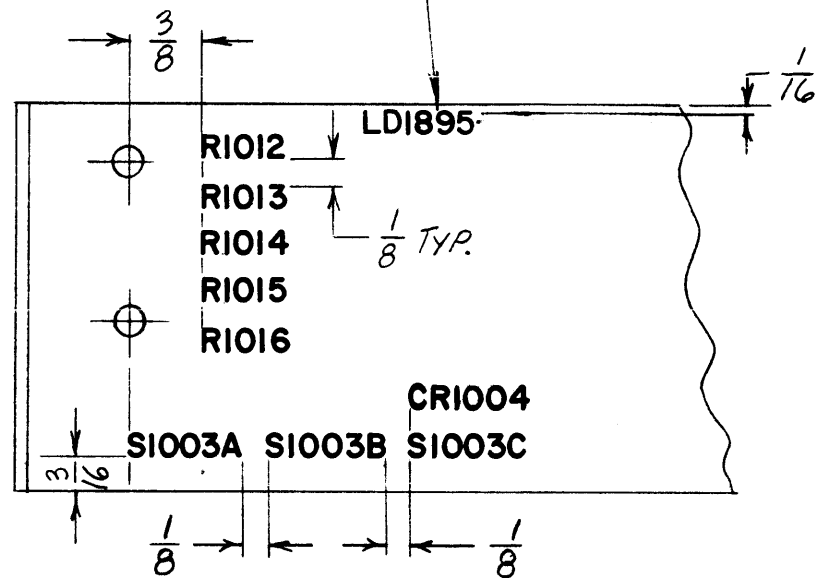


LD1895

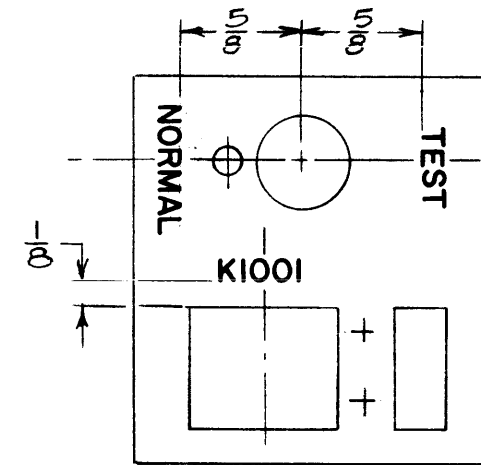
REVISIONS						
SYM	DESCRIPTION	DATE	E.M.N. NO.	DRAFT	CHKD	APPD
Ø	ORIGINAL RELEASE FOR PRODUCTION	7/27/66	Ø	CV		

MARKING PROCESS: AS PER TMC SPECIFICATION S-727.
 LETTERING: 1/8 HIGH BLACK GOTHIC, LOCATED AS SHOWN.

MARK TMC PART NO. W/LATEST REV. LETTER, LOCATED AS SHOWN



VIEW A-A



VIEW B-B

REF.: MS4563

REQ'D.	ITEM	PART NUMBER	DESCRIPTION	SYMBOL
ZETENA LIST OF MATERIAL				
MATERIAL		THE TECHNICAL MATERIEL CORP. MAMARONECK, NEW YORK		
FINISH		TITLE MARKING, BRACKET, MOUNTING AUTO. SWITCH		
UNLESS OTHERWISE SPECIFIED DIMENSIONS ARE IN INCHES AND INCLUDE CHEMICALLY APPLIED OR PLATED FINISHES		DRAWN H. AUSTIN	DATE 5-6-65	FINAL APPROVAL <i>[Signature]</i>
		CHECKED <i>[Signature]</i>	DATE	DATE 7/27/66
DECIMALS .X ± .05 .XX ± .01 .XXX ± .005		ELECT. DES.		DATE 7-26-66
FRACTIONS ± 1/64 ANGLES ± 0° 30'		MECH. DES. <i>[Signature]</i>		DATE
TOLERANCES		SHEET		REV. LTR. Ø

Q'TY./UNIT	MODEL USED ON	ASS'Y. NO.
SCALE 1:1	CODE	
THE CONTENTS OF THIS DRAWING ARE THE EXCLUSIVE PROPERTY OF THE TECHNICAL MATERIEL CORP. ITS UNAUTHORIZED USE OR REPRODUCTION IN WHOLE OR IN PART IS STRICTLY FORBIDDEN.		

NOTES