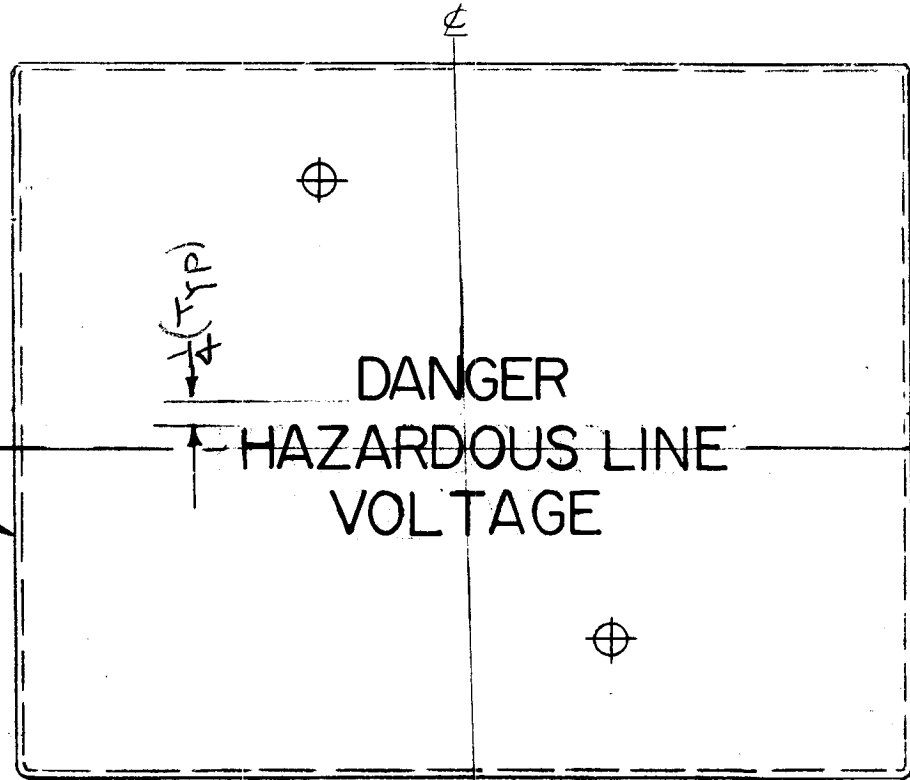


MARKING PROCESS: AS PER TMC SPECIFICATION S-727.

REQ. PER UNIT 2	USED ON		LD1800	B
	MODEL GPT-200K	ASS'Y. NO.		

LETTERING: 1/2 HIGH RED GOTHIC, LOCATED AS SHOWN.  
TWO OR THREE LINES OPTIONAL.



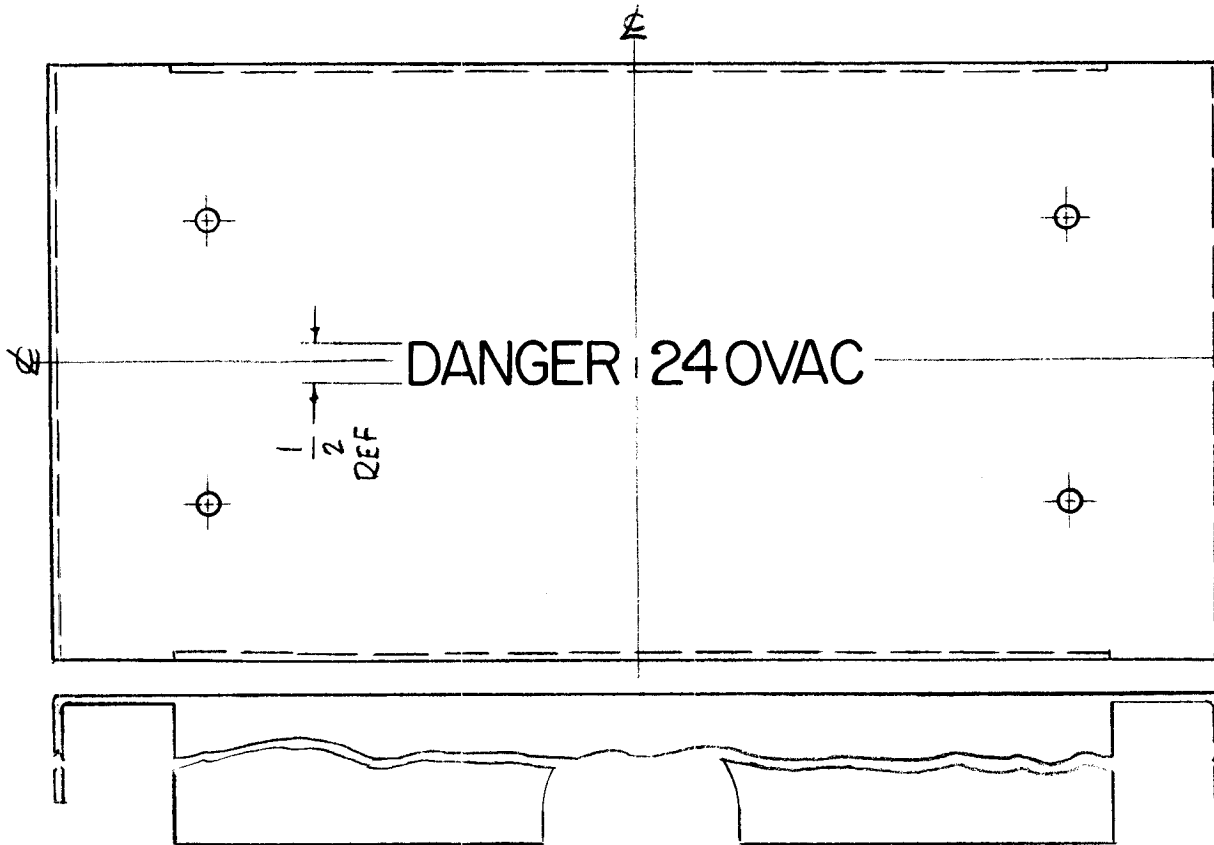
MARK TMC PART NO.  
LD1800/PX923- 1/8 HIGH  
GOTHIC W/LATEST  
REV. LETTER.  
(ON BOTTOM OF LIP.)

B	LETTERING RE LOCATED	8/21/67	18474	HG		FB	REF: PX 923						
A	(2) LIPS DELE; (2) HOLES ADD	11-28-66	17301	WVW	QCB	MM	REQ. ITEM	PART NO.	F. BUDETTI	DESCRIPTION	SYMBOL		
Ø	ORIGINAL RELEASE FOR PRODUCTION	4/20/65	M	SLG			STOCK SIZE		THE TECHNICAL MATERIEL CORP. MAMARONECK. NEW YORK				
X <sub>1</sub>	2 REQ PER UNIT ADDED	4-13-65		CJL			MATERIAL		MARKING, SHIELD, H.V. BKR				
X	EXP. RELEASE	2-23-65	X	SRG			FINISH & SPEC. N		MARKING PROCESS: AS PER TMC SPEC. S727				
SYM	DESCRIPTION	DATE	CH. NO.	DRAFTS	CHECKER	ENG. APP.	TYPE & TEMPER		HEAT TREAT. SPEC.	DRAWN	CHECKED	FINAL APPROVAL	
UNLESS OTHERWISE SPECIFIED DIMENSIONS ARE IN INCHES AND INCLUDE CHEMICALLY APPLIED OR PLATED FINISHES		SCALE		1/2:1			SRG	QCB					
DECIMALS .X ± .05 .XX ± .01 .XXX ± .005	TOLERANCES	FRACTIONS ± 1/64 ANGLES ± 0° 30'	CODE A									LD1800	B
							ELEC. DES. APP.		MECH. DES. APP.				

REQ. PER UNIT	USED ON			LD1801	Ø
	MODEL	ASS'Y. NO.	DATE		
2	GPT-200K		2-23-65		

MARKING PROCESS: AS PER TMC SPECIFICATION S-727.

LETTERING: 1/2 HIGH RED GOTHIC, LOCATED AS SHOWN.



MARK TMC PART NO. LD1801-PX924- 1/8 HIGH GOTHIC W/LATEST REV. LETTER. (ON THE INSIDE)

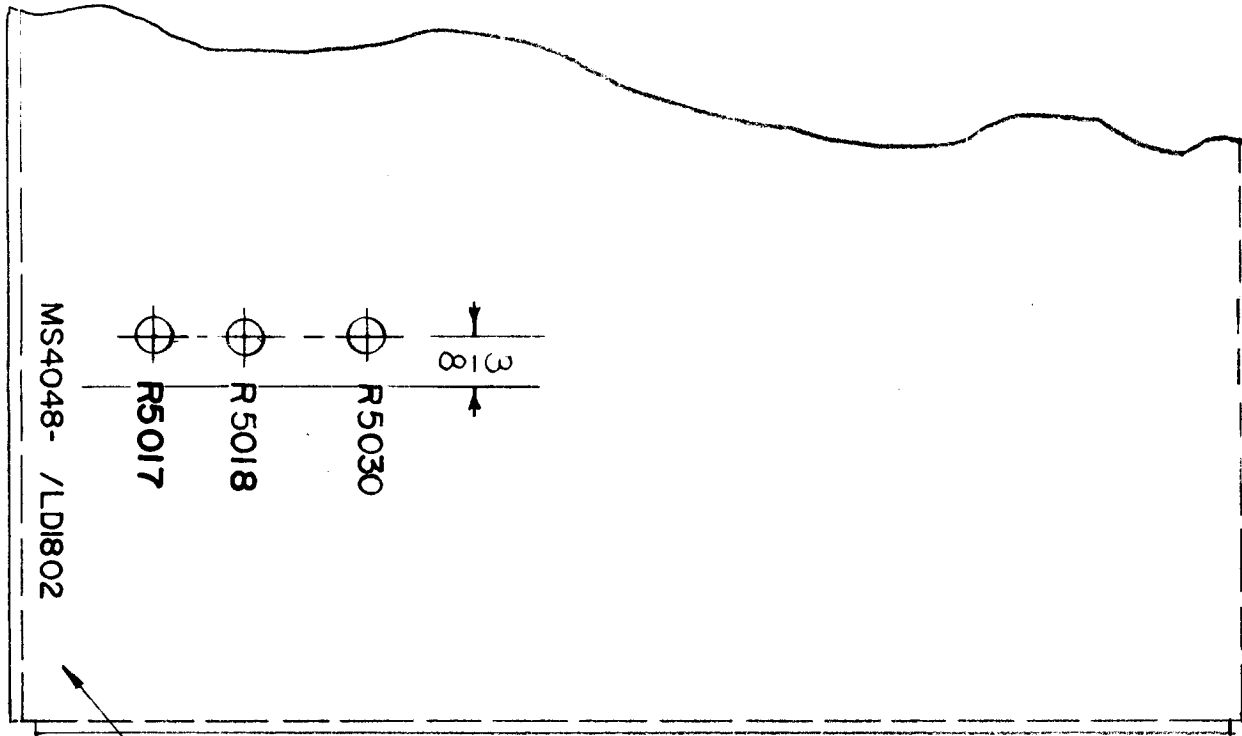
PX 924

SYM	DESCRIPTION	DATE	CH. NO.	DRAFTS	CHECKER	ENG. APP.	REQ. ITEM	PART NO.	F. BUDETTI DESCRIPTION	SYMBOL				
Ø	ORIGINAL RELEASE FOR PRODUCTION	4/20/65	11	SRG					<b>THE TECHNICAL MATERIEL CORP.</b> MAMARONECK. NEW YORK MARKING, SHIELD, TERM. BD MARKING PROCESS: AS PER TMC SPEC. S727					
XI	SIDE VIEW DELETED, BOTTOM VIEW ADDED	4/12/65		CJL				STOCK SIZE						
X	EXP. RELEASE	2-23-65	X	SRG				MATERIAL						
UNLESS OTHERWISE SPECIFIED DIMENSIONS ARE IN INCHES AND INCLUDE CHEMICALLY APPLIED OR PLATED FINISHES		SCALE	1/2:1											
DECIMALS .X ± .05 .XX ± .01 .XXX ± .005		FRACTIONS ± 1/64 ANGLES ± 0° 30'		TOLERANCES		CODE A			TYPE & TEMPER	HEAT TREAT. SPEC.	DRAWN SRG	CHECKED JCB	FINAL APPROVAL ØVS	
							FINISH & SPEC. NO.		ELEC. DES. APP.	MECH. DES. APP.	LD1801	Ø		

REQ. PER UNIT	USED ON			LD1802	A
	MODEL	ASS'Y. NO.	DATE		
1	RTMU-1		3/10/65		

MARKING PROCESS: AS PER TMC SPECIFICATION S-727.

LETTERING: 1/8 HIGH BLACK GOTHIC, LOCATED AS SHOWN.



MARK TMC PART NO. 1/8 HIGH GOTHIC WITH LATEST REVISION LETTER.

REF: MS4048

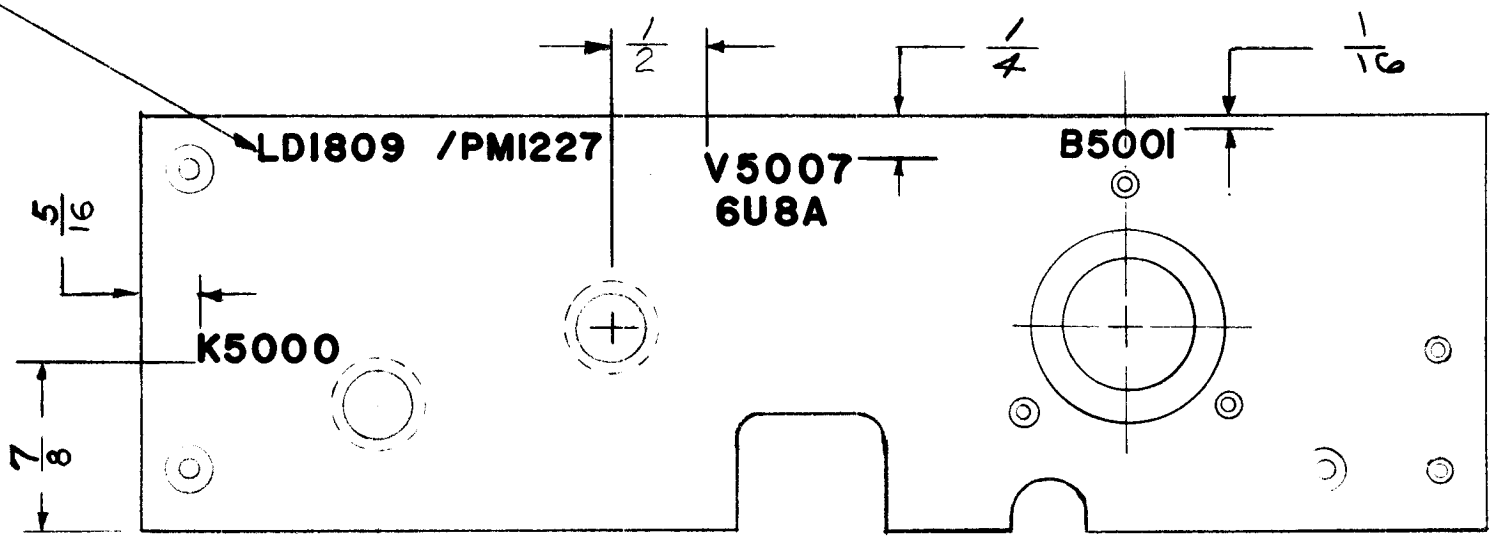
REQ.	ITEM	PART NO.	EATON	DESCRIPTION	SYMBOL	
			THE TECHNICAL MATERIEL CORP. MAMARONECK, NEW YORK			
A			BRACKET, MTG. SUPPORT			
Ø						
SYM	DESCRIPTION	DATE	CH. NO.	DRAFTS	CHECKER	ENG. APP.
UNLESS OTHERWISE SPECIFIED DIMENSIONS ARE IN INCHES AND INCLUDE CHEMICALLY APPLIED OR PLATED FINISHES		SCALE	1:1			
DECIMALS .X ± .05 .XX ± .01 .XXX ± .005	TOLERANCES	FRACTIONS ± 1/64 ANGLES ± 0° 30'	CODE			
				TYPE & TEMPER	HEAT TREAT. SPEC.	FINISH & SPEC. NO.
				DRAWN	CHECKED	FINAL APPROVAL
				JZ	JCS	RDC
				JEE 3/11/65	W.J. 3/11/65	LD1802 A





REQ. PER UNIT	USED ON			LD1809	A
	MODEL	ASS'Y. NO.	DATE		
	AFCR-3		3/22/65		

MARK TMC PART N<sup>o</sup> WITH LATEST REV. LETTER.



~ FRONT VIEW SHOWN ~

MARKING PROCESS: AS PER TMC SPECIFICATION S-727.

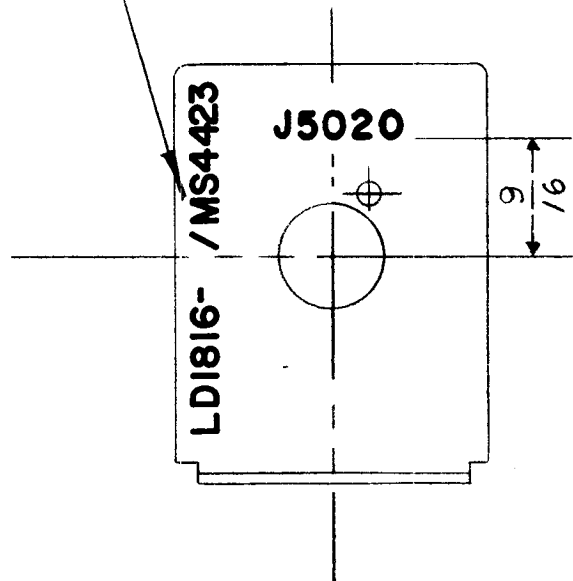
LETTERING: 1/8 HIGH BLACK GOTHIC, LUSTERLESS LOCATED AS SHOWN.

(REF PMI227)

REQ.	ITEM	PART NO.					DESCRIPTION			SYMBOL		
A	B5001 LETTERING ADDED	8-17-65	14571	E	OK	THE TECHNICAL MATERIEL CORP. MAMARONECK, NEW YORK						
Ø	ORIGINAL RECEIVED	3-25-65	2	RU	RU	STOCK SIZE						
X	EXP. RELEASE	3-23-65	1	CL	RU	MATERIAL			MARKING, FRONT GEAR PLATE			
SYM	DESCRIPTION	DATE	CH. NO.	DRAFTS	CHECKER	ENG. APP.	TYPE & TEMPER					
UNLESS OTHERWISE SPECIFIED DIMENSIONS ARE IN INCHES AND INCLUDE CHEMICALLY APPLIED OR PLATED FINISHES		SCALE		FULL								
DECIMALS .X ± .05 .XX ± .01 .XXX ± .005		FRACTIONS ± 1/64 ANGLES ± 0° 30'		TOLERANCES		CODE	HEAT TREAT. SPEC.		CLANZA	OK	OK	FINAL APPROVAL
							FINISH & SPEC. NO.		ELEC. DES. APP.	MECH. DES. APP.	LD1809	A

REQ. PER UNIT	USED ON			LD1816	Ø
	MODEL	ASS'Y. NO.	DATE		
1	AFCR-3		3/22/65		

MARK TMC PART NO WITH LATEST REV. LETTER.



NOTE:  
FOR CLARITY, ONLY THOSE HOLES THAT PERTAIN TO MARKINGS ARE SHOWN.

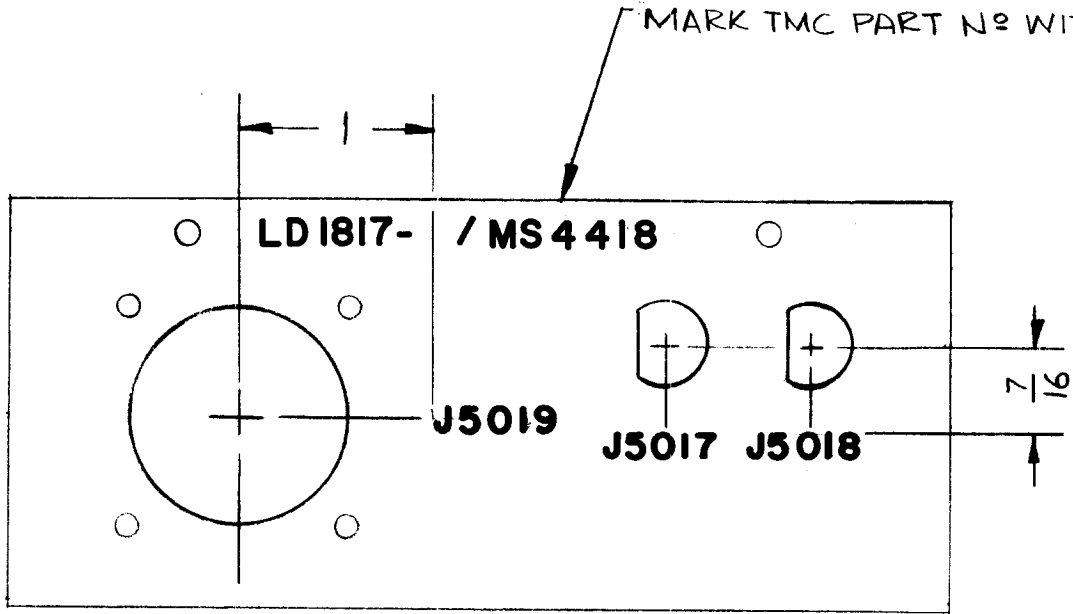
MARKING PROCESS: AS PER TMC SPECIFICATION S-727.

LETTERING: 1/8 HIGH BLACK GOTHIC, LUSTERLESS LOCATED AS SHOWN.

(REF. MS 4423)

							REQ. ITEM	PART NO.	DESCRIPTION	SYMBOL
							STOCK SIZE		THE TECHNICAL MATERIEL CORP. MAMARONECK. NEW YORK	
Ø			3-25-65	2	RU	<i>[Signature]</i>	MARKING, HOUSING			
X	EXP. RELEASE		3-23-65	1	CL	<i>[Signature]</i>				
SYM	DESCRIPTION	DATE	CH. NO.	DRAFTS	CHECKER	ENG. APP.	MATERIAL			
UNLESS OTHERWISE SPECIFIED DIMENSIONS ARE IN INCHES AND INCLUDE CHEMICALLY APPLIED OR PLATED FINISHES		SCALE		FULL			CLANZA	<i>[Signature]</i>	<i>[Signature]</i>	
		TYPE & TEMPER	HEAT TREAT. SPEC.		DRAWN	CHECKED	FINAL APPROVAL			
DECIMALS .X ± .05 .XX ± .01 .XXX ± .005		TOLERANCES		FRACTIONS ± 1/64 ANGLES ± 0° 30'		CODE	FINISH & SPEC. NO.		ELEC. DES. APP.	MECH. DES. APP.
									LD1816	Ø

REQ. PER UNIT	USED ON			LD1817	Ø
	MODEL	ASS'Y. NO.	DATE		
1	AFCR-3		3-23-65		



NOTE:  
FOR CLARITY, ONLY HOLES PERTAINING TO MARKINGS ARE SHOWN.

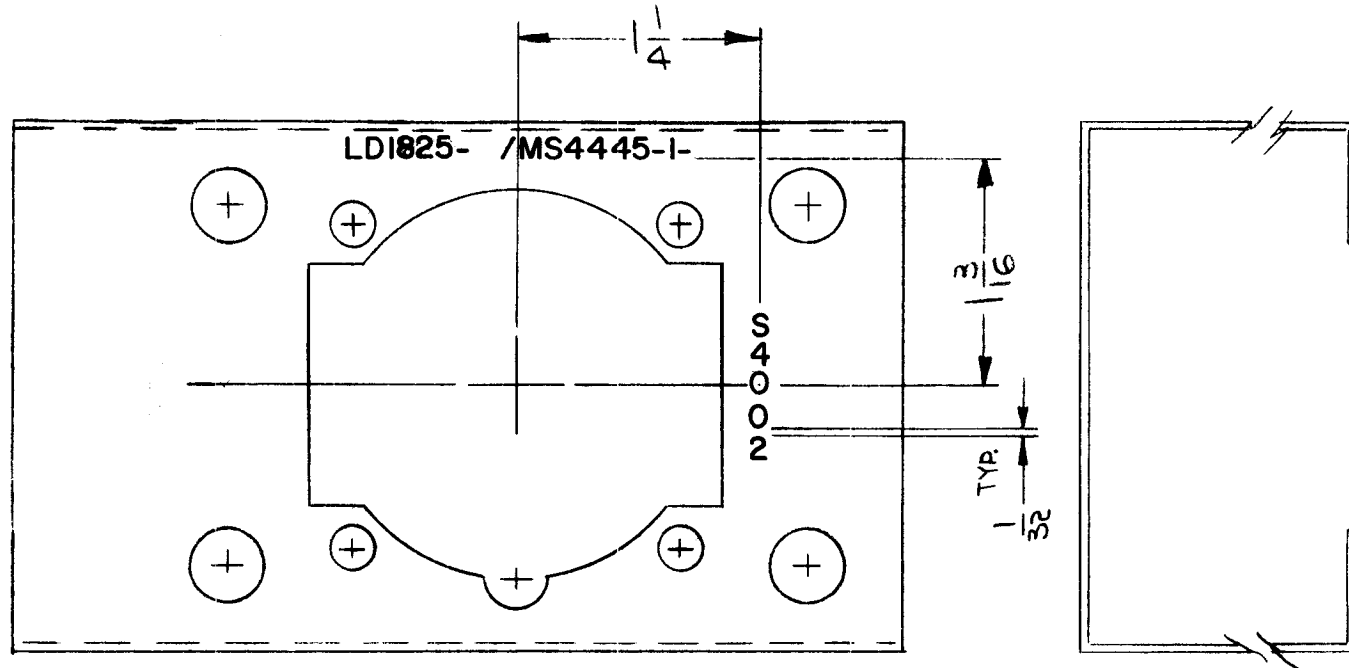
— FRONT VIEW — MARKING PROCESS: AS PER TMC SPECIFICATION S-727.  
LETTERING: 1/8 HIGH BLACK GOTHIC, LUSTERLESS  
LOCATED AS SHOWN.

(REF MS4418)

						REQ. ITEM	PART NO.	DESCRIPTION			SYMBOL			
ORIGINAL RELEASED FOR								THE TECHNICAL MATERIEL CORP. MAMARONECK, NEW YORK						
Ø		3-25-65	2	RU	<del>RU</del>	STOCK SIZE			MARKING, REAR PLATE					
X	EXP. RELEASE	3-23-65	1	CL	<del>RU</del>	MATERIAL								
SYM	DESCRIPTION	DATE	CH. NO.	DRAFTS	CHECKER	ENG. APP.	MATERIAL							
UNLESS OTHERWISE SPECIFIED DIMENSIONS ARE IN INCHES AND INCLUDE CHEMICALLY APPLIED OR PLATED FINISHES						SCALE Do Not Scale			C. LANZA					
DECIMALS .X ± .05 .XX ± .01 .XXX ± .005						TOLERANCES			FRACTIONS ± 1/64 ANGLES ± 0° 30'			CODE		
						TYPE & TEMPER			HEAT TREAT. SPEC.			DRAWN	CHECKED	FINAL APPROVAL
						FINISH & SPEC. NO.			ELEC. DES. APP.			MECH. DES. APP.	LD1817	Ø



REQ. PER UNIT	USED ON			LD1825	Ø
	MODEL	ASS'Y. NO.	DATE		
1	RSBA-1		3-17-65		



MARKING PROCESS: AS PER TMC SPECIFICATION S-727.

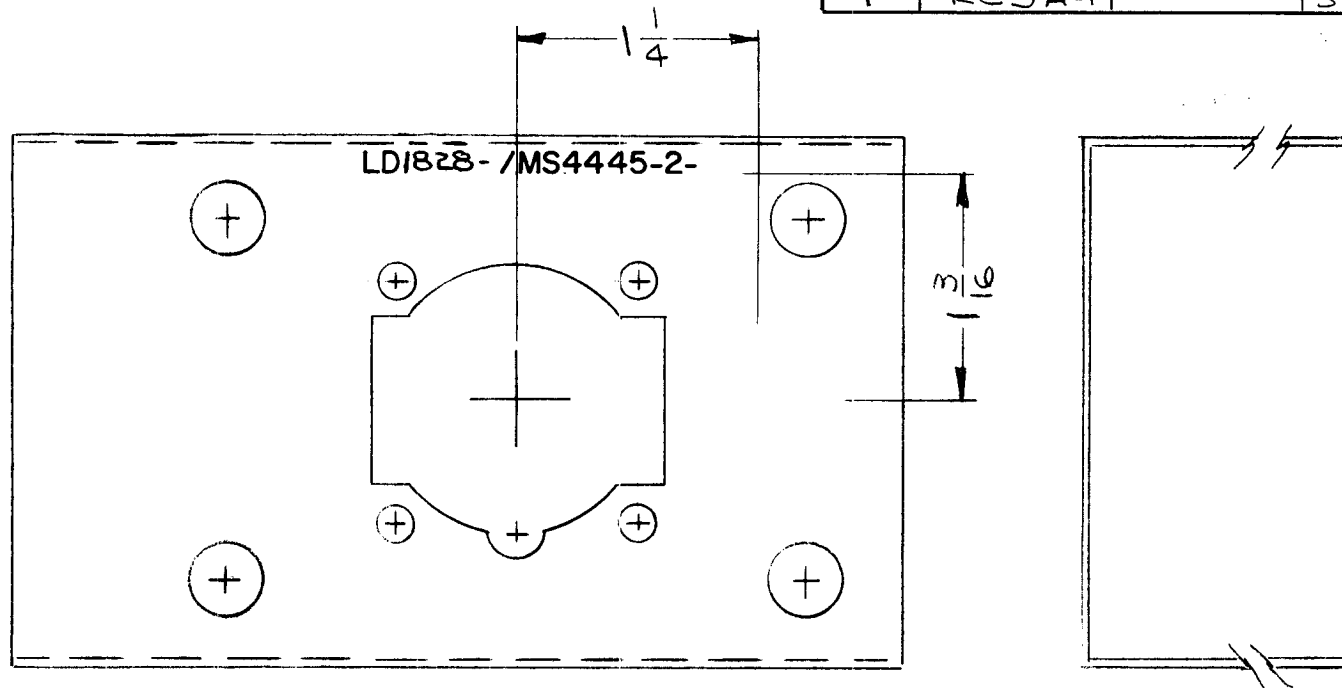
LETTERING: 1/8 HIGH BLACK GOTHIC, LOCATED AS SHOWN.

MARK TMC PART NO, AS SHOWN, WITH LATEST REV. LETTERS.

REF: MS4445-1

REQ. ITEM	PART NO.	F. EATON	DESCRIPTION	FORMALLY E31628.16	SYMBOL	
Ø	ORIGINAL RELEASE		11/1/65			
X2	SYM J4006 & CONNECTOR DETAIL DELETED	4-7-65	X2	G.L. J.M. W.J.		
X1	J4006 WAS J4007	3-31-65	X1			
SYM	DESCRIPTION	DATE	CH. NO.	DRAFTS	CHECKER	ENG. APP.
UNLESS OTHERWISE SPECIFIED DIMENSIONS ARE IN INCHES AND INCLUDE CHEMICALLY APPLIED OR PLATED FINISHES		SCALE				1:1
DECIMALS .X ± .05 .XX ± .01 .XXX ± .005	TOLERANCES	FRACTIONS ± 1/64 ANGLES ± 0° 30'	CODE A			
TYPE & TEMPER		HEAT TREAT. SPEC.		DRAWN		CHECKED
FINISH & SPEC. NO.		ELEC. DES. APP.		MECH. DES. APP.		
				LD1825		Ø

REQ. PER UNIT	USED ON			LD1828	Ø
	MODEL	ASS'Y. NO.	DATE		
1	RCSA-1		3-17-65		



MARKING PROCESS: AS PER TMC SPECIFICATION S-727.

LETTERING: 1/8 HIGH BLACK GOTHIC, LOCATED AS SHOWN.

MARK TMC P/N, WITH LATEST REV. LETTERS, AS SHOWN

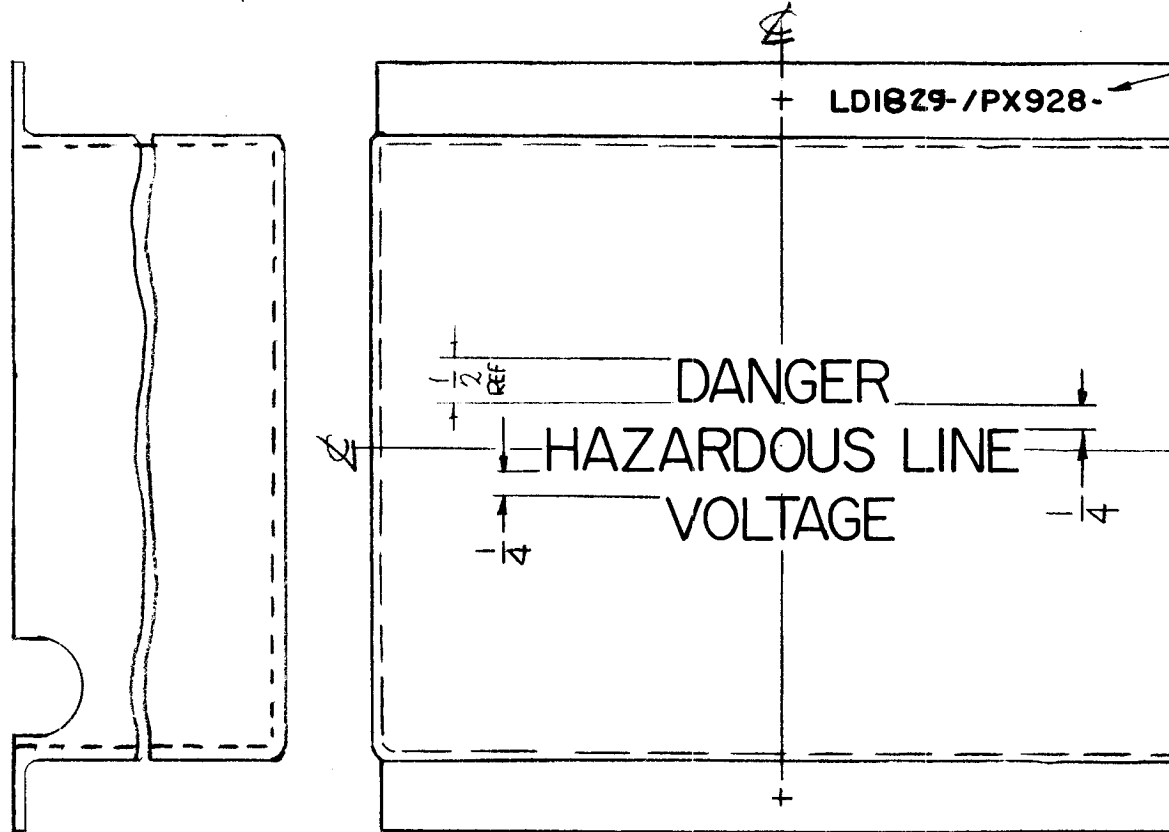
REF: MS4445-2

							REQ. ITEM	PART NO.	F. EATON	DESCRIPTION	FORMALLY E3162B-28	SYMBOL	
Ø	ORIGINAL RELEASE	7/26/69	Ø	Ø			A		THE TECHNICAL MATERIEL CORP. MAMARONECK. NEW YORK				
X1	CONNECTOR CUTOUT DELETED	4-7-65	X1	J.L.	J.M.	W.J.	A		MARKING, BKT, MTG, SW, SOLENOID				
SYM	DESCRIPTION	DATE	CH. NO.	DRAFTS	CHECKER	ENG. APP.	MATERIAL		MARKING PROCESS: PER TMC SPEC S727				
UNLESS OTHERWISE SPECIFIED DIMENSIONS ARE IN INCHES AND INCLUDE CHEMICALLY APPLIED OR PLATED FINISHES		SCALE 1:1					A		G. Swen		G. Swen 7/26/69		
DECIMALS .X ± .05 .XX ± .01 .XXX ± .005		TOLERANCES		FRACTIONS ± 1/64 ANGLES ± 0° 30'		CODE A	A		TYPE & TEMPER		HEAT TREAT. SPEC.		
						A		FINISH & SPEC. NO.		ELEC. DES. APP.		MECH. DES. APP.	
										LD1828		Ø	

MARKING PROCESS: AS PER TMC SPECIFICATION S-727.

REQ. PER UNIT 2	USED ON			LD1829	Ø
	MODEL GPT-200K	ASS'Y. NO.	DATE 3-17-65		

LETTERING: 1/2 HIGH RED GOTHIC, LOCATED AS SHOWN.



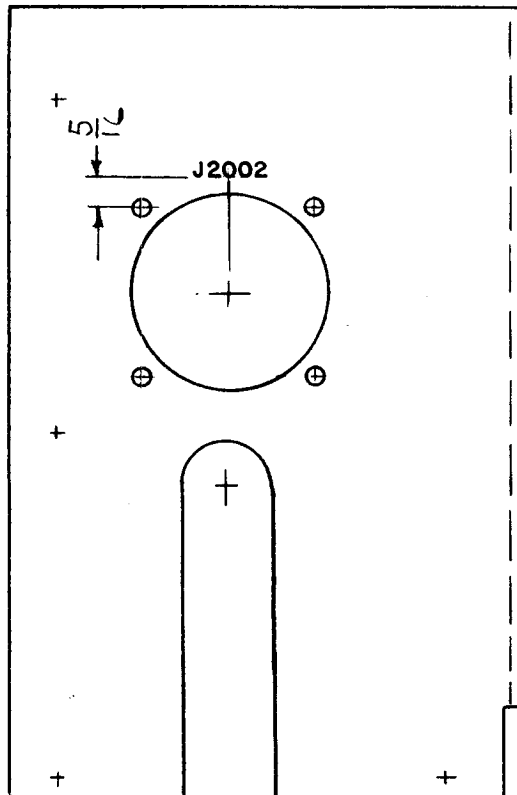
MARK TMC PART NO.  
1/8 HIGH GOTHIC  
W/LATEST REV  
LETTER. (RED)

REF: PX928

SYM	DESCRIPTION	DATE	CH. NO.	DRAFTS	CHECKER	ENG. APP.	REQ. ITEM	PART NO.	F. BUDETTI DESCRIPTION	SYMBOL			
Ø	ORIGINAL RELEASE FOR PRODUCTION	4/20/65	-A	SRG					THE TECHNICAL MATERIEL CORP. MAMARONECK. NEW YORK				
X2	SIDE VIEW ADDED FOR CLARIFICATION	4/2/65		CJL				STOCK SIZE					
X1	DWG N° WAS LD1647	3-19-65	1					MATERIAL		MARKING, COVER, RESISTOR & RELAY			
UNLESS OTHERWISE SPECIFIED DIMENSIONS ARE IN INCHES AND INCLUDE CHEMICALLY APPLIED OR PLATED FINISHES		SCALE	1:1						SRG	JCB	DB		
DECIMALS .X ± .05 .XX ± .01 .XXX ± .005		TOLERANCES		FRACTIONS ± 1/64 ANGLES ± 0° 30'		CODE A			TYPE & TEMPER	HEAT TREAT. SPEC.	DRAWN	CHECKED	FINAL APPROVAL
							FINISH & SPEC. NO.		ELEC. DES. APP.	MECH. DES. APP.	LD1829		Ø



REQ. PER UNIT	USED ON			LD1850	Q
	MODEL	ASS'Y. NO.	DATE		
1	AP-126		5-1-65		



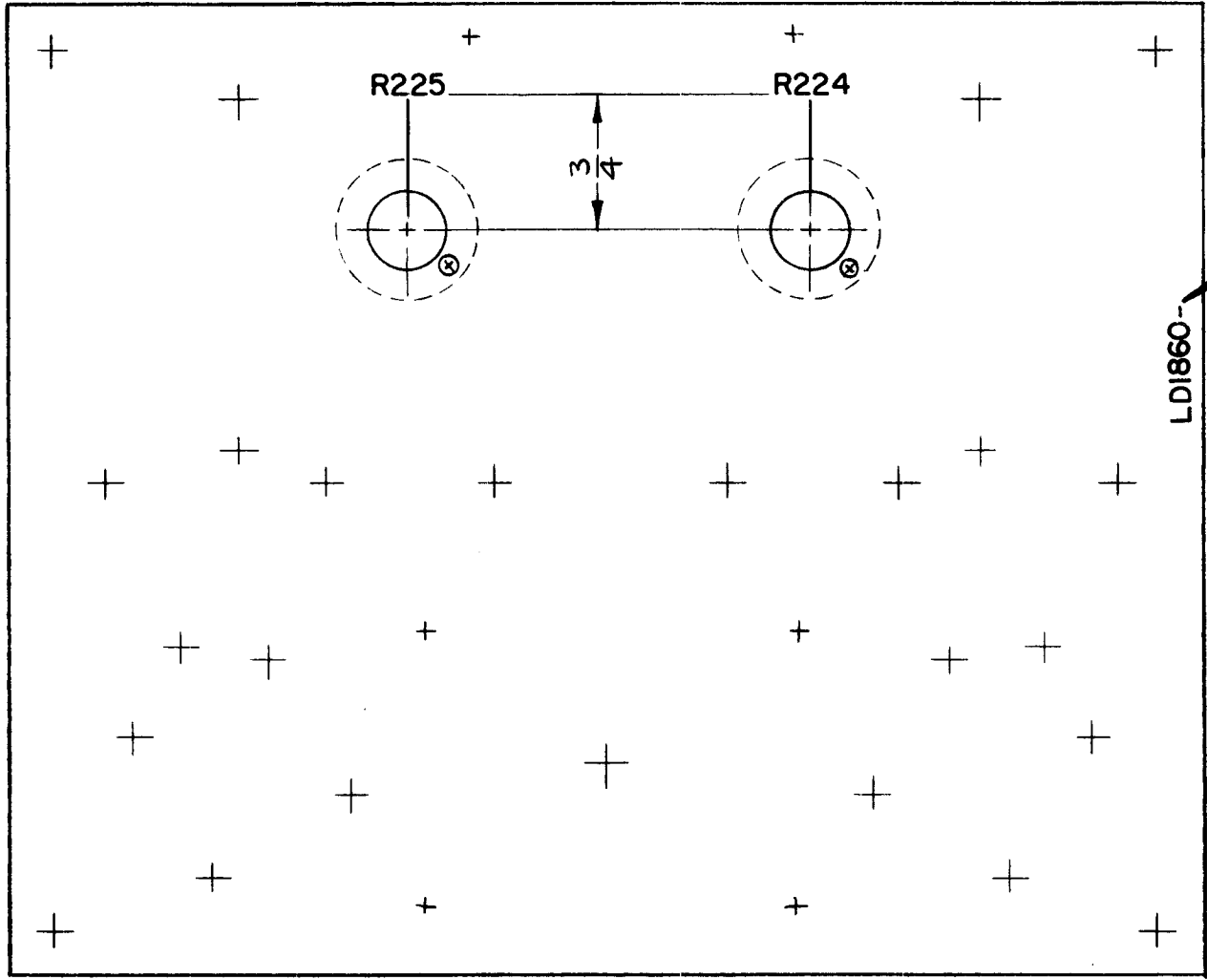
MARK TMC PART NO.  
LD1850-MS4390.  
1/8 HIGH GOTHIC  
W/LATEST REV. LETTER.  
(ON LIP.)

MARKING PROCESS: AS PER TMC SPECIFICATION S-727.  
LETTERING: 1/8 HIGH BLACK GOTHIC, LOCATED AS SHOWN.

REF. MS4390

REQ.	ITEM	PART NO.	F. BUDETTI			DESCRIPTION	SYMBOL	
Q	ORIGINAL RELEASE FOR PRODUCTION	8-25-66	Q	RME				
X1	PICTORIAL REVISED	7-29-65	X1	ARJ				
SYM	DESCRIPTION	DATE	CH. NO.	DRAFTS	CHECKER	ENG. APP.		
UNLESS OTHERWISE SPECIFIED DIMENSIONS ARE IN INCHES AND INCLUDE CHEMICALLY APPLIED OR PLATED FINISHES		SCALE	1/2:1					
DECIMALS .X ± .05 .XX ± .01 .XXX ± .005	TOLERANCES	FRACTIONS ± 1/64 ANGLES ± 0° 30'	CODE	A				
TYPE & TEMPER		HEAT TREAT. SPEC.	DRAWN		CHECKED	FINAL APPROVAL		
FINISH & SPEC. NO.		ELEC. DES. APP.	MECH. DES. APP.		LD1850 Q			

REQ. PER UNIT	USED ON			LD1860 $\emptyset$
	MODEL	ASS'Y. NO.	DATE	
1	RFTA-1		4.22.1965	



MARK TMC P/N, WITH LATEST REVISION LETTER

MARKING PROCESS:  
AS PER TMC SPEC. S-727

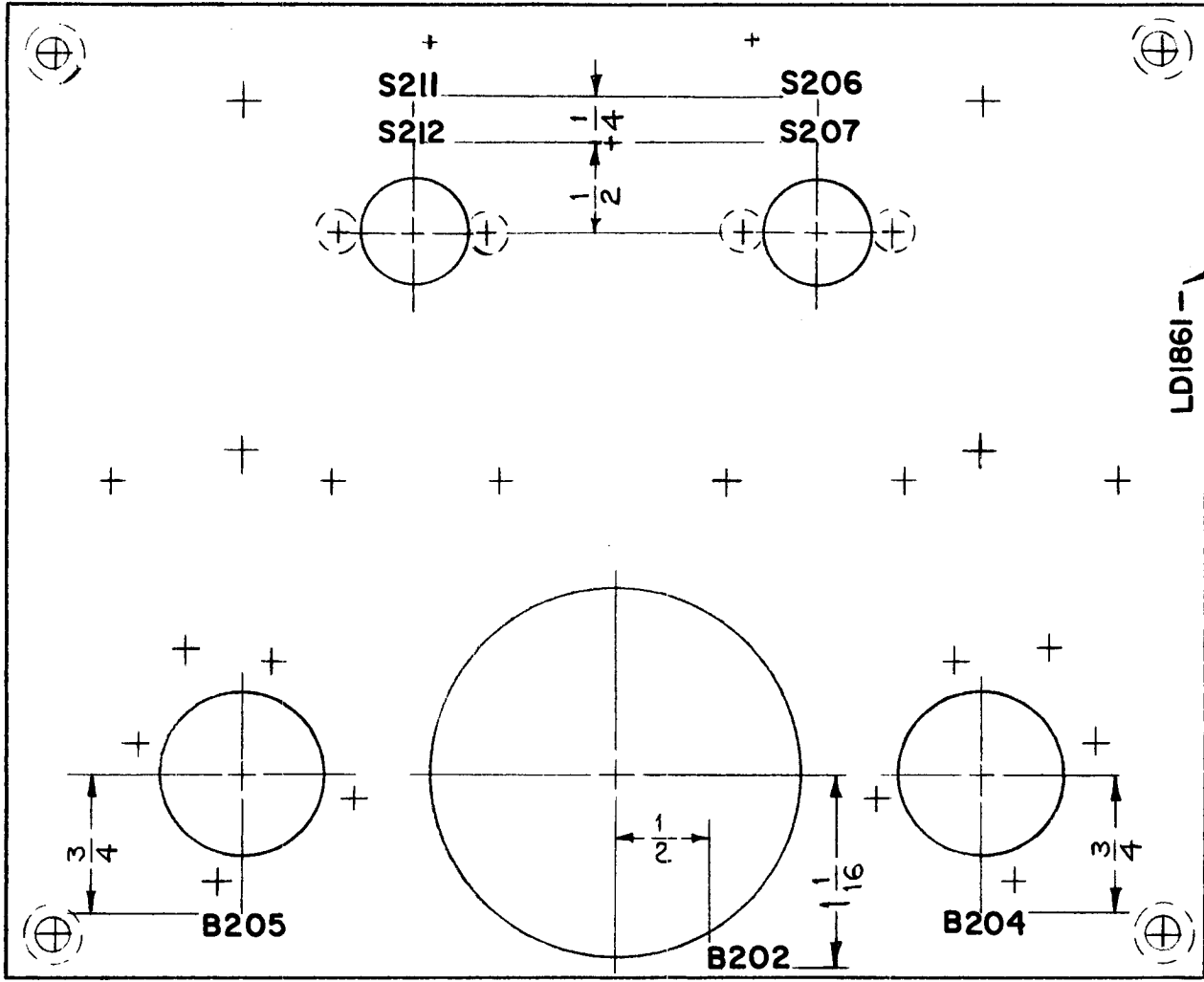
LETTERING:  
1/8 HIGH BLACK GOTHIC,  
LOCATED AS SHOWN.

REF: PM1193

							REQ. ITEM	PART NO.	FBUDETTI	DESCRIPTION	SYMBOL	
									THE TECHNICAL MATERIEL CORP. MAMARONECK, NEW YORK			
$\emptyset$	ORIGINAL RELEASE FOR PRODUCTION	5/20/66	$\emptyset$	CV					MARKING, PLATE, GEAR, FRONT			
X1	PIN HOLES RELOCATED	6-9-65	X1						MARKING PROCESS: TMC S-727			
SYM	DESCRIPTION	DATE	CH. NO.	DRAFTS	CHECKER	ENG. APP.						
UNLESS OTHERWISE SPECIFIED DIMENSIONS ARE IN INCHES AND INCLUDE CHEMICALLY APPLIED OR PLATED FINISHES		SCALE		1:1					MB	JCB	QCB	AMM
							TYPE & TEMPER	HEAT TREAT. SPEC.	DRAWN	CHECKED	FINAL APPROVAL	
DECIMALS .X $\pm$ .05 .XX $\pm$ .01 .XXX $\pm$ .005	TOLERANCES	FRACTIONS $\pm$ 1/64 ANGLES $\pm$ 0° 30'	CODE A						6/19/66		LD1860 $\emptyset$	
							FINISH & SPEC. NO.		ELEC. DES. APP.	MECH. DES. APP.		

5/20/66

REQ. PER UNIT	USED ON			LD1861	Ø
	MODEL	ASS'Y. NO.	DATE		
1	RFTA-1		4.21.65		



LD1861--

MARK TMC P/N, WITH LATEST REVISION LETTER

MARKING PROCESS:  
AS PER TMC SPEC. S-727  
LETTERING:  
1/8 HIGH BLACK GOTHIC,  
LOCATED AS SHOWN.

REF:PM1192

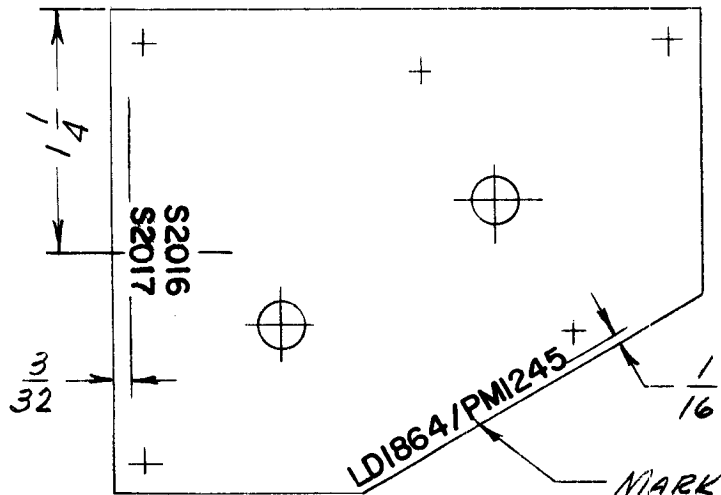
							REQ. ITEM	PART NO.	F. BUDETTI	DESCRIPTION	SYMBOL	
Ø	ORIGINAL RELEASE FOR PRODUCTION	5/19/65	CV				---	---	THE TECHNICAL MATERIEL CORP. MAMARONECK. NEW YORK			
X1	PICTORIAL REVISED	6-10-65	X1				---	---	MARKING, PLATE, GEAR, REAR			
SYM	DESCRIPTION	DATE	CH. NO.	DRAFTS	CHECKER	ENG. APP.	MATERIAL		MARKING PROCESS: TMC S-727			
UNLESS OTHERWISE SPECIFIED DIMENSIONS ARE IN INCHES AND INCLUDE CHEMICALLY APPLIED OR PLATED FINISHES		SCALE		1:1			---	---	ASB	JCB	ASB	ML
DECIMALS .X ± .05 .XX ± .01 .XXX ± .005		TOLERANCES		FRACTIONS ± 1/64 ANGLES ± 0° 30'		CODE A	TYPE & TEMPER		HEAT TREAT. SPEC.	DRAWN	CHECKED	FINAL APPROVAL
							---		---	QA 6/19/65	ASB	LD1861
							FINISH & SPEC. NO.		ELEC. DES. APP.	MECH. DES. APP.	Ø	







REQ. PER UNIT	USED ON			LD1864	A
	MODEL	ASS'Y. NO.	DATE		
1	LRCC-1	AX567	4-22-65		

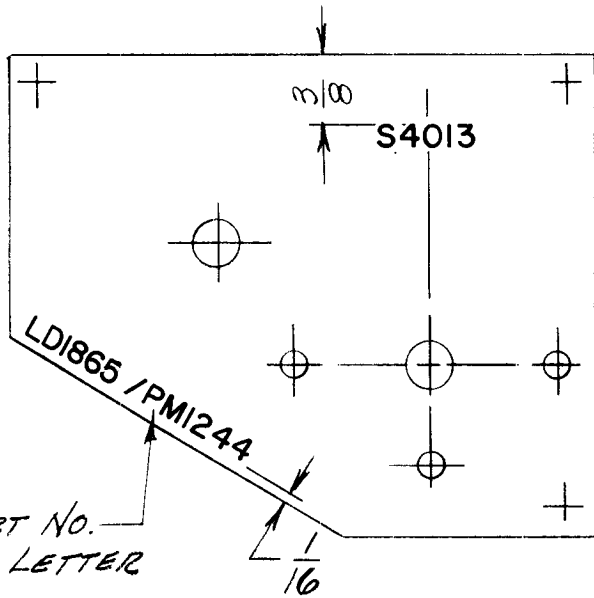


MARKING PROCESS: AS PER TMC SPECIFICATION S-727.  
 LETTERING: 1/8 HIGH BLACK GOTHIC, LOCATED AS SHOWN.

REF.: PM1245

REQ.	ITEM	PART NO.	DESCRIPTION				SYMBOL	
			THE TECHNICAL MATERIEL CORP. MAMARONECK, NEW YORK					
A			STOCK SIZE					
Ø			MARKING, PLATE, GEAR, FRONT					
			LRCC-1					
SYM	DESCRIPTION	DATE	CH. NO.	DRAFTS	CHECKER	ENG. APP.		
	UNLESS OTHERWISE SPECIFIED DIMENSIONS ARE IN INCHES AND INCLUDE CHEMICALLY APPLIED OR PLATED FINISHES	SCALE	1:1					
DECIMALS	TOLERANCES	FRACTIONS	CODE					
.X ± .05 .XX ± .01 .XXX ± .005		± 1/64 ANGLES ± 0° 30'						
				TYPE & TEMPER	HEAT TREAT. SPEC.	DRAWN	CHECKED	FINAL APPROVAL
						H. AUSTIN	JCB	J. E. Eaton
				FINISH & SPEC. NO.	ELEC. DES. APP.	MECH. DES. APP.	LD1864	A

REQ. PER UNIT	USED ON			LD1865	∅
	MODEL	ASS'Y. NO.	DATE		
1	LRCM-1	AX568	4.22.65		



MARK TMC PART NO.  
W/LATEST REV. LETTER

MARKING PROCESS: AS PER TMC SPECIFICATION S-727.  
LETTERING: 1/8 HIGH BLACK GOTHIC, LOCATED AS SHOWN.

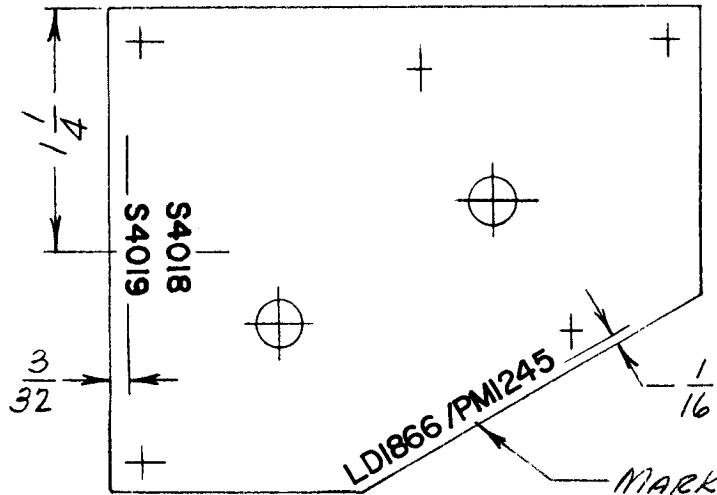
REF.: PM1244

REQ.	ITEM	PART NO.	DESCRIPTION				SYMBOL
			THE TECHNICAL MATERIEL CORP. MAMARONECK, NEW YORK				
			STOCK SIZE				
			MARKING, PLATE, GEAR, REAR				
			LRCM-1				
					H. Austin	JCB	E. Eaton
			TYPE & TEMPER	HEAT TREAT. SPEC.	DRAWN	CHECKED	FINAL APPROVAL
			FINISH & SPEC. NO.		ELEC. DES. APP.	MECH. DES. APP.	LD1865 ∅

UNLESS OTHERWISE SPECIFIED DIMENSIONS ARE IN INCHES AND INCLUDE CHEMICALLY APPLIED OR PLATED FINISHES	SCALE 1:1					
DECIMALS .X ± .05 .XX ± .01 .XXX ± .005	TOLERANCES	FRACTIONS ± 1/64 ANGLES ± 0° 30'	CODE			

REQ. PER UNIT	USED ON			LD1866	A
	MODEL	ASS'Y. NO.	DATE		
1	LRCM-1	AX 568	4.22.65		



MARKING PROCESS: AS PER TMC SPECIFICATION S-727.  
 LETTERING: 1/8 HIGH BLACK GOTHIC, LOCATED AS SHOWN.

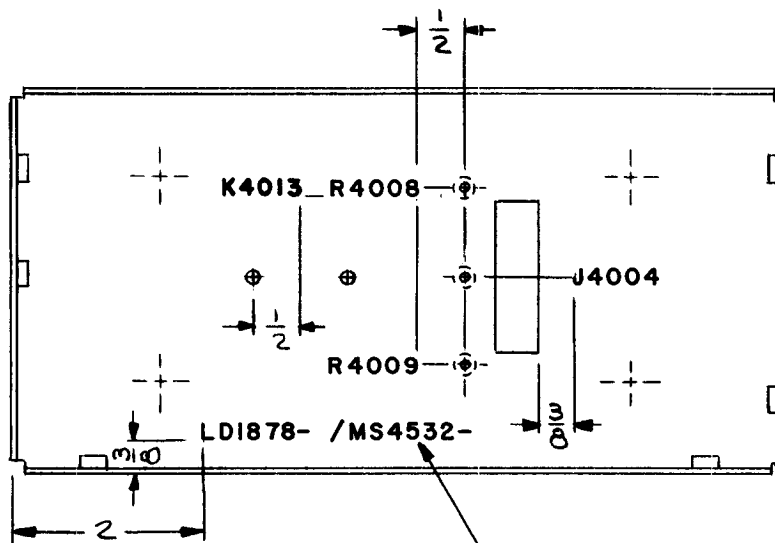
REF.: PMI245

REQ.	ITEM	PART NO.	DESCRIPTION				SYMBOL
			THE TECHNICAL MATERIEL CORP. MAMARONECK, NEW YORK				
A	"S4018" WAS "WS4001" "S4019" WAS "WS4002"	4.30.65 13994	HL	JCE			
Ø	ORIGINAL RELEASE FOR PRODUCTION	4.22.65	HLA				
SYM	DESCRIPTION	DATE	CH. NO.	DRAFTS	CHECKER	ENG. APP.	
UNLESS OTHERWISE SPECIFIED DIMENSIONS ARE IN INCHES AND INCLUDE CHEMICALLY APPLIED OR PLATED FINISHES		SCALE 1:1					
DECIMALS .X ± .05 .XX ± .01 .XXX ± .005		FRACTIONS ± 1/64 ANGLES ± 0° 30'		TOLERANCES			
TYPE & TEMPER		HEAT TREAT. SPEC.		DRAWN		CHECKED	
FINISH & SPEC. NO.		ELEC. DES. APP.		MECH. DES. APP.			
				H. AUSTIN		JCE	
				AUSTIN		JCE	
						LD1866	
						A	



REQ. PER UNIT	USED ON		
	MODEL	ASS'Y. NO.	DATE
1	LRCB-1		4-29-65
1	LRCD-1		4-29-65

LD1878 A



MARK TMC PT. NO. W/LATEST REV. LETTER.

- UNLESS OTHERWISE SPECIFIED -

1-MARKING PROCESS: AS PER TMC SPECIFICATION S-727.

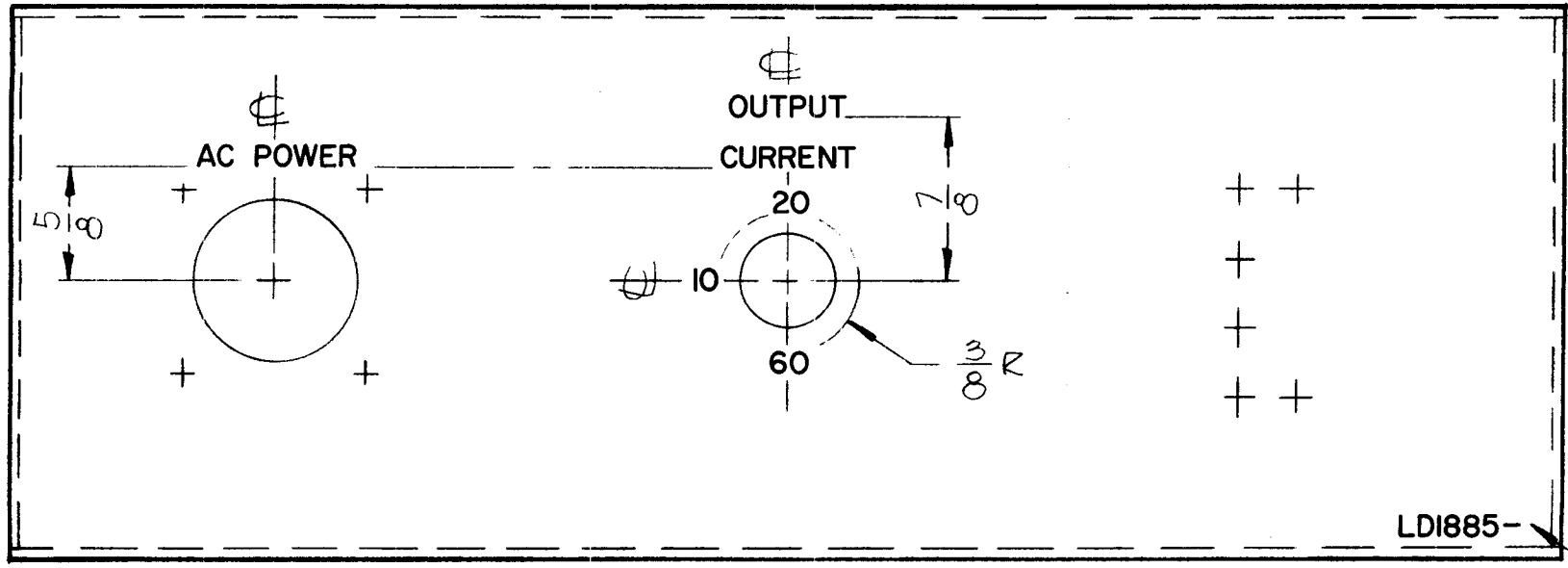
2-LETTERING: 1/8 HIGH BLACK GOTHIC, LOCATED AS SHOWN.

REF: MS4532

							REQ. ITEM	PART NO.	F. E. EATON	DESCRIPTION	SYMBOL
							— # —		THE TECHNICAL MATERIEL CORP. MAMARONECK, NEW YORK		
							STOCK SIZE		MARKING-MTG BRACKET-SERVO		
							— # —				
							MATERIAL				
SYM	DESCRIPTION	DATE	CH. NO.	DRAFTS	CHECKER	ENG. APP.			J. LESHINSKI	<i>JCP</i>	<i>F. E. Eaton 4/30/65</i>
UNLESS OTHERWISE SPECIFIED DIMENSIONS ARE IN INCHES AND INCLUDE CHEMICALLY APPLIED OR PLATED FINISHES		SCALE	1/2						DRAWN	CHECKED	FINAL APPROVAL
DECIMALS .X ± .05 .XX ± .01 .XXX ± .005	TOLERANCES	FRACTIONS ± 1/64 ANGLES ± 0° 30'	CODE							<i>JCP</i>	LD1878 A
							FINISH & SPEC. NO.		ELEC. DES. APP.	MECH. DES. APP.	



REQ. PER UNIT	USED ON			LD1885	Ø
	MODEL	ASS'Y. NO.	DATE		
	PSPA		7.13.66		



LD1885-

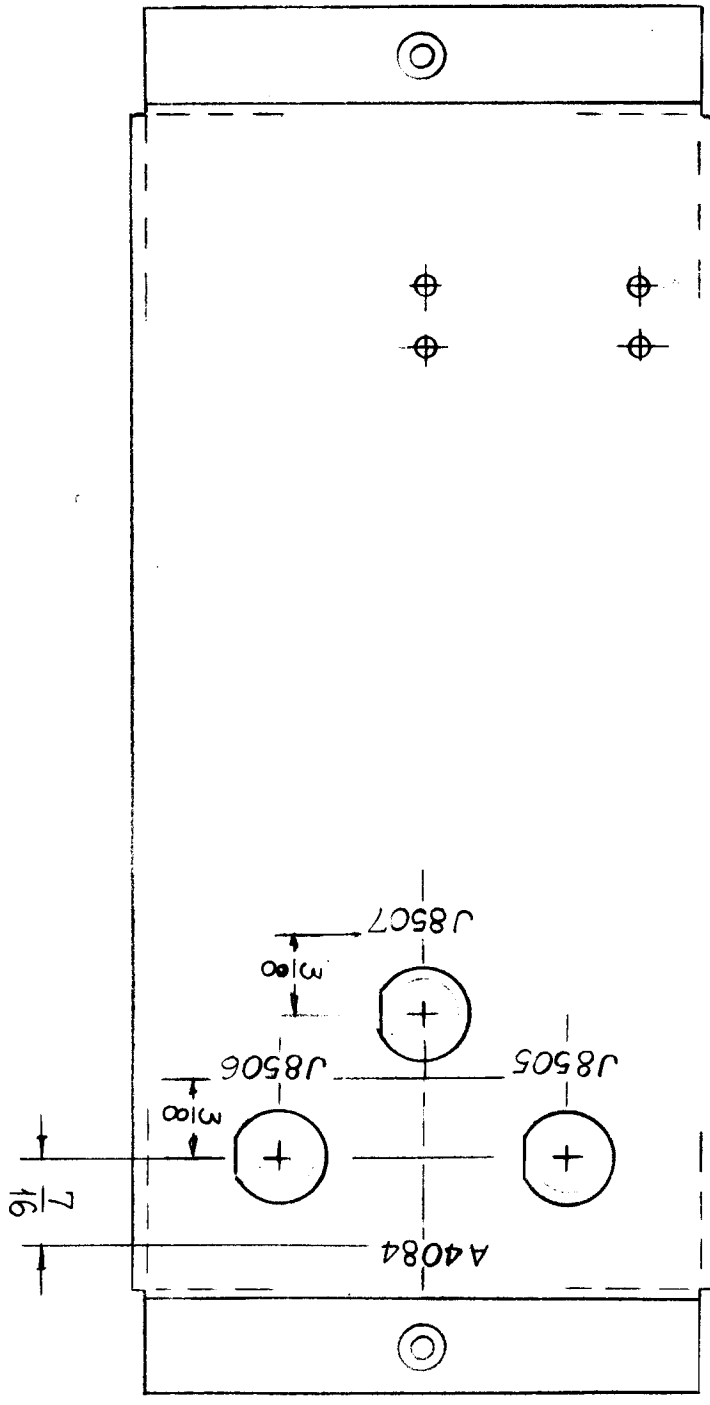
MARK TMC PT/No  
 1/8 HIGH GOTHIC W/LATEST  
 REVISION LETTER

REF: MS455I

REQ.	ITEM	PART NO.	DESCRIPTION				SYMBOL
			<b>THE TECHNICAL MATERIEL CORP.</b>				
			MAMARONECK. NEW YORK				
			MARKING, COVER WRAPAROUND				
			MATERIAL				
			TYPE & TEMPER HEAT TREAT. SPEC.				
			DRAWN CHECKED				
			FINAL APPROVAL				
			FINISH & SPEC. NO.				
			ELEC. DES. APP. MECH. DES. APP.				
			LD1885				Ø



USED ON		LD1887	
MODEL	ASS'Y. NO.	DATE	
A4084		4-26-65	



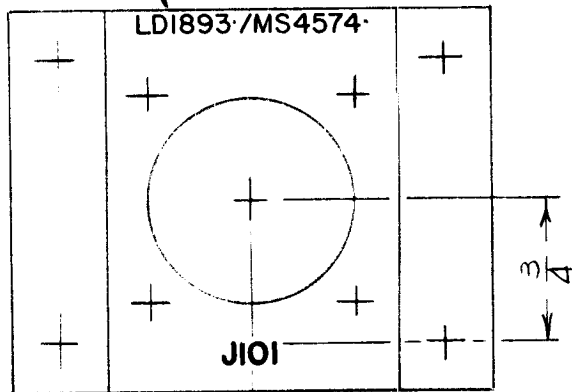
MARKING PROCESS AS PER TMC SPECIFICATION 5727.  
 ALL LETTERING 1/8 HIGH BLACK GOTHIC.

REF: MS 4195

REQ. ITEM	PART NO.	STURMER	DESCRIPTION	SYMBOL
			THE TECHNICAL MATERIEL CORP. MAMARONECK. NEW YORK	
	STOCK SIZE		MARKING, RELAY CHASSIS	
	MATERIAL			
TYPE & TEMPER	HEAT TREAT. SPEC.	M. STURMER 4-26-65	CHECKED	FINAL APPROVAL
			11/2/65	LD1887
FINISH & SPEC. NO.				

REQ. PER UNIT	USED ON			LD1893	Ø
	MODEL	ASS'Y. NO.	DATE		
1	HSS-B		5-5-65		

MARK TMC PT. NO. W/LATEST REV. LETTER



MARKING PROCESS: AS PER TMC SPECIFICATION S-727.

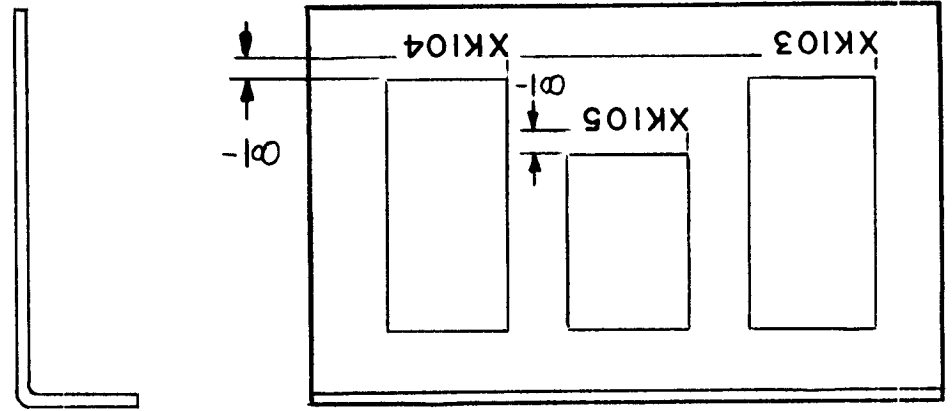
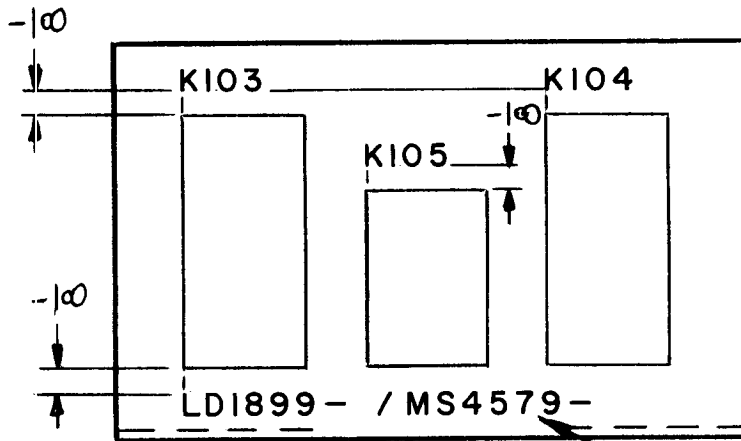
LETTERING: 1/8 HIGH BLACK GOTHIC, LOCATED AS SHOWN.

REF.: MS4574

							REQ. ITEM	PART NO.	POSE	DESCRIPTION	SYMBOL	
										THE TECHNICAL MATERIEL CORP. MAMARONECK. NEW YORK		
								STOCK SIZE		MARKING, BRACKET, CONN. MTG.		
Ø	ORIGINAL RELEASE FOR PRODUCTION	5/6/65	-A	HLA								
SYM	DESCRIPTION	DATE	CH. NO.	DRAFTS	CHECKER	ENG. APP.		MATERIAL				
UNLESS OTHERWISE SPECIFIED DIMENSIONS ARE IN INCHES AND INCLUDE CHEMICALLY APPLIED OR PLATED FINISHES		SCALE		1:1					H AUSTIN	JCB	MMK 5/5/65	
									DRAWN	CHECKED	FINAL APPROVAL	
DECIMALS .X ± .05 .XX ± .01 .XXX ± .005		FRACTIONS ± 1/64 ANGLES ± 0° 30'		TOLERANCES			CODE				LD1893	Ø
								FINISH & SPEC. NO.	ELEC. DES. APP.	MECH. DES. APP.		



REQ. PER UNIT	USED ON			LD1899 $\emptyset$
	MODEL	ASS'Y. NO.	DATE	
1	RGCB-1		5/13/65	



- FRONT VIEW -

- REAR VIEW -

MARK TMC PT. NO. W/LATEST REVISION LETTER

- UNLESS OTHERWISE SPECIFIED -

1-MARKING PROCESS: AS PER TMC SPECIFICATION S-727.

2-LETTERING: 1/8 HIGH BLACK GOTHIC, LOCATED AS SHOWN.

REF. : MS 4579

							REQ. ITEM	PART NO.	EATON	DESCRIPTION	SYMBOL	
							STOCK SIZE		THE TECHNICAL MATERIEL CORP. MAMARONECK, NEW YORK			
							MATERIAL		MARKING - BRACKET, MTG, RELAY			
$\emptyset$	ORIGINAL RELEASE FOR PRODUCTION	5/18/65	AA	JL	J.M.							
SYM	DESCRIPTION	DATE	CH. NO.	DRAFTS	CHECKER	ENG. APP.	MATERIAL		LESHINSKI	<i>JCB</i>	<i>J E Eaton</i> 5/18/65	
UNLESS OTHERWISE SPECIFIED DIMENSIONS ARE IN INCHES AND INCLUDE CHEMICALLY APPLIED OR PLATED FINISHES		SCALE		1/1			TYPE & TEMPER		HEAT TREAT. SPEC.	DRAWN	CHECKED	FINAL APPR VAL
DECIMALS .X $\pm$ .05 .XX $\pm$ .01 .XXX $\pm$ .005		FRACTIONS $\pm$ 1/64 ANGLES $\pm$ 0° 30'		TOLERANCES			FINISH & SPEC. NO.		ELEC. DES. APP.		MECH. DES. APP.	LD1899 $\emptyset$
									W. JORDAN 5/14/65			