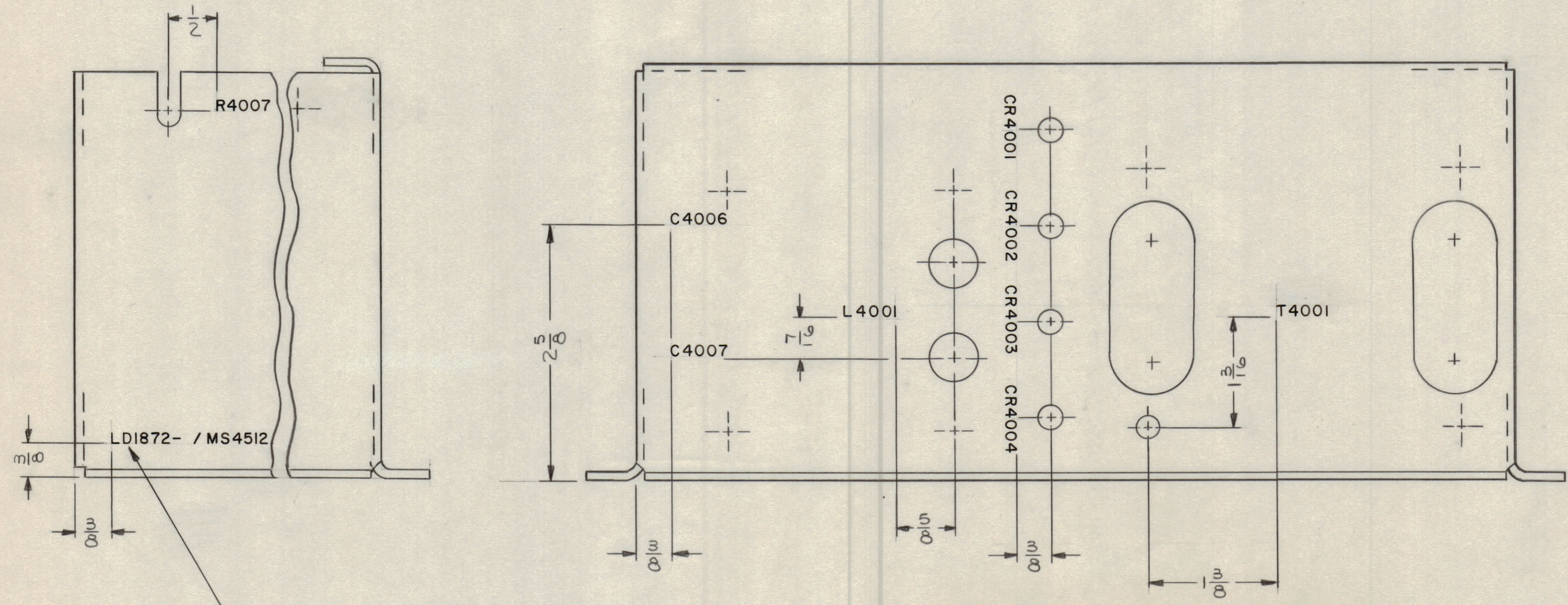


REVISIONS					
ZONE	SYM	DESCRIPTION	DATE	E.M.N. NO.	APPD
	Ø	ORIG. RELEASE FOR PRODUCTION	4/30/65		JL



MARK TMC PT. NO. W/LATEST REV. LETTER

- UNLESS OTHERWISE SPECIFIED -
- 1- MARKING PROCESS: AS PER TMC SPECIFICATION S-727.
  - 2- LETTERING: 1/8 HIGH BLACK GOTHIC, LOCATED AS SHOWN.

REF. : MS4512

1	LRCB-1	
1	LRCB-1	
Q'TY./UNIT	MODEL USED ON	ASS'Y. NO.
SCALE	CODE	
1/1		

REQ'D.	ITEM	PART NUMBER	DESCRIPTION	SYMBOL
F.E. EATON LIST OF MATERIAL				
MATERIAL		THE TECHNICAL MATERIEL CORP. MAMARONECK, NEW YORK		
FINISH		TITLE MARKING - BKT, TRANSFORMER MTG		
UNLESS OTHERWISE SPECIFIED DIMENSIONS ARE IN INCHES AND INCLUDE CHEMICALLY APPLIED OR PLATED FINISHES				
DRAWN	J. LESHINSKI	DATE	4/27/65	FINAL APPROVAL
CHECKED	<i>[Signature]</i>	DATE	4/29/65	<i>[Signature]</i>
ELECT. DES.		DATE		
MECH. DES.	<i>[Signature]</i>	DATE	4/30/65	
LD1872.Ø				REV. LTR.

THE CONTENTS OF THIS DRAWING ARE THE EXCLUSIVE PROPERTY OF THE TECHNICAL MATERIEL CORP. ITS UNAUTHORIZED USE OR REPRODUCTION IN WHOLE OR IN PART IS STRICTLY FORBIDDEN.

NOTES

LD1872.Ø