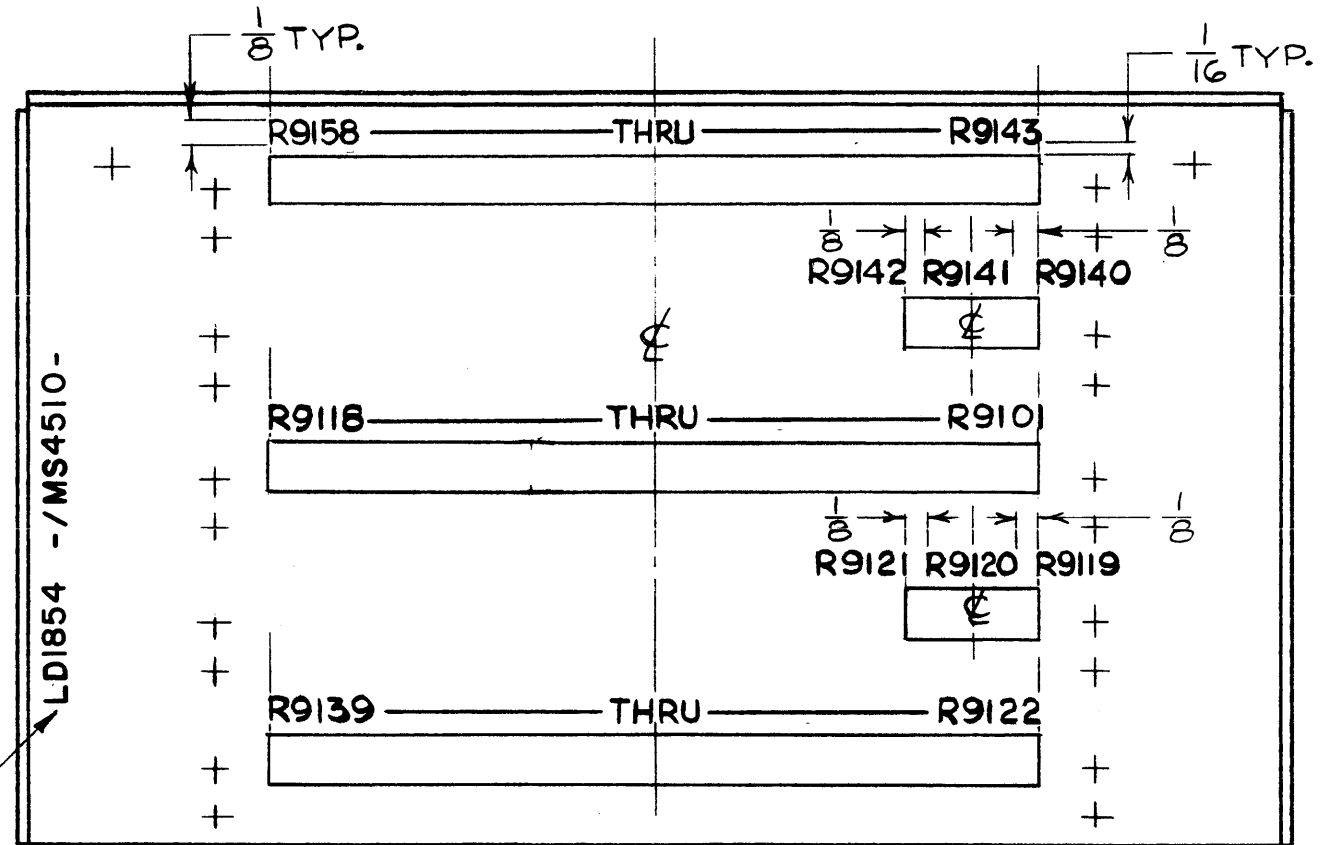
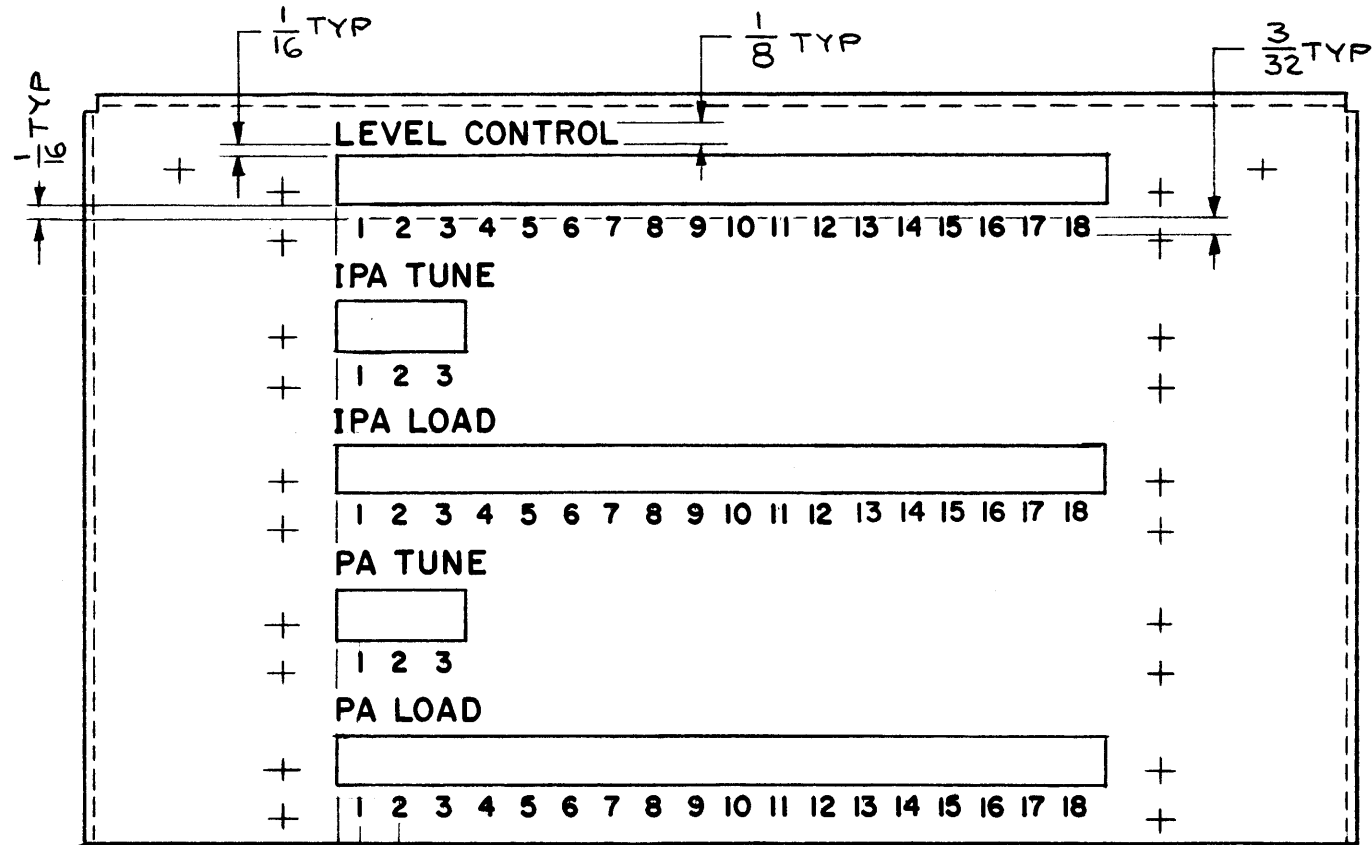


LD1854

REVISIONS					
SYM	DESCRIPTION	DATE	E.M.N. NO.	DRAFT	CHKD APPD
X1	LETTERING WAS BLACK	4-22-64	X1	SRG	CH
X2	ADDED RESISTOR SYMBOLS	6-8-65	X2	NLA	
Ø	ORIGINAL RELEASE FOR PRODUCTION	5-8-67	Ø	RG	



MARK TMC P/N 1/8 HIGH BLACK GOTHIC WITH LATEST REVISION LETTERS

MARKING PROCESS: AS PER TMC SPECS. S727
 LETTERING: 3/32 & 1/8 HIGH WHITE GOTHIC, LOCATED AS SHOWN.

1	TSTE 10K	
Q'TY./UNIT	MODEL USED ON	ASS'Y. NO.
SCALE 1:1	CODE A	

THE CONTENTS OF THIS DRAWING ARE THE EXCLUSIVE PROPERTY OF THE TECHNICAL MATERIEL CORP. ITS UNAUTHORIZED USE OR REPRODUCTION IN WHOLE OR IN PART IS STRICTLY FORBIDDEN.

REF: MS4510

REQ'D.	ITEM	PART NUMBER	DESCRIPTION	SYMBOL
F. BUDETTI LIST OF MATERIAL				
MATERIAL		THE TECHNICAL MATERIEL CORP. MAMARONECK, NEW YORK		
FINISH		TITLE MARKING, CHASSIS, MTG., RESISTOR MARKING PROCESS: TMC S727		
UNLESS OTHERWISE SPECIFIED DIMENSIONS ARE IN INCHES AND INCLUDE CHEMICALLY APPLIED OR PLATED FINISHES		DRAWN JB	DATE 4.5.65	FINAL APPROVAL [Signature]
DECIMALS .X ± .05 .XX ± .01 .XXX ± .005		CHECKED [Signature]	DATE	DATE 5/5/67
FRACTIONS ± 1/64 ANGLES ± 0° 30'		ELECT. DES. [Signature]	DATE	DATE
TOLERANCES		MECH. DES. [Signature]	DATE	DATE
SHEET LD1854				REV. LTR. Ø

NOTES