

7

6

5

4

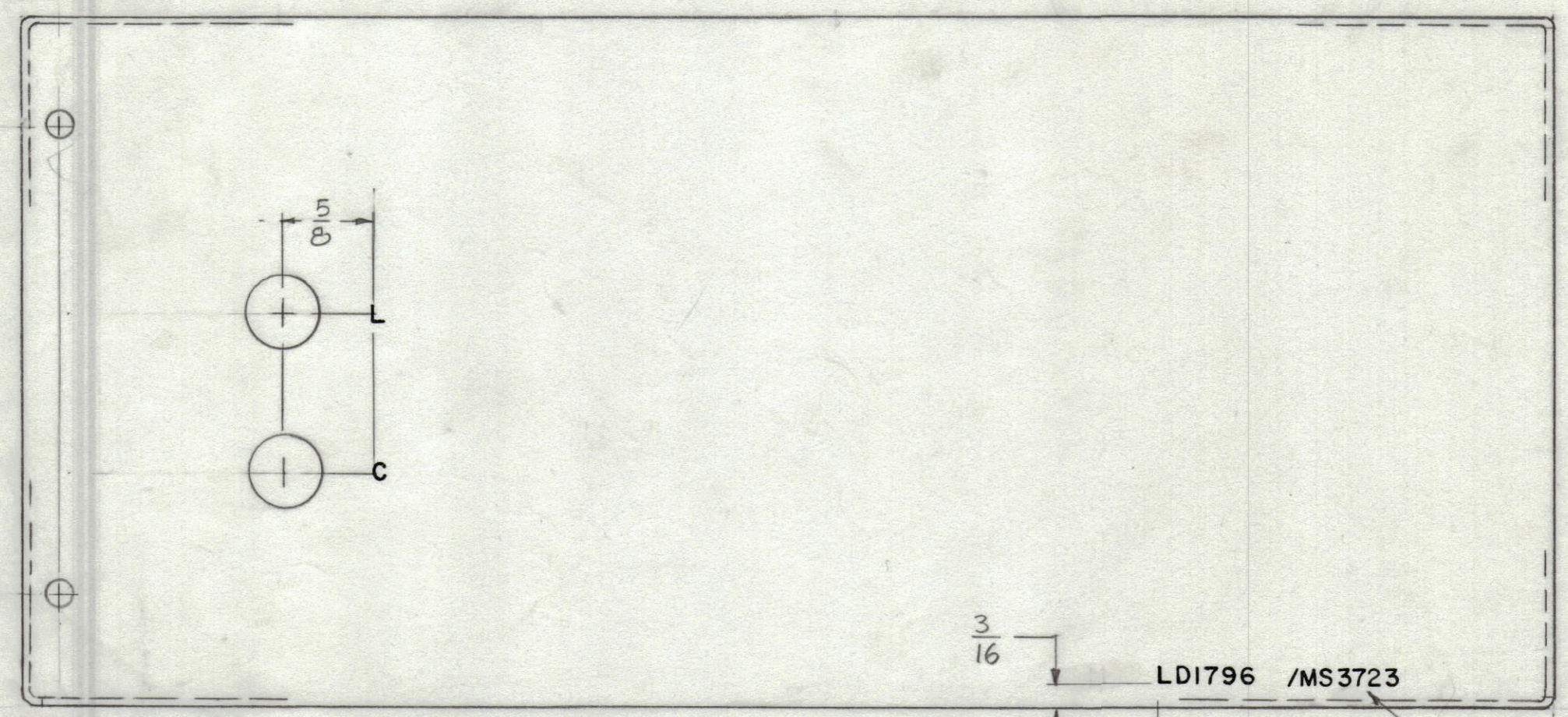
3

2

1

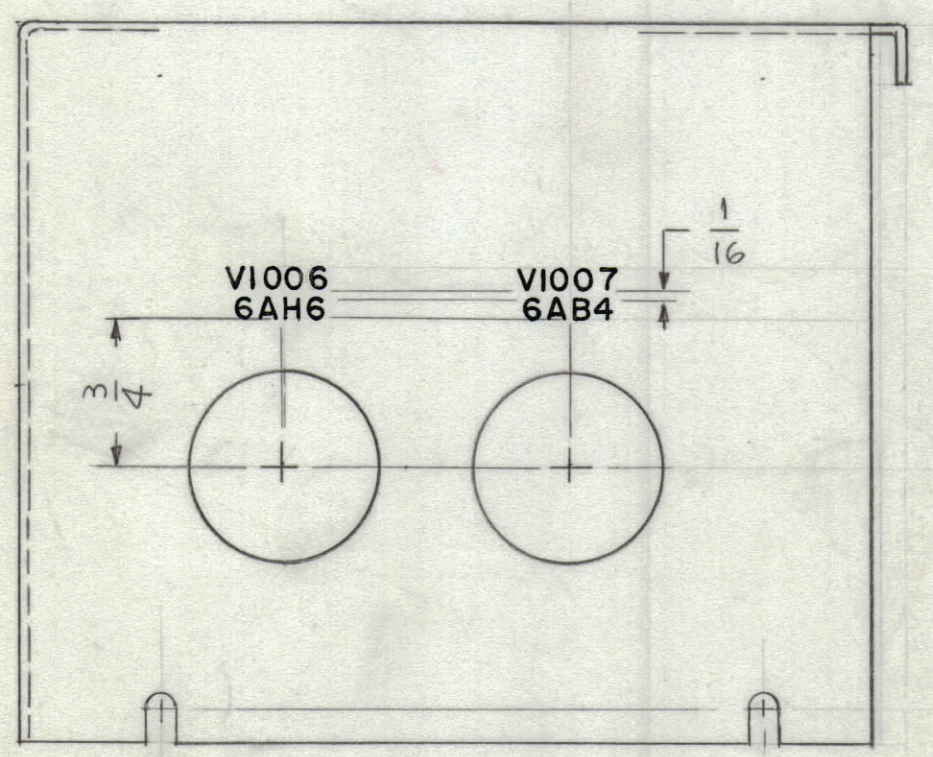
REVISIONS							
ZONE	SYM	DESCRIPTION	DATE	E.M.N. NO.	DRAFT	CHKD	APPD
	Ø	ORIGINAL RELEASE FOR PRODUCTION	5.6.65	Ø	Ø		

HOLES	DESCRIPTION	REQ.
A	3/16 DIA	2
B	1/2 DIA	2
C	1/8 DIA	2



MARK TMC P/No. WITH LATEST REV. LETTER.

LD1796 Ø



MARKING PROCESS: AS PER TMC SPECIFICATION S-727.  
 LETTERING: 1/8 HIGH BLACK GOTHIC, LOCATED AS SHOWN.

REF: MS 3723

REQ'D.	ITEM	PART NUMBER	DESCRIPTION	SYMBOL
J. ANGER LIST OF MATERIAL				
MATERIAL		THE TECHNICAL MATERIEL CORP. MAMARONECK, NEW YORK		
FINISH		TITLE MARKING, COVER, OUTSIDE TOP, OVEN. MARKING PROCESS: AS PER TMC SPEC. 5727		
UNLESS OTHERWISE SPECIFIED DIMENSIONS ARE IN INCHES AND INCLUDE CHEMICALLY APPLIED OR PLATED FINISHES		DRAWN G.D.L.	DATE 3-8-65	FINAL APPROVAL <i>W. May</i>
DECIMALS .X ± .05 .XX ± .01 .XXX ± .005		TOLERANCES	FRACTIONS ± 1/64 ANGLES ± 0° 30'	DATE 5/6/65
THE CONTENTS OF THIS DRAWING ARE THE EXCLUSIVE PROPERTY OF THE TECHNICAL MATERIEL CORP. ITS UNAUTHORIZED USE OR REPRODUCTION IN WHOLE OR IN PART IS STRICTLY FORBIDDEN.		ELECT. DES. <i>Anger</i>		DATE 5/6/65
NOTES		MECH. DES.		REV. LTR.
1		HFR-2/HFFR-2		ASS'Y. NO.
Q'TY./UNIT		MODEL USED ON		SCALE
1		A		1:1
SHEET		LD1796		Ø