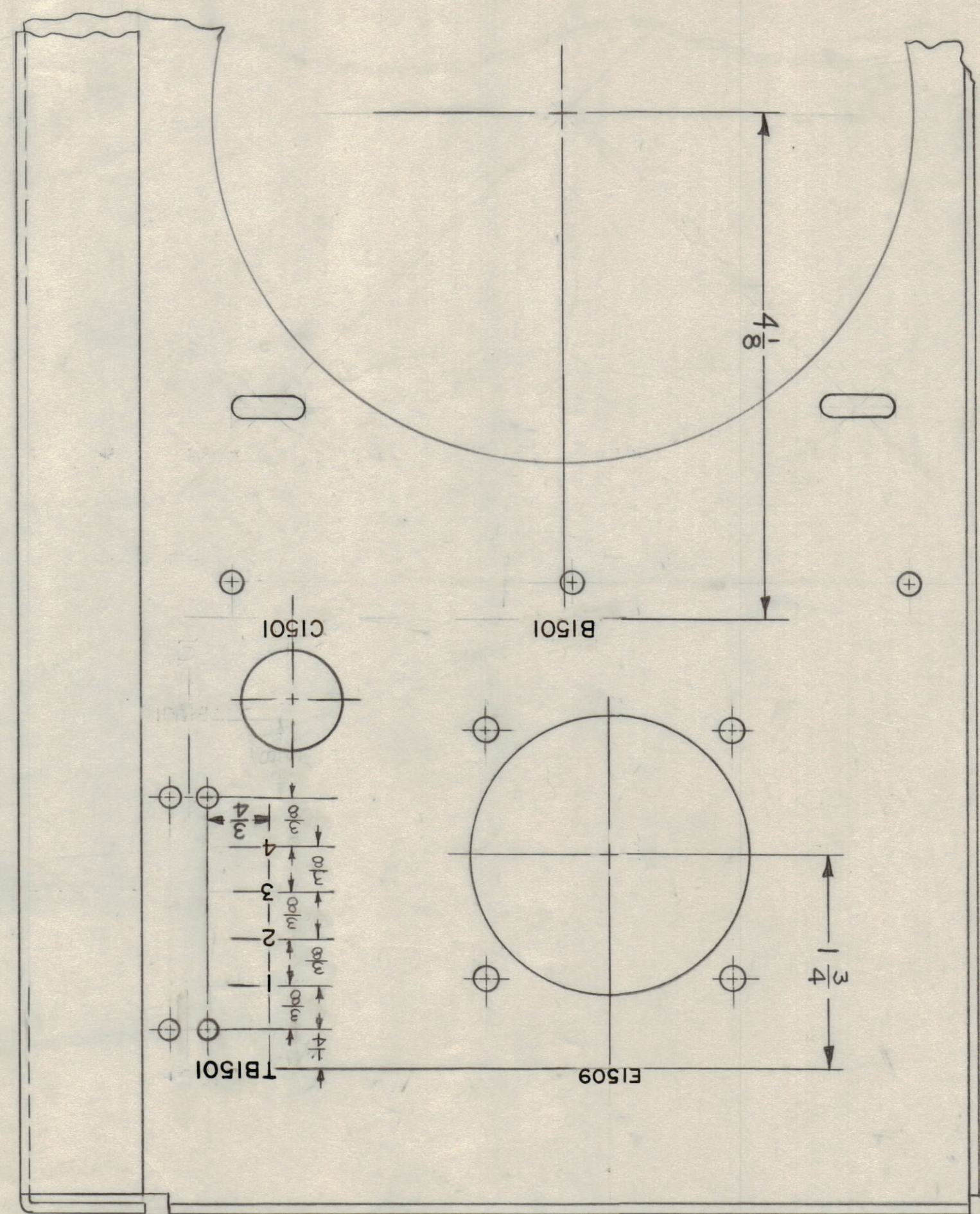
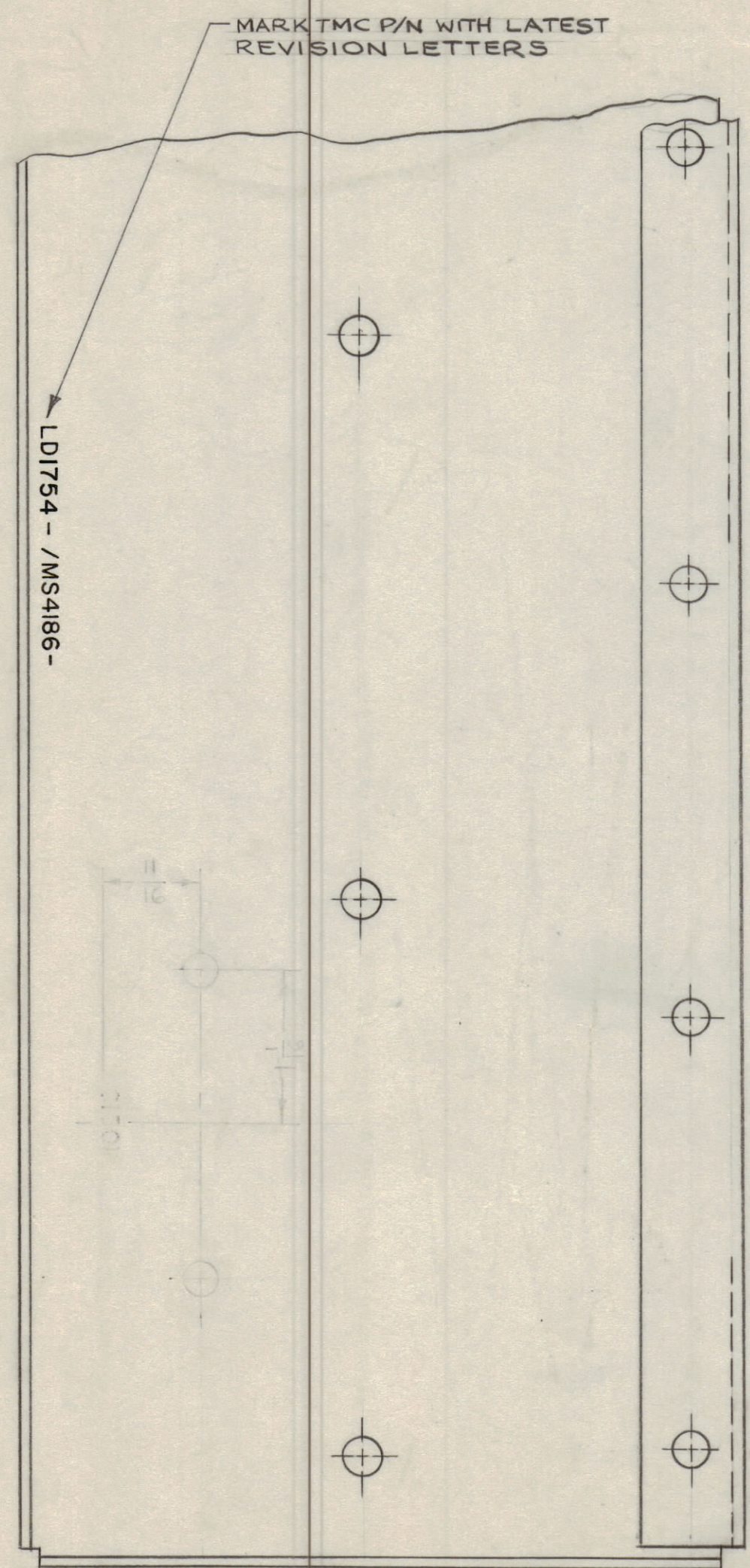


REVISIONS							
ZONE	SYM	DESCRIPTION	DATE	E.M.N. NO.	DRAFT	CHKD	APPD
	X	EXPERIMENTAL RELEASE	1.27.65	X			
	Ø	ORIGINAL RELEASE FOR PRODUCTION	2.26.65				
	A	TB1501, C1501 RELOCATED ON TB1501 1,2,3,4 ADDED	6-15-65	14158	D.V.V.		



NOTES:
 1. MARKING PROCESS: TMC SPEC. S727
 2. LETTERING: 1/8 HIGH BLACK GOTHIC, LOCATED AS SHOWN.

REF: MS4186

REQ'D.	ITEM	PART NUMBER	DESCRIPTION	SYMBOL
LIST OF MATERIAL				
MATERIAL		THE TECHNICAL MATERIEL CORP. MAMARONECK, NEW YORK		
FINISH		TITLE MARKING, PLATE, SIDE, LEFT MARKING PROCESS: TMC-S727		
UNLESS OTHERWISE SPECIFIED DIMENSIONS ARE IN INCHES AND INCLUDE CHEMICALLY APPLIED OR PLATED FINISHES		DRAWN <i>bra</i>	DATE 1.27.65	FINAL APPROVAL <i>Roe</i>
SCALE 1:1		CHECKED <i>gcb</i>	DATE	DATE
CODE A		ELECT. DES. <i>gcb</i>	DATE	DATE
MECH. DES. <i>gcb</i>		DATE	DATE	DATE

1	HVRB-1	
1	HVRC-1	
Q'TY./UNIT	MODEL USED ON	ASS'Y. NO.
SCALE 1:1	CODE A	

NOTES

THE CONTENTS OF THIS DRAWING ARE THE EXCLUSIVE PROPERTY OF THE TECHNICAL MATERIEL CORP. ITS UNAUTHORIZED USE OR REPRODUCTION IN WHOLE OR IN PART IS STRICTLY FORBIDDEN.

DECIMALS
.X ± .05
.XX ± .01
.XXX ± .005

FRACTIONS
± 1/64
ANGLES
± 0° 30'

LD1754 A
SHEET
REV. LTR.