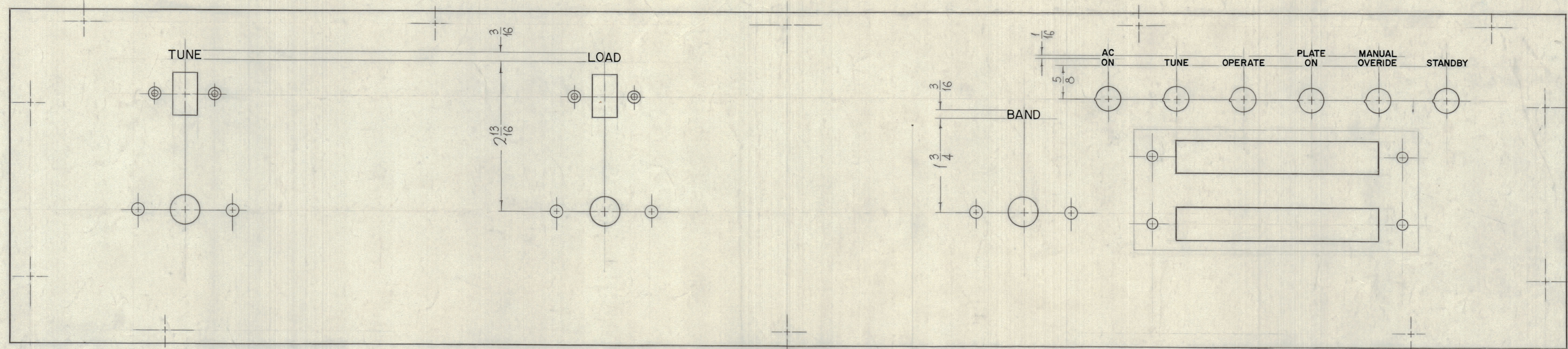


UNLESS OTHERWISE SPECIFIED

- 1- ALL LETTERS 1/8 HIGH GOTHIC, WHITE FILLED.
- 2- ALL LETTER GROUPS TO BE CENTERED ON HOLES, CUTOUTS OR INDICATING LINES.

LETTER HEIGHT	DEPTH OF STROKE	WIDTH OF STROKE
1/8	.010	.020
3/16	.010	.025

REVISIONS						
ZONE	SYM	DESCRIPTION	DATE	E.M.N. NO.	DRAFT	CHKD
X		EXPERIMENTAL RELEASE	12-1-64	X	SLG	
Ø		ORIGINAL RELEASE FOR PRODUCTION	5/19/67	Ø	CV	JLH



ENGRAVING AS PER TMC SPEC. S566

FRONT OF PANEL SHOWN



MARKING PROCESS: AS PER TMC SPEC. S727. ALL LETTERING 1/8 HIGH, BLACK GOTHIC.

REAR VIEW SHOWN

LD1749 Ø

QTY./UNIT	MODEL USED ON	ASSY. NO.
111	A	

REQ'D.	ITEM	PART NUMBER	DESCRIPTION	SYMBOL
F. BUDETTI LIST OF MATERIAL LDG				
MATERIAL			THE TECHNICAL MATERIEL CORP. MAMARONECK, NEW YORK	
FINISH			TITLE MARKING, FRONT PANEL	
UNLESS OTHERWISE SPECIFIED DIMENSIONS ARE IN INCHES AND INCLUDE CHEMICALLY APPLIED OR PLATED FINISHES			DRAWN John C. Biale	DATE 11-16-64
DECIMALS X ± .05 XX ± .01 XXX ± .005			CHECKED aa	DATE 5/19/67
FRACTIONS ± 1/64 ANGLES ± 0° 30'			ELECT. DES. aa	DATE 5/19/67
THE CONTENTS OF THIS DRAWING ARE THE EXCLUSIVE PROPERTY OF THE TECHNICAL MATERIEL CORP. ITS UNAUTHORIZED USE OR REPRODUCTION IN WHOLE OR IN PART IS STRICTLY FORBIDDEN.			MECH. DES.	DATE
NOTES			REV. LTR.	DATE

LD1749