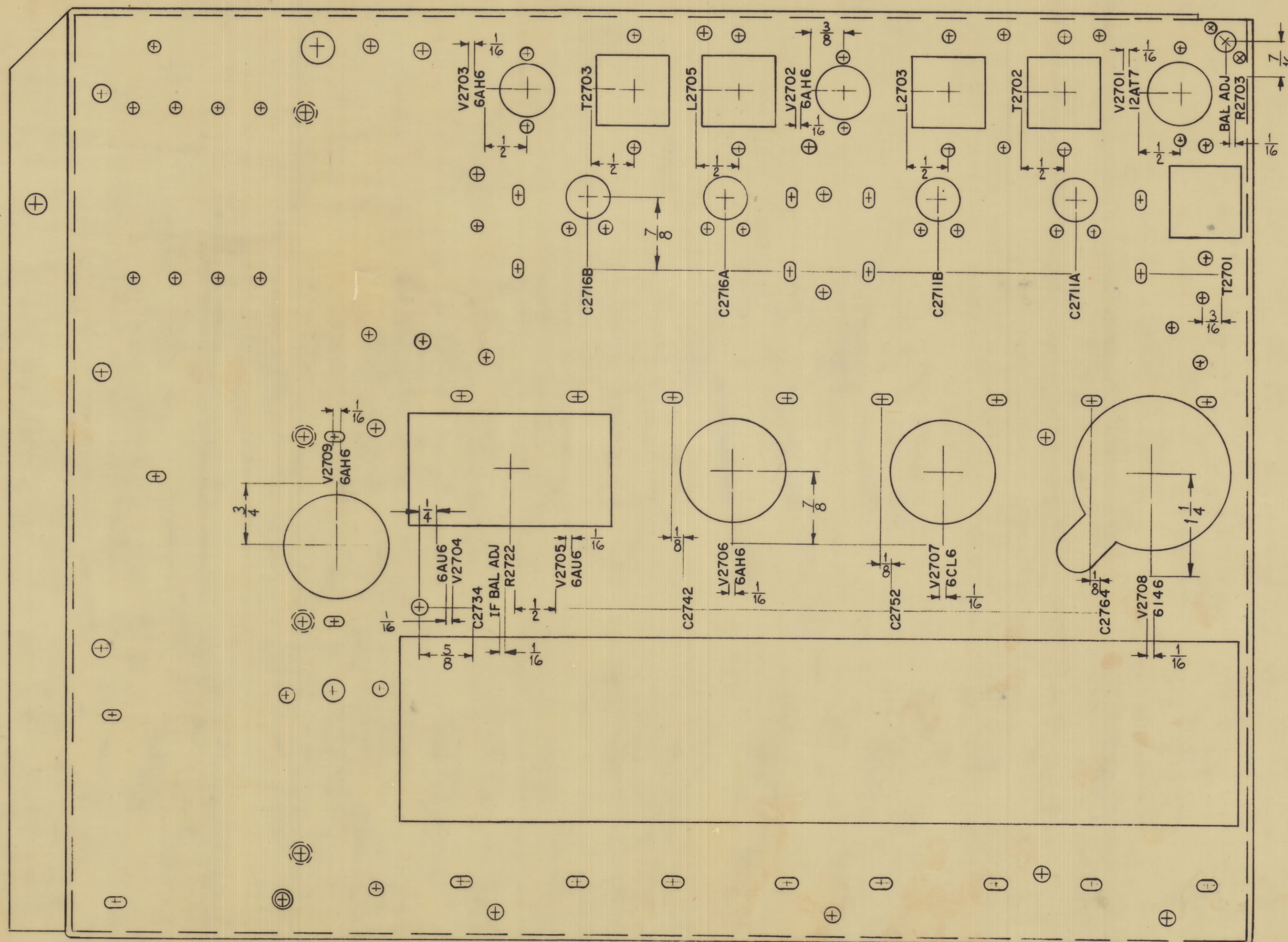
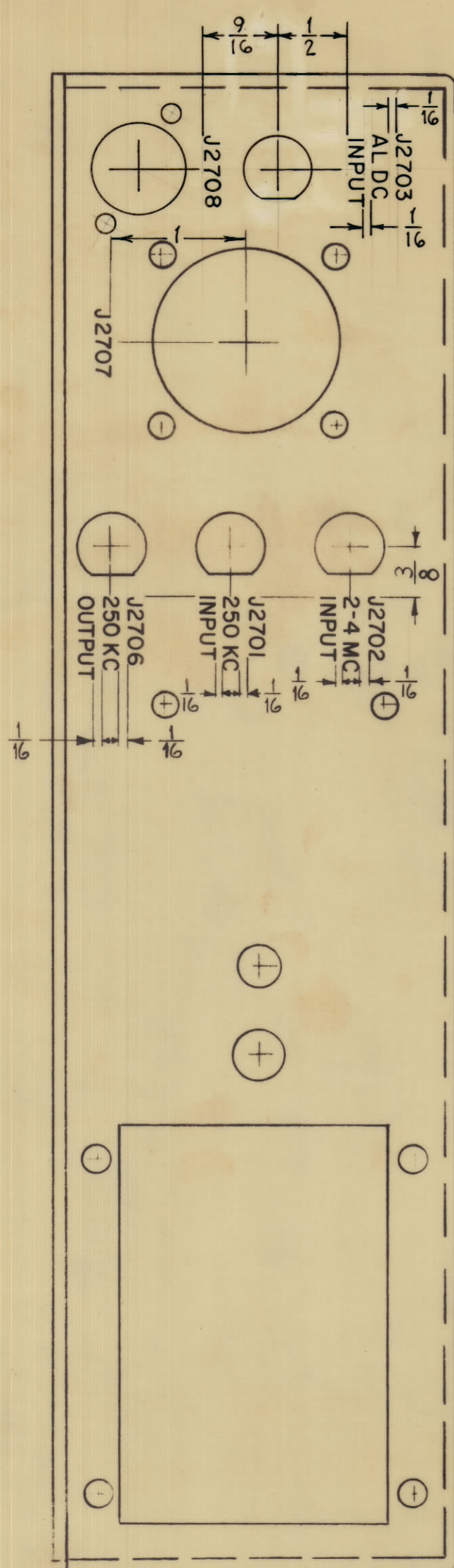


EXTERIOR VIEW SHOWN



ALL LETTERING TO BE 1/8 HIGH BLACK GOTHIC.

MARKING PROCESS: AS PER TMC SPECIFICATION S-727

NOTICE TO PERSONS RECEIVING THIS DRAWING

THE TECHNICAL MATERIEL CORPORATION claims proprietary right in the material disclosed hereon. This drawing is issued in confidence for engineering information only and may not be reproduced or used to manufacture anything shown hereon without permission from THE TECHNICAL MATERIEL CORPORATION to the user. This drawing is loaned for mutual assistance and is subject to recall at any time.

Property of:
 THE TECHNICAL MATERIEL CORPORATION
 MAMARONECK, NEW YORK

REF. MS-4269

REQ. ITEM	PART NO.	DESCRIPTION	SYMBOL
STOCK SIZE			
MATERIAL			
TYPE & TEMPER			
HEAT TREAT. SPEC.			
FINISH & SPEC. NO.			
THE TECHNICAL MATERIEL CORP. MAMARONECK, NEW YORK		LETTERING, MAIN CHASSIS TOP	
DRAWN <i>gjk</i>		ELEC. DES. APP. <i>gjk</i>	
CHECKED <i>gjk</i>		MECH. DES. APP. <i>gjk</i>	
		FINAL APPROVAL	
		LD1747	

REQ. PER UNIT	MODEL	SECTION	ABBY. NO.	DATE
1	CHG-2 B			
USED ON				

<input type="checkbox"/>	ORIGINAL RELEASE FOR PRODUCTION	2-17-65	HLA	
<input checked="" type="checkbox"/>	EXPERIMENTAL RELEASE	2-17-65	HLA	
ISSUE ZONE	DESCRIPTION	DATE	CH. NO.	DRAFTS
			CHECKER	APP.
TOLERANCES				
SCALE:				
DEC. DIM. 2				
FRAC. DIM. 3				
ANGULAR DIM. 3				
MAXIMUM ALLOWABLE TOLERANCES HAVE BEEN DETERMINED AND ANY DEVIATIONS WILL BE CAUSE FOR REJECTION. REMOVE ALL BURRS AND SHARP EDGES				

LD1747 0