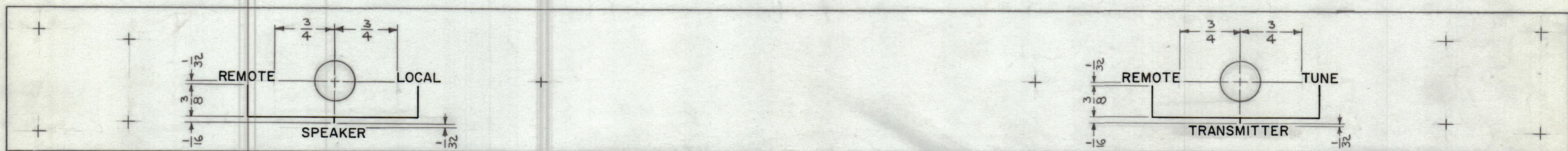


REVISIONS							
ZONE	SYM	DESCRIPTION	DATE	E.M.N. NO.	DRAFT	CHKD	APPD
	X	EXPERIMENTAL RELEASE	1.18.65	X	JTB		
	Ø	ORIGINAL RELEASE FOR PRODUCTION	1.20.65	Ø	JTB	JTB	

MARK TMC P/N 1/8 HIGH  
BLACK GOTHIC (TMC-5727)  
WITH LATEST REV. LETTERS,  
ON REAR OF PANEL.

LD1725-MS4041-



FRONT VIEW OF PANEL SHOWN

HEIGHT OF LETTERS	DEPTH OF STROKE	WIDTH OF STROKE
1/8	.010	.020
LINES	.010	.015

NOTES:

1. ALL LETTERING TO BE 1/8 HIGH GOTHIC, WHITE FILLED, LOCATED AS SHOWN.
2. ALL LINES TO BE WHITE FILLED, LOCATED AS SHOWN

REF: MS4041

REQ'D.	ITEM	PART NUMBER	DESCRIPTION	SYMBOL
BUDETTI LIST OF MATERIAL				
MATERIAL		THE TECHNICAL MATERIEL CORP. MAMARONECK, NEW YORK		
FINISH		TITLE MARKING, PANEL, FRONT MARKING PROCESS: ENGRAVING		
UNLESS OTHERWISE SPECIFIED DIMENSIONS ARE IN INCHES AND INCLUDE CHEMICALLY APPLIED OR PLATED FINISHES		DRAWN JTB	DATE 1.18.65	FINAL APPROVAL
DECIMALS .X ± .05 .XX ± .01 .XXX ± .005		CHECKED JWB	DATE 1-20-65	DATE
FRACTIONS ± 1/64		ELECT. DES. JTB	DATE 1/20/65	LD1725
TOLERANCES ± 0° 30'		MECH. DES. JTB	DATE 1/20/65	Ø
				REV. LTR.

Q'TY./UNIT	MODEL USED ON	ASS'Y. NO.
1	ECPA-1	
SCALE 1:1	CODE A	
THE CONTENTS OF THIS DRAWING ARE THE EXCLUSIVE PROPERTY OF THE TECHNICAL MATERIEL CORP. ITS UNAUTHORIZED USE OR REPRODUCTION IN WHOLE OR IN PART IS STRICTLY FORBIDDEN.		

NOTES

LD1725