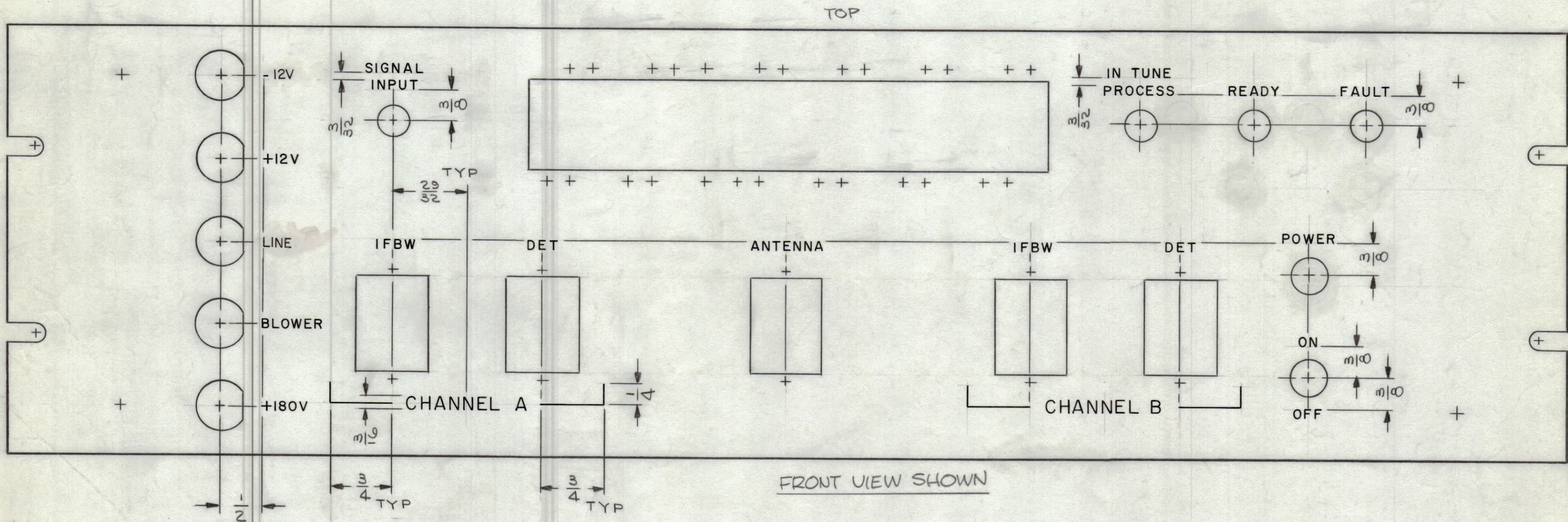


REVISIONS						
ZONE	SYM	DESCRIPTION	DATE	E.M.N. NO.	DRAFT	CHKD
	X	EXPERIMENTAL REL.	1/4/65		JL	
	X1	MS 4254 WAS MS 4054 (ERROR)	5/13/65		GDL	
	Ø	ORIGINAL RELEASE FOR PRODUCTION	5/26/65	-A-	JL	
	A	-12V WAS LINE F LINE WAS -12V (SEE SHEET NO.2)	7/27/65	14520	AVV	JL
	B	SEE SHEET 2 OF 2	10/29/65	15006	AVV	JL
	C	SEE SHEET 2 OF 2	11/18/65	15229	AVV	JL



HEIGHT OF LETTER	DEPTH OF STROKE	WIDTH OF STROKE
1/8	.010	.020
3/16	.010	.025
LINES	.010	.015

- ~ UNLESS OTHERWISE SPECIFIED ~
- 1- ALL LETTER GROUPS TO BE CENTERED ON HOLES.
 - 2- ENGRAVING TO BE 1/8 HIGH GOTHIC.
 - 3- ALL LETTERING & LINEWORK TO BE WHITE FILLED.
 - 4-

REF. : MS 4254

REQ'D.	ITEM	PART NUMBER	DESCRIPTION	SYMBOL
EATON LIST OF MATERIAL				
MATERIAL		THE TECHNICAL MATERIEL CORP. MAMARONECK, NEW YORK		
FINISH		TITLE MARKING - PANEL, FRONT MARKING PROCESS, ENGRAVING		
UNLESS OTHERWISE SPECIFIED DIMENSIONS ARE IN INCHES AND INCLUDE CHEMICALLY APPLIED OR PLATED FINISHES		DRAWN J. LESHINSKI	DATE 1/4/65	FINAL APPROVAL DATE 5/26/65
DECIMALS .X ± .05 .XX ± .01 .XXX ± .005		TOLERANCES	FRACTIONS ± 1/64 ANGLES ± 0° 30'	ELECT. DES. DATE 5/26/65
THE CONTENTS OF THIS DRAWING ARE THE EXCLUSIVE PROPERTY OF THE TECHNICAL MATERIEL CORP. ITS UNAUTHORIZED USE OR REPRODUCTION IN WHOLE OR IN PART IS STRICTLY FORBIDDEN.		MECH. DES. W. JORDAN	DATE 5/26/65	REV. LTR.

Q'TY./UNIT	MODEL USED ON	ASS'Y. NO.
SCALE 1:1	CODE	

NOTES

LD17211C