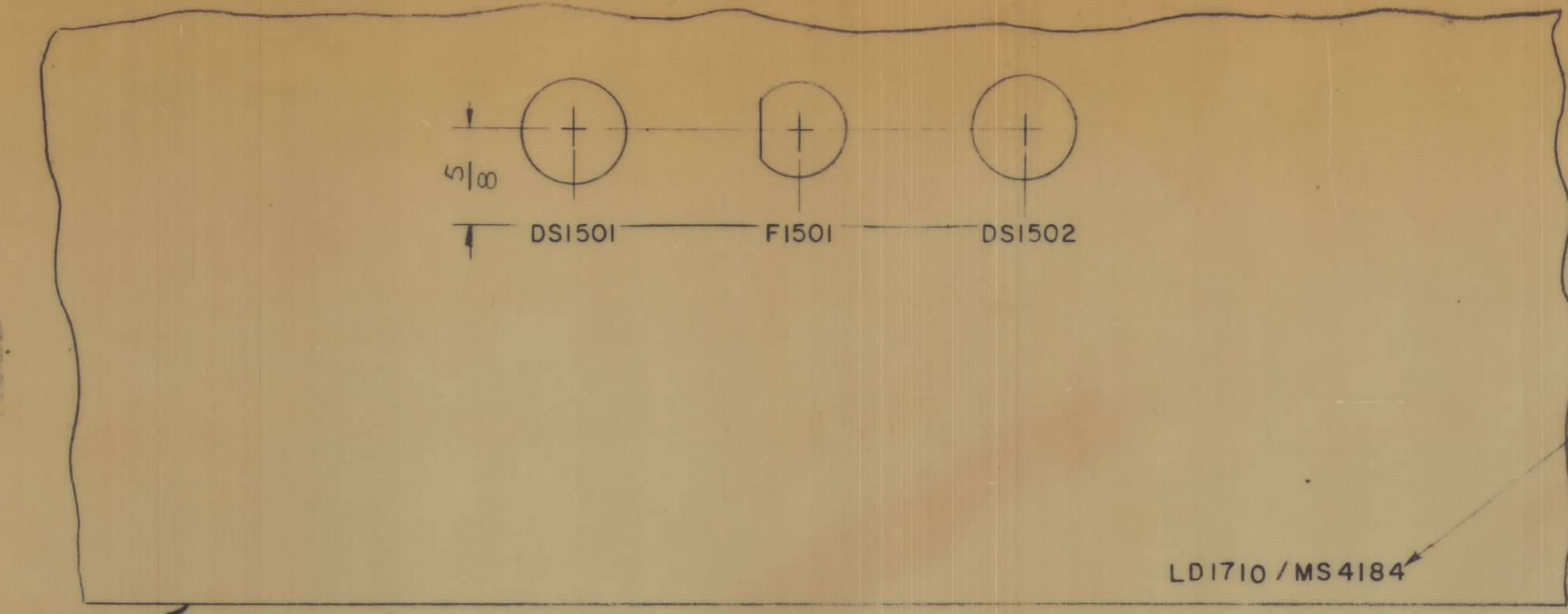


REVISIONS						
ZONE	SYM	DESCRIPTION	DATE	E.M.N. NO.	DRAFT	CHKD
X		EXPER. RELEASE	12-30-64			G.D.L.
XI		NOTE: OBSOLETE ADDED	8-16-65			G.D.L.
B		ORIGINAL RELEASE FOR PRODUCTION	8-24-65			E

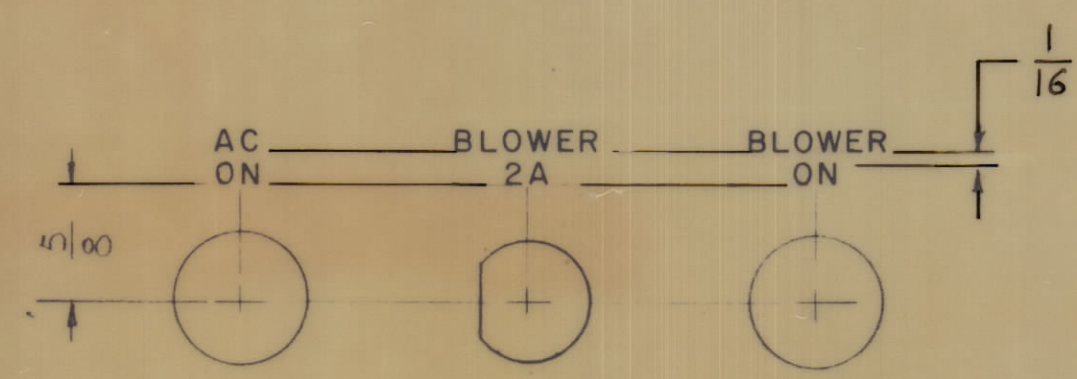
MARKING PROCESS: AS PER TMC SPECIFICATION S-727.
 LETTERING: 1/8 HIGH BLACK GOTHIC, LOCATED AS SHOWN.



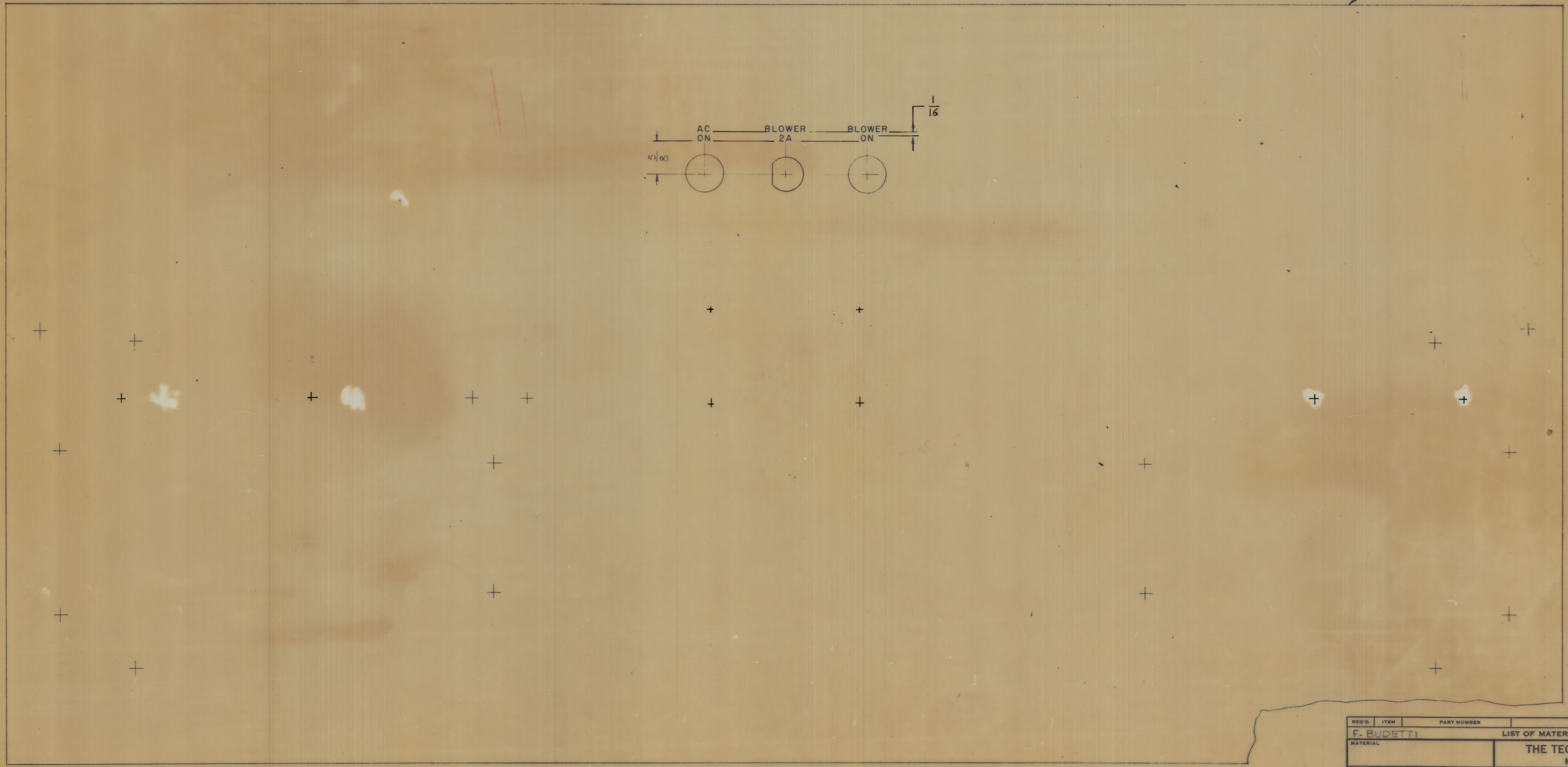
MARK TMC P/No WITH LATEST REV. LETTERS

~~OBSELETE~~
 FOR REFERENCE PURPOSES ONLY.
 8-16-65

TOP REAR VIEW



FRONT VIEW



LD-1710

OBSELETE
 8-16-65

REF: MS4184

HEIGHT OF LETTERS	DEPTH OF STROKE	WIDTH OF STROKE
1/8	.010	.020

UNLESS OTHERWISE SPECIFIED
 1-ENGRAVING TO BE GOTHIC WHITE FILLED SIZE SHOWN ON CHART
 2-AL LETTER GROUPS TO BE CENTERED ON HOLES

NOTES

SITY. UNIT		MODEL USED ON		ASSY. NO.	
SCALE		CODE			
1:1		A			

REQ'D.	ITEM	PART NUMBER	DESCRIPTION	SYMBOL
F. BUDETTI LIST OF MATERIAL				
MATERIAL				
THE TECHNICAL MATERIEL CORP. MAMARONECK, NEW YORK				
FINISH				
TITLE MARKING, FRONT PANEL MARKING PROCESS: ENGRAVING				
UNLESS OTHERWISE SPECIFIED DIMENSIONS ARE IN INCHES AND INCLUDE CHEMICALLY APPLIED OR PLATED FINISHES				
DRAWN		DATE		DATE
G.D.L.		12-30-64		8/16/65
CHECKED		DATE		
ELECT. DES.		DATE		
MECH. DES.		DATE		
TOLERANCES		FRACTIONS		DECIMALS
± .005		± 1/64		± .001
± .01		ANGLES		± 0° 30'
± .005				

LD1710