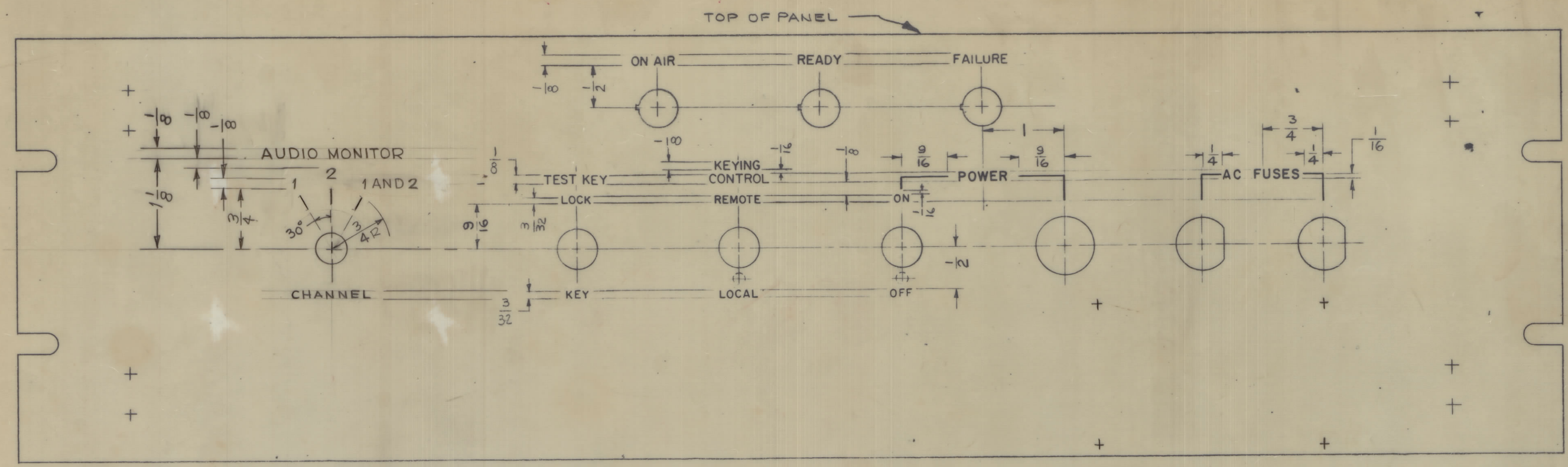


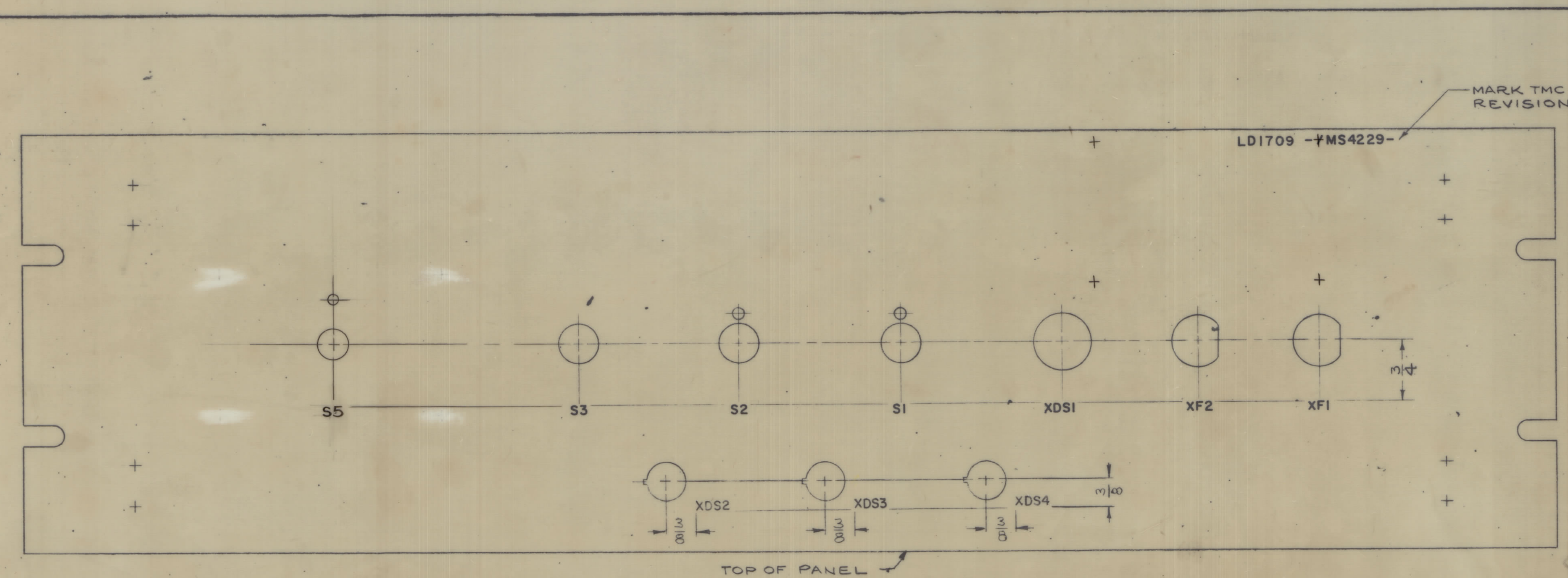
REVISIONS						
ZONE	SYM	DESCRIPTION	DATE	E.M.N. NO.	DRAFT	CHKD
X		EXPERIMENTAL RELEASE	3/6/65	X	AB	
X1		SIZE 3/32 LETTERS WAS 1/8 - SPACING BETWEEN LETTER GROUPS WAS 1/16	3/12/65	X1	GDL	
		ORIGINAL RELEASE FOR PRODUCTION	3-31-65		OK	
A		"ON AIR" "READY" "FAILURE" "XDS2, 3, 4" ADDED. 3 HOLES ADD. TO CONFORM WITH MS4229 REV. "A".	4-29-65	13987	df	
B		ADDED CHANNEL 1, 2; 1 AND 2; AUDIO MONITOR AND S5	9-1-65	14757	ANT	



NOTE:
 1. ALL LETTERING TO BE WHITE FILLED GOTHIC.
 2. ALL LETTER GROUPS TO BE CENTERED ON HOLES UNLESS OTHERWISE SPECIFIED.
 3. ALL LINES TO BE WHITE FILLED.

HEIGHT OF LETTERS	DEPTH OF STROKE	WIDTH OF STROKE
1/8	.010	.020
3/32	.010	.015
LINES	.010	.015

ENGRAVING
FRONT OF PANEL



MARKING AS PER TMC S-727
REAR OF PANEL

MARKING PROCESS: AS PER TMC SPECIFICATION S-727.
 LETTERING: 1/8 HIGH BLACK GOTHIC, LOCATED AS SHOWN.

REF: MS4229

REQ'D.	ITEM	PART NUMBER	DESCRIPTION	SYMBOL
LIST OF MATERIAL				
MATERIAL			THE TECHNICAL MATERIEL CORP. MAMARONECK, NEW YORK	
FINISH			TITLE MARKING, FRONT PANEL ENGRAVING & MARKING	
QTY	UNIT	MODEL USED ON	DATE	FINAL APPROVAL
SCALE	CODE	ASSEY. NO.	DATE	DATE
THE CONTENTS OF THIS DRAWING ARE THE EXCLUSIVE PROPERTY OF THE TECHNICAL MATERIEL CORP. ITS UNAUTHORIZED USE OR REPRODUCTION IN WHOLE OR IN PART IS STRICTLY FORBIDDEN.			DECIMALS 1 ± .05 2 ± .01 3 ± .005	FRACTIONS ± 1/64 ANGLES ± 0° 30'
UNLESS OTHERWISE SPECIFIED DIMENSIONS ARE IN INCHES AND INCLUDE CHEMICALLY APPLIED OR PLATED FINISHES			DRAWN 3/6/65	DATE 3/6/65
ELECT. DES.			DATE	DATE
MECH. DES.			DATE	DATE
SHEET			DATE	DATE

KMCU-1	
SCALE	1:1
CODE	A
THE CONTENTS OF THIS DRAWING ARE THE EXCLUSIVE PROPERTY OF THE TECHNICAL MATERIEL CORP. ITS UNAUTHORIZED USE OR REPRODUCTION IN WHOLE OR IN PART IS STRICTLY FORBIDDEN.	

NOTES

LD1709 B

A

B

REV. LTR.