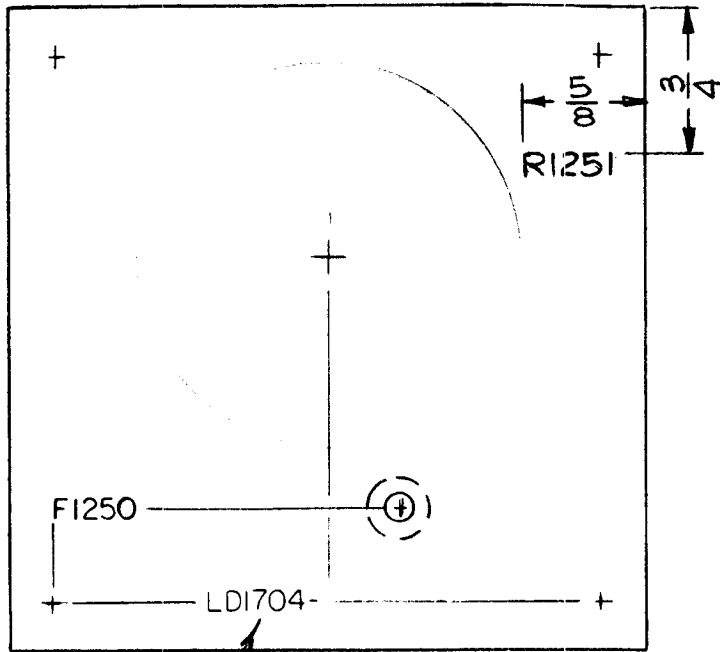


REQ. PER UNIT	USED ON			LD1704	A
	MODEL	ASS'Y. NO.	DATE		
1	GPT-10KLF		11-2-65		



MARKING PROCESS: AS PER TMC SPECIFICATION S-727.  
 LETTERING: 1/8 HIGH BLACK GOTHIC, LOCATED AS SHOWN.

MARK TMC PT. NO.  
 W/LATEST REV.  
 LETTER.

REF: MS 4228-1

REQ. ITEM	PART NO.	F. BUDETTI DESCRIPTION					SYMBOL
		THE TECHNICAL MATERIEL CORP. MAMARONECK, NEW YORK					
A	ADDED "R1251"	3/8/66	15875	HCB	gcb aa		
Ø	ORIGINAL RELEASE	12/21/65	Ø		gcb		
SYM	DESCRIPTION	DATE	CH. NO.	DRAFTS	CHECKER	ENG. APP.	
UNLESS OTHERWISE SPECIFIED DIMENSIONS ARE IN INCHES AND INCLUDE CHEMICALLY APPLIED OR PLATED FINISHES		SCALE 1:1					
DECIMALS .X ± .05 .XX ± .01 .XXX ± .005	TOLERANCES	FRACTIONS ± 1/64 ANGLES ± 0° 30'	CODE A				
FINISH & SPEC. NO.		ELEC. DES. APP.	MECH. DES. APP.	DRAWN			LD1704 A
		TYPE & TEMPER			HEAT TREAT. SPEC.	CHECKED	FINAL APPROVAL
		ML					