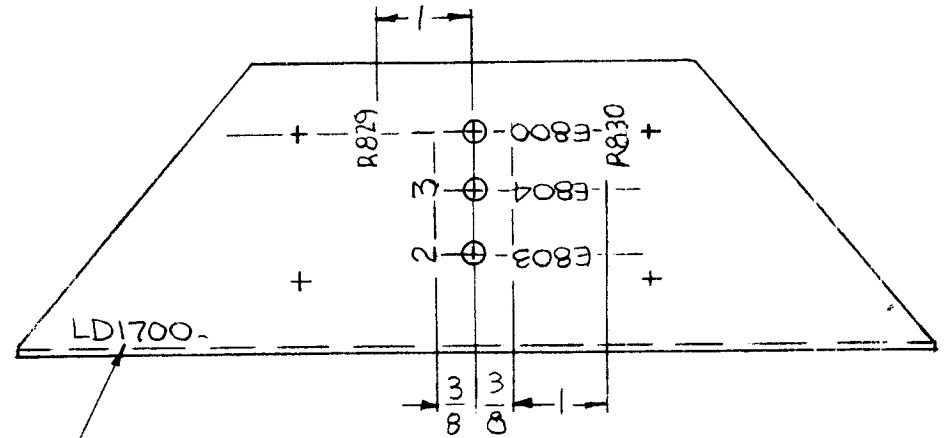
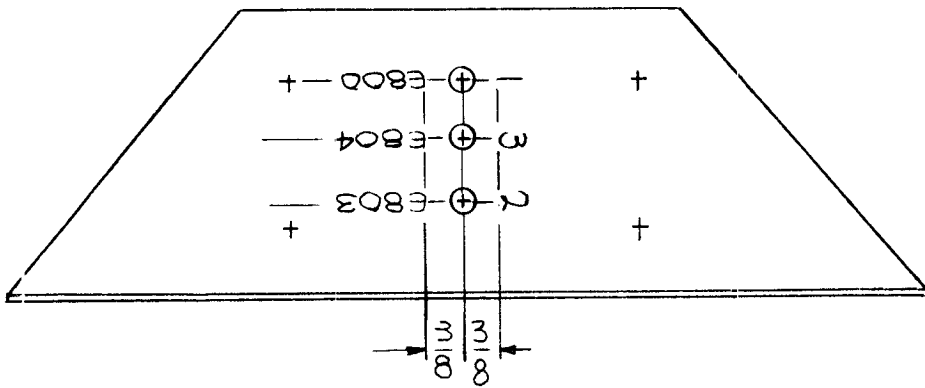


| | | | | | |
|---------------|-----------|------------|--------|--------|---|
| REQ. PER UNIT | USED ON | | | LD1700 | A |
| | MODEL | ASS'Y. NO. | DATE | | |
| 1 | GPT-10KLF | AP125 | 3-1-66 | | |



MARKING PROCESS: AS PER TMC SPECIFICATION S-727.
 LETTERING: 1/8 HIGH BLACK GOTHIC, LOCATED AS SHOWN.

MARK TMC P/N
 1/8 HIGH GOTHIC
 W/LATEST REV.
 LETTER.

REF: MS 4213

| REQ. | ITEM | PART NO. | F. BUDETTI DESCRIPTION | | | | SYMBOL | |
|-------------|---|-----------|--|--------------------|-------------------|-----------------|---------|----------------|
| | | | THE TECHNICAL MATERIEL CORP. MAMARONECK, NEW YORK | | | | | |
| A | | | MARKING, RT SIDE PLATE ZENER BD. | | | | | |
| Ø | | | MARKING PROCESS: AS PER TMC SPEC. S727 | | | | | |
| SYM | DESCRIPTION | DATE | CH. NO. | DRAFTS | CHECKER | ENG. APP. | | |
| | UNLESS OTHERWISE SPECIFIED DIMENSIONS ARE IN INCHES AND INCLUDE CHEMICALLY APPLIED OR PLATED FINISHES | SCALE | 1/2 | | | | | |
| DECIMALS | TOLERANCES | FRACTIONS | CODE | | | | | |
| .X ± .05 | | ± 1/64 | A | | | | | |
| .XX ± .01 | | ANGLES | | | | | | |
| .XXX ± .005 | | ± 0° 30' | | | | | | |
| | | | | TYPE & TEMPER | HEAT TREAT. SPEC. | DRAWN | CHECKED | FINAL APPROVAL |
| | | | | | | | | |
| | | | | FINISH & SPEC. NO. | ELEC. DES. APP. | MECH. DES. APP. | LD1700 | A |

M. A. KLEIN

REPROVAL NO. 440H

23845