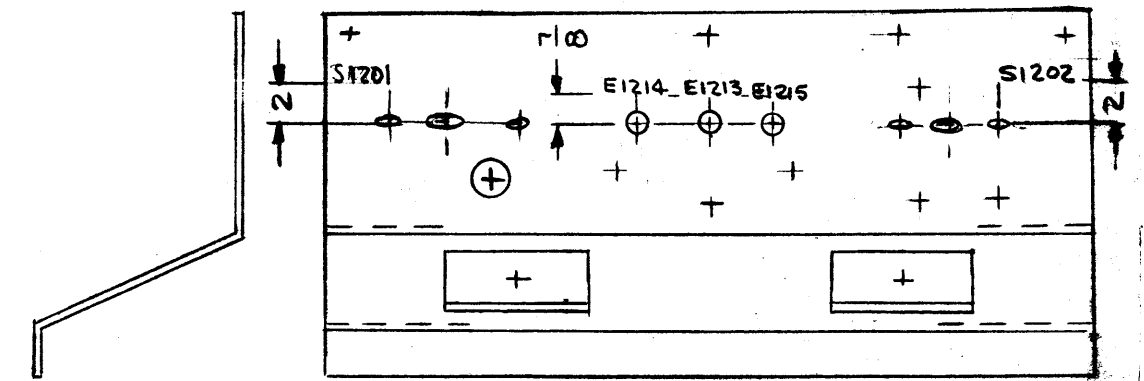
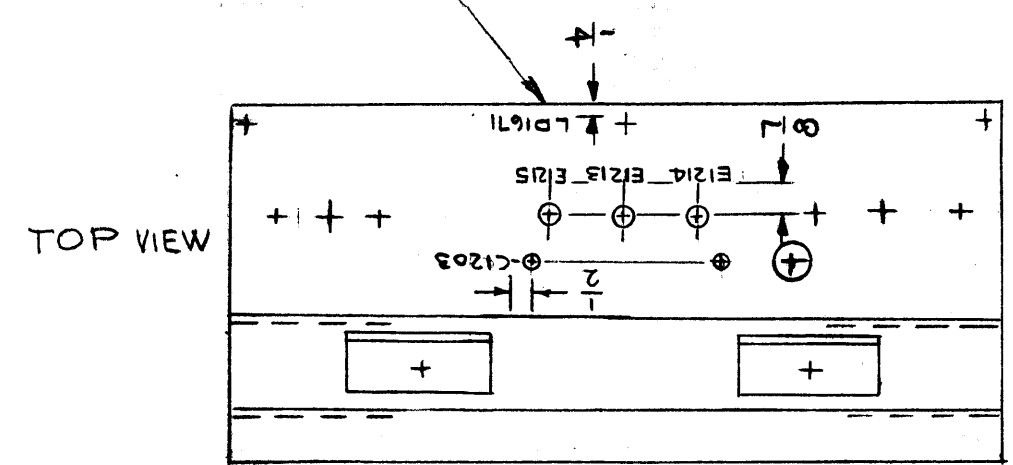


LD1671

REVISIONS					
SYM	DESCRIPTION	DATE	E.M.N. NO.	DRAFT	CHKD APPD
X1	CUTOUTS WERE HOLES 3/4 WAS 2 1/2	11-6-65	X1	SKY	MS
X2	DWG. WAS $\varnothing$ SIZE, LD1671 WAS LD1671 / MS4163	12-21-65	X2	G.D.L.	
X3	M1200, M1201 DELETED	12-22-65		Jc	MD
$\varnothing$	ORIGINAL RELEASE FOR PRODUCTION	12-22-65		Jc	

**MARKING PROCESS: AS PER TMC SPECIFICATION S-727.**  
**LETTERING: 1/8 HIGH BLACK GOTHIC, LOCATED AS SHOWN.**

MARK TMC PART NO. WITH LATEST REVISION LETTER.



BOTTOM VIEW -

REF: 4163

1	GPT-10KLF	
Q'TY./UNIT	MODEL USED ON	ASS'Y. NO.
SCALE	CODE A	
THE CONTENTS OF THIS DRAWING ARE THE EXCLUSIVE PROPERTY OF THE TECHNICAL MATERIEL CORP. ITS UNAUTHORIZED USE OR REPRODUCTION IN WHOLE OR IN PART IS STRICTLY FORBIDDEN.		

REQ'D.	ITEM	PART NUMBER	DESCRIPTION	SYMBOL
<b>BUDETTI LIST OF MATERIAL</b>				
MATERIAL		<b>THE TECHNICAL MATERIEL CORP. MAMARONECK, NEW YORK</b>		
FINISH		TITLE <b>MARKING, BAND SWITCH CHASSIS</b>		
UNLESS OTHERWISE SPECIFIED DIMENSIONS ARE IN INCHES AND INCLUDE CHEMICALLY APPLIED OR PLATED FINISHES		DRAWN G.D.L.	DATE 12-21-65	FINAL APPROVAL <i>[Signature]</i>
DECIMALS .X ± .05 .XX ± .01 .XXX ± .005		CHECKED JCB	DATE 12-21-65	DATE 12/22/65
FRACTIONS ± 1/64 ANGLES ± 0° 30'		ELECT. DES. <i>[Signature]</i>	DATE	LD1671
TOLERANCES		MECH. DES. <i>[Signature]</i>	DATE	$\varnothing$
		M/L <i>[Signature]</i>	DATE 12/22/65	REV. LTR.

NOTES