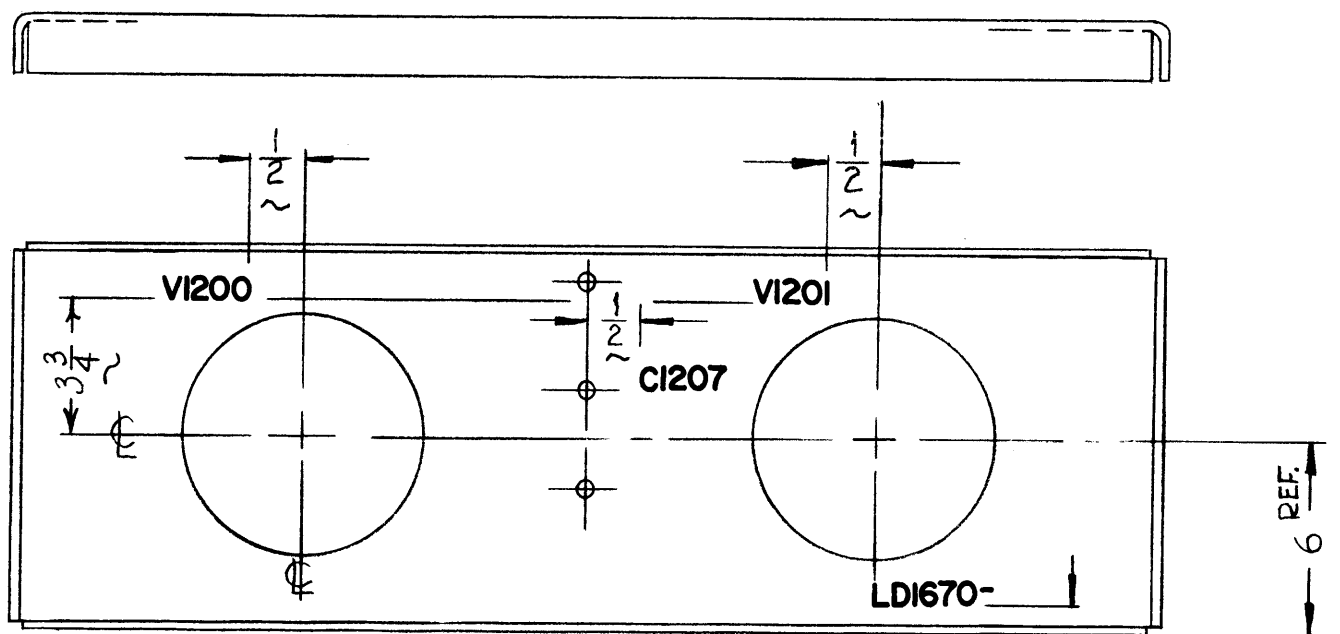
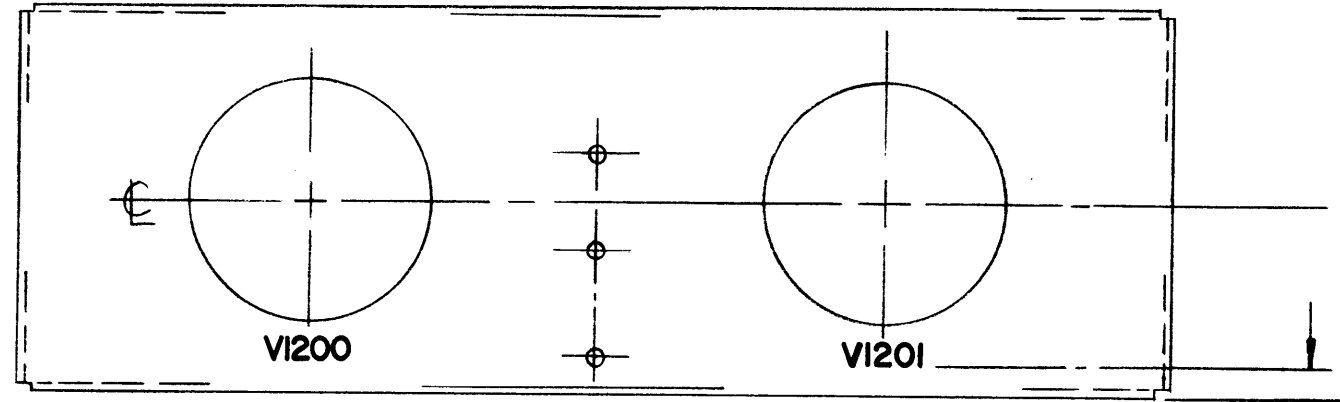


LD1670



REVISIONS

SYM	DESCRIPTION	DATE	E.M.N. NO.	DRAFT	CHKD	APPD
Ø	ORIGINAL RELEASE FOR PRODUCTION	3-31-66	Ø	WU		

- NOTES
- 1- MARKING PROCESS: PER TMC SPEC 9727
  - 2- ALL LETTERING 1/8 HIGH BLACK GOTHIC

REF: MS4159

REQ'D.	ITEM	PART NUMBER	DESCRIPTION	SYMBOL
<b>LIST OF MATERIAL</b>				
MATERIAL		THE TECHNICAL MATERIEL CORP. MAMARONECK, NEW YORK		
FINISH		TITLE MARKING, TOP COVER WRAPAROUND CHASSIS		
UNLESS OTHERWISE SPECIFIED DIMENSIONS ARE IN INCHES AND INCLUDE CHEMICALLY APPLIED OR PLATED FINISHES		DRAWN WU	DATE 3-23-66	FINAL APPROV <i>[Signature]</i>
		CHECKED JCS	DATE 3/28/66	DATE 3/31/66
		ELECT. DES. JG	DATE 3-29-66	LD1670
		MECH. DES.	DATE	Ø
		SHEET		REV. LTR.

<b>GPT-10KLF</b>		
Q'TY./UNIT	MODEL USED ON	ASS'Y. NO.
SCALE	CODE	
THE CONTENTS OF THIS DRAWING ARE THE EXCLUSIVE PROPERTY OF THE TECHNICAL MATERIEL CORP. ITS UNAUTHORIZED USE OR REPRODUCTION IN WHOLE OR IN PART IS STRICTLY FORBIDDEN.		

NOTES