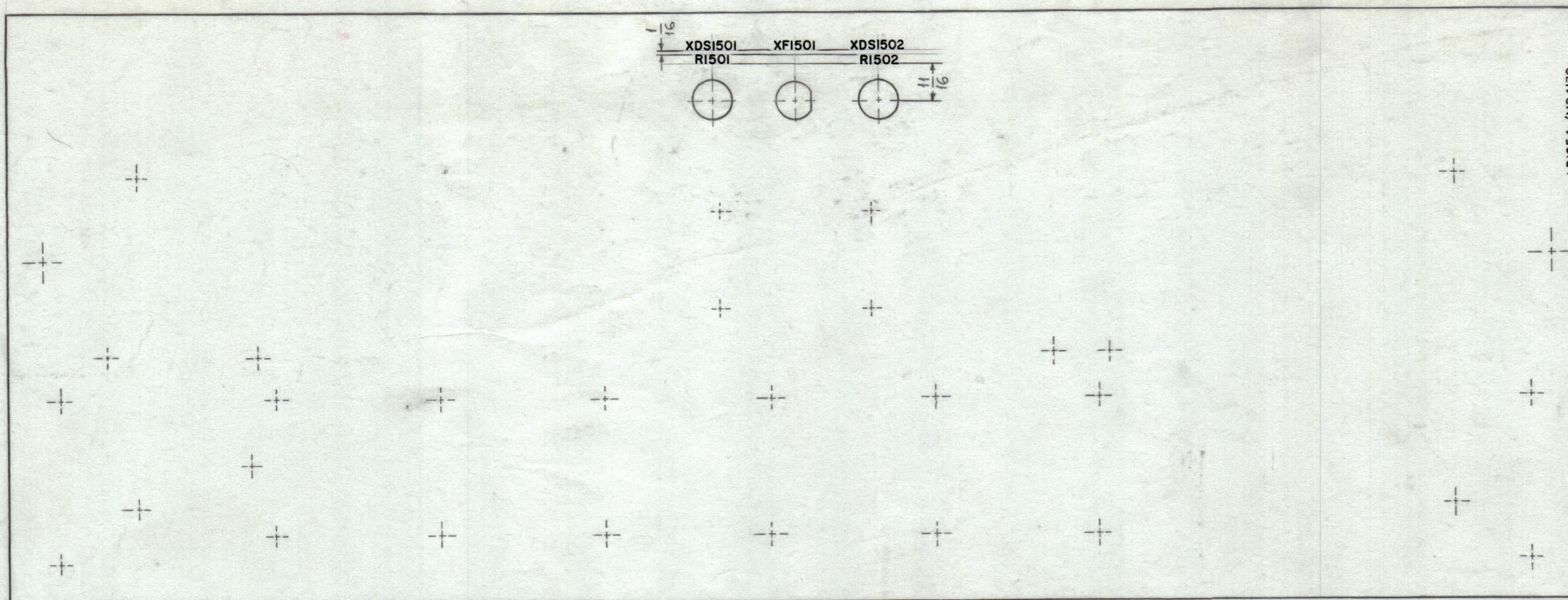


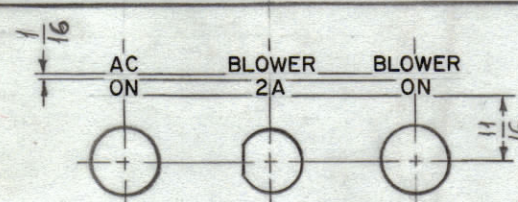
MARKING PROCESS: AS PER TMC SPECIFICATION S-727.
 LETTERING: 1/8 HIGH BLACK GOTHIC, LOCATED AS SHOWN.

REVISIONS						
ZONE	SYM	DESCRIPTION	DATE	E.M.N. NO.	DRAFT	CHKD
	X	EXPERIMENTAL RELEASE	11-23-64	X	SRG	
	X1	XDS1501 WAS XDS 650, XDS 1502 WAS XDS 651 R1501 WAS R650, R1502 WAS R651, XF 1501 WAS XF650	2-26-65	X1	SRG	
	Ø	ORIGINAL RELEASE FOR PRODUCTION	2-26-65	Ø	SRG	
	A	'OBSOLETE' FOR REF. USE ONLY ADDED	4-24-65	15234	AVV	

MARKING
REAR VIEW



MARK TMC PART NO.
1/8 HIGH GOTHIC
W/LATEST REV.
LETTER.



ENGRAVING
FRONT VIEW

OBSOLETE
FOR REF. USE ONLY

HEIGHT OF LETTERS	DEPTH OF STROKE	WIDTH OF STROKE
1/8	.010	.020

UNLESS OTHERWISE SPECIFIED
 1~ALL LETTERING TO BE WHITE FILLED.
 2~ALL LETTER GROUPS TO BE CENTERED ON HOLES.
 3~ENGRAVING TO BE GOTHIC WHITE FILLED SIZE SHOWN ON CHART.

NOTES

1	HVRC-1 P/OTST()10K	
Q'TY./UNIT	MODEL USED ON	ASS'Y. NO.
SCALE 1/2:1	CODE A	

THE CONTENTS OF THIS DRAWING ARE THE EXCLUSIVE PROPERTY OF THE TECHNICAL MATERIEL CORP. ITS UNAUTHORIZED USE OR REPRODUCTION IN WHOLE OR IN PART IS STRICTLY FORBIDDEN.

REF: MS4139-

REQ'D.	ITEM	PART NUMBER	DESCRIPTION	SYMBOL
F. BUDETTI LIST OF MATERIAL				
MATERIAL		THE TECHNICAL MATERIEL CORP. MAMARONECK, NEW YORK		
FINISH		TITLE MARKING, PANEL, FRONT MARKING PROCESS: ENGRAVING		
UNLESS OTHERWISE SPECIFIED DIMENSIONS ARE IN INCHES AND INCLUDE CHEMICALLY APPLIED OR PLATED FINISHES		DRAWN SRG	DATE 11-23-64	FINAL APPROVAL
DECIMALS .X ± .05 .XX ± .01 .XXX ± .005		CHECKED	DATE	DATE
FRACTIONS ± 1/64 ± 1/32		ELECT. DES.	DATE	DATE
TOLERANCES ANGLES ± 0° 30'		MECH. DES.	DATE	DATE
			SHEET	REV. LTR.

LD1654 A