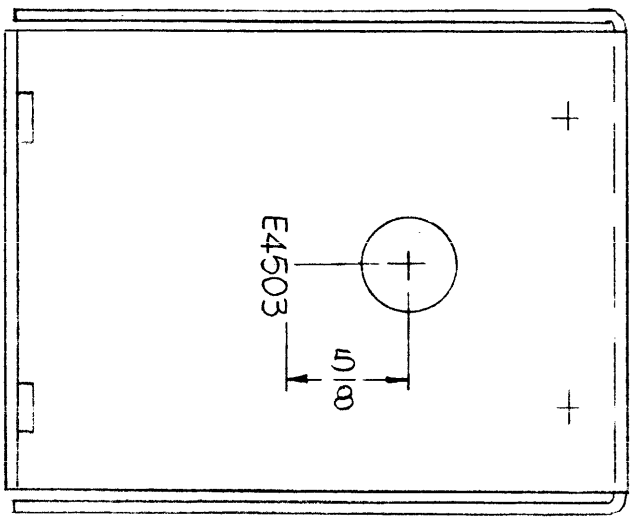


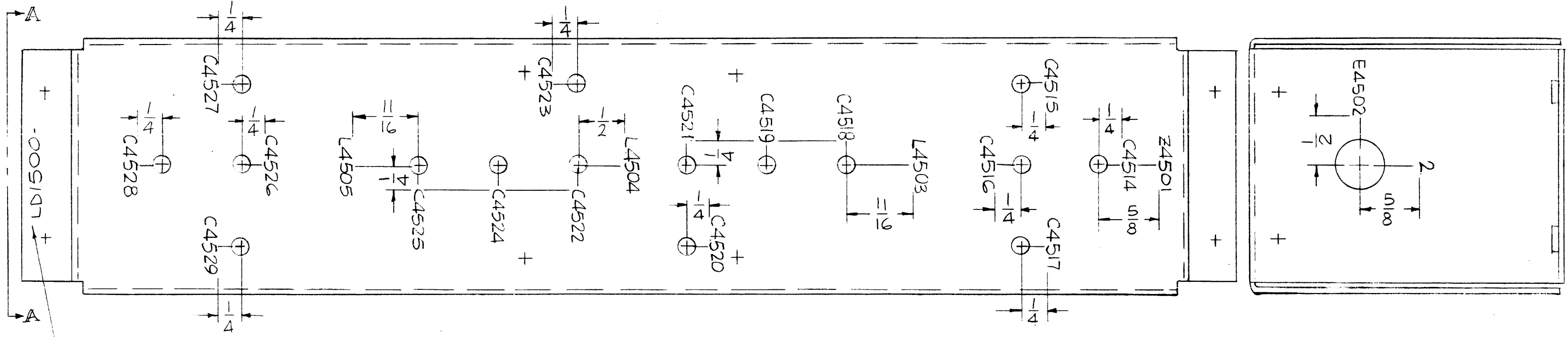
X  
LD1500

**REVISIONS**

SYM	DESCRIPTION	DATE	E.M.N. NO.	DRAFT	CHKD	APFD
X	EXP. RELEASE	10-10-66	X			Q203
Ø	ORIGINAL RELEASE	5/9/73		CS		



VIEW -A-A



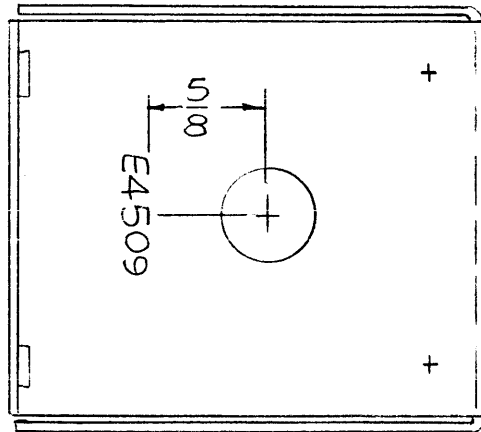
MARK TMC P/N  
1/8 HIGH GOTHIC  
W/LATEST REV.  
LETTER.

**MARKING PROCESS: AS PER TMC SPECIFICATION S-727.**

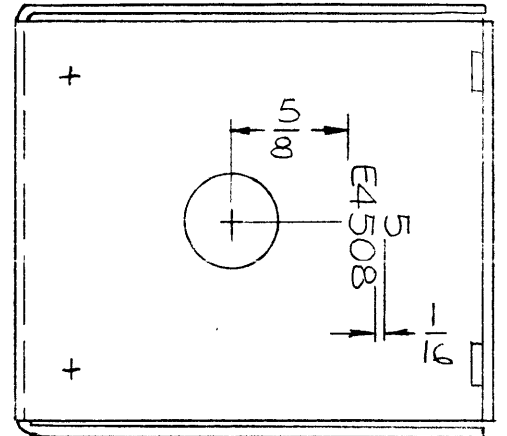
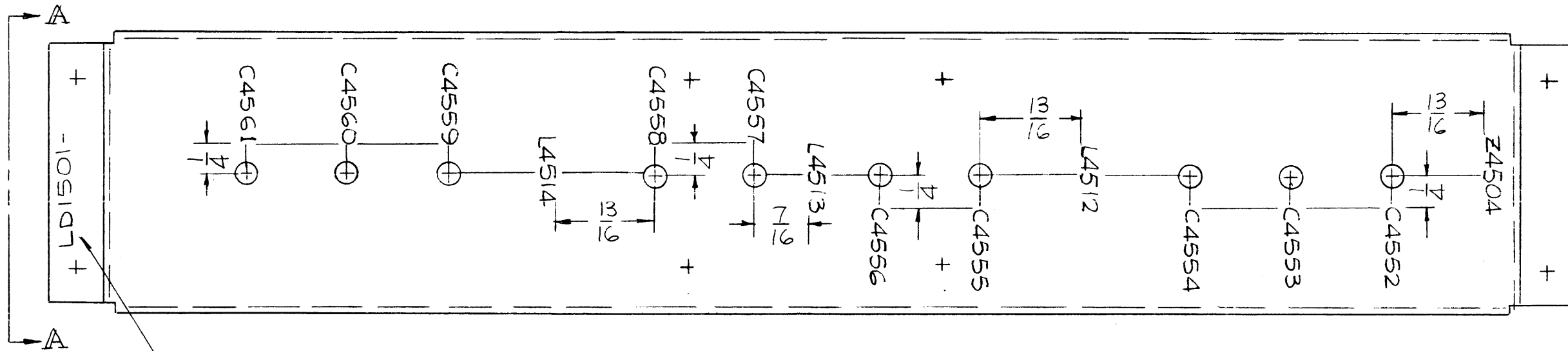
**LETTERING: 1/8 HIGH BLACK GOTHIC, LOCATED AS SHOWN.**

REF: MS 5063-

REQ'D.	ITEM	PART NUMBER	DESCRIPTION	SYMBOL
<b>F. BUDETTI LIST OF MATERIAL</b>				
MATERIAL		<b>THE TECHNICAL MATERIEL CORP. MAMARONECK, NEW YORK</b>		
FINISH		TITLE MARKING, BOX, FILTER AS PER TMC SPEC. S-727		
UNLESS OTHERWISE SPECIFIED DIMENSIONS ARE IN INCHES AND INCLUDE CHEMICALLY APPLIED OR PLATED FINISHES		DRAWN	DATE	FINAL APPROVAL
		CHECKED	DATE	DATE
DECIMALS .X ± .05 .XX ± .01 .XXX ± .005		TOLERANCES		DATE
		FRACTIONS ± 1/64 ANGLES ± 0° 30'		
NOTES		DATE		DATE
THE CONTENTS OF THIS DRAWING ARE THE EXCLUSIVE PROPERTY OF THE TECHNICAL MATERIEL CORP. ITS UNAUTHORIZED USE OR REPRODUCTION IN WHOLE OR IN PART IS STRICTLY FORBIDDEN.		DATE		DATE
		SHEET		REV. LTR.



VIEW - A - A



MARK TMC P/N  
1/8" HIGH GOTHIC  
W/LATEST REV.  
LETTER.

MARKING PROCESS: AS PER TMC SPECIFICATION S-727.

LETTERING: 1/8" HIGH BLACK GOTHIC, LOCATED AS SHOWN.

NOTES

1	TFP-2.5K	
Q'TY./UNIT	MODEL USED ON	ASS'Y. NO.
SCALE 1:1	CODE A	S401-451 S401- S401-

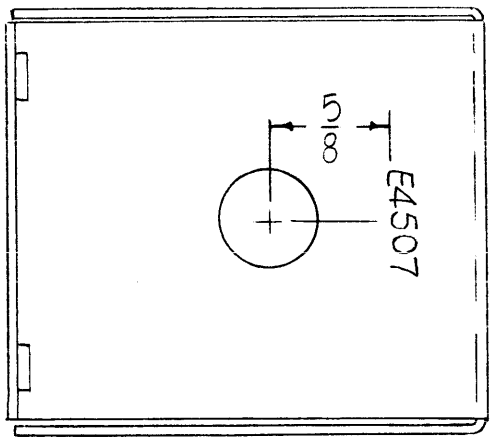
THE CONTENTS OF THIS DRAWING ARE THE EXCLUSIVE PROPERTY OF THE TECHNICAL MATERIEL CORP. ITS UNAUTHORIZED USE OR REPRODUCTION IN WHOLE OR IN PART IS STRICTLY FORBIDDEN.

LD1501 X

REVISIONS						
SYM	DESCRIPTION	DATE	E.M.N. NO.	DRAFT	CHKD	APPD
X	EXP. RELEASE	10-10-66	X	<i>[Signature]</i>	<i>[Signature]</i>	<i>[Signature]</i>
Ø	ORIGINAL RELEASE	5-9-73		CS		

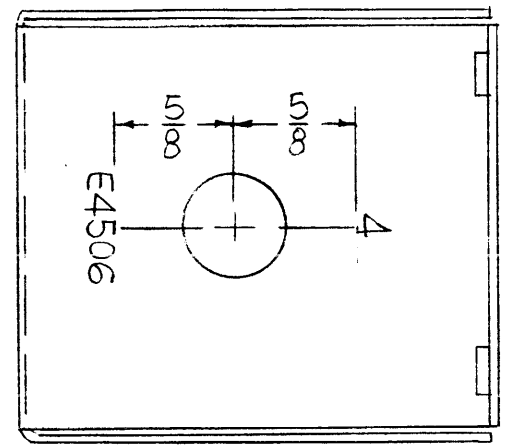
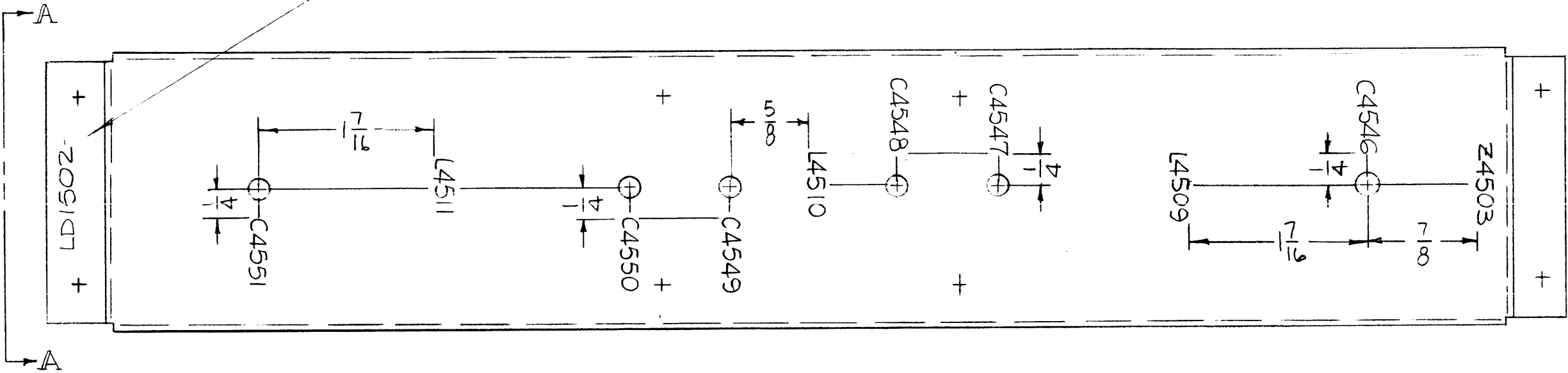
REF: MS5065

REQ'D.	ITEM	PART NUMBER	DESCRIPTION	SYMBOL
F. BUDETTI LIST OF MATERIAL				
MATERIAL		THE TECHNICAL MATERIEL CORP. MAMARONECK, NEW YORK		
FINISH		TITLE MARKING, BOX, FILTER AS PER TMC SPEC. S-727		
UNLESS OTHERWISE SPECIFIED DIMENSIONS ARE IN INCHES AND INCLUDE CHEMICALLY APPLIED OR PLATED FINISHES		DRAWN <i>[Signature]</i>	DATE 9-30-66	FINAL APPROVAL <i>[Signature]</i>
DECIMALS .X ± .05 .XX ± .01 .XXX ± .005		TOLERANCES		DATE 5/9/73
FRACTIONS ± 1/64 ANGLES ± 0° 30'		ELECT. DES. <i>[Signature]</i>	DATE	LD1501
		MECH. DES.	DATE	Ø
SHEET				REV. LTR.



VIEW-A-A

MARK TMC P/N  
1/8 HIGH GOTHIC  
W/LATEST REV.  
LETTER.



LD1502  
X

REVISIONS						
SYM	DESCRIPTION	DATE	E.M.N. NO.	DRAFT	CHKD	APPD
X	EXP. RELEASE	10-10-66	X	<i>[Signature]</i>	W	<i>[Signature]</i>
Ø	ORIGINAL RELEASE	5-9-73		CS		

MARKING PROCESS: AS PER TMC SPECIFICATION S-727.  
LETTERING: 1/8 HIGH BLACK GOTHIC, LOCATED AS SHOWN.

NOTES

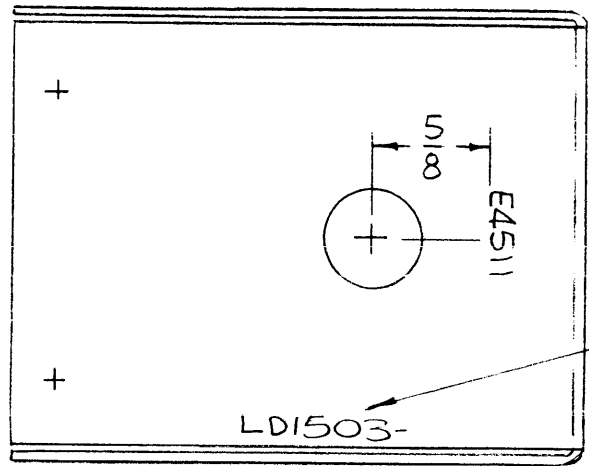
Q'TY./UNIT	MODEL USED ON	ASS'Y. NO.
1	TFP-2.5K	
SCALE	CODE	S401-451
1:1	A	S401-
THE CONTENTS OF THIS DRAWING ARE THE EXCLUSIVE PROPERTY OF THE TECHNICAL MATERIEL CORP. ITS UNAUTHORIZED USE OR REPRODUCTION IN WHOLE OR IN PART IS STRICTLY FORBIDDEN.		

REF: MS 5062

REQ'D.	ITEM	PART NUMBER	DESCRIPTION	SYMBOL
F. BUDETTI LIST OF MATERIAL				
MATERIAL			THE TECHNICAL MATERIEL CORP. MAMARONECK, NEW YORK	
FINISH			TITLE MARKING, BOX FILTER AS PER TMC SPEC. S-727	
UNLESS OTHERWISE SPECIFIED DIMENSIONS ARE IN INCHES AND INCLUDE CHEMICALLY APPLIED OR PLATED FINISHES			DRAWN <i>[Signature]</i> DATE 9-29-66 CHECKED <i>[Signature]</i> DATE ELECT. DES. DATE MECH. DES. DATE	FINAL APPROVAL <i>[Signature]</i> DATE 5/9/73 SHEET LD1502 REV. LTR. Ø
DECIMALS	TOLERANCES		FRACTIONS	
.X ± .05 .XX ± .01 .XXX ± .005			± 1/64 ANGLES ± 0° 30'	

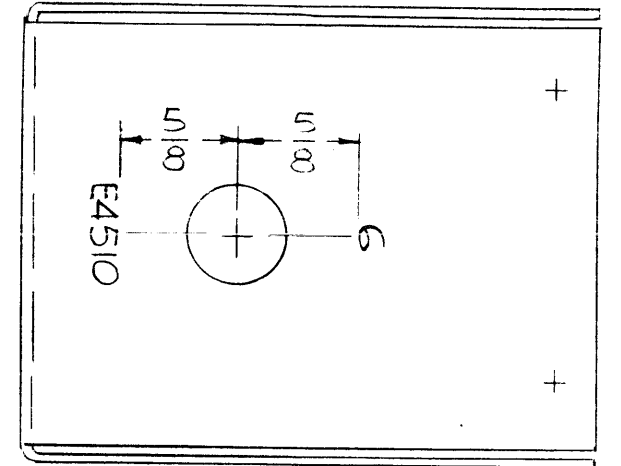
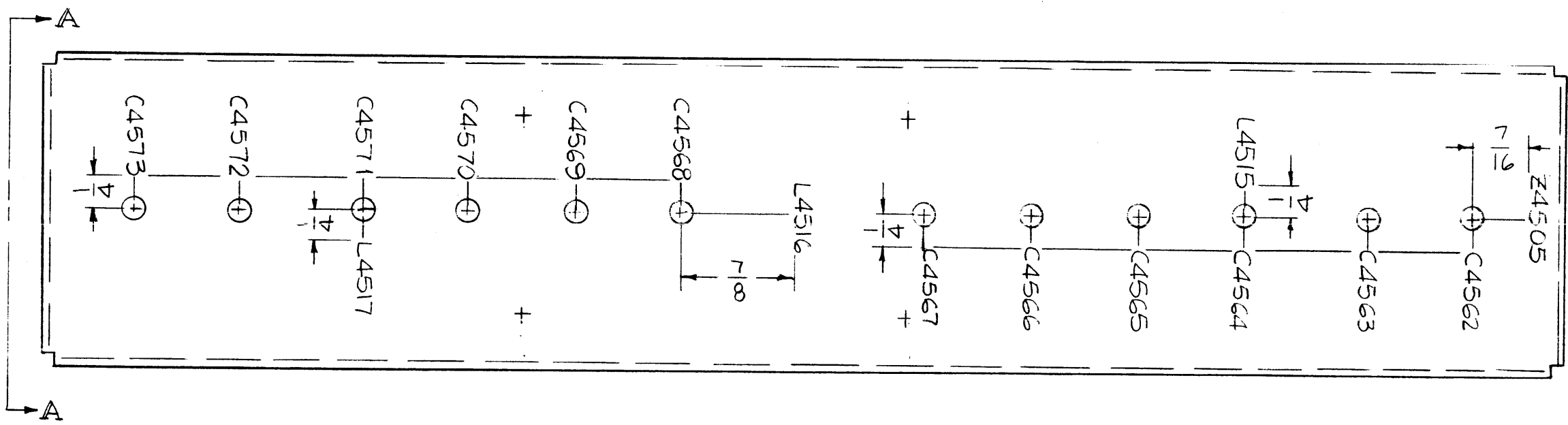
LD1503

REVISIONS					
SYM	DESCRIPTION	DATE	E.M.N. NO.	DRAFT	CHKD APPD
X	EXP. RELEASE	10-10-66	X		W RB
<del>ET</del>	<del>ORIGINAL RELEASE</del>	5-9-73		CS	



VIEW - A-A

MARK TMC P/N  
1/8 HIGH GOTHIC  
W/LATEST REV.  
LETTER



MARKING PROCESS: AS PER TMC SPECIFICATION S-727.  
LETTERING: 1/8 HIGH BLACK GOTHIC, LOCATED AS SHOWN.

NOTES

Q'TY./UNIT	MODEL USED ON	ASS'Y. NO.
1	TFP-2.5K	
SCALE	CODE	S401-451
1:1	A	S401-
THE CONTENTS OF THIS DRAWING ARE THE EXCLUSIVE PROPERTY OF THE TECHNICAL MATERIEL CORP. ITS UNAUTHORIZED USE OR REPRODUCTION IN WHOLE OR IN PART IS STRICTLY FORBIDDEN.		

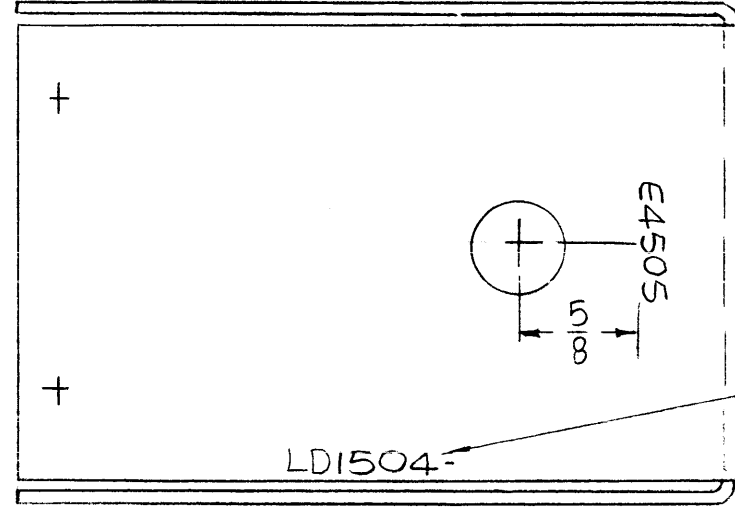
REF: MS 5067-

REQ'D.	ITEM	PART NUMBER	DESCRIPTION	SYMBOL
F. BUDETTI LIST OF MATERIAL				
MATERIAL			THE TECHNICAL MATERIEL CORP. MAMARONECK, NEW YORK	
FINISH			TITLE MARKING, BOX, FILTER AS PER TMC SPEC, S727	
UNLESS OTHERWISE SPECIFIED DIMENSIONS ARE IN INCHES AND INCLUDE CHEMICALLY APPLIED OR PLATED FINISHES			DRAWN <i>[Signature]</i> DATE 9-30-66 CHECKED <i>[Signature]</i> DATE ELECT. DES. DATE MECH. DES. DATE	FINAL APPROVAL <i>[Signature]</i> DATE 5/9/73 SHEET LD1503 REV. LTR. <i>[Signature]</i>
DECIMALS		FRACTIONS		
.X ± .05		± 1/64		
.XX ± .01		ANGLES		
.XXX ± .005		± 0° 30'		

X  
LD1504

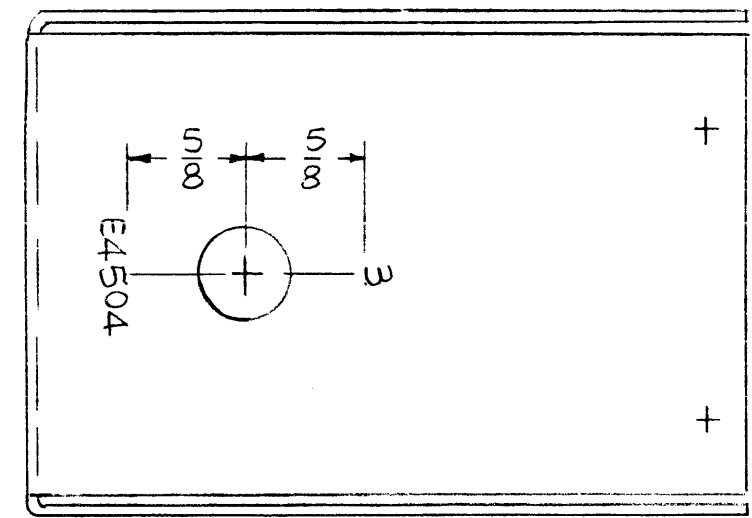
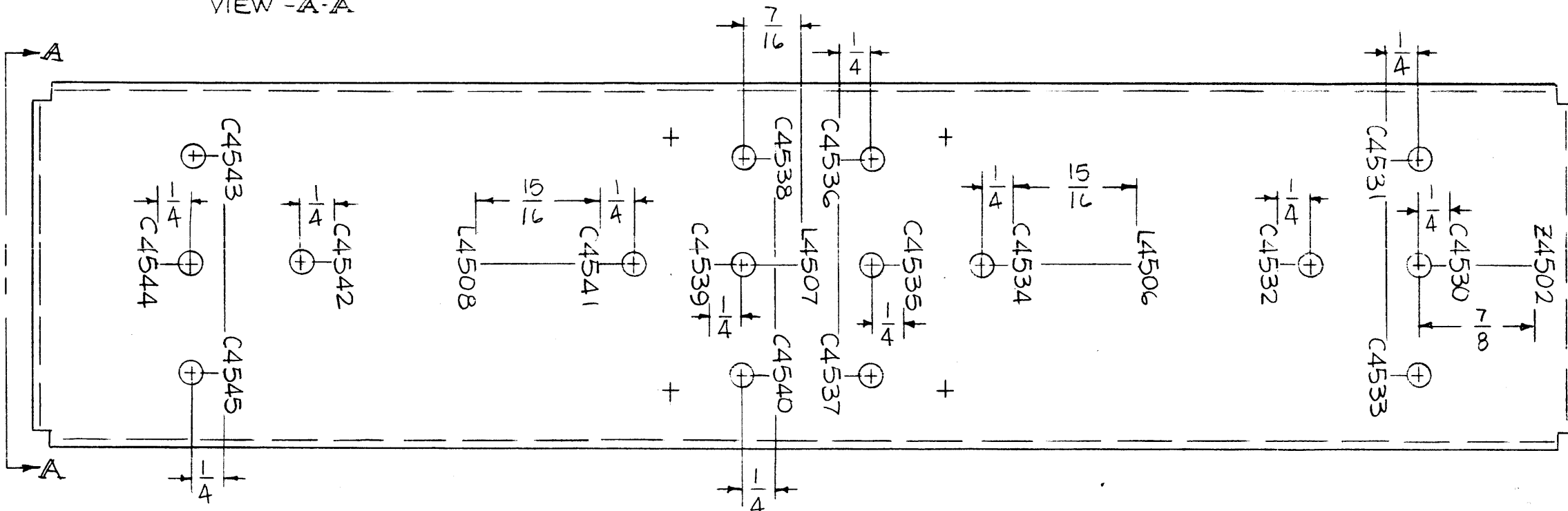
REVISIONS

SYM	DESCRIPTION	DATE	E.M.N. NO.	DRAFT	CHKD	APPD
X	EXP. RELEASE	10-10-66	X			G2B
Ø	ORIGINAL RELEASE	59-73		CS		



VIEW -A-A

MARK TMC P/N  
1/8" HIGH GOTHIC  
W/LATEST REV.  
LETTER.



MARKING PROCESS: AS PER TMC SPECIFICATION S-727.  
LETTERING: 1/8 HIGH BLACK GOTHIC, LOCATED AS SHOWN.

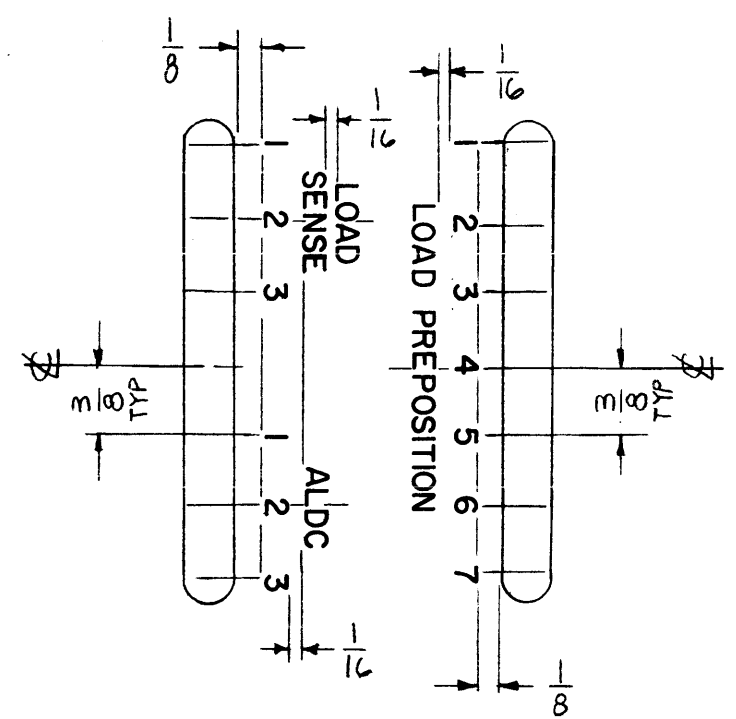
REF: MS 5064

REQ'D.	ITEM	PART NUMBER	DESCRIPTION	SYMBOL
F. BUDETTI LIST OF MATERIAL				
MATERIAL			THE TECHNICAL MATERIEL CORP. MAMARONECK, NEW YORK	
FINISH			TITLE MARKING, BOX, FILTER AS PER TMC SPEC. S-727	
UNLESS OTHERWISE SPECIFIED DIMENSIONS ARE IN INCHES AND INCLUDE CHEMICALLY APPLIED OR PLATED FINISHES			DRAWN: <i>[Signature]</i> DATE: 9-30-66 CHECKED: <i>[Signature]</i> DATE:	FINAL APPROVAL: <i>[Signature]</i> DATE: 5/9/23
DECIMALS .X ± .05 .XX ± .01 .XXX ± .005	TOLERANCES	FRACTIONS ± 1/64 ANGLES ± 0° 30'	ELECT. DES. DATE	MECH. DES. DATE
THE CONTENTS OF THIS DRAWING ARE THE EXCLUSIVE PROPERTY OF THE TECHNICAL MATERIEL CORP. ITS UNAUTHORIZED USE OR REPRODUCTION IN WHOLE OR IN PART IS STRICTLY FORBIDDEN.			SHEET: LD1504 REV. LTR.: Ø	

NOTES

LD1505

REVISIONS					
SYM	DESCRIPTION	DATE	E.M.N. NO.	DRAFT	CHKD APPD
X	EXP. RELEASE	10-26-66	X	<i>[Signature]</i>	aa <i>[Signature]</i>
Ø	ORIGINAL RELEASE FOR PRODUCTION	12.7.66	<i>[Signature]</i>	WTD	



MARK TMC P/N (LD1505-)  
 1/8" HIGH GOTHIC W/LATEST  
 REV. LETTER,  
 (ON OTHER SIDE)

**MARKING PROCESS:** AS PER TMC SPECIFICATION S-727.  
**LETTERING:** 1/8 HIGH BLACK GOTHIC, LOCATED AS SHOWN.

REF: MS 5035-

1	SWCA-3K	A526A
Q'TY./UNIT	MODEL USED ON	ASS'Y. NO.
SCALE	CODE	
1:1	A	

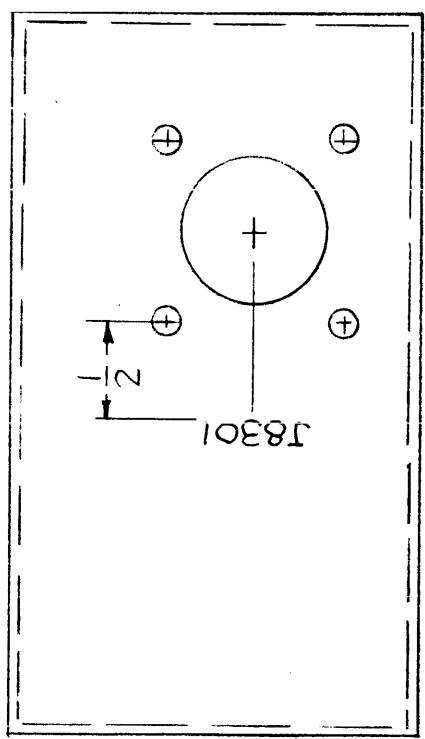
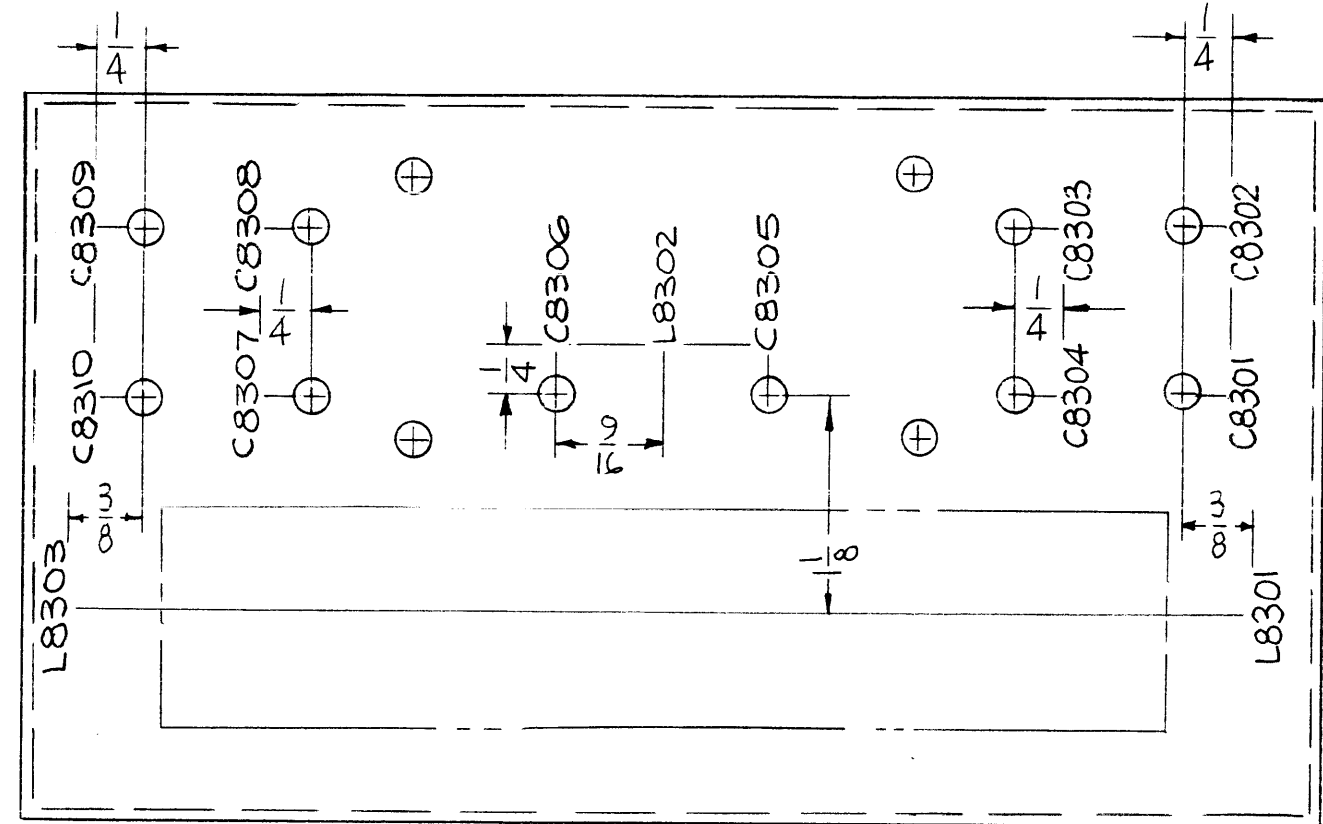
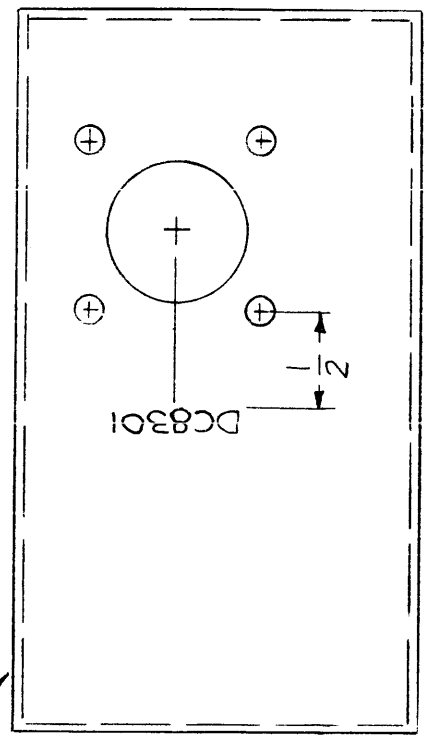
**NOTES**

THE CONTENTS OF THIS DRAWING ARE THE EXCLUSIVE PROPERTY OF THE TECHNICAL MATERIEL CORP. ITS UNAUTHORIZED USE OR REPRODUCTION IN WHOLE OR IN PART IS STRICTLY FORBIDDEN.

REQ'D.	ITEM	PART NUMBER	DESCRIPTION	SYMBOL
F. BUDETTI LIST OF MATERIAL				
MATERIAL		THE TECHNICAL MATERIEL CORP. MAMARONECK, NEW YORK		
FINISH		TITLE MARKING, COVER BOTTOM AS PER TMC SPEC, S-727		
UNLESS OTHERWISE SPECIFIED DIMENSIONS ARE IN INCHES AND INCLUDE CHEMICALLY APPLIED OR PLATED FINISHES		DRAWN <i>[Signature]</i>	DATE 10-26-66	FINAL APPROVAL <i>[Signature]</i>
DECIMALS .X ± .05 .XX ± .01 .XXX ± .005		CHECKED <i>[Signature]</i>	DATE	DATE 12/1/66
FRACTIONS ± 1/64 ANGLES ± 0° 30'		ELECT. DES.	DATE	LD1505
TOLERANCES		MECH. DES.	DATE	Ø
		M/L <i>[Signature]</i>	DATE 12/6/66	REV. LTR.

LD1508

REVISIONS						
SYM	DESCRIPTION	DATE	E.M.N. NO.	DRAFT	CHKD	APPD
X	EXP. RELEASE	11-7-66				
Ø	ORIGINAL RELEASE FOR PRODUCTION	1-10-67	Ø	RME		



MARK TMC P/N (LD1508-)  
1/8 HIGH GOTHIC W/LATEST  
REV. LETTER, ON LIP

MARKING PROCESS: AS PER TMC SPECIFICATION S-727.

LETTERING: 1/8 HIGH BLACK GOTHIC, LOCATED AS SHOWN

**NOTES**

Q'TY./UNIT		MODEL USED ON		ASS'Y. NO.
SCALE		CODE		
		A		
THE CONTENTS OF THIS DRAWING ARE THE EXCLUSIVE PROPERTY OF THE TECHNICAL MATERIEL CORP. ITS UNAUTHORIZED USE OR REPRODUCTION IN WHOLE OR IN PART IS STRICTLY FORBIDDEN.				

REF: M55014-

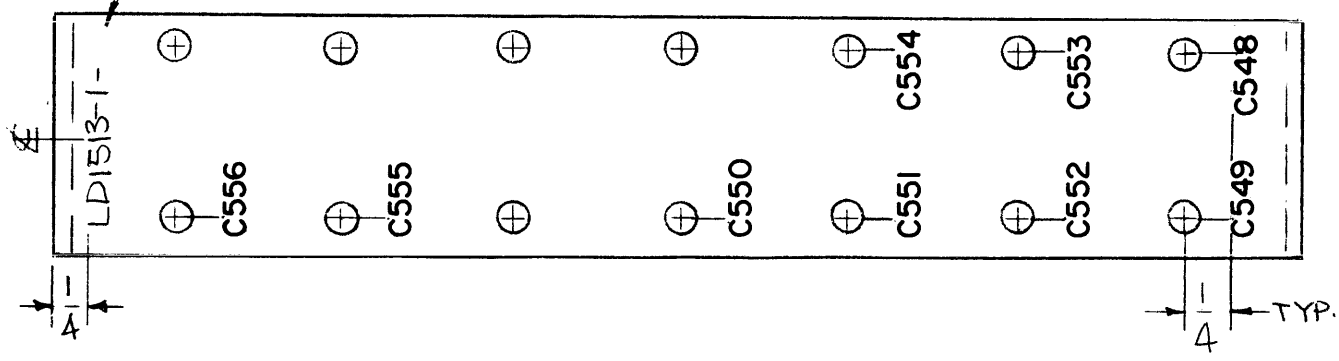
REQ'D.	ITEM	PART NUMBER	DESCRIPTION	SYMBOL
F. BUDETTI LIST OF MATERIAL				
MATERIAL			THE TECHNICAL MATERIEL CORP. MAMARONECK, NEW YORK	
FINISH			TITLE MARKING, CHASSIS FILTER AS PER TMC SPEC. S-727	
UNLESS OTHERWISE SPECIFIED DIMENSIONS ARE IN INCHES AND INCLUDE CHEMICALLY APPLIED OR PLATED FINISHES			DRAWN <i>[Signature]</i> DATE 11-7-66 CHECKED DATE ELECT. DES. DATE MECH. DES. <i>[Signature]</i> DATE	FINAL APPROVAL <i>[Signature]</i> DATE 1/10/67 SHEET LD1508 REV. LTR. Ø
DECIMALS		FRACTIONS		
.X ± .05		± 1/64		
.XX ± .01		ANGLES		
.XXX ± .005		± 0° 30'		
TOLERANCES				
M11 <i>[Signature]</i>			1/10/67	

LD1513

REVISIONS

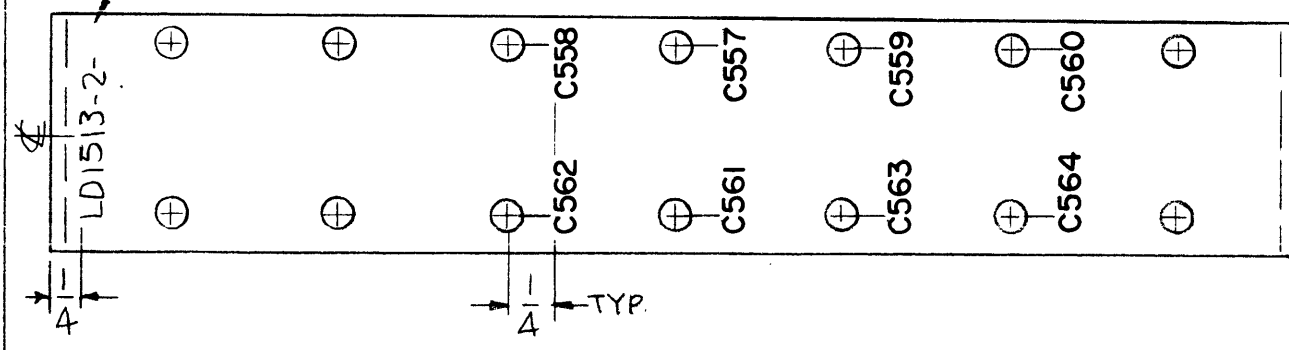
SYM	DESCRIPTION	DATE	E.M.N. NO.	DRAFT	CHKD	APPD
X	EXP. RELEASE	12-20-66				
Ø	EXP. RELEASE FOR PRODUCTION	12-28-66		UFD		

MARK TMC PART NO  
1/8 HIGH GOTHIC  
W/LATEST REV. LETTER.



LD1513-1

MARK TMC PART NO  
1/8 HIGH GOTHIC  
W/LATEST REV. LETTER.



LD1513-2

REF. MS 4879

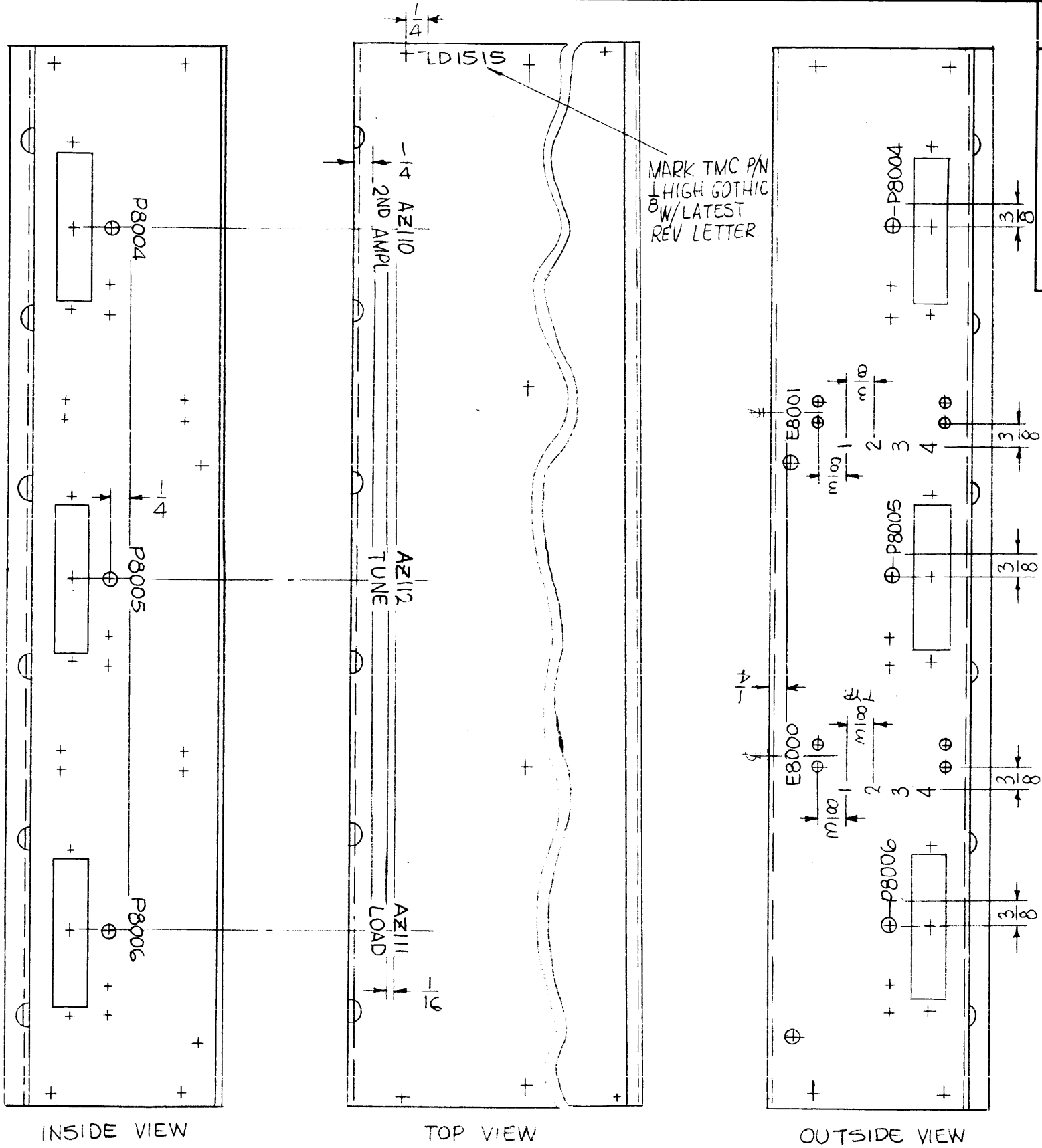
MARKING PROCESS: AS PER TMC SPECIFICATION S-727.  
LETTERING: 1/8 HIGH BLACK GOTHIC, LOCATED AS SHOWN.

1 EA	TSTE-10K	AF105
Q'TY./UNIT	MODEL USED ON	ASS'Y. NO.
SCALE 1:1	CODE A	
THE CONTENTS OF THIS DRAWING ARE THE EXCLUSIVE PROPERTY OF THE TECHNICAL MATERIEL CORP. ITS UNAUTHORIZED USE OR REPRODUCTION IN WHOLE OR IN PART IS STRICTLY FORBIDDEN.		

REQ'D.	ITEM	PART NUMBER	DESCRIPTION	SYMBOL
F. BUDETTI LIST OF MATERIAL				
MATERIAL			THE TECHNICAL MATERIEL CORP. MAMARONECK, NEW YORK	
FINISH			TITLE MARKING BRKT MTG. COMPONENTS AS PER TMC SPEC. S-727	
UNLESS OTHERWISE SPECIFIED DIMENSIONS ARE IN INCHES AND INCLUDE CHEMICALLY APPLIED OR PLATED FINISHES			DRAWN: <i>[Signature]</i> CHECKED: <i>[Signature]</i> ELECT. DES.: <i>[Signature]</i> MECH. DES.: <i>[Signature]</i>	DATE: 12-20-66 DATE: 12-28-66 DATE: <i>[Signature]</i> DATE: <i>[Signature]</i>
DECIMALS .X ± .05 .XX ± .01 .XXX ± .005	TOLERANCES	FRACTI NS ± 1/64 ANGLES ± 0° 30'	SHEET: LD1513 REV. LTR.: Ø	

NOTES





LD1515

REVISIONS					
SYM	DESCRIPTION	DATE	E.M.N. NO.	DRAFT	CHKD APPD
X	EXP. RELEASE	12-27-66			
Ø	ORIGINAL RELEASE FOR PRODUCTION	1/11/67		Ø	CV

REF: MS 6050

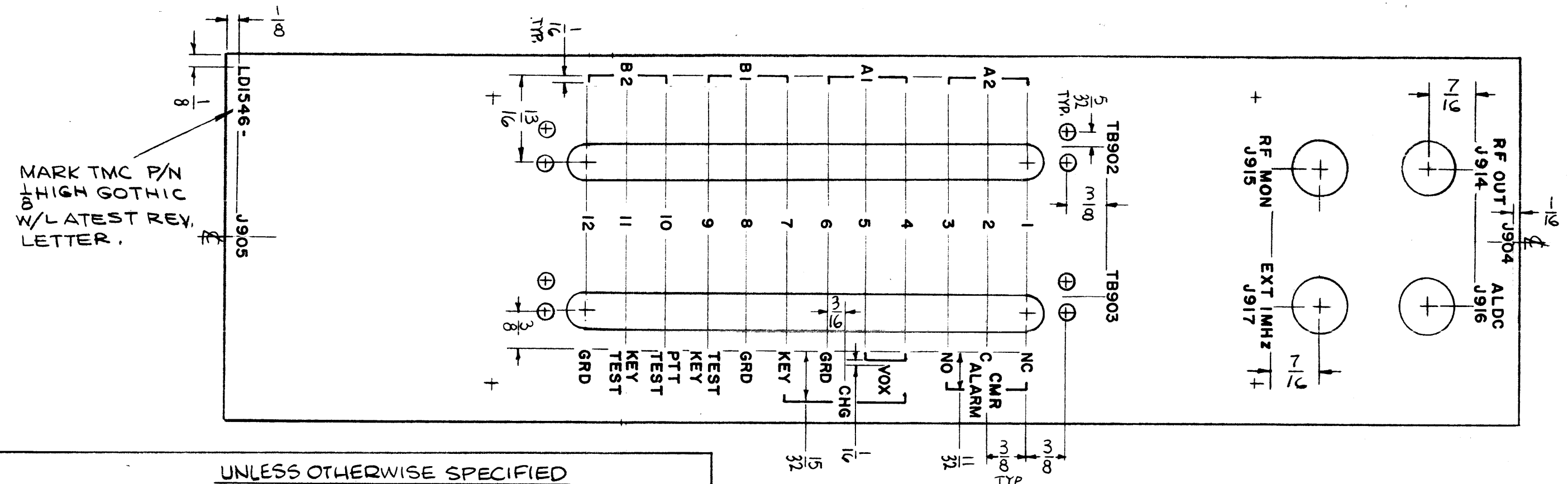
REQ'D.	ITEM	PART NUMBER	DESCRIPTION	SYMBOL
F. BUDETTI LIST OF MATERIAL				
MATERIAL			THE TECHNICAL MATERIEL CORP. MAMARONECK, NEW YORK	
FINISH			TITLE MARKING CHASSIS SERVO AMPL. AS PER TMC SPEC. S727	
UNLESS OTHERWISE SPECIFIED DIMENSIONS ARE IN INCHES AND INCLUDE CHEMICALLY APPLIED OR PLATED FINISHES			DRAWN <i>[Signature]</i>	DATE 12-27-66
DECIMALS .X ± .05 .XX ± .01 .XXX ± .005			CHECKED <i>[Signature]</i>	DATE
FRACTIONS ± 1/64 ANGLES ± 0° 30'			ELECT. DES.	DATE
TOLERANCES			MECH. DES.	DATE 1/13-67
			DATE 1/13-67	REV. LTR. Ø

MARKING PROCESS: AS PER TMC SPECIFICATION S-727.  
 LETTERING: 1/8 HIGH BLACK GOTHIC, LOCATED AS SHOWN.

NOTES

1	TCSA-1	AX632
Q'TY./UNIT	MODEL USED ON	ASS'Y. NO.
SCALE 1:2	CODE A	
THE CONTENTS OF THIS DRAWING ARE THE EXCLUSIVE PROPERTY OF THE TECHNICAL MATERIEL CORP. ITS UNAUTHORIZED USE OR REPRODUCTION IN WHOLE OR IN PART IS STRICTLY FORBIDDEN.		

REVISIONS						
ZONE	LTR	DESCRIPTION	DATE	E.M.N.NO	DRAFT	CHKD APPD
	X	EXP RELEASE	2-7-67			
	X1	J904 & 905 ADDED	3-4-67			
	Ø	ORIG RELEASE FOR PROD	4-6-67	Ø	CV	



UNLESS OTHERWISE SPECIFIED  
 1/16 SPACING BETWEEN WORDS.  
 1/16 SPACING BETWEEN LINES & WORDS.

MARKING PROCESS: AS PER TMC SPECIFICATION S-727.

LETTERING: 3/32 HIGH WHITE GOTHIC, LOCATED AS SHOWN.

QTY / UNIT	MODEL USED ON	ASS'Y NO.
1	SBT-1KPA2	AF-108
1	SBT-1KPA1	AF-108

APPLICATION		
S401-451	CODE	S401-
S401-	A	

**NOTICE TO PERSONS RECEIVING THIS DRAWING**  
 THE TECHNICAL MATERIEL CORPORATION claims proprietary right in the material disclosed hereon. This drawing is issued in confidence for engineering information only and may not be reproduced or used to manufacture anything shown hereon without permission from THE TECHNICAL MATERIEL CORPORATION to the user. This drawing is loaned for mutual assistance and is subject to recall at any time.

REF: PX1009

UNLESS OTHERWISE SPECIFIED DIMENSIONS ARE IN INCHES AND INCLUDE CHEMICALLY APPLIED OR PLATED FINISHES

DECIMALS	FRACTIONS
.X ± .05	1/64
.XX ± .01	TOLS. ANGLES
.XXX ± .005	0° - 30'

MATERIAL

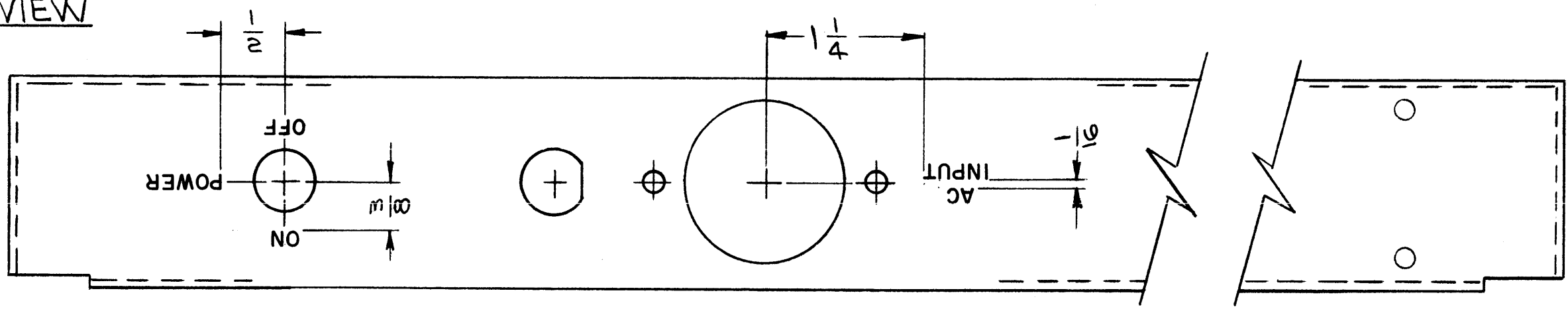
FINISH

REQ'D	ITEM	PART NUMBER	DESCRIPTION	SYM.
		F. BUDETTI	LIST OF MATERIAL	
		THE TECHNICAL MATERIEL CORP.	MAMARONECK, NEW YORK	
		MARKING PATCH PANEL	AS PER TMC SPEC. S727	
		SIZE B	CODE IDENT. NO. 82679	DWG NO. LD1546
			SCALE 1:1	SHEET OF

LD1563 A

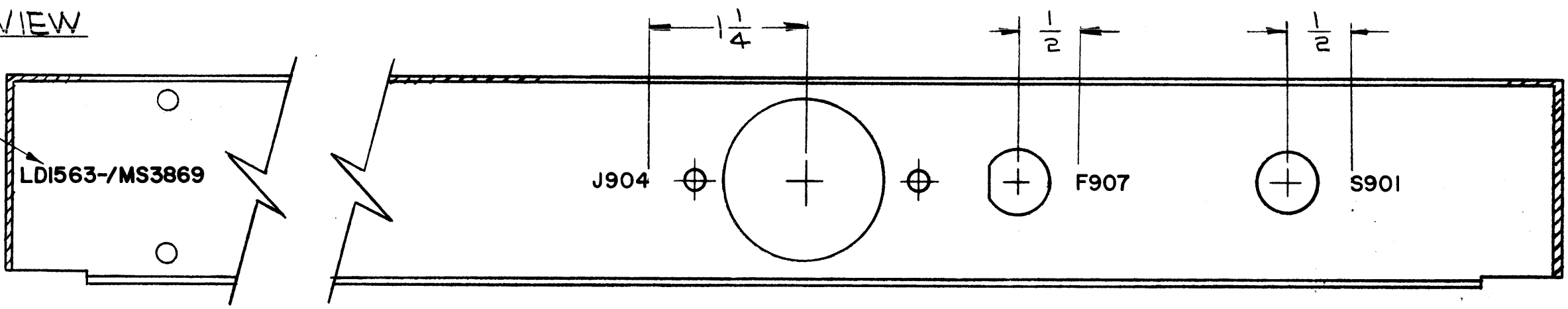
REVISIONS						
SYM	DESCRIPTION	DATE	E.M.N. NO.	DRAFT	CHKD	APFD
X	EXPER. RELEASE	8-10-64	X			
Ø	ORIGINAL RELEASE FOR PRODUCTION	8.20.64	+	WB		
A	ON PICT. 4 HOLES ADD. METAL STAMP NOTE RELOC.	9.28.64	12462	9.P.	@	9.24

EXTERIOR VIEW  
-TOP-



INTERIOR VIEW  
-TOP-

MARK TMC PART No WITH LATEST REVISION LETTERS.



MARKING PROCESS: AS PER TMC SPECIFICATION S-727.  
LETTERING: 1/8 HIGH BLACK GOTHIC, LOCATED AS SHOWN.

REF: MS3869 (8)

1	THRA-1	
Q'TY./UNIT	MODEL USED ON	ASS'Y. NO.
SCALE 1:1	CODE A	

THE CONTENTS OF THIS DRAWING ARE THE EXCLUSIVE PROPERTY OF THE TECHNICAL MATERIEL CORP. ITS UNAUTHORIZED USE OR REPRODUCTION IN WHOLE OR IN PART IS STRICTLY FORBIDDEN.

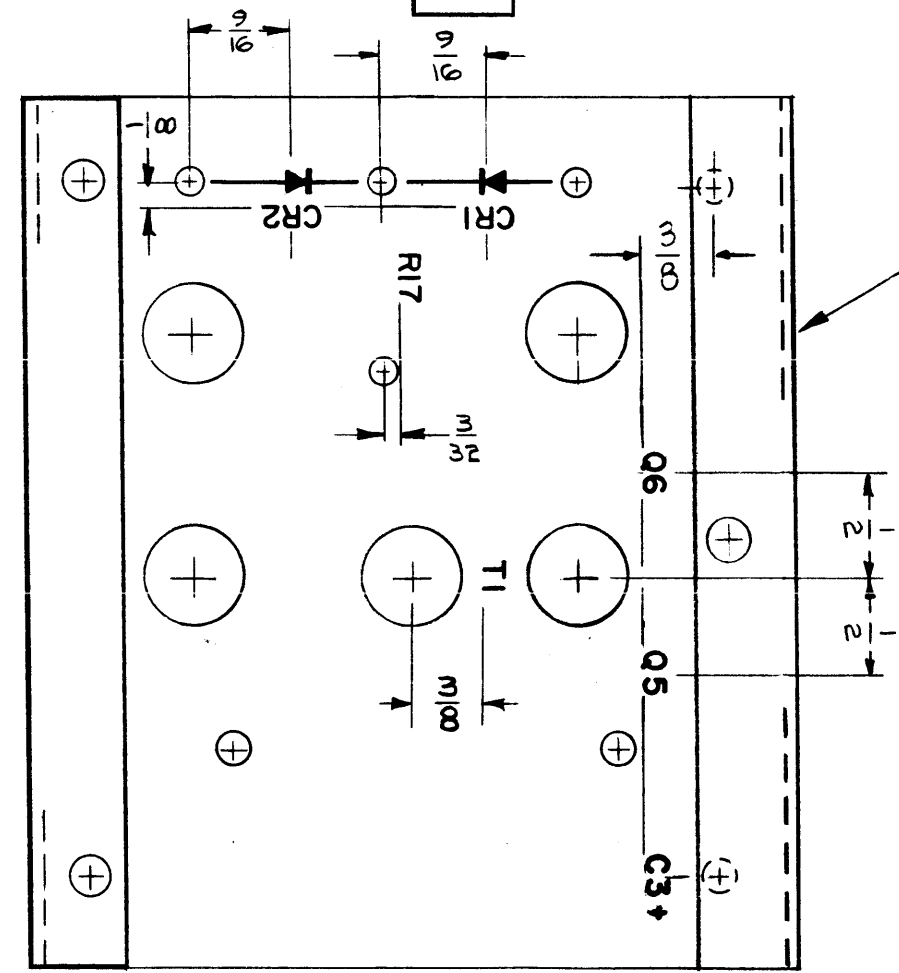
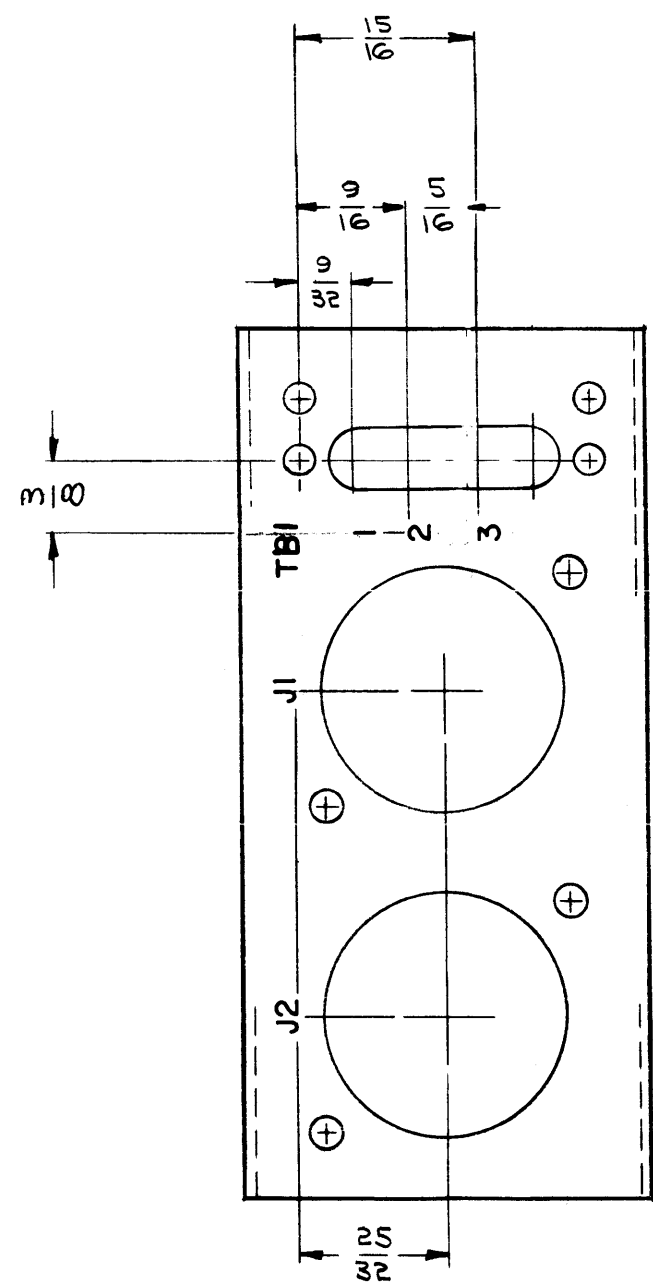
REQ'D.	ITEM	PART NUMBER	DESCRIPTION	SYMBOL
T. DALTONEN LIST OF MATERIAL				
MATERIAL			THE TECHNICAL MATERIEL CORP. MAMARONECK, NEW YORK	
FINISH			TITLE MARKING, CHASSIS, MAIN MARKING PROCESS, PER TMC SPEC 5727	
UNLESS OTHERWISE SPECIFIED DIMENSIONS ARE IN INCHES AND INCLUDE CHEMICALLY APPLIED OR PLATED FINISHES			DRAWN: <i>[Signature]</i> DATE: 8-10-64 CHECKED: <i>[Signature]</i> DATE: 8/21/64 ELECT. DES: <i>[Signature]</i> DATE: 8/21/64 MECH. DES: <i>[Signature]</i> DATE: 8/21/64	FINAL APPROVAL: <i>[Signature]</i> DATE: LD1563 A
DECIMALS	TOLERANCES		FRACTIONS	REV. LTR.
.X ± .05 .XX ± .01 .XXX ± .05			± 1/64 ANGLES ± 0° 30'	

NOTES

LD1567 A

REVISIONS

SYM	DESCRIPTION	DATE	E.M.N. NO.	DRAFT	CHKD	APPD
X	EXPER RELEASE	7-21-64	X			
X <sub>1</sub>	LIP ADDED TO ONE SIDE, CR2 POLARITY REVERSED LETTERING Q5, Q6 & T1 RELOCATED	12-24-64	X <sub>1</sub>			
Ø	ORIGINAL RELEASE FOR PRODUCTION	1-6-65	Ø			
A	C3+ RELOCATED, TBI ADDED, GND SYM. DELE.	6/1/65	14-153			



MARK TMC PART NO. 1/8 HIGH BLACK GOTHIC, WITH LATEST REVISION LETTERS. (LD1567- /MS3919-)

REF: MS3919

~UNLESS OTHERWISE SPECIFIED~  
**MARKING PROCESS: AS PER TMC SPECIFICATION S-727.**  
**LETTERING: 1/8 HIGH BLACK GOTHIC, LOCATED AS SHOWN.**

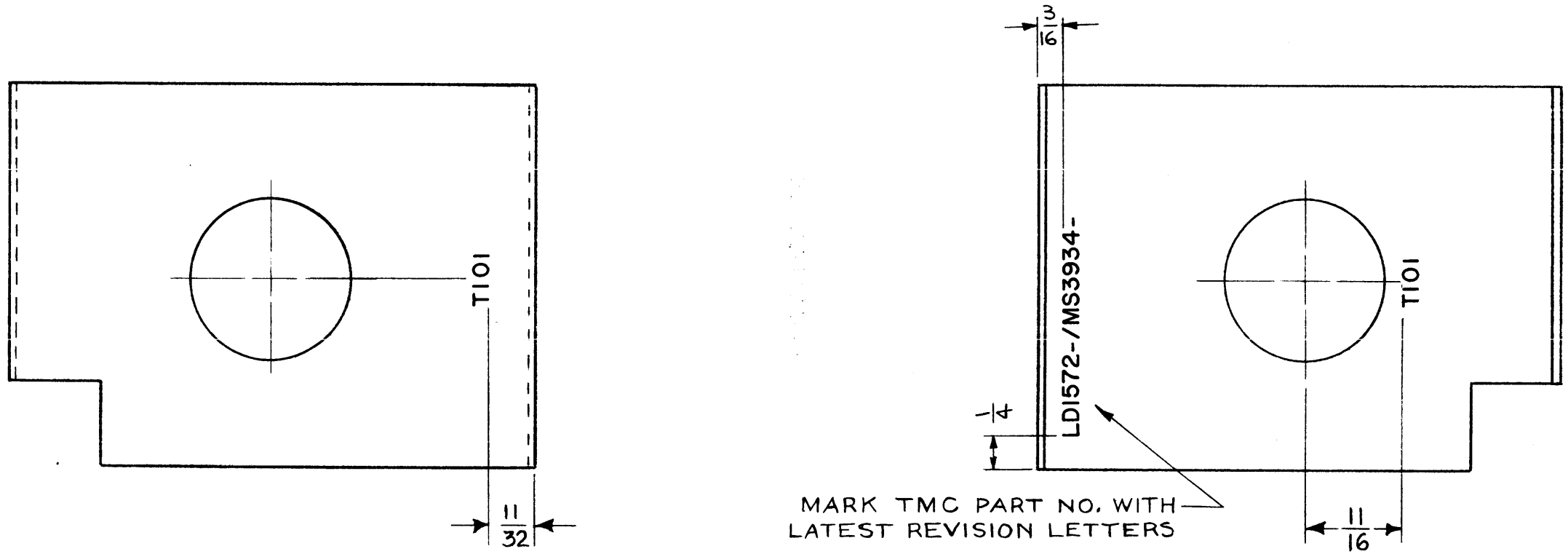
1	AZ102	
Q'TY./UNIT	MODEL USED ON	ASS'Y. NO.
SCALE 1:1	CODE A	
THE CONTENTS OF THIS DRAWING ARE THE EXCLUSIVE PROPERTY OF THE TECHNICAL MATERIEL CORP. ITS UNAUTHORIZED USE OR REPRODUCTION IN WHOLE OR IN PART IS STRICTLY FORBIDDEN.		

REQ'D.	ITEM	PART NUMBER	DESCRIPTION	SYMBOL
R. HAY LIST OF MATERIAL				
MATERIAL			THE TECHNICAL MATERIEL CORP. MAMARONECK, NEW YORK	
FINISH			TITLE MARKING, CHASSIS, MAIN MARKING PROCESS: PER TMC SPEC S-727	
UNLESS OTHERWISE SPECIFIED DIMENSIONS ARE IN INCHES AND INCLUDE CHEMICALLY APPLIED OR PLATED FINISHES		DRAWN <i>R. HAY</i>	DATE 7-21-64	FINAL APPROVAL <i>R. HAY</i>
DECIMALS .X ± .05 .XX ± .01 .XXX ± .005		CHECKED <i>Ø</i>	DATE 1-5-65	
FRACTIONS ± 1/64 ANGLES ± 0° 30'		ELECT. DES.	DATE	
TOLERANCES		MECH. DES.	DATE	
			DATE 11/2/65	
			SHEET	
			LD1567	A
				REV. LTR.

NOTES

LD1572

REVISIONS					
SYM	DESCRIPTION	DATE	E.M.N. NO.	DRAFT	CHK
X	EXPERIMENTAL RELEASE	8-5-64		NP	
Ø	ORIGINAL RELEASE FOR PRODUCTION	8-31-64	Ø	LL	



MARK TMC PART NO. WITH LATEST REVISION LETTERS

REF: MS3934

MARKING PROCESS: AS PER TMC SPECIFICATION S-727.  
 LETTERING: 1/8 HIGH BLACK GOTHIC, LOCATED AS SHOWN.

1	LFCA-1	
Q'TY./UNIT	MODEL USED ON	ASS'Y. NO.
SCALE 1:1	CODE A	

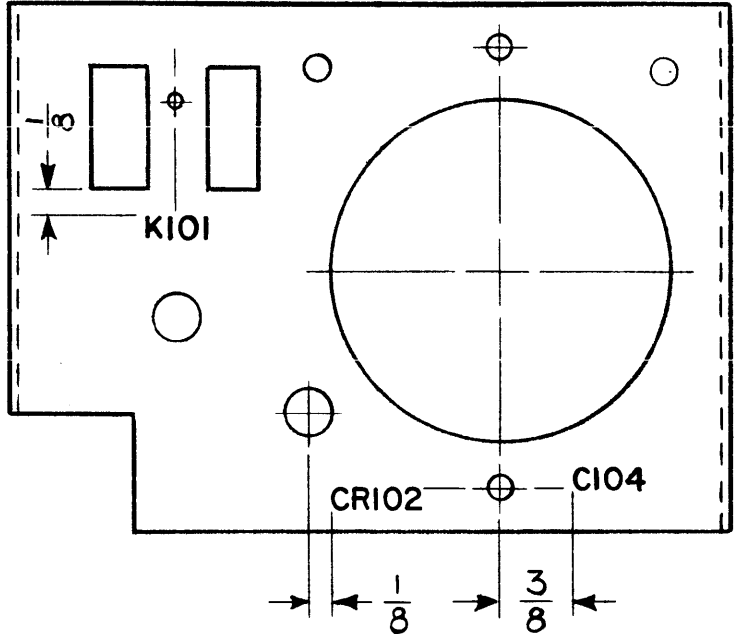
REQ'D.	ITEM	PART NUMBER	DESCRIPTION	SYMBOL
M. GELLMAN LIST OF MATERIAL				
MATERIAL			THE TECHNICAL MATERIEL CORP. MAMARONECK, NEW YORK	
FINISH			TITLE MARKING, PANEL, TRANSFORMER	
UNLESS OTHERWISE SPECIFIED DIMENSIONS ARE IN INCHES AND INCLUDE CHEMICALLY APPLIED OR PLATED FINISHES				
DRAWN <i>N. Peter</i>		DATE 8-5-64	FINAL APPROVAL <i>[Signature]</i>	
CHECKED <i>[Signature]</i>		DATE 9-1-64		
ELECT. DES. <i>[Signature]</i>		DATE		
MECH. DES.		DATE		
DECIMALS .X ± .05 .XX ± .01 .XXX ± .005			TOLERANCES ± 1/64 ANGLES ± 0° 30'	
SHEET			LD1572 Ø	
REV. LTR.				

NOTES

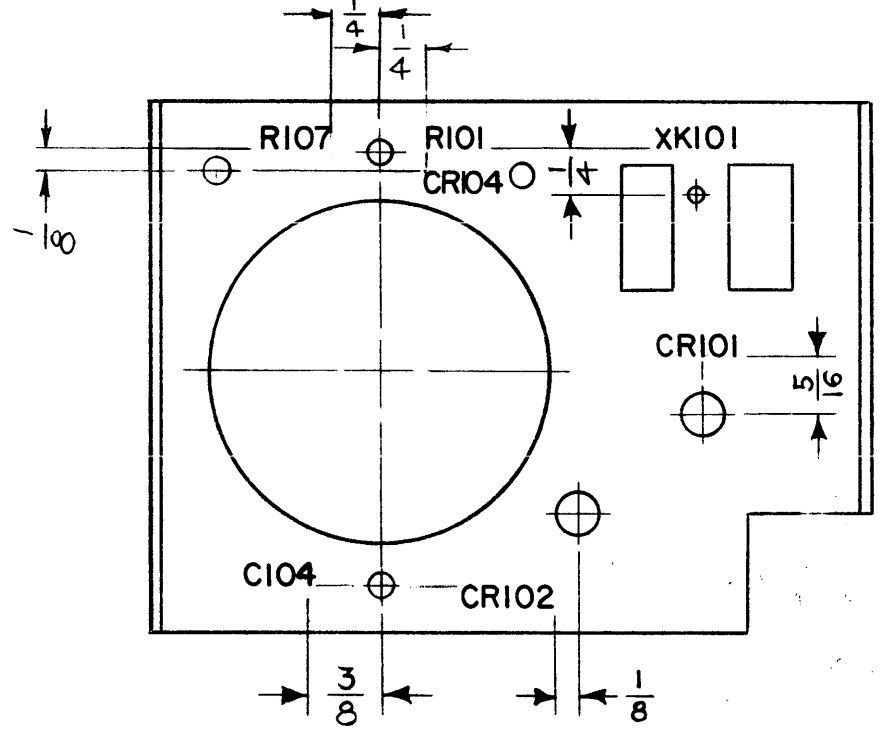
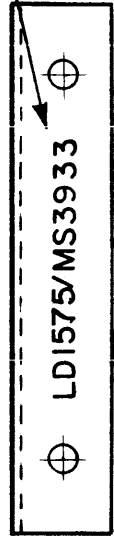
THE CONTENTS OF THIS DRAWING ARE THE EXCLUSIVE PROPERTY OF THE TECHNICAL MATERIEL CORP. ITS UNAUTHORIZED USE OR REPRODUCTION IN WHOLE OR IN PART IS STRICTLY FORBIDDEN.

LD1575 B

REVISIONS					
SYM	DESCRIPTION	DATE	E.M.N. NO.	DRAFT	CHKD APPD
X	EXPERIMENTAL RELEASE	8-5-64		NP	
Ø	ORIGINAL RELEASE FOR PRODUCTION	8-31-64	Ø	JK	
A	C104 WAS C101 (2 PLACES)	10-26-64	11774	WB	JK
B	R107 & CR104 ADDED	3-22-65	13609	JK	JK



MARK TMC PART NO. WITH LATEST REVISION LETTER



MARKING PROCESS: AS PER TMC SPECIFICATION S-727.  
 LETTERING: 1/8 HIGH BLACK GOTHIC, LOCATED AS SHOWN.

REF: MS3933

REQ'D.	ITEM	PART NUMBER	DESCRIPTION	SYMBOL
M. GELLMAN LIST OF MATERIAL				
MATERIAL		THE TECHNICAL MATERIEL CORP. MAMARONECK, NEW YORK		
FINISH		TITLE MARKING, PANEL, RELAY		
UNLESS OTHERWISE SPECIFIED DIMENSIONS ARE IN INCHES AND INCLUDE CHEMICALLY APPLIED OR PLATED FINISHES		DRAWN: <i>M. Peter</i> CHECKED: <i>JD @</i> ELECT. DES.: <i>JD</i> MECH. DES.:	DATE: 8-5-64 DATE: 9-1-64 DATE:	FINAL APPROVAL: <i>JK</i> DATE:
DECIMALS .X ± .05 .XX ± .01 .XXX ± .005	TOLERANCES	FRACTIONS ± 1/64 ANGLES ± 0° 30'	SHEET: LD1575 B REV. LTR.:	

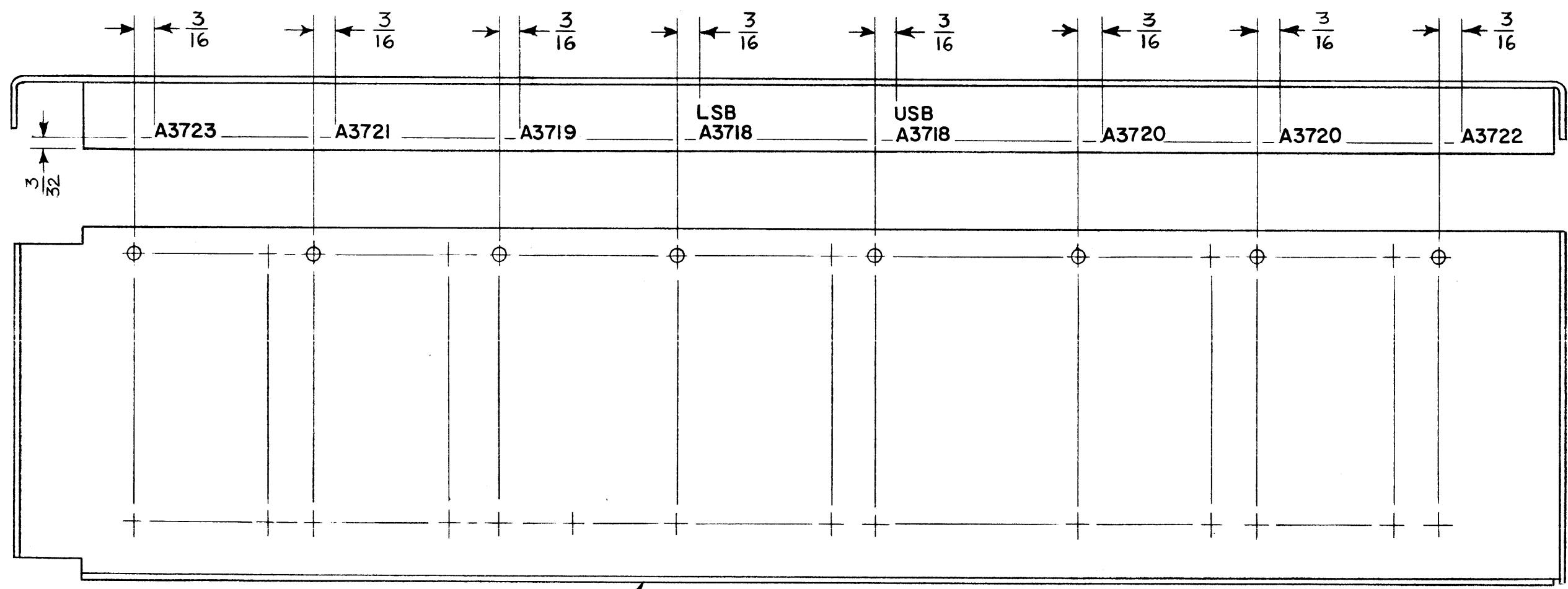
1	LFCA-1	
Q'TY./UNIT	MODEL USED ON	ASS'Y. NO.
SCALE: 1:1	CODE: A	

NOTES

THE CONTENTS OF THIS DRAWING ARE THE EXCLUSIVE PROPERTY OF THE TECHNICAL MATERIEL CORP. ITS UNAUTHORIZED USE OR REPRODUCTION IN WHOLE OR IN PART IS STRICTLY FORBIDDEN.

LD1576 Ø

REVISIONS						
SYM	DESCRIPTION	DATE	E.M.N. NO.	DRAFT	CHKD	APPD
X	EXPERIMENTAL RELEASE	8-5-64		NP		
Ø	ORIGINAL RELEASE FOR PRODUCTION	8-31-64	Ø	HL		



MARKING PROCESS: AS PER TMC SPECIFICATION S-727.  
 LETTERING: 1/8 HIGH BLACK GOTHIC, LOCATED AS SHOWN.

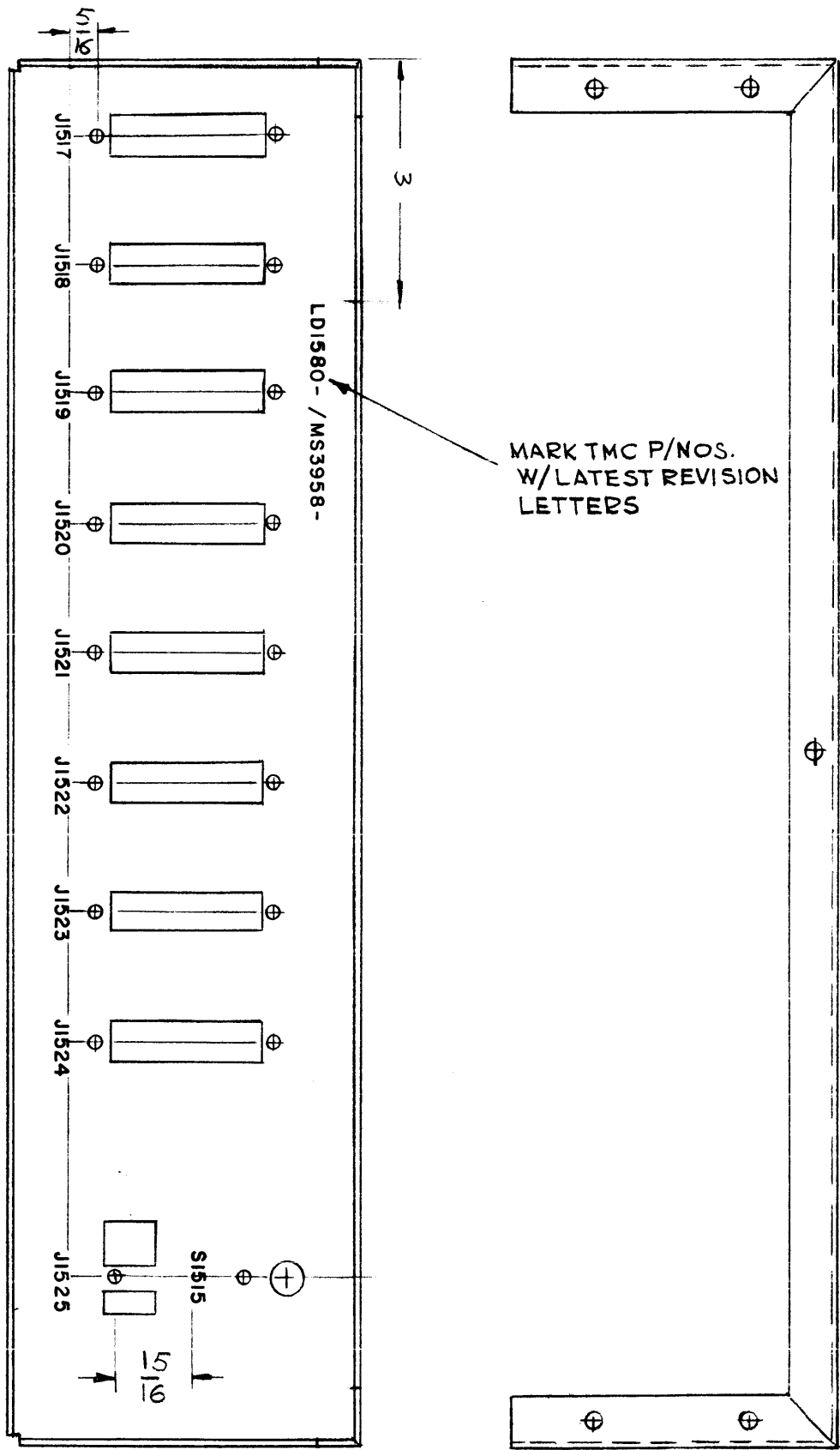
MARK TMC P/N  
 LD1576/MS3929  
 WITH LATEST REVISION  
 LETTER

REF: MS3929

1	LFCA-1	
Q'TY./UNIT	MODEL USED ON	ASS'Y. NO.
SCALE 1:1	CODE A	
THE CONTENTS OF THIS DRAWING ARE THE EXCLUSIVE PROPERTY OF THE TECHNICAL MATERIEL CORP. ITS UNAUTHORIZED USE OR REPRODUCTION IN WHOLE OR IN PART IS STRICTLY FORBIDDEN.		

REQ'D.	ITEM	PART NUMBER	DESCRIPTION	SYMBOL
	M. GELLMAN		LIST OF MATERIAL	
MATERIAL		THE TECHNICAL MATERIEL CORP. MAMARONECK, NEW YORK		
FINISH		TITLE MARKING, SUPPORT, CARD, REAR		
UNLESS OTHERWISE SPECIFIED DIMENSIONS ARE IN INCHES AND INCLUDE CHEMICALLY APPLIED OR PLATED FINISHES		DRAWN <i>N. Peters</i>	DATE 8-5-64	FINAL APPROVAL
		CHECKED <i>WA</i>	DATE 8-28-64	
		ELECT. DES.	DATE	
		MECH. DES.	DATE	
DECIMALS .X ± .05 .XX ± .01 .XXX ± .005		TOLERANCES		
		FRACTIONS ± 1/64 ANGLES ± 0° 30'		
			LD1576	Ø
			SHEET	REV. LTR.

NOTES



MARK TMC P/NOS.  
W/LATEST REVISION  
LETTERS

LD1580

REVISIONS						
SYM	DESCRIPTION	DATE	E.M.N. NO.	DRAFT	CHKD	APFD
X	EXPERIMENTAL RELEASE	8-13-64	#	G.D.L.		
Ø	ORIGINAL RELEASE FOR PRODUCTION	8-27-64	#	G.D.L.		

MARKING PROCESS: AS PER TMC SPECIFICATION S-727.

LETTERING: 1/8 HIGH BLACK GOTHIC, LOCATED AS SHOWN.

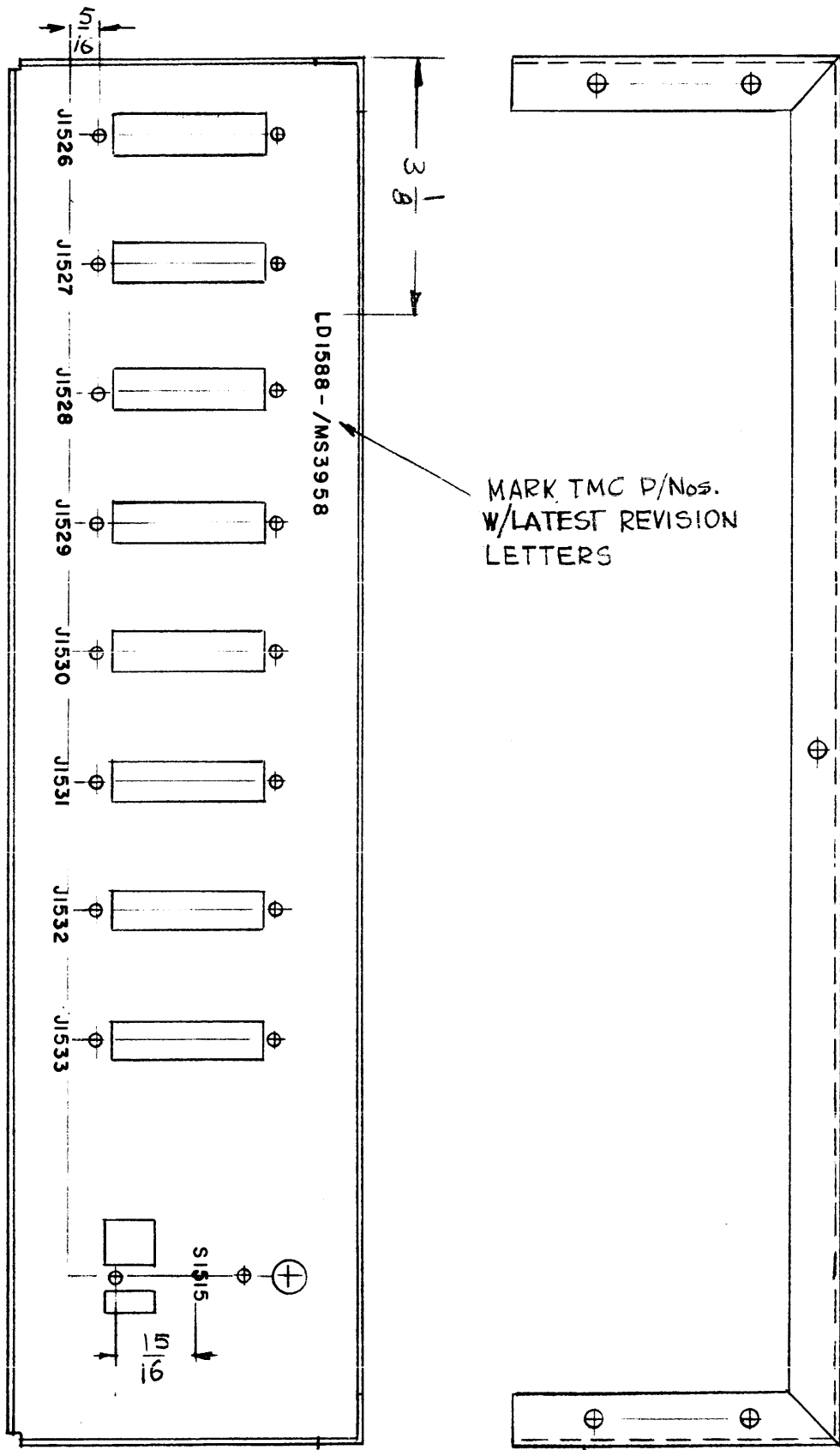
REF. MS 3958

REQ'D.	ITEM	PART NUMBER	DESCRIPTION	SYMBOL
LIST OF MATERIAL				
MATERIAL		THE TECHNICAL MATERIEL CORP. MAMARONECK, NEW YORK		
FINISH		TITLE MARKING, PLATE MTG. CONNECTORS MARKING PROCESS: PER TMC SPEC. 5727		
UNLESS OTHERWISE SPECIFIED DIMENSIONS ARE IN INCHES AND INCLUDE CHEMICALLY APPLIED OR PLATED FINISHES		DRAWN G.D.L.	DATE 8-13-64	FINAL APPROVAL
DECIMALS .X ± .05 .XX ± .01 .XXX ± .005		CHECKED <i>[Signature]</i>	DATE	DATE
FRACTIONS ± 1/64 ANGLES ± 0° 30'		ELECT. DES. <i>[Signature]</i>	DATE	DATE
TOLERANCES		MECH. DES.	DATE	DATE
SHEET				REV. LTR.

1	SMR-1	
Q'TY./UNIT	MODEL USED ON	ASS'Y. NO.
SCALE 1:2	CODE A	
THE CONTENTS OF THIS DRAWING ARE THE EXCLUSIVE PROPERTY OF THE TECHNICAL MATERIEL CORP. ITS UNAUTHORIZED USE OR REPRODUCTION IN WHOLE OR IN PART IS STRICTLY FORBIDDEN.		

NOTES





LD 1588 A

REVISIONS						
SYM	DESCRIPTION	DATE	E.M.N. NO.	DRAFT	CHKD	APPD
X	EXP. RELEASE	8-28-64	#	G.D.L		
<del>Ø</del>	<del>ORIGINAL RELEASE FOR PRODUCTION</del>	<del>9-17-64</del>	<del>Ø</del>	<del>P.F.</del>		
A	ON PICT: J1526 THRU J1533 WERE IN REVERSE ORDER.	1-21-65	13308	P.L	(a)	(b)

MARKING PROCESS: AS PER TMC SPECIFICATION S-727.  
 LETTERING: 1/8 HIGH BLACK GOTHIC, LOCATED AS SHOWN.

REF: MS 3958

NOTES

1	SME-1	
Q'TY./UNIT	MODEL USED ON	ASS'Y. NO.
SCALE 1:2	CODE Δ	
THE CONTENTS OF THIS DRAWING ARE THE EXCLUSIVE PROPERTY OF THE TECHNICAL MATERIEL CORP. ITS UNAUTHORIZED USE OR REPRODUCTION IN WHOLE OR IN PART IS STRICTLY FORBIDDEN.		

REQ'D.	ITEM	PART NUMBER	DESCRIPTION	SYMBOL
T. AALTONEN LIST OF MATERIAL				
MATERIAL		THE TECHNICAL MATERIEL CORP. MAMARONECK, NEW YORK		
FINISH		TITLE MARKING, PLATE MTG. CONNECTORS MARKING PROCESS: PER TMC SPEC. S727		
UNLESS OTHERWISE SPECIFIED DIMENSIONS ARE IN INCHES AND INCLUDE CHEMICALLY APPLIED OR PLATED FINISHES		DRAWN G.D.L 8-28-64	DATE 8-13-64	FINAL APPROVAL DATE
		CHECKED P.F. @	DATE 9-17-64	
		ELECT. DES. T.K.C.	DATE 9/17/64	LD1588
		MECH. DES.	DATE	A
				SHEET
				REV. LTR.