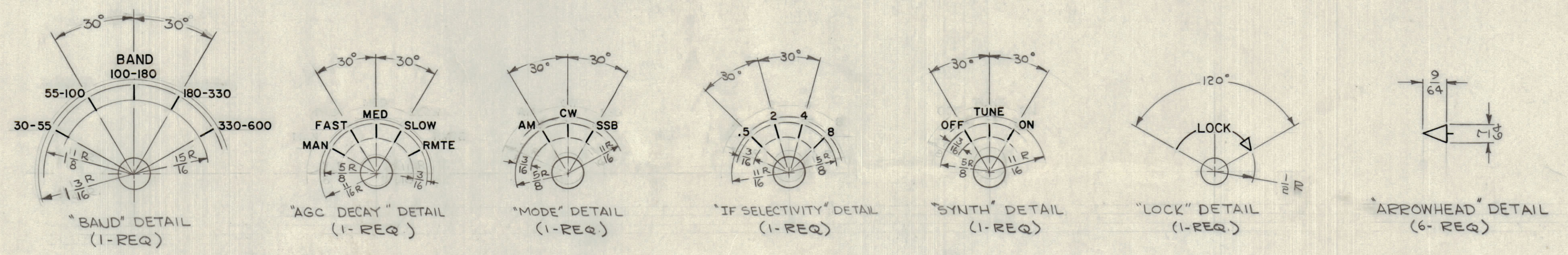
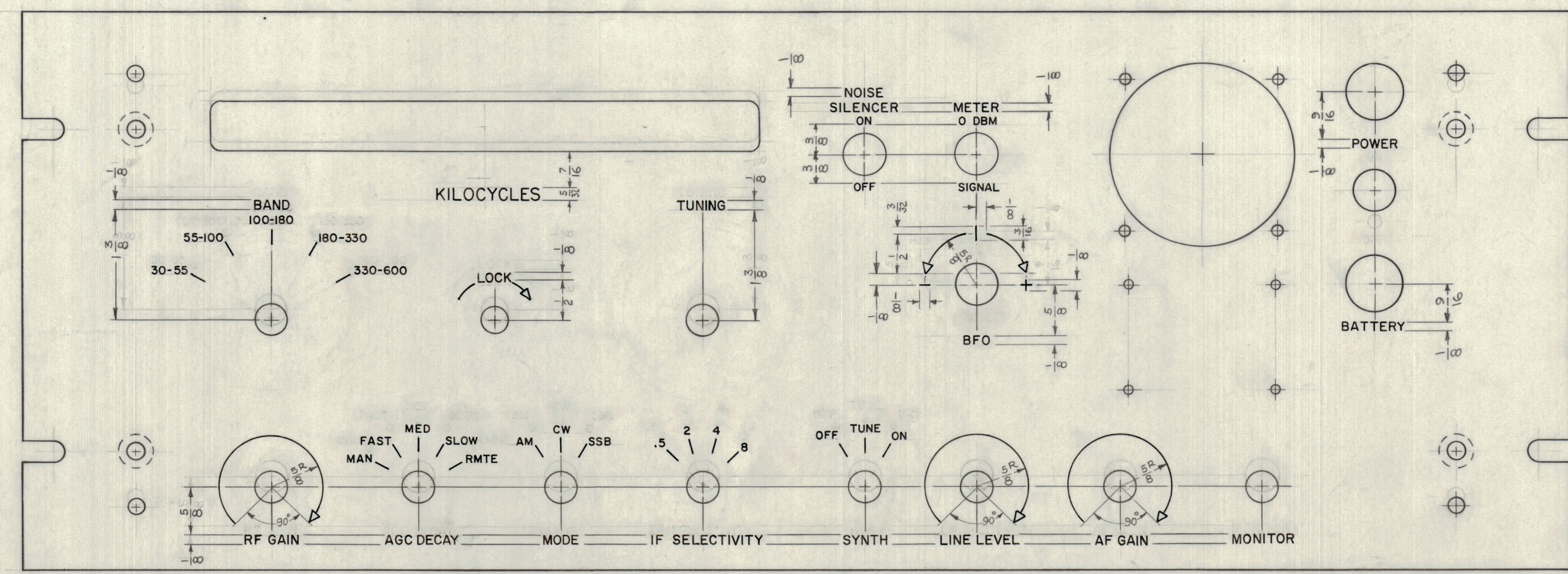


REVISIONS						
#	SYM	DESCRIPTION	DATE	E.M.N. NO.	DRAFT	CHKD
X		EXPER. RELEASE	6-16-63	1		
-	X ₁	ARROWS ADD. ON BFO, RF GAIN, LINE LEVEL, AF GAIN BFO LETTERING RELOCATED	6-24-64			WJB
Ø		ORIGINAL RELEASE FOR PRODUCTION	8.3.64			WJB

HEIGHT OF LETTERS	DEPTH OF STROKE	WIDTH OF STROKE	
3/32	.010	.015	
1/8	.010	.020	
5/32	.010	.020	
LINES	.010	.015	
ARROWHEADS	.010	.015	SEE DETAIL

- ~UNLESS OTHERWISE SPECIFIED~
- 1- ALL ENGRAVING TO BE 3/32 HIGH, WHITE FILLED.
 - 2- ALL LINES TO BE WHITE FILLED.
 - 3- ARROWHEADS TO BE WHITE OUTLINE FILLED.
 - 4- 1/16 SPACING BETWEEN ALL LETTER GROUPS.
 - 5- ALL LETTER GROUPS TO BE CENTERED ON HOLES OR SLOTS.

TOP OF PANEL



REF: MS3960

REQ'D.	ITEM	PART NUMBER	DESCRIPTION	SYMBOL
GELLMAN LIST OF MATERIAL SK3136-LD-2				
MATERIAL		THE TECHNICAL MATERIEL CORP. MAMARONECK, NEW YORK		
FINISH		TITLE MARKING, PANEL, FRONT MARKING PROCESS-ENGRAVING		
UNLESS OTHERWISE SPECIFIED DIMENSIONS ARE IN INCHES AND INCLUDE CHEMICALLY APPLIED OR PLATED FINISHES		DRAWN 6-15-64	DATE 6-15-64	FINAL APPROVAL DATE
DECIMALS XX ± .01 XXX ± .005		FRACTIONS ± 1/64 ANGLES ± 0° 30'		ELECT. DES. DATE MECH. DES. DATE
THE CONTENTS OF THIS DRAWING ARE THE EXCLUSIVE PROPERTY OF THE TECHNICAL MATERIEL CORP. ITS UNAUTHORIZED USE OR REPRODUCTION IN WHOLE OR IN PART IS STRICTLY FORBIDDEN.		LD1581		
SCALE 1:1		CODE A		ASSY. NO.
QTY./UNIT		MODEL USED ON		REV. LTR.

NOTES

LD1581