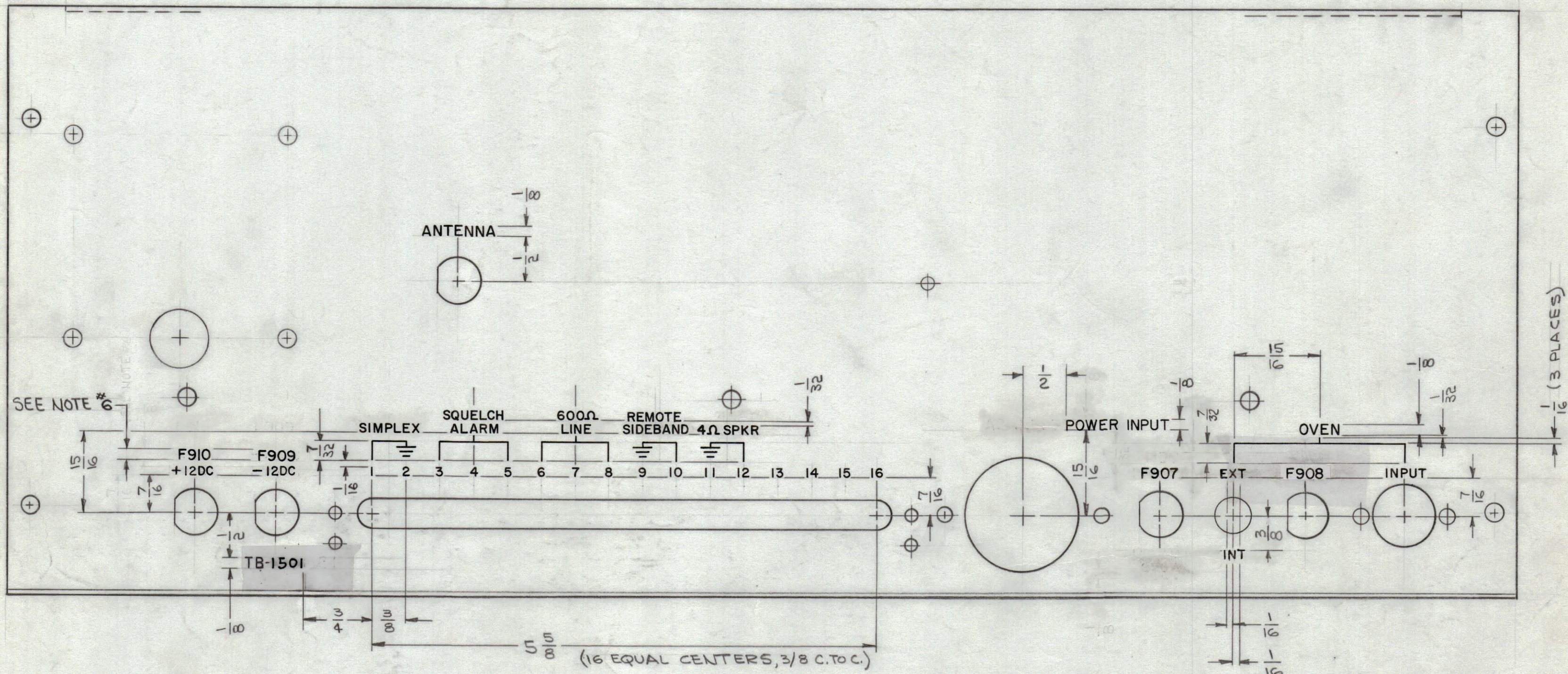


ZONE	SYM	DESCRIPTION	DATE	EMN NO.	DRAFT	CHKD	APPD.	REVISIONS							
F6	B	4 3/16 DIA HOLES & 1 5/8 DIA HOLE ADDED.	10-23-64	12755	7-2	@	TJA	ZONE	SYM	DESCRIPTION	DATE	E.M.N. NO.	DRAFT	CHKD	APPD.
A	C	ON PICT. 1/4 AMR DELE. (2 PL.); F910, F909, F907, F908, ADD; "+12DC" & "-12DC" RELOCATED	11-18-64	12902	7-2	@	TJA	X		EXPER. RELEASE	8-11-64	X			
DG	D	TB-1501 WAS E1501 & 1501 WAS	12-16-64	13098	HLA	@		Ø		ORIGINAL RELEASE FOR PRODUCTION	8-27-64	#	G.D.L.		
								DE, 2, 3	A	115V 1/8AMP, 115V 2AMP & 230V 1/16AMP MARK. DELE	9-30-64	12492	HLB	@	TJA
								E3		POWER INPUT WAS AC INPUT					

EXTERIOR VIEW  
-TOP-



SEE NOTE #6

- ~ UNLESS OTHERWISE SPECIFIED ~
- 1~ ALL LETTERING TO BE 3/32 HIGH, BLACK GOTHIC.
  - 2~ MARKING PROCESS: PER TMC SPEC 5-727.
  - 3~ ALL LINES, SYMBOLS AND LETTERING TO BE LOCATED AS SHOWN.
  - 4~ LINework TO BE .015 WIDE.
  - 5~ 1/16" SPACING BETWEEN ALL LETTER GROUPS.
  - 6~ SYMBOLS F907, 908, 909 & F910 TO BE 1/8 HIGH BLACK GOTHIC.

REF: M53956 (4)

REQ'D.	ITEM	PART NUMBER	DESCRIPTION	SYMBOL
	T. AALTONEN LIST OF MATERIAL			
	MATERIAL		THE TECHNICAL MATERIEL CORP. MAMARONECK, NEW YORK	
	FINISH		TITLE MARKING, PLATE, REAR. MARKING PROCESS: PER TMC SPEC 5727	
	UNLESS OTHERWISE SPECIFIED DIMENSIONS ARE IN INCHES AND INCLUDE CHEMICALLY APPLIED OR PLATED FINISHES		DRAWN DATE	FINAL APPROVAL DATE
	DECIMALS .X ± .05 .XX ± .01 .XXX ± .005		CHECKED DATE	DATE
	FRACTIONS ± 1/64 ANGLES ± 0° 30'		ELECT. DES. DATE	DATE
	TOLERANCES		MECH. DES. DATE	DATE
	SHEET 2 OF 2			REV. LTR.

1	SMR-1	
QTY./UNIT	MODEL USED ON	ASS'Y. NO.
SCALE	CODE	
1:1	A	
THE CONTENTS OF THIS DRAWING ARE THE EXCLUSIVE PROPERTY OF THE TECHNICAL MATERIEL CORP. ITS UNAUTHORIZED USE OR REPRODUCTION IN WHOLE OR IN PART IS STRICTLY FORBIDDEN.		

NOTES

LD1579 D