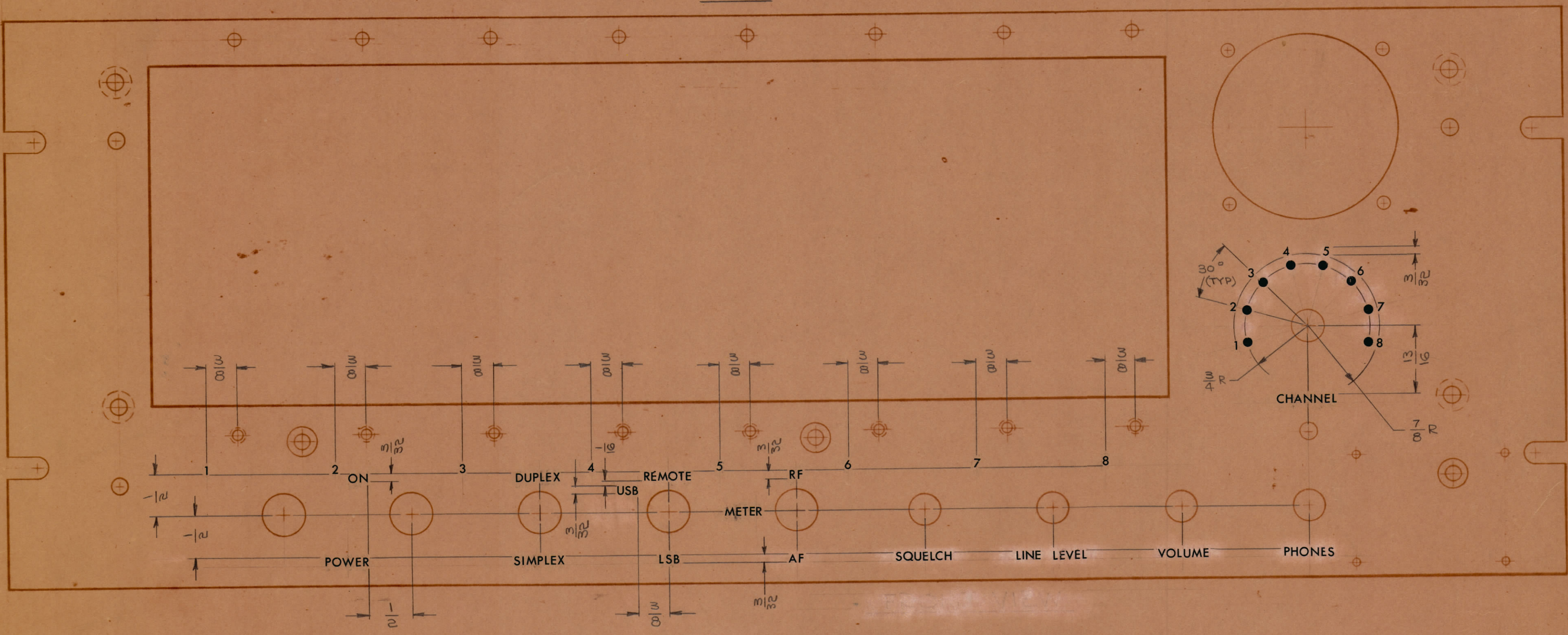


REVISIONS					
ZONE	SYM	DESCRIPTION	DATE	E.M.N. NO.	APPR
#	X	EXPER. RELEASE	2-4-64	X	G.D.L.
Ø		ORIGINAL RELEASE FOR PRODUCTION	8-27-64		

— FRONT VIEW —  
TOP



HEIGHT OF LETTERS	DEPTH OF STROKE	WIDTH OF STROKE
1/8	.010	.020
3/32	.010	.015
DOTS	.010	1/16 DIA.

~ UNLESS OTHERWISE SPECIFIED ~  
 1~ ALL ENGRAVING TO BE 1/8 HIGH, WHITE OUTLINE FILLED.  
 2~ ALL DOTS TO BE WHITE FILLED,  
 3~ ALL LETTER GROUPS TO BE CENTERED ON HOLES.

REF: MS3957 (4)

REQ'D.	ITEM	PART NUMBER	DESCRIPTION	SYMBOL
T. AALTONEN LIST OF MATERIAL				
MATERIAL		THE TECHNICAL MATERIEL CORP. MAMARONECK, NEW YORK		
FINISH		TITLE MARKING, PANEL, FRONT MARKING PROCESS: ENGRAVING		
UNLESS OTHERWISE SPECIFIED DIMENSIONS ARE IN INCHES AND INCLUDE CHEMICALLY APPLIED OR PLATED FINISHES		DRAWN G.D.L.	DATE 2-4-64	FINAL APPROVAL G.D.L.
DECIMALS .X ± .05 .XX ± .01 .XXX ± .005		CHECKED G.D.L.	DATE	DATE
TOLERANCES		ELECT. DES. G.D.L.	DATE	DATE
FRACTIONS ± 1/64 ANGLES ± 0° 30'		MECH. DES.	DATE	DATE
SHEET 1 OF 2				REV. LTR. Ø

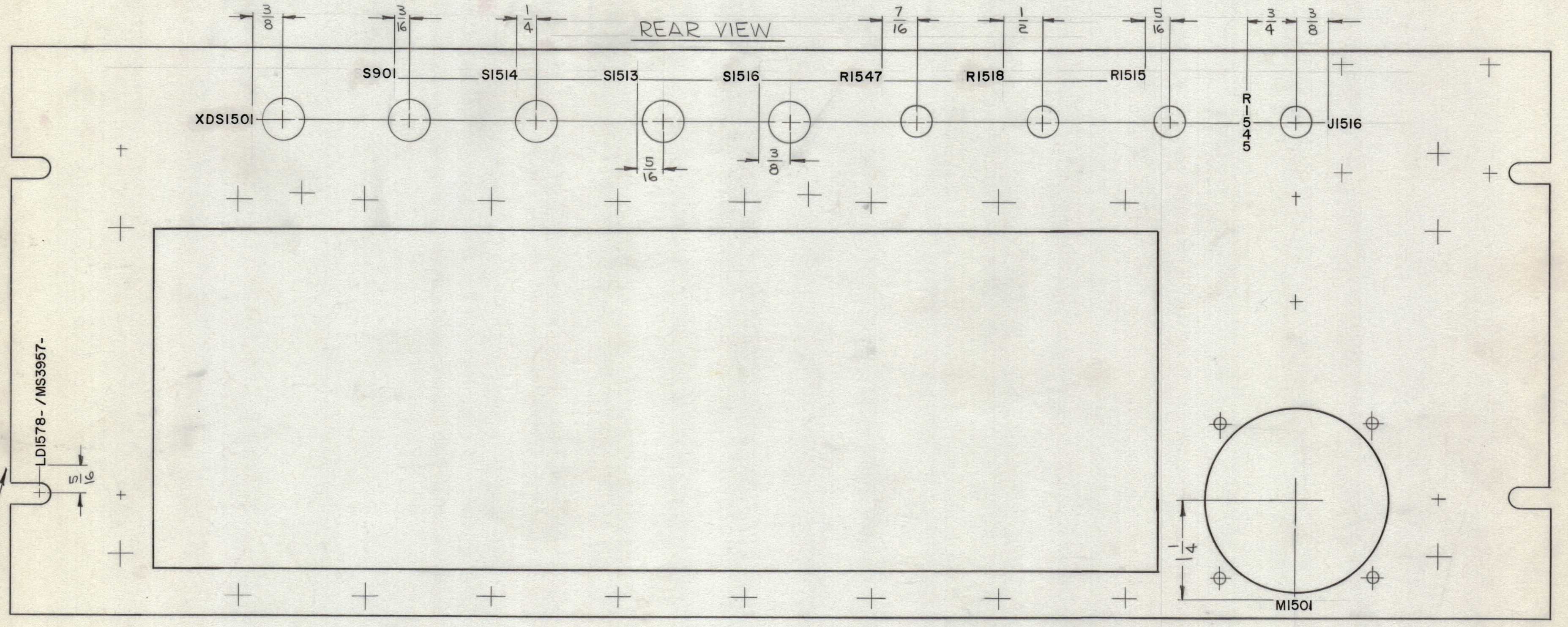
QTY./UNIT	MODEL USED ON	ASSY. NO.
1	SMR-1	
SCALE 1:1	CODE A	
THE CONTENTS OF THIS DRAWING ARE THE EXCLUSIVE PROPERTY OF THE TECHNICAL MATERIEL CORP. ITS UNAUTHORIZED USE OR REPRODUCTION IN WHOLE OR IN PART IS STRICTLY FORBIDDEN.		

NOTES

LD1578 Ø



REVISIONS							
ZONE	SYM	DESCRIPTION	DATE	E.M.N. NO.	DRAFT	CHKD	APPD
-#	X	EXPER. RELEASE	8-2-64	X			
#	Ø	ORIGINAL RELEASE FOR PRODUCTION	8-27-64	#	C.D.L.		



MARK TMC PART NO. WITH LATEST REVISION LETTERS.

TOP

UNLESS OTHERWISE SPECIFIED:  
 MARKING PROCESS: AS PER TMC SPECIFICATION S-727.  
 LETTERING: 1/8 HIGH BLACK GOTHIC, LOCATED AS SHOWN.

REF: MS3957 (4)

1	SMR-1	
QTY./UNIT	MODEL USED ON	ASS'Y. NO.
SCALE 1:1	CODE A	

THE CONTENTS OF THIS DRAWING ARE THE EXCLUSIVE PROPERTY OF THE TECHNICAL MATERIEL CORP. ITS UNAUTHORIZED USE OR REPRODUCTION IN WHOLE OR IN PART IS STRICTLY FORBIDDEN.

REQ'D.	ITEM	PART NUMBER	DESCRIPTION	SYMBOL
T. DALTONEN LIST OF MATERIAL				
MATERIAL		THE TECHNICAL MATERIEL CORP. MAMARONECK, NEW YORK		
FINISH		TITLE MARKING, PANEL, FRONT MARKING PROCESS PER TMC SPEC 5727		
UNLESS OTHERWISE SPECIFIED DIMENSIONS ARE IN INCHES AND INCLUDE CHEMICALLY APPLIED OR PLATED FINISHES		DRAWN G. LACON	DATE 8-7-64	FINAL APPROVAL RDL
DECIMALS X ± .05 .XX ± .01 .XXX ± .005		CHECKED B.F. Q	DATE	DATE
FRACTIONS ± 1/64 ANGLES ± 0° 30'		ELECT. DES. RDL	DATE	DATE
TOLERANCES		MECH. DES.	DATE	DATE
SHEET 2 OF 2				REV. LTR. Ø

NOTES