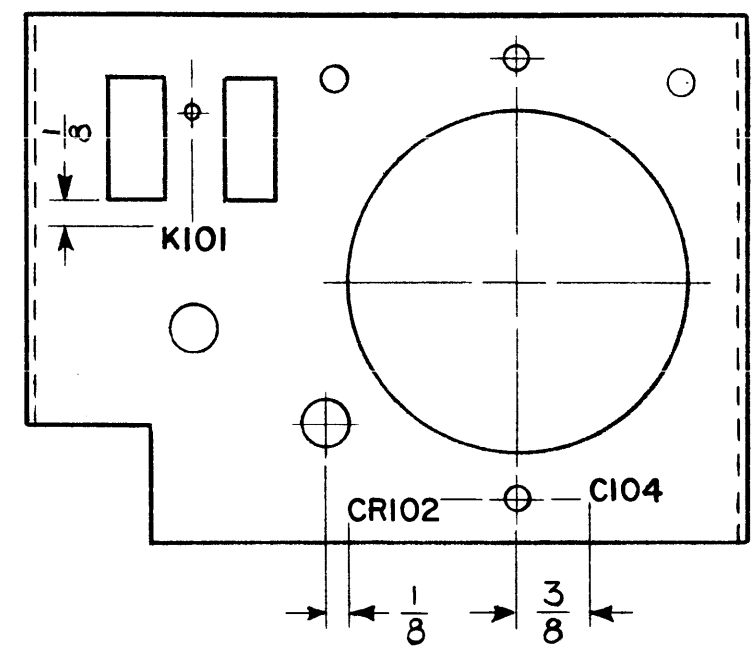


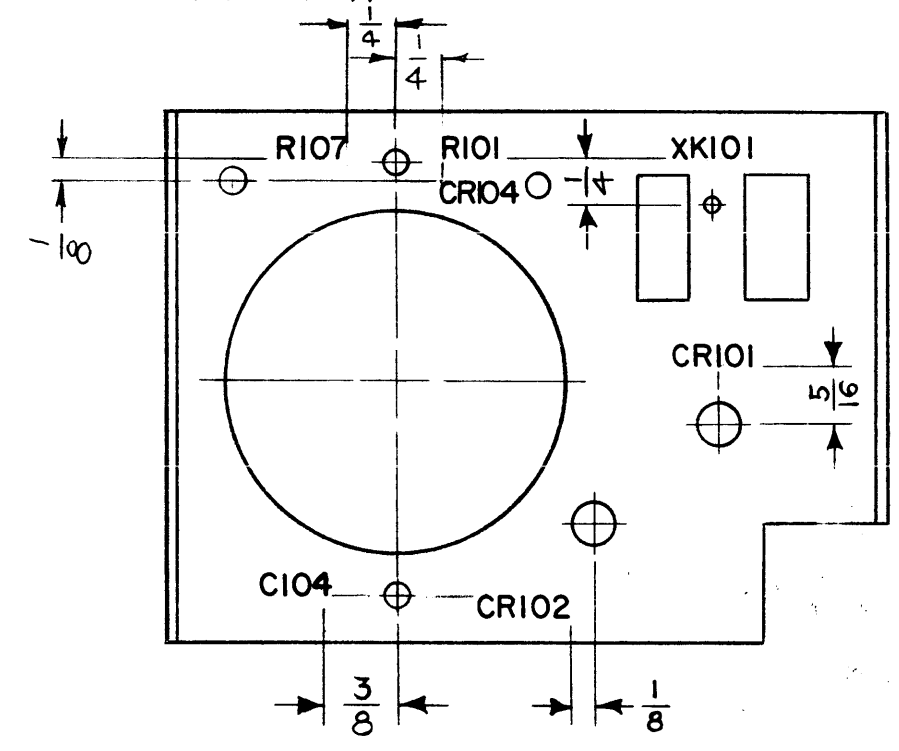
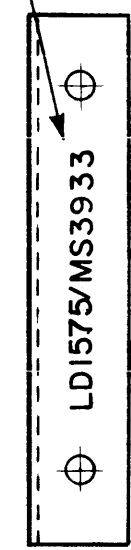
LD1575 B

REVISIONS

SYM	DESCRIPTION	DATE	E.M.N. NO.	DRAFT	CHKD	APPD
X	EXPERIMENTAL RELEASE	8-5-64		NP		
Ø	ORIGINAL RELEASE FOR PRODUCTION	8-31-64	Ø	JK		
A	C104 WAS C101 (2 PLACES)	10-26-64	11774	WB	JK	ADP
B	R107 & CR104 ADDED	3-22-65	13609	JK	JK	



MARK TMC PART NO. WITH LATEST REVISION LETTER



MARKING PROCESS: AS PER TMC SPECIFICATION S-727.
 LETTERING: 1/8 HIGH BLACK GOTHIC, LOCATED AS SHOWN.

REF: MS3933

REQ'D.	ITEM	PART NUMBER	DESCRIPTION	SYMBOL
M. GELLMAN LIST OF MATERIAL				
MATERIAL		THE TECHNICAL MATERIEL CORP. MAMARONECK, NEW YORK		
FINISH		TITLE MARKING, PANEL, RELAY		
UNLESS OTHERWISE SPECIFIED DIMENSIONS ARE IN INCHES AND INCLUDE CHEMICALLY APPLIED OR PLATED FINISHES		DRAWN: <i>M. Peter</i> CHECKED: <i>ADP @</i> ELECT. DES.: <i>[Signature]</i> MECH. DES.:	DATE: 8-5-64 DATE: 9-1-64 DATE:	FINAL APPROVAL: <i>[Signature]</i> DATE:
DECIMALS .X ± .05 .XX ± .01 .XXX ± .005		FRACTIONS ± 1/64 ANGLES ± 0° 30'		TOLERANCES
Q'TY./UNIT 1		MODEL USED ON LFCA-1		ASS'Y. NO.
SCALE 1:1		CODE A		THE CONTENTS OF THIS DRAWING ARE THE EXCLUSIVE PROPERTY OF THE TECHNICAL MATERIEL CORP. ITS UNAUTHORIZED USE OR REPRODUCTION IN WHOLE OR IN PART IS STRICTLY FORBIDDEN.
NOTES		SHEET		REV. LTR.

LD1575 B