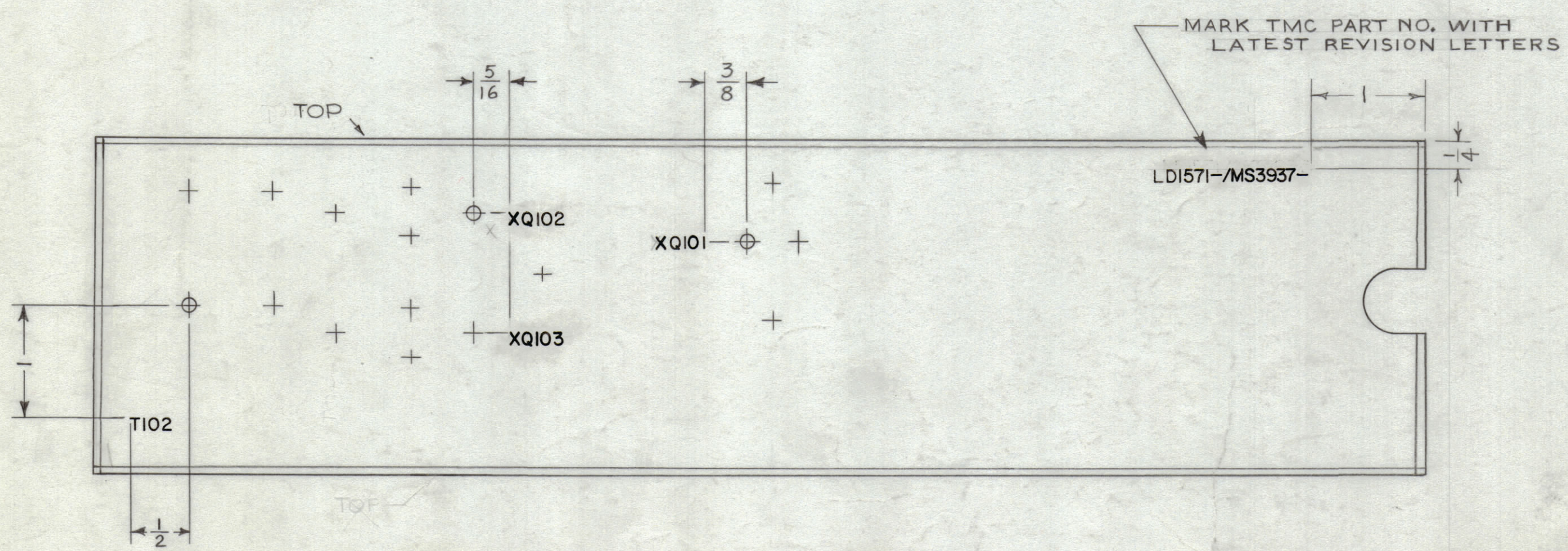
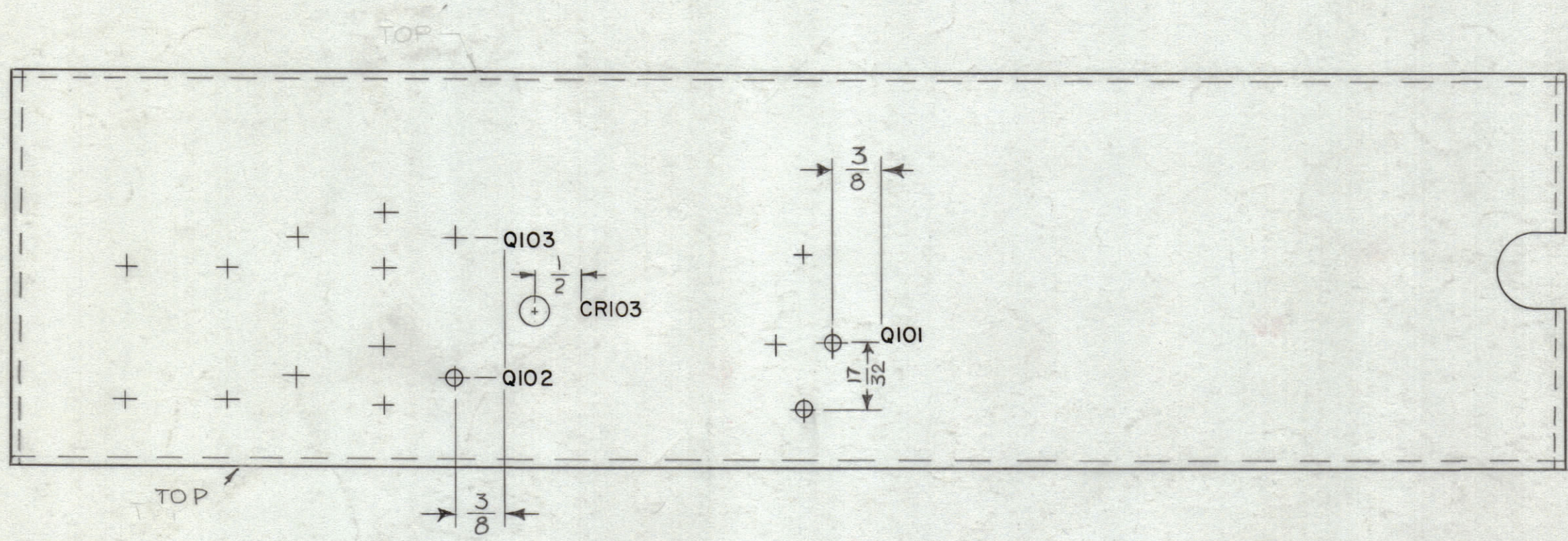


| REVISIONS |     |                                      |         |            |       |                    |
|-----------|-----|--------------------------------------|---------|------------|-------|--------------------|
| ZONE      | SYM | DESCRIPTION                          | DATE    | E.M.N. NO. | DRAFT | CHKD APPD          |
| X         |     | EXPERIMENTAL RELEASE                 | 8-5-64  |            | NP    |                    |
| Ø         |     | ORIGINAL RELEASE FOR PRODUCTION      | 8-31-64 | Ø          | HL    |                    |
| A         |     | PICT: CRI03 ADD; SEE MS3937 REV.'N'. | 2-1-65  | 13392      | HL    | <i>[Signature]</i> |



MARKING PROCESS: AS PER TMC SPECIFICATION S-727.  
 LETTERING: 1/8 HIGH BLACK GOTHIC, LOCATED AS SHOWN.

REF: MS 39 37

|   |               |            |
|---|---------------|------------|
| 1   | LFCA-1        |            |
| Q'TY./UNIT  | MODEL USED ON | ASS'Y. NO. |
| SCALE 1:1   | CODE A        |            |
| THE CONTENTS OF THIS DRAWING ARE THE EXCLUSIVE PROPERTY OF THE TECHNICAL MATERIEL CORP. ITS UNAUTHORIZED USE OR REPRODUCTION IN WHOLE OR IN PART IS STRICTLY FORBIDDEN. |               |            |

| REQ'D.  | ITEM                        | PART NUMBER                               | DESCRIPTION  | SYMBOL         |
|---|-----------------------------|---|--|----------------|
|   | M. GELLMAN                  |   | LIST OF MATERIAL   |                |
| MATERIAL  | —                           |   | THE TECHNICAL MATERIEL CORP.<br>MAMARONECK, NEW YORK           |                |
| FINISH  | —                           |   | TITLE<br>MARKING, CHANNEL, RIGHT SIDE<br>MARKING PER TMC S-727 |                |
| UNLESS OTHERWISE SPECIFIED DIMENSIONS ARE IN INCHES AND INCLUDE CHEMICALLY APPLIED OR PLATED FINISHES | DRAWN<br><i>[Signature]</i> | DATE<br>8-5-64                            | FINAL APPROVAL<br><i>[Signature]</i>                           | DATE           |
| DECIMALS<br>.X ± .05<br>.XX ± .01<br>.XXX ± .005  | TOLERANCES                  | FRACTIONS<br>± 1/64<br>ANGLES<br>± 0° 30' | ELECT. DES.<br><i>[Signature]</i>                              | DATE<br>4-1-64 |
|   |                             |   | MECH. DES.<br><i>[Signature]</i>                               | DATE           |
|   |                             |   | DATE   |                |
|   |                             |   | SHEET  |                |

NOTES

LD1571  
A