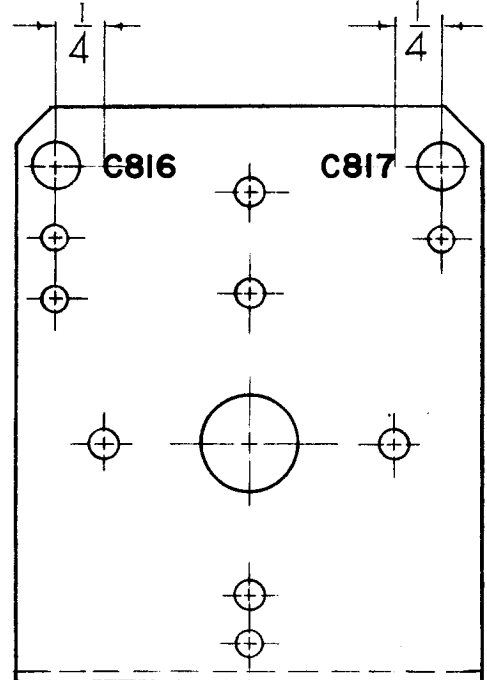
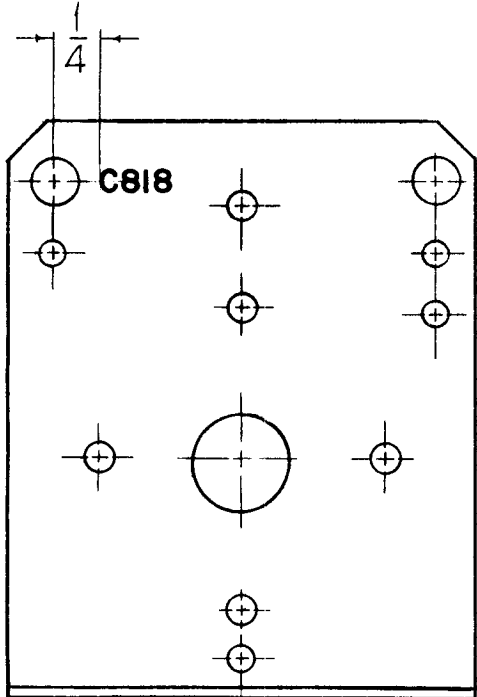
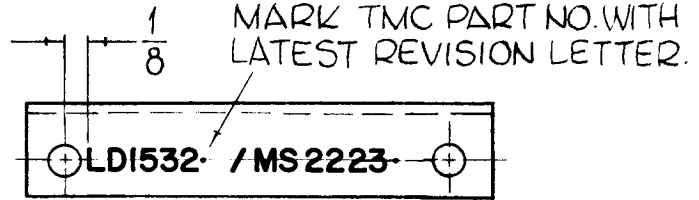


REQ. PER UNIT	USED ON		
	MODEL	ASS'Y. NO.	DATE
1	CLL-1		

LD1532 0



MARKING PROCESS: AS PER TMC SPECIFICATION S-727.
LETTERING: 1/8 HIGH BLACK GOTHIC, LOCATED AS SHOWN.



							REQ. ITEM	PART NO.	POSE	DESCRIPTION	SYMBOL	
0	ORIGINAL RELEASE FOR PRODUCTION	522 64	→	WB	@		//		THE TECHNICAL MATERIEL CORP. MAMARONECK, NEW YORK			
X	EXPERIMENTAL RELEASE FOR PRODUCTION						//		MARKING, BRKT, MTG. SWITCH & CAPACITORS			
SYM	DESCRIPTION	DATE	CH. NO.	DRAFTS	CHECKER	ENG. APP.	MATERIAL		MARKING METHOD: AS PER TMC SPEC S727			
UNLESS OTHERWISE SPECIFIED DIMENSIONS ARE IN INCHES AND INCLUDE CHEMICALLY APPLIED OR PLATED FINISHES		SCALE		//			//		John C. Biele @ 5-22-64			
DECIMALS: .X ± .05 .XX ± .01 .XXX ± .005		FRACTIONS ± 1/64 ANGLES ± 0° 30'		TOLERANCES		CODE A	//		DRAWN		CHECKED	FINAL APPROVAL
							FINISH & SPEC. NO.		ELEC. DES. APP.		MECH. DES. APP.	LD1532 0